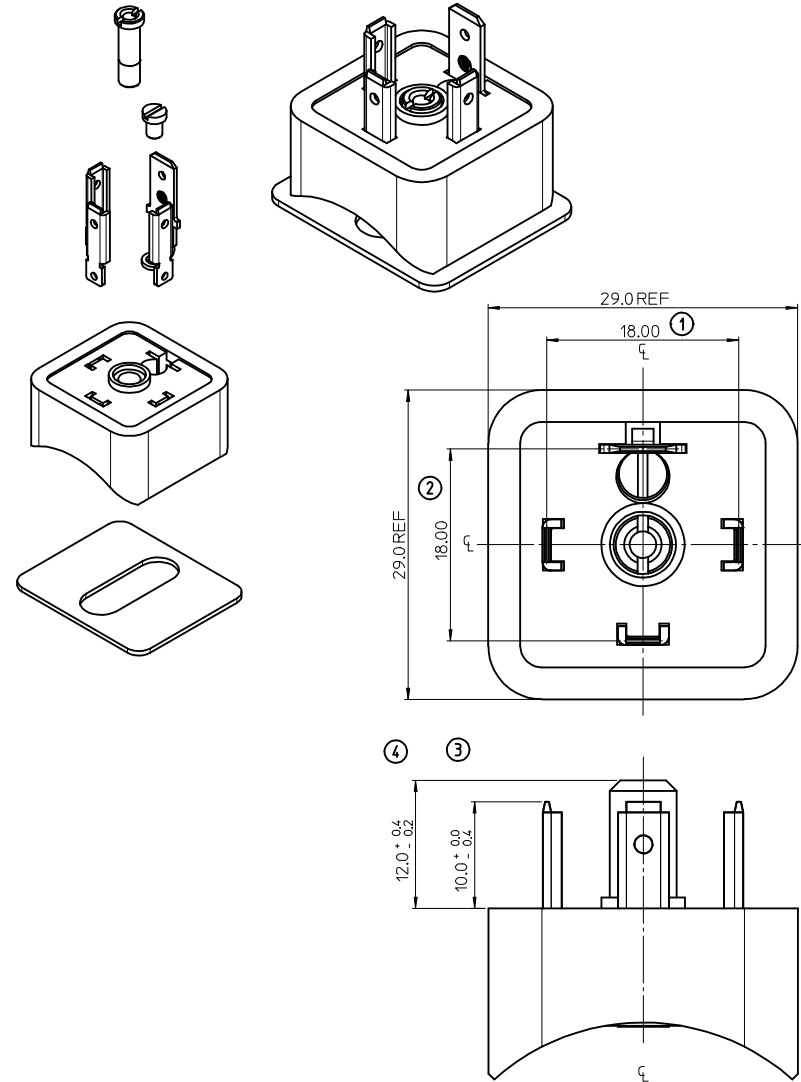


B233045N2**

SERIES _____
 B23= FORM A
 POLES _____
 2= 2 POLE & 3= 3 POLE
 CURVED BASE DIAMETER _____
 040= Ø40, 045= Ø45, 050= Ø50, 060= Ø60, 080= Ø80, 100= Ø100, 160= Ø160,
 MATERIAL AND HOUSING COLOUR _____
 N= PA6 BLACK, W= PA6 BLACK V0
 SCREW AND GASKET _____
 2= NBR FLAT GASKET & SCREWS
 4= SILICON FLAT GASKET & SCREWS
 NON STANDARD COMPONENTS _____

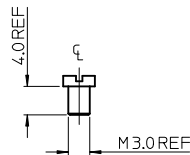
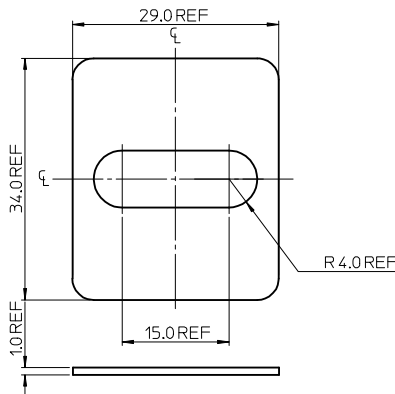
| ITEM | DESCRIPTION |
|------|-------------|
| 1 | INSERT |
| 2 | EARTH SCREW |
| 3 | TERMINALS |
| 4 | HOUSING |
| 5 | GASKET |



NOTES
 1. PLEASE SEE TABLE FOR CURRENTLY CONFIGURED PART NUMBERS.
 FOR SPECIFIC PART NUMBERS PLEASE CONTACT SALES OR CONSULT
 THE INTELLIGENT PART NUMBERS IN THE TABLE ATTACHED.
 3. FOR PACKAGING SEE PACKAGING SPEC PK-121013-B23
 4. PRODUCT SPEC: SEE PS-121201-001
 4. TERMINALS BENT AFTER INSERTION FOR BEND ANGLE SEE TABLE

LAST INSPECTION NUMBER 4

| PART No. | mPm PART No. | DESCRIPTION | TERMINAL BEND ANGLE (°) |
|------------|--------------|---------------------------------------------------|-------------------------|
| 1210120058 | B233045N2 | TYPE A 3P BLACK, Ø45 NBR FLAT GASKET & SCREWS | 45 |
| 1210120060 | B233050N2 | TYPE A 3P BLACK, Ø50 NBR FLAT GASKET & SCREWS | 45 |
| 1210120052 | B232060N2 | TYPE A 2P BLACK, Ø60 NBR FLAT GASKET & SCREWS | 45 |
| 1210120050 | B232045N2 | TYPE A 2P BLACK, Ø45 NBR FLAT GASKET & SCREWS | 45 |
| 1210120063 | B233080N2 | TYPE A 3P BLACK, Ø80 NBR FLAT GASKET & SCREWS | 45 |
| 1210120062 | B233060N4 | TYPE A 3P BLACK, Ø60 SILICON FLAT GASKET & SCREWS | 45 |
| 1210120061 | B233060N2 | TYPE A 3P BLACK, Ø60 NBR FLAT GASKET & SCREWS | 45 |
| 1210120059 | B233045N4 | TYPE A 3P BLACK, Ø45 SILICON FLAT GASKET & SCREWS | 45 |
| 1210120057 | B233040N2 | TYPE A 3P BLACK, Ø40 NBR FLAT GASKET & SCREWS | 45 |
| 1210120055 | B232100N2 | TYPE A 2P BLACK, Ø100 NBR FLAT GASKET & SCREWS | 45 |
| 1210120054 | B232080N2 | TYPE A 2P BLACK, Ø80 NBR FLAT GASKET & SCREWS | 45 |
| 1210120051 | B232050N2 | TYPE A 2P BLACK, Ø50 NBR FLAT GASKET & SCREWS | 45 |
| 1210120049 | B232040N2 | TYPE A 2P BLACK, Ø40 NBR FLAT GASKET & SCREWS | 45 |
| 1210130232 | B233100N2 | TYPE A 3P BLACK, Ø100 NBR FLAT GASKET & SCREWS | 45 |



| | | | | | | | | | |
|-----------------------------------------------------------------------------------------------------------------------------------|-------------------------------|---------------------------------------------------------------------------------------------------------------|------------------------------------------------------|-----------------------------------------------------------------------|----------------------------------------------------------------|---------------------------------|-------------------------------|------------------------|----------------------------|
| ORIGINAL RELEASE EC NO: IPG2014-0532 DRW:KORNOYLE 2013/09/25 CHK:D:OSHEA 2013-10-23 APPR:ST:GRiffin 2013/11/11 | QUALITY SYMBOLS ▽=0 ▽=0 | GENERAL TOLERANCES (UNLESS SPECIFIED) | | DIMENSION STYLE MM ONLY | | SCALE 2:1 | DESIGN UNITS METRIC | THIRD ANGLE PROJECTION | |
| | | 4 PLACES ± --- + --- 3 PLACES ± --- + --- 2 PLACES ± 0.1 + --- 1 PLACE ± 0.2 + --- ANGULAR ± ---° | mm INCH ± --- ± --- ± 0.1 ± --- ± 0.2 ± --- | DRAWN BY JOCONNOR CHECKED BY DMAHER APPROVED BY EFOLAN | DATE 2011/06/22 DATE 2011/06/22 DATE 2011/07/12 | TITLE B23 SERIES BASE | | | |
| DRAFT WHERE APPLICABLE MUST REMAIN WITHIN DIMENSIONS | | SEE CHART | | MATERIAL NO. SD-121012-005 | | | DOCUMENT NO. | | SHEET NO. 1 OF 1 |
| THIS DRAWING CONTAINS INFORMATION THAT IS PROPRIETARY TO MOLEX INCORPORATED AND SHOULD NOT BE USED WITHOUT WRITTEN PERMISSION | | | | | | | | | |

