

REVISIONS BP

DO NOT SCALE FROM THIS PRINT

NOTES:

1. MAX ALLOWABLE BOW: .005 INCH/INCH.
2. MIN TERMINAL PUSHOUT FORCE: 2 lbs.
3. MAX PIN ROTATION IN BODY: 2°.
4. MAX CUT FLASH: .010
5. TUBE POSITIONS 8-50 ONLY. POSITIONS 1-7 TO BE BULK PACKAGED.
6. NOTE DELETED.

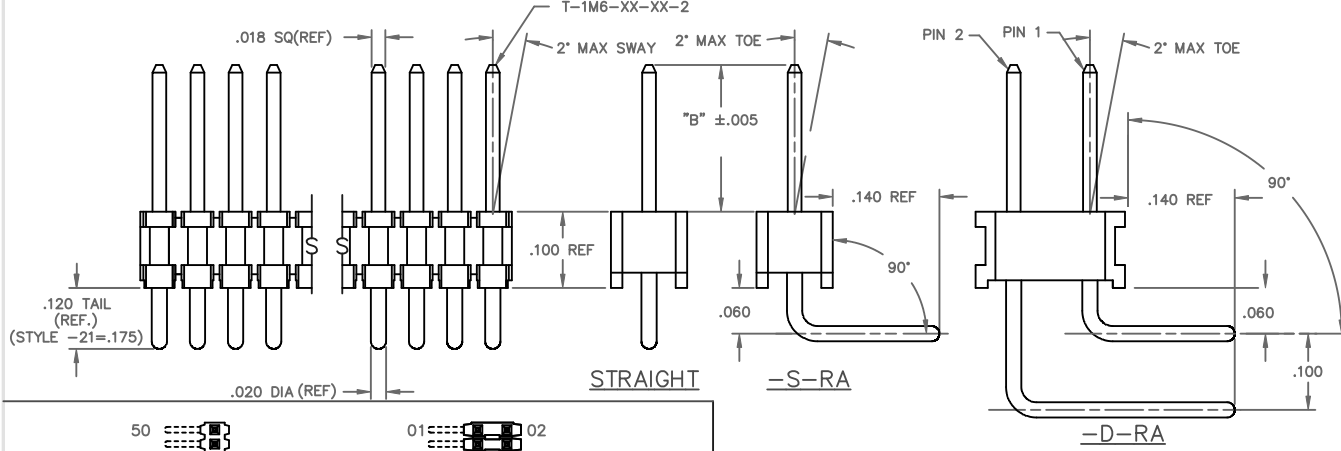
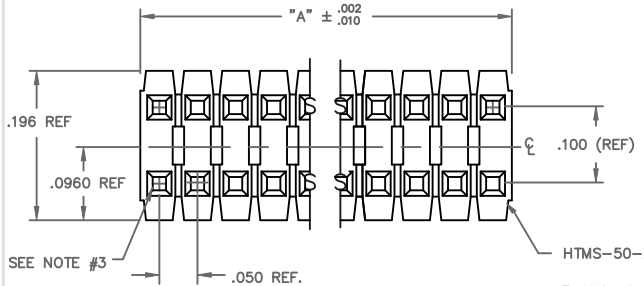
DIMENSIONS ARE IN INCHES		UNLESS OTHERWISE NOTED		TOLERANCES ARE:		TITLE:	DWG NO:
ONE PLACE DECIMALS ± .1	THREE PLACE DECIMALS ± .005	ANGLES ± 2°		TERMINAL MICRO STRIP		TMS-1XX-XX-XX-X-XX-XXX	
TWO PLACE DECIMALS ± .01	FOUR PLACE DECIMALS ± .0020						SHEET 1 OF 1

TMS-1XX-XX-XX-X-XX-XXX

OPTION  
-POLARIZING SPECIFICATION  
XXX INDICATES POS. TO BE OMITTED  
(SEE FIG. 1)  
OPTION  
-RA: RIGHT ANGLE (SEE TABLE 1)  
(SINGLE & DOUBLE RA AVAILABLE  
IN STYLE -01, -02, & -03 ONLY)

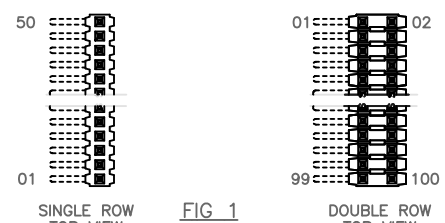
BODY SPECIFICATION  
-S: SINGLE (USE HTMS-50-S)  
-D: DOUBLE (USE HTMS-50-D)

- PLATING SPECIFICATION
- G: 10μ" GOLD IN CONTACT AREA, 10μ" GOLD ON TAIL
  - T: MATTE TIN CONTACT AND TAIL
  - ONLY AVAILABLE ON LEAD STYLES -01, -02, -51 AND -52.
  - S: 30μ" SELECTIVE GOLD IN CONTACT AREA, MATTE TIN ON TAIL
  - F: 3μ" FLASH GOLD IN CONTACT AREA, MATTE TIN ON TAIL
  - H: 30μ" HEAVY GOLD IN CONTACT AREA, 3μ" GOLD ON TAIL
  - FM: 3μ" SELECTIVE FLASH GOLD IN CONTACT AREA, MATTE TIN ON TAIL
  - SM: 30μ" SELECTIVE GOLD IN CONTACT AREA, MATTE TIN ON TAIL
  - TM: MATTE TIN CONTACT AND TAIL
  - ONLY AVAILABLE ON LEAD STYLES -01, -02, -51 AND -52.
  - L: 10μ" LIGHT SELECTIVE GOLD IN CONTACT AREA, MATTE TIN ON TAIL



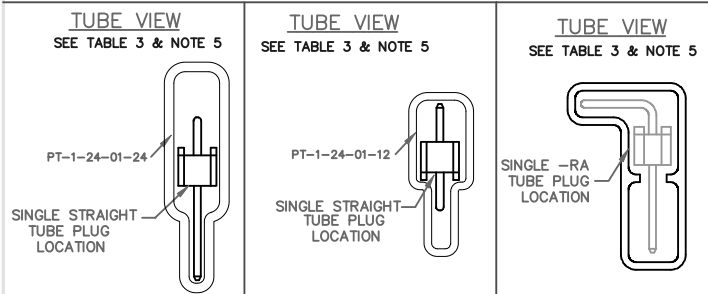
LENGTH	"L"	CONTACT AREA
-01	.440	.140
-02	.410	.140
-03	.610	.190
-04	.505	.190
-05	.705	.190
-12	.425	.165
-13	.625	.190
-14	.555	.190
-15	.755	.190
-16	.825	.190
-17	.320	.060
-18	.450	.190
-19	.650	.190
-21	.505	.190
-25	.330	.060
-26	.373	.075
-27	.398	.100
-28	1.050	.190

\* REF FOR PIN LENGTH



BODY STYLE	LEAD STYLE	TUBE	PLUG		
TMS-DOUBLE STRAIGHT STYLES	-01,-21, -51,-52	PT-1-24-01-22	TP-03		
	-02	PT-1-24-01-95	TP-03		
	-53	PT-1-24-02-66	TP-03		
	-55,-56	PT-1-24-01-29	TP-03		
	-54	PT-1-24-02-46	TP-03		
	-57	PT-1-24-02-25	TP-03		
	-58,-59	PT-1-24-16-29	TP-07		
	-60	PT-1-24-18-29	TP-07		
	TMS-SINGLE STRAIGHT STYLES	-01	PT-1-24-01-24	TP-24	
		-21	PT-1-24-02-29	TP-24	
-58,-59,-60		PT-1-24-10-03	TP-33		
-02		PT-1-24-01-12	TP-12		
-51,-52		PT-1-24-01-66	TP-24		
-53,-54, -55,-56		PT-1-24-02-03	TP-24		
-57		PT-1-24-10-03	TP-33		
TMS-DOUBLE RIGHT ANGLE		-01,-02,-03	PT-1-24-02-66	TP-03	
		TMS-SINGLE RIGHT ANGLE	-01,-02,-03	PT-1-24-01-66	TP-24

STRAIGHT OPTION		RIGHT ANGLE OPTION			ALL
LEAD STYLE	TERMINAL SPEC.	LEAD STYLE	PIN #1	PIN #2	"B"
-01	T-1M6-18-XX-2	-01	T-1M6-14-XX-2	T-1M6-15-XX-2	.230
-02	T-1M6-17-XX-2	-02	T-1M6-12-XX-2	T-1M6-13-XX-2	.100
-03	N/A	-03	T-1M6-18-XX-2	T-1M6-19-XX-2	.125
-21	T-1M6-21-XX-2	-21	N/A	N/A	.230
-51	T-1M6-02-XX-2	-51	N/A	N/A	.190
-52	T-1M6-12-XX-2	-52	N/A	N/A	.205
-53	T-1M6-04-XX-2	-53	N/A	N/A	.285
-54	T-1M6-14-XX-2	-54	N/A	N/A	.335
-55	T-1M6-03-XX-2	-55	N/A	N/A	.390
-56	T-1M6-13-XX-2	-56	N/A	N/A	.405
-57	T-1M6-19-XX-2	-57	N/A	N/A	.430
-58	T-1M6-05-XX-2	-58	N/A	N/A	.485
-59	T-1M6-15-XX-2	-59	N/A	N/A	.535
-60	T-1M6-16-XX-2	-60	N/A	N/A	.605



PROPRIETARY NOTE  
THIS DOCUMENT CONTAINS CONFIDENTIAL AND PROPRIETARY INFORMATION AND IS NOT TO BE DISCLOSED TO ANY OTHER PARTY WITHOUT THE WRITTEN PERMISSION OF SAMTEC CORPORATION. ANY UNAUTHORIZED DISCLOSURE OR REPRODUCTION, REVERSE ENGINEERING OR ANY OTHER VIOLATION OF ANY APPLICABLE LAWS IS STRICTLY PROHIBITED. SAMTEC CORPORATION SHALL NOT BE HELD RESPONSIBLE FOR ANY DAMAGES, INCLUDING CONSEQUENTIAL DAMAGES, ARISING OUT OF OR FROM THE USE OF THIS DOCUMENT OR ANY INFORMATION CONTAINED HEREIN.

MATERIAL:  
INSULATOR:  
LCP UL94 V-0  
COLOR: BLACK  
TERMINAL:  
PHOSPHOR BRONZE

EXSPROD/ASSEMBLY/050  
TMS-ASM  
**samtec**  
520 PARK EAST BLVD. NEW ALBANY, INDIANA 47151-1147  
PHONE (812) 944-6733 P.O. BOX 1147  
CODE 55322

MADE BY: PURVIS 8-13-87  
CHECKED BY: WILLIAMS 10-21-87  
ENGL. APPROVAL  
TMS-1XX-XX-XX-X-XX-XXX  
SHEET 1 OF 1