

4

3

2

1

THIS DRAWING IS UNPUBLISHED.

RELEASED FOR PUBLICATION

© COPYRIGHT

ALL RIGHTS RESERVED.

LOC DIST

REVISIONS

| P | LTR | DESCRIPTION   | DATE      | DWN | APVD |
|---|-----|---------------|-----------|-----|------|
|   | D1  | ECR-12-019998 | 19NOV2012 | XZ  | SX   |
|   |     |               |           |     |      |
|   |     |               |           |     |      |

# REPLACED BY OCEAN STYLE APPLICATOR PART NUMBER 2151148-1

FOR REPLACEMENT PARTS FOR APPLICATOR 1528386  
REFER TO ADDITIONAL PAGE(S). SPARE PARTS KIT (IF LISTED)  
WILL REMAIN AVAILABLE.

THE REPLACEMENT OCEAN STYLE APPLICATOR HAS THE  
SAME TERMINATOR/PRESS INTERFACE AS APPLICATOR  
1528386

Dimensioning and tolerancing per ASME Y14.5M-2009


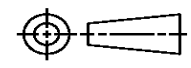
B

A

Dimensioning and tolerancing per ASME Y14.5M-2009

B

A

|   |  |                  |   |           |            |               |  |
|---|--|------------------|---|-----------|------------|---------------|--|
| THIS DRAWING IS A CONTROLLED DOCUMENT.  |  | DWN X. ZHAO      |  TE Connectivity |           |            |               |  |
| DIMENSIONS:   |  | CHK S. XI        |   |           |            |               |  |
| TOLERANCES UNLESS OTHERWISE SPECIFIED:  |  | APVD S. XI       | NAME  |           |            |               |  |
|  <p>0 PLC ±<br/>1 PLC ±<br/>2 PLC ±<br/>3 PLC ±<br/>4 PLC ±<br/>ANGLES ±</p> |  | PRODUCT SPEC     | FINE ADJ SIDE FD HD-I APPL  |           |            |               |  |
|   |  | APPLICATION SPEC | SIZE  | CAGE CODE | DRAWING NO | RESTRICTED TO |  |
|   |  | MATERIAL         | WEIGHT  | A3        |            | ©- 1528386    |  |
|   |  | FINISH           |   |           |            |               |  |
|   |  | SCALE            | SHEET 1 OF 2  | REV D1    |            |               |  |

Dimensioning and tolerancing per ASME Y14.5M-2009

| PART NUMBER  | REV | FIRST USED | TERMINATOR | FEED TYPE      | DESCRIPTION        |
|--------------|-----|------------|------------|----------------|--------------------|
| 1528386 -1   | D   | -          | LEADMAKER  | MECH POST FEED | CUTS CARRIER       |
| 1528386 -2   | D   | -          | BENCH      | MECH PRE FEED  | CUTS CARRIER       |
| 1528386 -6   | D   | -          | LEADMAKER  | MECH POST FEED | CONTINUOUS CARRIER |
| 7-1528386 -1 | D   | -          | LEADMAKER  | MECH POST FEED | -1 AND SPARE PARTS |
| 7-1528386 -2 | D   | -          | BENCH      | MECH PRE FEED  | -2 AND SPARE PARTS |
| 7-1528386 -6 | D   | -          | LEADMAKER  | MECH POST FEED | -6 AND SPARE PARTS |
| 7-1528386 -7 | A   | -          | -          | -              | SPARE PARTS KIT    |

**CRIMP DATA AMP TERMINAL AMP CRIMP SPECS**

| CRIMP                    | SIZE           | TYPE                | RANGE                                   |
|--------------------------|----------------|---------------------|---|
| WIRE                     | 4.06 [.160 IN] | F                   | 4.0mm <sup>2</sup> - 6.0mm <sup>2</sup> |
| INSUL                    | 5.33 [.210 IN] | F                   | 4.00-5.20 [.157-.205 IN]                |
| WIRE STRIP LENGTH        |                | APPL INSTRUCTION    |   |
| 5.20-5.80 [.205-.228 IN] |                | 408-8322 & 408-8490 |   |

| TERMINAL            | FEED            |
|---------------------|-----------------|
| APPL SPEC 114-18037 | 19.00 [.748 IN] |

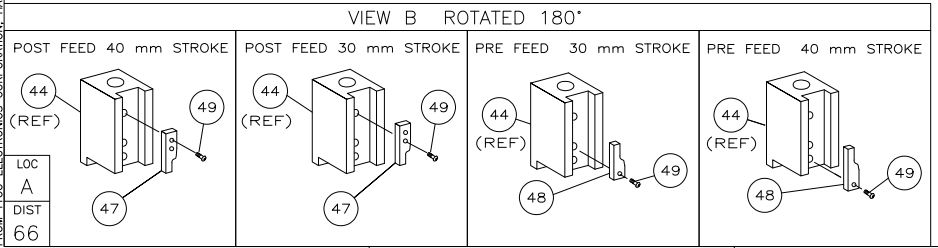
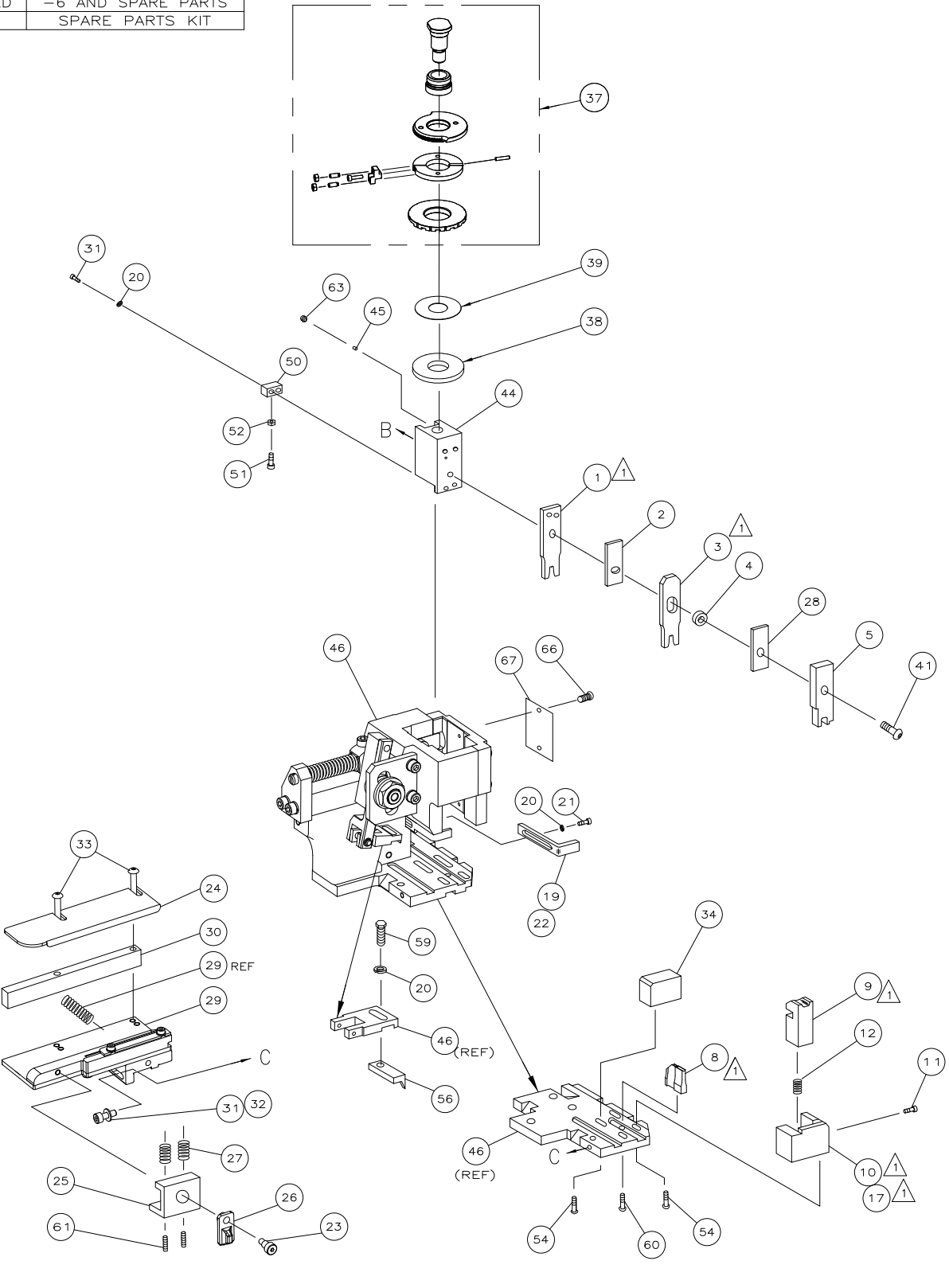
**TERMINALS APPLIED**

| TERMINAL | CRIMP | SIZE | TYPE | RANGE |
|----------|-------|------|------|-------|
| 963709   | -     | -    | -    | -     |
| 1241818  | -     | -    | -    | -     |

| WIRE SIZE                                   | CRIMP HEIGHT               | REF SETTING |
|---|----------------------------|-------------|
| 6.0mm <sup>2</sup>                          | 2.55 ±0.05 [.100 ±.002 IN] | B 0         |
| 5.0mm <sup>2</sup> OR (2)2.5mm <sup>2</sup> | 2.36 ±0.05 [.093 ±.002 IN] | C 4         |
| 4.0mm <sup>2</sup>                          | 2.17 ±0.05 [.085 ±.002 IN] | D 8         |

| SET UP GAGE | LAYOUT   |
|-------------|----------|
| 458637-3    | L1426221 |

- ▲ RECOMMENDED SPARE PARTS.
- 2. GREASE RAM, CAM, CAM FOLLOWER AND FEED ROD LIGHTLY.
- 3. LUBRICATE DAILY PER THE APPLICATOR INSTRUCTION SHEET SUPPLIED WITH THE APPLICATOR.



**\* WARNING:**  
ON INSTALLATION, SET WIRE DISC TO LARGEST WIRE SIZE SETTING. USE OF SETTINGS BELOW MIN REQUIRED CRIMP HEIGHT SETTING WILL CAUSE DAMAGE TO CRIMP TOOLING.

| QTY | REQD | PER | ASSY | PARTS LIST  | ITEM NO |
|-----|------|-----|------|-------------|---------|
| 1   | 1    | 1   | 1    | 1528386     | 73      |
| 1   | 1    | 1   | 1    | 1338705-3   | 72      |
| 1   | 1    | 1   | 1    |             | 71      |
| 1   | 1    | 1   | 1    |             | 70      |
| 1   | 1    | 1   | 1    |             | 69      |
| 1   | 1    | 1   | 1    |             | 68      |
| 1   | 1    | 1   | 1    | 461264-5    | 67      |
| 2   | 2    | 2   | 2    | 21017-2     | 66      |
| 1   | 1    | 1   | 1    |             | 65      |
| 1   | 1    | 1   | 1    | 3-18031-0   | 64      |
| 1   | 1    | 1   | 1    |             | 63      |
| 2   | 2    | 2   | 2    | 2-18032-5   | 62      |
| 1   | 1    | 1   | 1    | 18024-7     | 61      |
| 1   | 1    | 1   | 1    | 5-18022-2   | 60      |
| 1   | 1    | 1   | 1    |             | 59      |
| 1   | 1    | 1   | 1    |             | 58      |
| 1   | 1    | 1   | 1    | 1338685-1   | 57      |
| 1   | 1    | 1   | 1    |             | 56      |
| 4   | 4    | 4   | 4    | 18024-8     | 55      |
| 1   | 1    | 1   | 1    |             | 54      |
| 1   | 1    | 1   | 1    | 18030-1     | 53      |
| 1   | 1    | 1   | 1    | 1-811242-0  | 52      |
| 1   | 1    | 1   | 1    | 690753-2    | 51      |
| 1   | 1    | 1   | 1    | 18024-3     | 50      |
| 1   | 1    | 1   | 1    | 1338675-1   | 49      |
| 1   | 1    | 1   | 1    | 1338676-1   | 48      |
| 1   | 1    | 1   | 1    | 1320999-3   | 47      |
| 1   | 1    | 1   | 1    | 690191-1    | 46      |
| 1   | 1    | 1   | 1    | 1333257-1   | 45      |
| 1   | 1    | 1   | 1    |             | 44      |
| 1   | 1    | 1   | 1    |             | 43      |
| 1   | 1    | 1   | 1    |             | 42      |
| 1   | 1    | 1   | 1    | 2-18024-6   | 41      |
| 1   | 1    | 1   | 1    |             | 40      |
| 1   | 1    | 1   | 1    | 690125-1    | 39      |
| 1   | 1    | 1   | 1    | 469367-1    | 38      |
| 1   | 1    | 1   | 1    | 879103-2    | 37      |
| 1   | 1    | 1   | 1    |             | 36      |
| 1   | 1    | 1   | 1    |             | 35      |
| 1   | 1    | 1   | 1    | 2-1320934-3 | 34      |
| 2   | 2    | 2   | 2    | 1-18024-0   | 33      |
| 1   | 1    | 1   | 1    | 18027-2     | 32      |
| 3   | 3    | 3   | 3    | 1-18023-2   | 31      |
| 1   | 1    | 1   | 1    | 1-1320908-0 | 30      |
| 1   | 1    | 1   | 1    | 1633073-2   | 29      |
| 1   | 1    | 1   | 1    | 1-455888-0  | 28      |
| 2   | 2    | 2   | 2    | 1-22284-0   | 27      |
| 1   | 1    | 1   | 1    | 356835-1    | 26      |
| 1   | 1    | 1   | 1    | 240792-1    | 25      |
| 1   | 1    | 1   | 1    | 1320928-1   | 24      |
| 1   | 1    | 1   | 1    | 980371-4    | 23      |
| 1   | 1    | 1   | 1    | 690472-2    | 22      |
| 1   | 1    | 1   | 1    | 1-18023-1   | 21      |
| 4   | 4    | 4   | 4    | 18025-2     | 20      |
| 1   | 1    | 1   | 1    | 690472-1    | 19      |
| 1   | 1    | 1   | 1    | 1338684-2   | 18      |
| 1   | 1    | 1   | 1    |             | 17      |
| 1   | 1    | 1   | 1    |             | 16      |
| 1   | 1    | 1   | 1    |             | 15      |
| 1   | 1    | 1   | 1    |             | 14      |
| 1   | 1    | 1   | 1    |             | 13      |
| 1   | 1    | 1   | 1    | 3-22280-3   | 12      |
| 1   | 1    | 1   | 1    | 356885-5    | 11      |
| 1   | 1    | 1   | 1    | 1-1320921-0 | 10      |
| 1   | 1    | 1   | 1    | 454276-5    | 9       |
| 1   | 2    | 2   | 2    | 1333211-2   | 8       |
| 1   | 1    | 1   | 1    |             | 7       |
| 1   | 1    | 1   | 1    |             | 6       |
| 1   | 1    | 1   | 1    | 2-455889-1  | 5       |
| 1   | 1    | 1   | 1    | 1-238011-0  | 4       |
| 1   | 2    | 2   | 2    | 6-683453-5  | 3       |
| 1   | 1    | 1   | 1    | 455888-9    | 2       |
| 1   | 2    | 2   | 2    | 456414-5    | 1       |

**APPLICATOR INSTRUCTION SHEET**

**DOCUMENTATION PACKAGE**

**PLATE, IDENTIFICATION**

**SCR,DRIVE(#2x.19)ID PLATE**

**SCR,SKT SET(M6X6)RAM**

**SCR,SET(M5X20)DRAG**

**SCR,BHC(M4X10)ANVIL**

**SCR,HEX(M4X8)FEED FINGER**

**PAWL, FEED**

**SCR,BHC(M4X12)SHEAR HOLDER**

**NUT,HEX(M3)HOLD DOWN**

**BUMPER, HOLDDOWN**

**SPACER, TONKER**

**SCR,BHC(M3X10)CAM**

**CAM, PRE FEED 30 & 40 mm ST**

**CAM, POST FEED 30 & 40 mm ST**

**APPLICATOR BASIC SUBASSY**

**PLUG, NYLON**

**RAM**

**SCR,BHC(M8X25)RAM**

**SHIM SUBASSY**

**SPACER, FINE ADJUST**

**FINE ADJUST HEAD SUBASSY**

**SUPPORT, TERMINAL**

**SCR,BHC(M4X20)STRIP GUIDE**

**WASHER, FLAT(M4)**

**SCR,SKT CAP(M4X12)MOUNT BLOCK**

**SPACER, STRIP GUIDE**

**STRIP GUIDE PLATE ASSY**

**SPACER, FRONT SHEAR DEP**

**SPRING, DRAG**

**LEVER, DRAG RELEASE**

**DRAG, TERMINAL**

**PLATE, STRIP GUIDE**

**SCR,SHC SHLD**

**STRIPPER**

**SCR,SHC(M4X10)STRIPPER**

**WASHER,LOCK(M4)STRIPPER**

**STRIPPER**

**HOLDER, SHEAR, FRONT (NO-CUT)**

**SPRING, SHEAR**

**STOP, SHEAR**

**HOLDER, SHEAR, FRONT (CUT)**

**SHEAR, FLOAT (FRONT)**

**ANVIL**

**DEPRESSOR, SHEAR (FRONT)**

**SPACER, BLOCK CRIMPER**

**CRIMPER, INSULATION**

**SPACER, CRIMPER**

**CRIMPER, WIRE**

**FINISH ADJUST SIDE FEED HD-I APPL**

**SCALE: A1**

**DRAWING NO: 1528386**

**SHEET 1 OF 1**

**REV D**

**Tyco Electronics Corporation Harrisburg, PA 17105-3608**