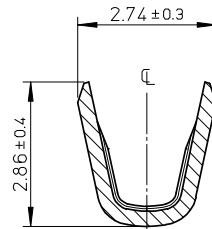
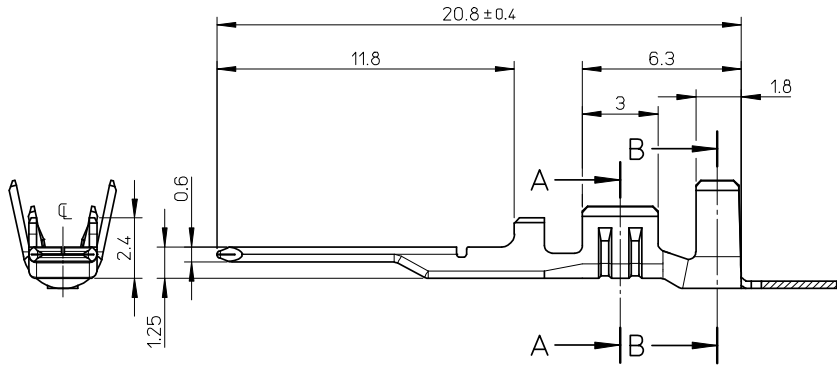
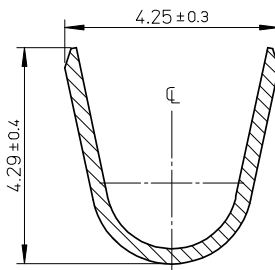


注記:  
NOTES:

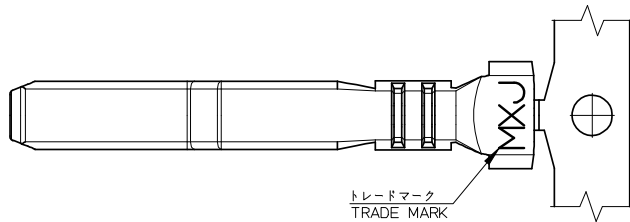
1. 使用材料: 銅合金(板厚=0.3)  
MATERIALS: COPPER ALLOY (THICKNESS=0.3)
2. めっき仕様  
FINISHES  
コンタクト部: ニッケル下地 金めっき  
CONTACT AREA: GOLD OVER NICKEL PLATING  
めっき厚: 金めっき 0.25 マイクロメートル以上  
下地めっき 1.0 マイクロメートル以上  
THICKNESS: GOLD 0.25 MICROMETER MINIMUM  
OVER NICKEL PLATING 1.0 MICROMETER MINIMUM  
圧着部: ニッケル下地 錫めっき  
CRIMP AREA: TIN OVER NICKEL PLATING  
めっき厚: 錫めっき 1.0 マイクロメートル以上  
下地めっき 1.0 マイクロメートル以上  
THICKNESS: TIN 1.0 MICROMETER MINIMUM  
OVER NICKEL PLATING 1.0 MICROMETER MINIMUM
3. 端子圧着の仕様については、圧着仕様書(CS-503196-001)を参照願います。  
PLEASE REFER TO CRIMP SPECIFICATION (CS-503196-001) FOR ROBOT CONN.
4. 製品の仕様については、製品仕様書(PS-58691-001)を参照願います。  
PLEASE REFER TO PRODUCT SPECIFICATION (PS-58691-001) FOR ROBOT CONN.
5. 製品の取扱いについては、コネクタ取り扱い説明書(AS-58696-001)を参照願います。  
PLEASE REFER TO USER'S MANUAL (AS-58696-001) FOR ROBOT CONN.
6. 適合ハウジング: 503193-0600  
APPLICABLE HOUSING: 503193-0600
7. 適用圧着工具: 578056-3000 (自動機/503195-1000に適用)  
578056-5300 (手動工具/503195-1100に適用)  
APPLICABLE CRIMP TOOL: 578056-3000 (AUTOMATIC / APPLY TO 503195-1000)  
578056-5300 (HAND TOOL / APPLY TO 503195-1100)
8. 適用端子引抜き工具: 578056-6000  
APPLICABLE TERMINAL EXTRACTION TOOL: 578056-6000
9. 適用電線範囲: AWG#16~19(0.76~1.39mm<sup>2</sup>)  
APPLICABLE WIRE: AWG#16~19(0.76~1.39mm<sup>2</sup>)
10. 絶縁被覆外径: φ2.0~φ2.51mm  
INSULATION EXTERNAL DIA: φ2.0~φ2.51mm
11. ELV及びRoHS適合品  
ELV AND RoHS COMPLIANT



SECTION A-A  
Scale 10:1



SECTION B-B  
Scale 10:1



バラ状 LOOSE	503195-1100	503195-****
連鎖状 CHAIN	503195-1000	
端子形状 TERMINAL CONFIGURATION	オーダー番号 ORDER No.	MODEL No.

RELEASED EC NO: J2008-3396 DRWN: SAKIYAMA 2008/03/25 CHKD: SSAT003 2008/03/26 APPR: S ICHIKAWA 2008/03/26	GENERAL TOLERANCES (UNLESS SPECIFIED)		DIMENSION STYLE MM ONLY		SCALE 5:1	DESIGN UNITS METRIC	THIRD ANGLE PROJECTION
	10 UNDER	±0.20	DRAWN BY S. AKIYAMA	DATE 08/02/06	TITLE ROBOT CONN. 36P PLUG CRIMP TERMINAL		
	10 OVER 30 UNDER	±0.25	CHECKED BY S. SATO	DATE 08/02/06			
	30 OVER	±0.30	APPROVED BY S. ICHIKAWA	DATE 08/02/06	MOLEX INCORPORATED DOCUMENT NO. SD-503195-001 SHEET NO. 1 OF 1		
ANGULAR ±3 °		MATERIAL NO. SEE CHART					
DRAFT WHERE APPLICABLE MUST REMAIN WITHIN DIMENSIONS		THIS DRAWING CONTAINS INFORMATION THAT IS PROPRIETARY TO MOLEX INCORPORATED AND SHOULD NOT BE USED WITHOUT WRITTEN PERMISSION					