

●For 3-Phase Motor Drivers

| Part Number | Circuit Count | V _{CE0} (V)/ V _{DSS} (V)/ V _{CEs} (V) | I _C (A)/ I _D (A) | h _{FE} (min) | R _{Ds(ON)} max (Ω) | Equivalent Circuit | Package |
|-------------|---------------|--|--|-----------------------|-----------------------------|--------------------|---------------------------|
| STA303A | 3 | 100 | 4 | 1000 | | 4 | SIP8 (STA8Pin) |
| STA302A | 3 | -50 | -4 | 1000 | | 5 | SIP8 (STA8Pin) |
| SLA5212 | 6 | 35 | ±8 | | 70m | 14 | SIP15 with Fin (SLA15Pin) |
| SLA5096 | 6 | 55 | ±8 | | 80m | 14 | SIP15 with Fin (SLA15Pin) |
| SLA5059 | 6 | 60 | ±4 | | 0.55 | 6 | SIP12 with Fin (SLA12Pin) |
| SLA5060 | 6 | 60 | ±6 | | 0.22 | 6 | SIP12 with Fin (SLA12Pin) |
| SLA5061 | 6 | 60 | ±10 | | 0.14 | 6 | SIP12 with Fin (SLA12Pin) |
| SLA5064 | 6 | 60 | ±10 | | 0.14 | 7 | SIP12 with Fin (SLA12Pin) |
| SMA6080 | 6 | ±60 | ±2 | 2000 | | 9 | SIP12 (SMA12Pin) |
| SMA6010 | 6 | ±60 | ±4 | 2000 | | 9 | SIP12 (SMA12Pin) |
| SLA6012 | 6 | ±60 | ±4 | 2000 | | 8 | SIP12 with Fin (SLA12Pin) |
| SMA5127 | 6 | ±60 | ±4 | | 0.55 | 10 | SIP12 (SMA12Pin) |
| SLA5022 | 6 | ±60 | ±6 | 2000 | 0.22 | 11 | SIP12 with Fin (SLA12Pin) |
| SLA6023 | 6 | ±60 | ±6 | 2000 | | 8 | SIP12 with Fin (SLA12Pin) |
| SLA6024 | 6 | ±60 | ±8 | 2000 | | 8 | SIP12 with Fin (SLA12Pin) |
| SLA6026 | 6 | ±60 | ±10 | 2000 | | 8 | SIP12 with Fin (SLA12Pin) |
| SMA5125 | 6 | ±60 | ±10 | | 0.14 | 7 | SIP12 (SMA12Pin) |
| SLA6022 | 6 | ±80 | ±5 | 2000 | | 8 | SIP12 with Fin (SLA12Pin) |
| SLA6020 | 6 | ±100 | ±5 | 2000 | | 9 | SIP12 with Fin (SLA12Pin) |
| SMA5130 | 6 | ±250 | ±2.5 | 2000 | 0.9 | 16 | SIP15 (SMA15Pin) |
| SMA5131 | 6 | 250 | 2 | | 1.8 | 13 | SIP12 (SMA12Pin) |
| SMA5112 | 6 | 250 | 7 | | 0.5 | 13 | SIP12 (SMA12Pin) |
| SMA5117 | 6 | 250 | 7 | | 0.25 | 13 | SIP12 (SMA12Pin) |
| SMA5132 | 6 | 500 | 1.5 | | 4 | 13 | SIP12 (SMA12Pin) |
| SMA5133 | 6 | 500 | 2.5 | | 2 | 13 | SIP12 (SMA12Pin) |
| SLA5075 | 6 | 500 | ±5 | | 1.4 | 12 | SIP15 with Fin (SLA15Pin) |
| SMA5118 | 6 | 500 | ±5 | | 1.4 | 13 | SIP12 (SMA12Pin) |
| SLA5201 | 6 | 600 | 7 | | | 15 | SIP15 with Fin (SLA15Pin) |

●For Driving Stepping Motor with Two Supplies

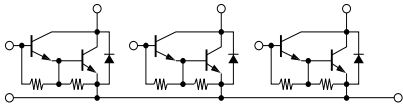
| Part Number | Circuit Count | V _{CE0} (V)/ V _{DSS} (V) | I _C (A)/ I _D (A) | h _{FE} (min) | R _{Ds(ON)} max (Ω) | Equivalent Circuit | Package |
|-------------|---------------|--|--|-----------------------|-----------------------------|--------------------|------------------|
| SMA6511 | 5 | 100±15/-60 | 1.5/-3 | 2000 | | 17 | SIP12 (SMA12Pin) |

●For 5-Phase Motor Drive

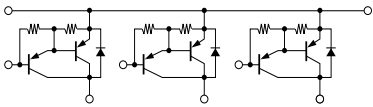
| Part Number | Circuit Count | V _{CE0} (V)/ V _{DSS} (V) | I _C (A)/ I _D (A) | h _{FE} (min) | R _{Ds(ON)} max (Ω) | Equivalent Circuit | Package |
|-------------|---------------|--|--|-----------------------|-----------------------------|--------------------|---------------------------|
| SLA5074 | 4 | 60 | 5 | | 0.3 | 18 | SIP15 with Fin (SLA15Pin) |
| SLA5065 | 4 | 60 | 7 | | 0.1 | 18 | SIP15 with Fin (SLA15Pin) |
| SLA5073 | 6 | 60 | 5 | | 0.3 | 14 | SIP15 with Fin (SLA15Pin) |
| SLA5068 | 6 | 60 | 7 | | 0.1 | 14 | SIP15 with Fin (SLA15Pin) |

●Equivalent Circuit (for Motor Driver)

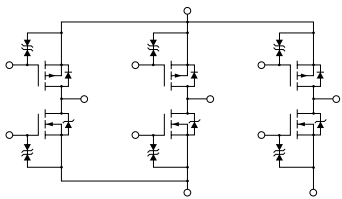
④



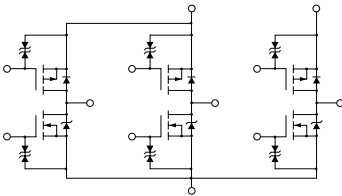
⑤



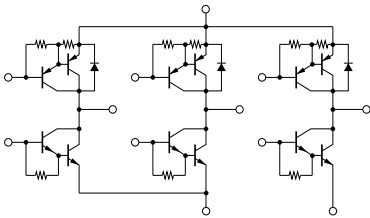
⑥



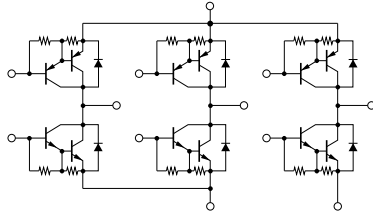
⑦



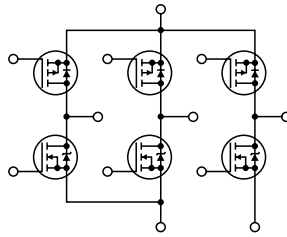
⑧



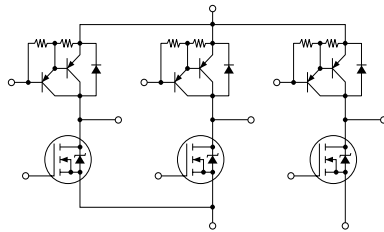
⑨



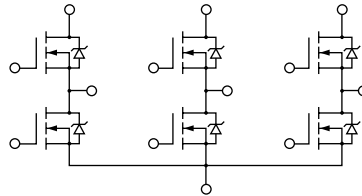
⑩



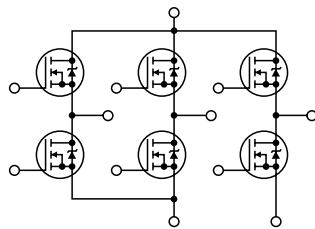
⑪



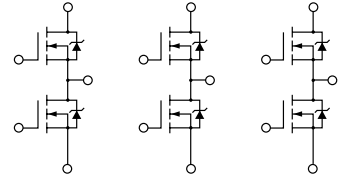
⑫



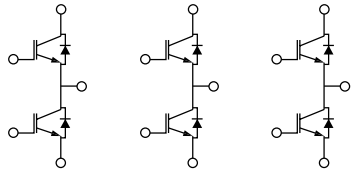
⑬



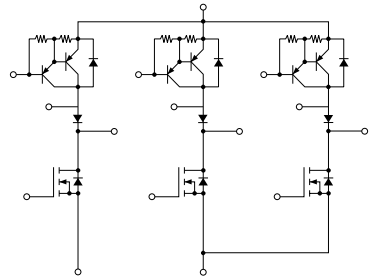
⑭



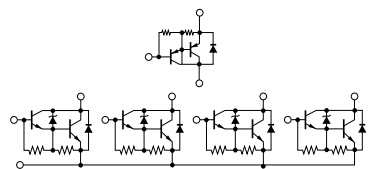
⑮



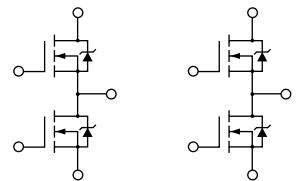
⑯



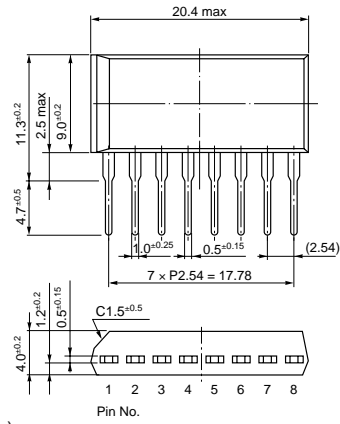
⑰



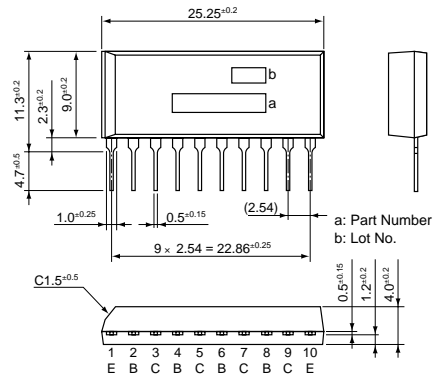
⑱



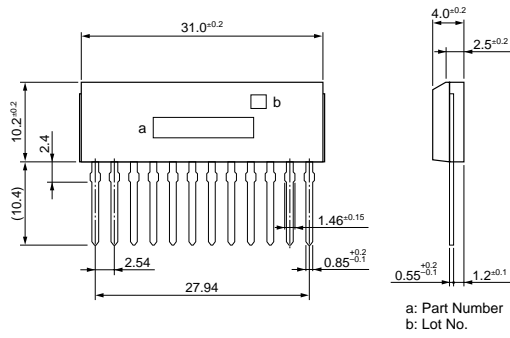
• SIP 8 (STA8Pin)



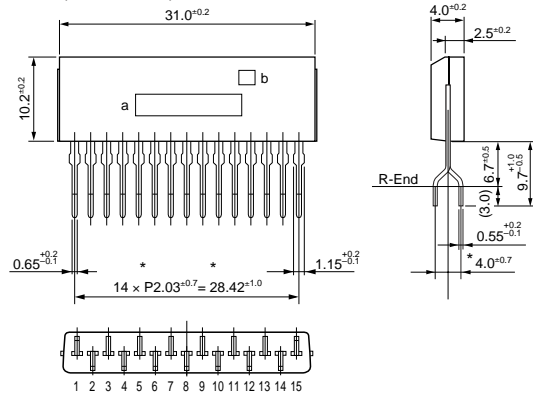
• SIP 10 (STA10Pin)



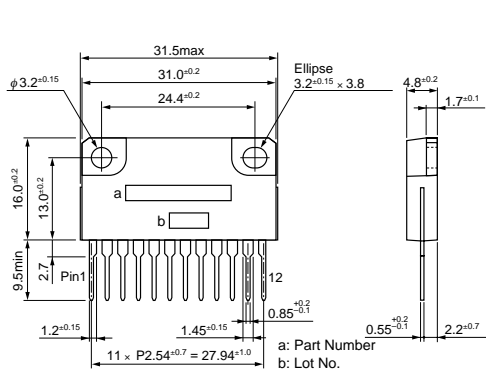
• SIP 12 (SMA12Pin)



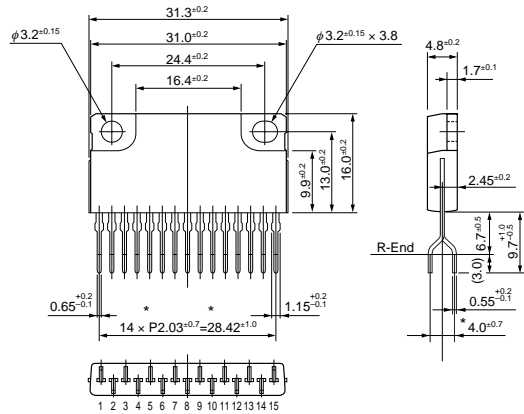
• SIP 15 (SMA15Pin)



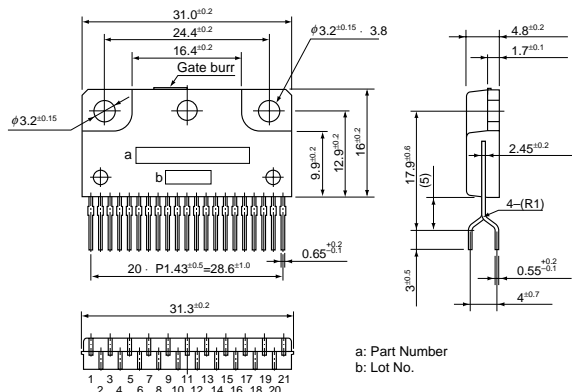
• SIP 12 with Fin (SLA12Pin)



• SIP 15 with Fin (SLA15Pin)



• SIP 15 with Fin (SLA15Pin)



(Unit:mm)