

- NOTES:
1. MATERIAL: .022 ±.001 THICK C.R. ANNEALED AISI-SAE 1050.
 2. HEAT TREATMENT: HARDEN & TEMPER TO Rc 44-47.
 3. ELECTRO-ZINC PLATE .0002/.0005 (SEE NOTE 4).
 4. BAKE AT 375° ±25° F. FOR 4 HOURS - BAKING OPERATION TO BE DONE WITHIN 4 HOURS AFTER PLATING TO PROVIDE FOR HYDROGEN EMBRITTLMENT RELIEF.

NO COMPONENT NO		DESCRIPTION		QTY/M	U/M
BILL OF MATERIAL					
MATERIAL SPEC		SEE NOTE 1		FINISH SEE NOTES 2, 3 & 4	
COPIES TO	DRW	JMB	DATE	SCALE	4=1
1	9		2/19/88		
2	10			SUPER DRW	
3	12				
4	13			RAW STK WT	LBS/M
5	14				
6	15				
7	16			TOLERANCE UNLESS OTHERWISE SPECIFIED	
8	17			TWO PLACE DEC ±.01	
	18			THREE PLACE DEC ±.005	ANGULAR ±1°
TITLE					
LOCKWASHER (20 TOOTH)					

LTR	REVISION	CHK	APD
G	39025C- REVISED & REDRAWN ON NEW FORMAT 3/13/98 JMB		
H	81022D-REMOVE 689487 FROM MAT'L SPEC. 01/26/01 PJM		

UNLESS OTHERWISE SPECIFIED, DIMENSIONS DO NOT INCLUDE PLATING.

CPK DENOTES CRITICAL CHARACTERISTICS.

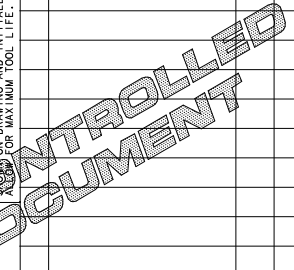
CPK DENOTES CPK DIMENSIONS - MINIMUM CPK VALUE

CPK DENOTES A CHARACTERISTIC THAT PROVIDES AN INDICATION OF THE EFFECTS OF MEASUREMENT PROCEDURE FOR MEASUREMENT OF THIS FEATURE TO BE USED IN SELF-INSPECTION INSTRUCTIONS.

CPK DENOTES CP DIMENSIONS - MINIMUM CP VALUE

CPK DENOTES CPK DIMENSIONS - MINIMUM CP VALUE

CPK DENOTES CPK DIMENSIONS - MINIMUM CP VALUE LOCATED TO THE RIGHT OF THE DIMENSIONAL SYMBOL FOR MAXIMUM TOOL LIFE.



Littelfuse
 DES PLAINES, ILL INOIS 60016

REVISION: H
 DRAWING NO: 905-023