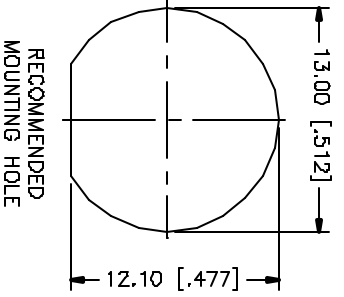
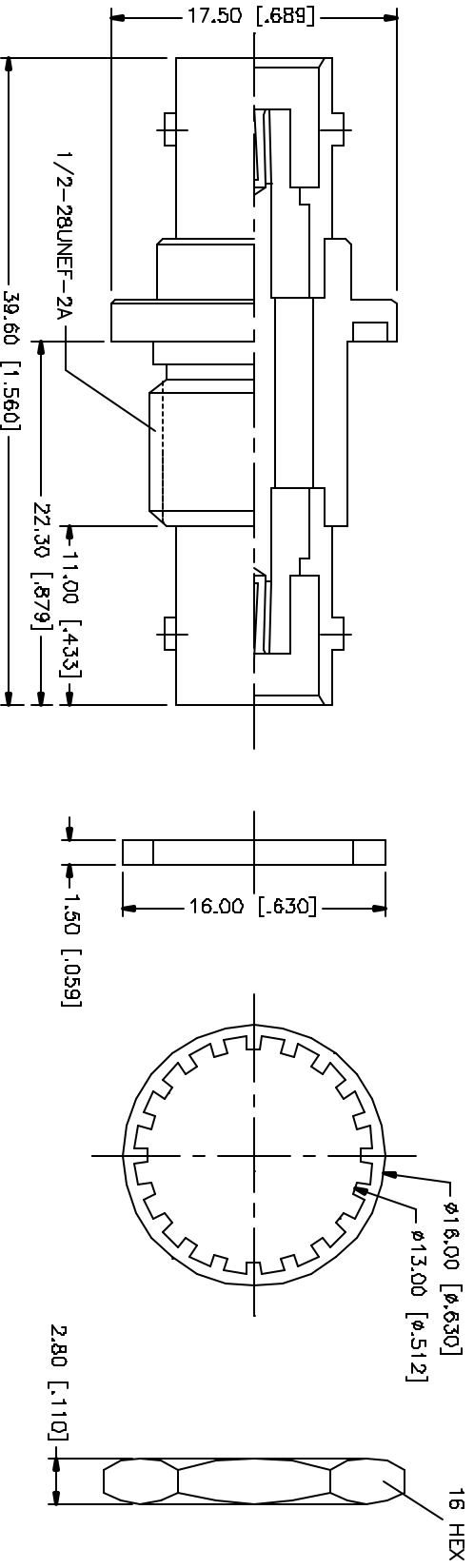


REV.	DATE	DESCRIPTION
NC	05/01/04	INITIAL RELEASE



RECOMMENDED MOUNTING HOLE

NOTE:
1. MAX. PANEL THICKNESS = 7mm

QTY	DESCRIPTION	MATERIAL	FINISH	QTY	UNIT
1	HEX NUT	BRASS	NICKEL	1	
1	LOCK WASHER	BRASS	NICKEL	1	
1	GASKET	RUBBER	RED	1	
1	CONTACT PIN	PHOS. BRONZE	COLD	1	
1	INSULATOR	DELFIN	NATURAL	1	
1	HOUSING/BODY	BRASS	NICKEL	1	

UNLESS OTHERWISE SPECIFIED DIMENSIONS ARE IN MILLIMETERS AND THE DECIMAL EQUIVALENT ONLY.	APPROVALS	DATE
TOLERANCES UNLESS OTHERWISE SPECIFIED:	G.R.S.	05/01/04
0.5 - 3.0mm ± 0.20mm	CHECKED	
3.0 - 12.0mm ± 0.40mm	ISSUED	
12.0mm - 30.0mm ± 0.50mm	SHEET	
30.0mm - 120.0mm ± 0.80mm	1 OF 1	
UNLESS OTHERWISE SPECIFIED DIMENSIONS FOR INCHES ARE:	DWG. NO.	112434.DWG
0.020 - 0.315 = ± 0.007"	REV.	NC
0.315 - 1.180 = ± 0.015"	SIZE	A
1.180 - 4.724 = ± 0.020"	SCALE	NA
DO NOT SCALE DRAWINGS	PART DESCRIPTION	
	BNC FEMALE TO FEMALE BULKHEAD ADAPTER	
	PART NO. 112434	
	DWD FILE C:/112/112434.DWG	

Amphenol Connex