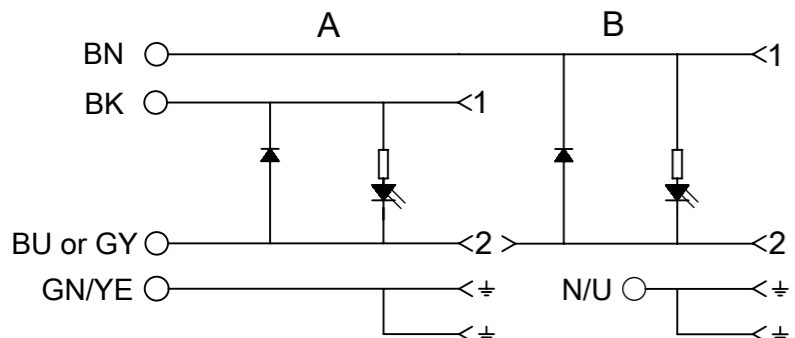
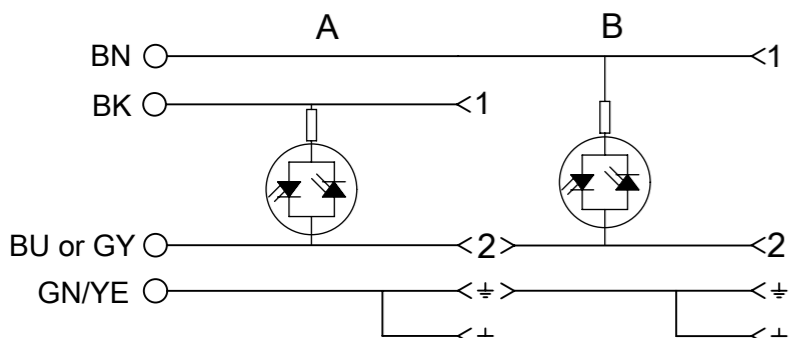


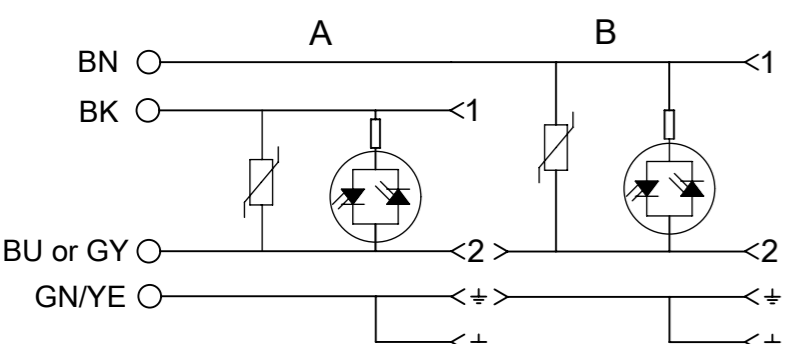
ELECTRICAL DIAGRAM - C3



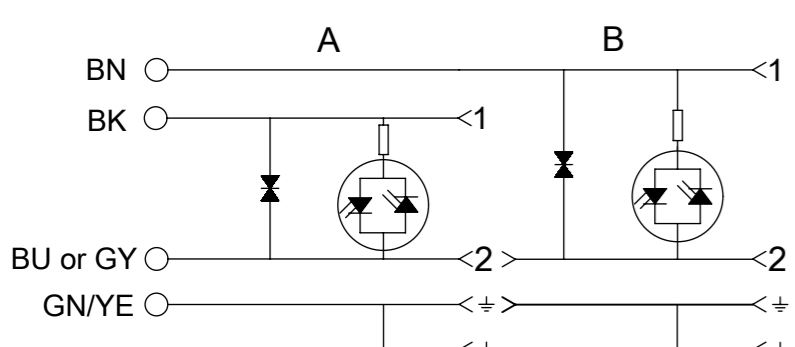
ELECTRICAL DIAGRAM - A1



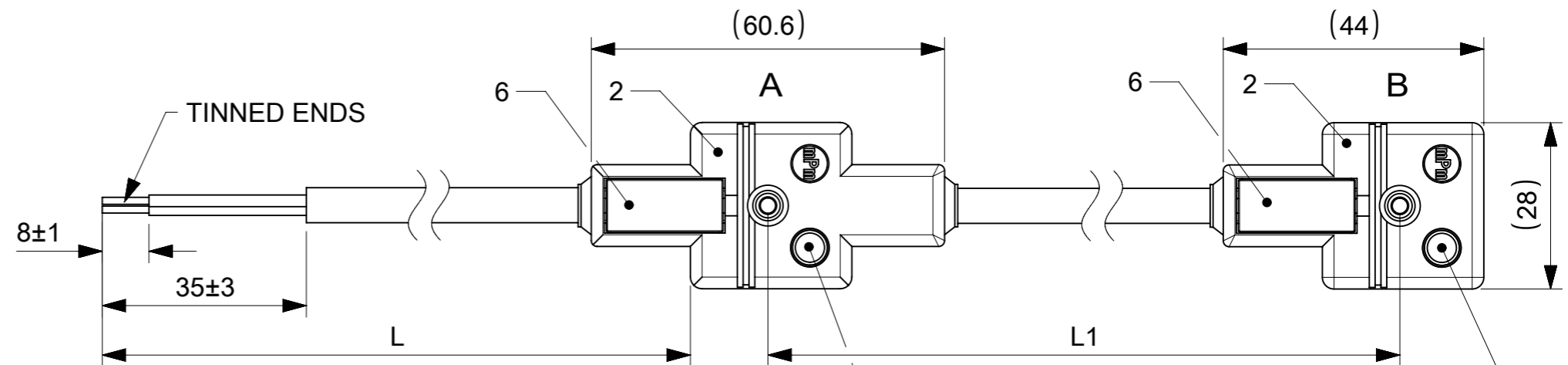
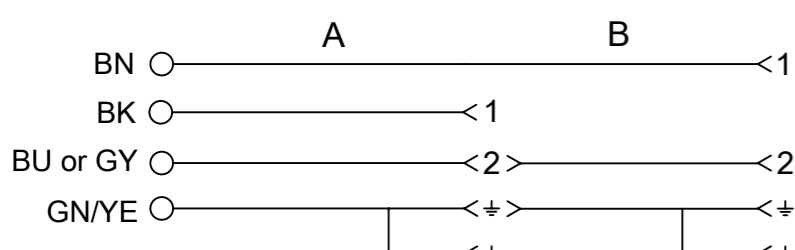
ELECTRICAL DIAGRAM - C4



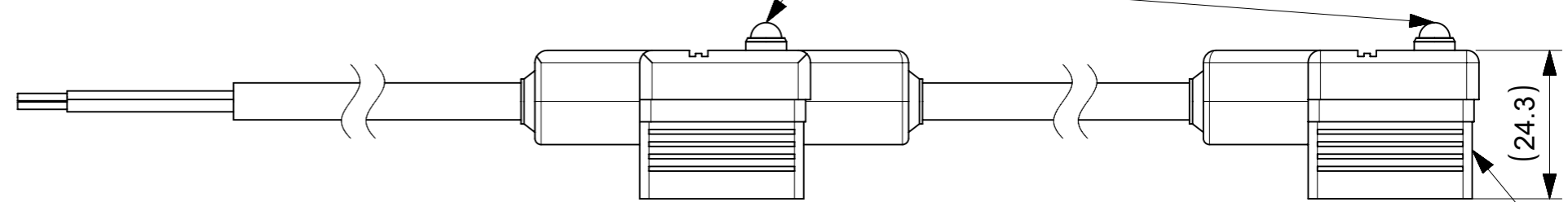
ELECTRICAL DIAGRAM - S0



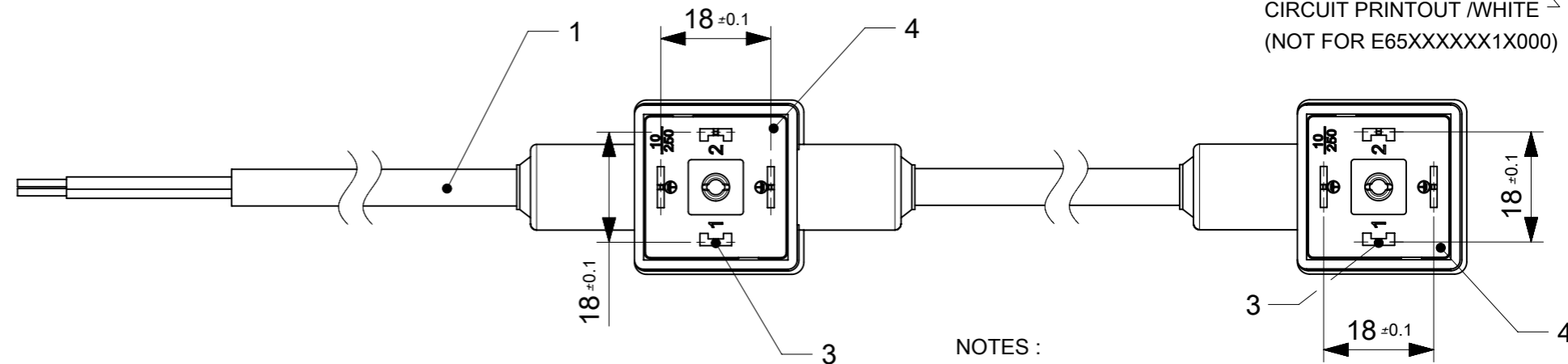
ELECTRICAL DIAGRAM - 00



IN CASE OF E65XXXXXXX1X000, WITHOUT LED



CIRCUIT PRINTOUT /WHITE (NOT FOR E65XXXXXXX1X000)



NOTES :

- ELECTRICAL - CURRENT : MAX. 5.0A
- CONTACT RESISTANCE : ≤15 milliohms MAX.
- INSULATION RESISTANCE : 100 Megaohms MIN.
- PHYSICAL - OPERATING TEMPERATURE WITH : NITRILE RUBBER (NBR) GASKET : -40°C TO +90°C
- LIVE CONTACT DISTANCE : FORM A - 18.00mm
- ENVIRONMENTAL - IP65 SEALING PROTECTION(FIXING SCREW)

BILL OF MATERIALS

ITEM	QTY.	DESCRIPTION	MATERIAL	FINISH
12	0/2	INTEGRATED GASKET	NBR	-
11	0/2	WASHER	NBR	-
10	0/2	SCREW M3x27	STEEL	ZINC
9	0/2	FLAT GASKET	NBR/SILICONE	-
8	0/2	PROFILE GASKET	NBR/SILICONE	-
7	0/2	SCREW M3x25	STEEL	ZINC
6	2	LABEL WHITE	ABS	-
5	0/2	PCB	-	-
4	2	INSERT DIN A	PA66+25%G V0	-
3	8	CONTACT DIN	BRASS	SILVER
2	-	MOULDING MATERIAL	PP	-
1	-	CABLE (SEE SHEET 3)	-	-

THIS DRAWING CONTAINS INFORMATION THAT IS PROPRIETARY TO MOLEX ELECTRONIC TECHNOLOGIES, LLC AND SHOULD NOT BE USED WITHOUT WRITTEN PERMISSION

DIMENSION UNITS	SCALE	CURRENT REV DESC: OBSOLETE PART NUMBERS	
mm	1:1		
GENERAL TOLERANCES (UNLESS SPECIFIED)			
ANGULAR TOL	± 1.0°		
4 PLACES	±	EC NO: 650268	2020/10/29
3 PLACES	±	DRWN: SUGEEB	2020/12/18
2 PLACES	± 0.05	CHK'D: GGA	2020/12/18
1 PLACE	± 0.3	APPR: GGA	2020/12/18
0 PLACES	± 0.5	INITIAL REVISION:	
DRAFT WHERE APPLICABLE MUST REMAIN WITHIN DIMENSIONS		DRWN: SSM	2020/07/31
THIRD ANGLE PROJECTION		APPR: RSILLER	2020/09/04
DRAWING	SERIES	MATERIAL NUMBER	CUSTOMER
A3-SIZE	121055	SEE SHEET 4	GENERAL MARKET
DOCUMENT NUMBER		DOC TYPE	DOC PART
1210550038		PSD	000
SHEET NUMBER		REVISION	
1 OF 4		A1	

**molex**

STANDARD E653 DIN FORM A

PRODUCT CUSTOMER DRAWING

DOCUMENT NUMBER: 1210550038

DOC TYPE: PSD

DOC PART: 000

REVISION: A1

DATE: 2020/01/14

# ENGINEERING No. MATRIX

**E 6 5 3 X X X X X X 1 X X X X**

E - Packing without bag  
W - Single Packing  
Q - Quick Packing

Number of Wires  
2 - 2 Poles  
3 - 2 Poles + Ground  
A - M12 STR , B - 90°

Cable type:  
See Table

Head Colour:  
G - Grey  
N - Black  
A - CSA-UL Black  
B - CSA-UL Grey

Cable Length in Meters (L):  
A=1  
B=1.5  
C=2  
D=2.5  
E=3  
F=3.5  
G=4  
H=4.5  
L=5  
M=5.5  
N=6  
P=6.5  
Q=7  
R=7.5  
S=8  
T=8.5  
U=9  
K=10

Cable Length in cm Between 2 connectors (L1)  
15=15 cm  
30=30 cm  
1K=100 cm  
min length=13 cm

Earth PIN Location:  
1=6/12 - earth on 6H/12H  
2=12/1 earth on 12H  
6=6/1 1 earth on 6H

Internal Circuit  
see Wiring Configuration

Type of Gasket and Screw:  
1 = NBR Profile Gasket + Fixing Screw M3x25mm  
2 = NBR Flat Gasket + Fixing Screw M3x25mm  
3 = Silicone Profile Gasket + Fixing Screw M3x25mm  
4 = Silicone Flat Gasket + Fixing Screw M3x25mm  
P = NBR Integrated Gasket + Fixing Screw with Washer M3x27mm Assembled on Connector  
R = NBR Integrated Gasket + Fixing Screw with Washer M3x27mm NOT Assembled on Connector  
T = NBR Profile Gasket + Fixing Screw with Washer M3x27mm

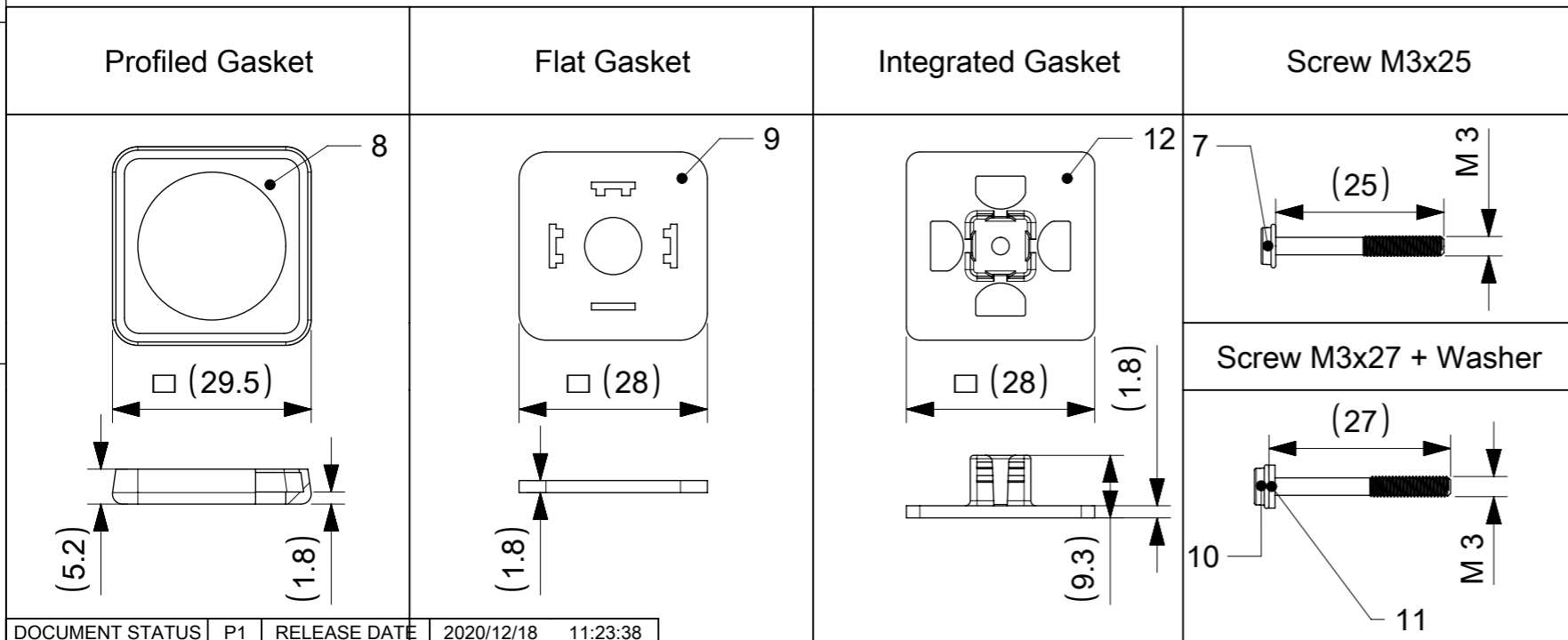
Voltage and LED color

1= 12V  
2= 24V  
3= 48V  
4= 115V  
5= 230V  
**RED LED**

A= 12V  
B= 24V  
C= 48V  
D= 115V  
E= 230V  
**GREEN LED**

G= 12V  
H= 24V  
K= 48V  
L= 115V  
M= 230V  
**YELLOW LED**

## Type of Screws and Gaskets


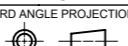


THIS DRAWING CONTAINS INFORMATION THAT IS PROPRIETARY TO MOLEX ELECTRONIC TECHNOLOGIES, LLC AND SHOULD NOT BE USED WITHOUT WRITTEN PERMISSION		CURRENT REV DESC: OBSOLETE PART NUMBERS		<b>molex</b>	
STANDARD E653 DIN FORM A		PRODUCT CUSTOMER DRAWING			
EC NO: 650268		2020/10/29		DOCUMENT NUMBER	
DRWN: SUGEEB		2020/12/18		1210550038	
CHK'D: GGA		2020/09/04		DOC TYPE	
APPR: GGA		2020/09/04		PSD	
INITIAL REVISION:		2020/07/31		DOC PART	
DRWN: SSM		2020/09/04		000	
APPR: RSILLER		2020/09/04		REVISION	
DRAFT WHERE APPLICABLE MUST REMAIN WITHIN DIMENSIONS		THIRD ANGLE PROJECTION		A1	
DRAWING		SERIES		SHEET NUMBER	
A3-SIZE		121055		2 OF 4	
MATERIAL NUMBER		CUSTOMER			
SEE SHEET 4		GENERAL MARKET			

# TABLE 1 - CABLES

mPm	Code	Wires	Cross Section	Material	Colour	Diameter $\phi$
I	0	3	1 mm <sup>2</sup>	PVC CEI 2022 II O.R.	Grey RAL7035	6.4±0.2 mm
A	2	2	20 AWG	PVC CSA/UL 2661	Black	5.4±0.2 mm
A	2	3	20 AWG	PVC CSA/UL 2661	Black	5.6±0.2 mm
A	2	4	20 AWG	PVC CSA/UL 2661	Black	6.2±0.25 mm
A	2	5	20 AWG	PVC CSA/UL 2661	Black	7±0.2 mm
B	2	2	20 AWG	PUR CSA/UL 20668	Black	5.6±0.2 mm
B	2	3	20 AWG	PUR CSA/UL 20668	Black	5.6±0.2 mm
B	2	4	20 AWG	PUR CSA/UL 20668	Black	6.2±0.2 mm
B	2	5	20 AWG	PUR CSA/UL 20668	Black	7±0.2 mm
D	2	3	0.5 mm <sup>2</sup>	PVC TI2 CEI 20-20	Grey	5.5±0.2 mm
F	2	3	0.5 mm <sup>2</sup>	CNEOMO	Grey RAL7000	5.5±0.2 mm
I	2	2	0.5 mm <sup>2</sup>	PVC CEI 2022 II O.R.	Grey RAL7035	5.5+0.3/-0 mm
I	2	3	0.5 mm <sup>2</sup>	PVC CEI 2022 II O.R.	Grey RAL7035	5.5+0.3/-0 mm
I	2	4	0.5 mm <sup>2</sup>	PVC CEI 2022 II O.R.	Grey RAL7035	6.5±0.2 mm
I	2	5	0.5 mm <sup>2</sup>	PVC CEI 2022 II O.R.	Grey RAL7035	7±0.2 mm
N	2	2	0.5 mm <sup>2</sup>	PVCH03	Black	5.2±0.2 mm
N	2	3	0.5 mm <sup>2</sup>	PVCH03	Black	5.5±0.2 mm
N	2	4	0.5 mm <sup>2</sup>	PVCH03	Black	6.9 mm max
P	2	2	0.5 mm <sup>2</sup>	PUR-BLEND	Black	5.5±0.2 mm
P	2	3	0.5 mm <sup>2</sup>	PUR-BLEND	Black	5.5+0.3/-0 mm
P	2	4	0.5 mm <sup>2</sup>	PUR-BLEND	Black	6.5±0.2 mm
P	2	5	0.5 mm <sup>2</sup>	PUR-BLEND	Black	7+0.3/-0.1 mm
A	3	2	18 AWG	PVC CSA/UL 2661	Black	6.5±0.25 mm
A	3	3	18 AWG	PVC CSA/UL 2661	Black	6.5±0.25 mm
A	3	4	18 AWG	PVC CSA/UL 2661	Black	7±0.3 mm
A	3	5	18 AWG	PVC CSA/UL 2661	Black	7.8±0.25 mm
B	3	2	18 AWG	PUR CSA/UL 20668	Black	6.8±0.2 mm
B	3	3	18 AWG	PUR CSA/UL 20668	Black	6.5±0.2 mm
B	3	4	18 AWG	PUR CSA/UL 20668	Black	7±0.2 mm
B	3	5	18 AWG	PUR CSA/UL 20668	Black	7.8±0.2 mm
D	3	3	0.75 mm <sup>2</sup>	PVC TI2 CEI 20-20	Grey	6.5±0.2 mm
D	3	4	0.75 mm <sup>2</sup>	PVC TI2 CEI 20-20	Grey	7.1±0.2 mm
I	3	2	0.75 mm <sup>2</sup>	PVC CEI 2022 II O.R.	Grey RAL7001	5.5±0.2 mm
I	3	3	0.75 mm <sup>2</sup>	PVC CEI 2022 II O.R.	Grey RAL7035	6±0.2 mm
I	3	4	0.75 mm <sup>2</sup>	PVC CEI 2022 II O.R.	Grey RAL7035	7±0.2 mm
N	3	2	0.75 mm <sup>2</sup>	PVCH05	Black	6.2±0.2 mm
N	3	3	0.75 mm <sup>2</sup>	PVCH05	Black	6.5±0.2 mm
N	3	4	0.75 mm <sup>2</sup>	PVCH05	Black	7.1±0.2 mm
N	3	5	0.75 mm <sup>2</sup>	PVCH05	Black	8.0+0.2/-0 mm
P	3	2	0.75 mm <sup>2</sup>	PUR-BLEND	Black	6.5±0.2 mm

mPm	Code	Wires	Cross Section	Material	Colour	Diameter $\phi$
P	3	3	0.75 mm <sup>2</sup>	PUR-BLEND	Black	6.5±0.2 mm
P	3	4	0.75 mm <sup>2</sup>	PUR-BLEND	Black	7±0.2 mm
R	3	3	0.75 mm <sup>2</sup>	TPR HAL. FREE	Black	6.5±0.2 mm
T	3	3	0.75 mm <sup>2</sup>	PUR CSA/UL	Yellow	6.5±0.2 mm
Y	3	3	0.75 mm <sup>2</sup>	SIL/0300	Red	6.5±0.2 mm
F	4	3	1 mm <sup>2</sup>	CNEOMO	Grey RAL7000	7.1+0.2/-0 mm
F	4	4	1 mm <sup>2</sup>	CNEOMO	Grey RAL7000	7.1+0.2/-0 mm
I	4	2	1 mm <sup>2</sup>	PVC CEI 2022 II O.R.	Grey RAL7035	7.1+0.2/-0 mm
I	4	3	1 mm <sup>2</sup>	PVC CEI 2022 II O.R.	Grey RAL7035	7.1+0.2/-0 mm
N	4	2	1 mm <sup>2</sup>	PVCH05	Black	6.5±0.2 mm
N	4	3	1 mm <sup>2</sup>	PVCH05	Black	6.9±0.2 mm
R	4	3	1 mm <sup>2</sup>	TPR HAL. FREE	Black	7.1±0.2 mm
N	5	3	1.5 mm <sup>2</sup>	PVCH05	Black	8.3+0.2/-0 mm
I	6	2	0.35 mm <sup>2</sup>	PVC CEI 2022 II O.R.	Grey RAL7035	4.8±0.2 mm
A	7	3	20 AWG	PVC CSA/UL 2661	Yellow	5.6±0.2 mm
I	9	4	0.75 mm <sup>2</sup>	PVC CEI 2022 II O.R.	Grey RAL7035	7.3±0.2 mm

THIS DRAWING CONTAINS INFORMATION THAT IS PROPRIETARY TO MOLEX ELECTRONIC TECHNOLOGIES, LLC AND SHOULD NOT BE USED WITHOUT WRITTEN PERMISSION									
DIMENSION UNITS	SCALE	CURRENT REV DESC: OBSOLETE PART NUMBERS							
mm	1:1								
GENERAL TOLERANCES (UNLESS SPECIFIED)									
ANGULAR TOL	± 1.0°	STANDARD E653 DIN FORM A							
4 PLACES	±	PRODUCT CUSTOMER DRAWING							
3 PLACES	±	EC NO: 650268 DRWN: SUGEEB 2020/10/29 CHK'D: GGA 2020/12/18 APPR: GGA 2020/12/18							
2 PLACES	± 0.05	INITIAL REVISION:							
1 PLACE	± 0.3	DRWN: SSM 2020/07/31 APPR: RSILLER 2020/09/04							
0 PLACES	± 0.5	DOCUMENT NUMBER		DOC TYPE		DOC PART		REVISION	
DRAFT WHERE APPLICABLE MUST REMAIN WITHIN DIMENSIONS		1210550038		PSD		000		A1	
THIRD ANGLE PROJECTION		DRAWING		SERIES		MATERIAL NUMBER		CUSTOMER	
		A3-SIZE		121055		SEE SHEET 4		GENERAL MARKET	
								SHEET NUMBER	
								3 OF 4	



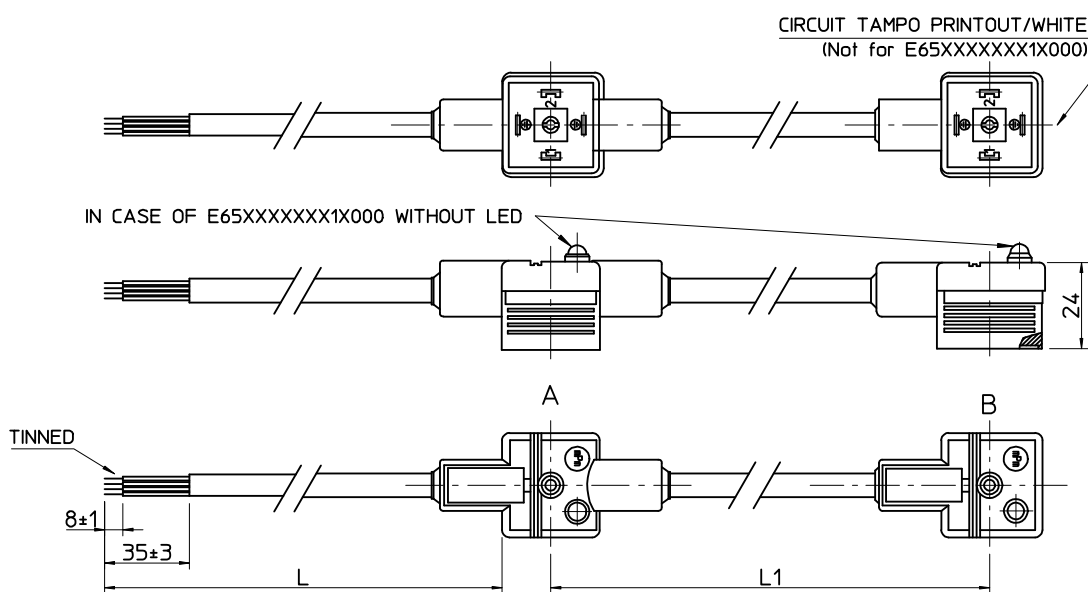
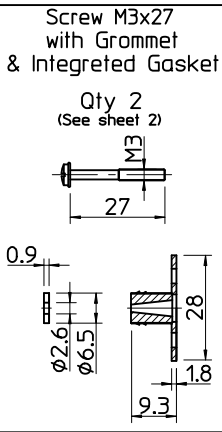
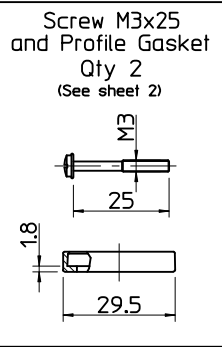
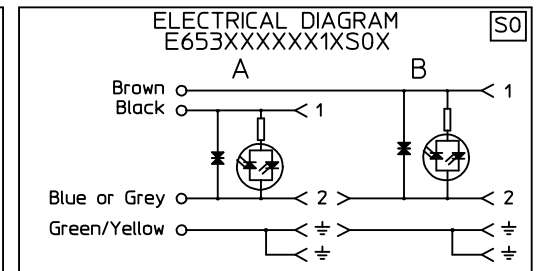
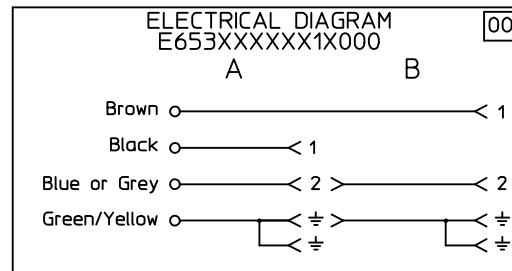
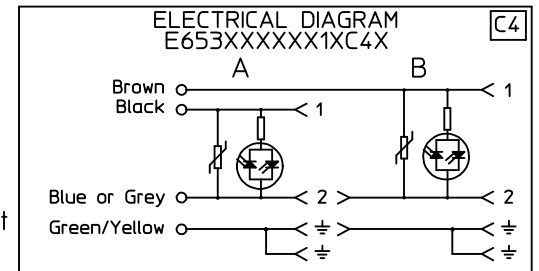
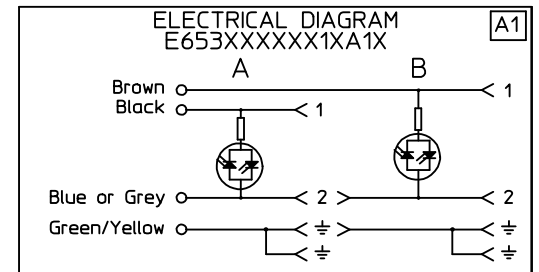
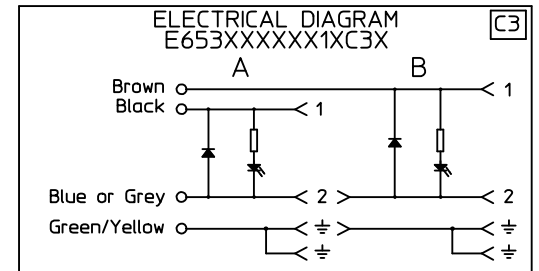


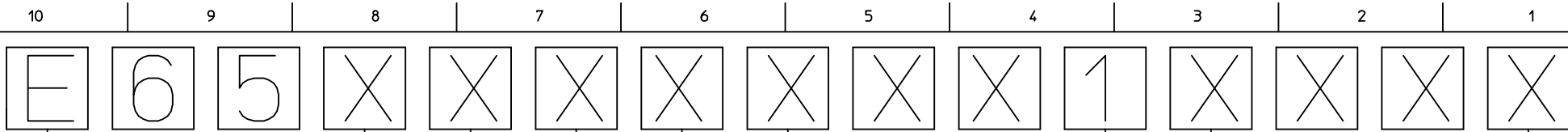
Table of length tolerances [mm]

Over	Up to and including	Tolerance
0	1000	±20
1000	3000	±30
3000	5000	±40
5000	10000	±50
10000	15000	±100
15000	20000	±150
20000		±L/100

NOTE: Ground on schematics does not apply to E652XXXXXX1XXXX



<p>DRAWING UPDATE EC NO: IPG2013-1505 DRWIN: JMARSZALEK 2013/03/28 CHKD: CHYKO APPR: MIWASIECZKO 2013/04/02</p>	<p>QUALITY SYMBOLS ▽=0 ◻=0</p>	<p>GENERAL TOLERANCES (UNLESS SPECIFIED)</p>		<p>DIMENSION STYLE MM ONLY</p>		SCALE	DESIGN UNITS	<p>FIRST ANGLE PROJECTION</p>
		mm	INCH	DRAWN BY	DATE	TITLE	<p>E65XXXXXX1XXXX DUAL DIN FORM A</p>	
		4 PLACES ± --- ± ---		JMARSZALEK	2013/01/16			
		3 PLACES ± --- ± ---		CHECKED BY	DATE			
2 PLACES ± --- ± ---		MSZWAJKOWSKI	2013/01/16					
1 PLACE ± --- ± ---		APPROVED BY	DATE					
0 PLACE ± --- ± ---		MIWASIECZKO	2013/02/12					
		ANGULAR ± --- °		MATERIAL NO.		DOCUMENT NO.		
		DRAFT WHERE APPLICABLE MUST REMAIN WITHIN DIMENSIONS		SEE SHEET 2&3		SD-121055-001		SHEET NO. 1 OF 4
				SIZE A3		THIS DRAWING CONTAINS INFORMATION THAT IS PROPRIETARY TO MOLEX INCORPORATED AND SHOULD NOT BE USED WITHOUT WRITTEN PERMISSION		



E - Packing without bags  
 W - Single packing  
 Q - Quick packing

NUMBER OF WIRES:  
 2=2 POLES  
 3=2 POLES+GROUND

CABLE TYPE  
 SEE TABLE 1

CABLE CROSS SECTION AREA  
 SEE TABLE 2

HEAD COLOUR:  
 G=GREY  
 N=BLACK  
 T=TRANSPARENT  
 A=CSA-UL BLACK  
 B=CSA-UL GREY

CABLE LENGTH IN CM BETWIN 2 MOULDINGS (L1)  
 Eg.:050=50 CM, 300=300 CM, 10K=1000 CM

EARTH PIN LOCATION:  
 1=DOUBLE EARTH ON 6H AND 12H,

TYPE OF GASKET AND SCREW:  
 1=NBR PROFILE GASKET + FIXING SCREWS (M3x25 mm).  
 2=NBR FLAT GASKET + FIXING SCREW (M3x25 mm).  
 3=SILICONE PROFILE GASKET + FIXING SCREW (M3x25 mm).  
 4=SILICON FLAT GASKET + FIXING SCREW (M3x25 mm).  
 P=INTEGRATED GASKET ASSEMBLED + FIXING SCREW WITH GROMMET ASSEMBLED (M3x27 mm).  
 R=INTAGRATED GASKET + FIXING SCREW + GROMMET (M3x27 mm).  
 T=PROFILE GASKET + FIXING SCREW + GROMMET (M3x27 mm).

INTERNAL CIRCUIT  
 WIRING CONFIGURATION

VOLTAGE AND LED COLOUR:

1= 12V	A= 12V	G= 12V
2= 24V	B= 24V	H= 24V
3= 48V	C= 48V	K= 48V
4= 115V	D= 115V	L= 115V
5= 230V	E= 230V	M= 230V

RED LED      GREEN LED      YELLOW LED

CABLE LENGHT IN METERS (L)  
 A=1  
 B=1,5  
 C=2  
 D=2,5  
 E=3  
 F=3,5  
 G=4  
 H=4,5  
 L=5  
 M=5,5  
 N=6  
 P=6,5  
 Q=7  
 R=7,5  
 S=8  
 T=8,5  
 U=9  
 K=10

<b>DRAWING UPDATE</b> EC NO: IPG2013-1505 DRWN: JMARSZALEK 2013/03/28 CHKD: APPR: MIWASIECZKO 2013/04/02	QUALITY SYMBOLS	GENERAL TOLERANCES (UNLESS SPECIFIED)	DIMENSION STYLE <b>MM ONLY</b>	SCALE <b>1:1</b>	DESIGN UNITS <b>METRIC</b>	FIRST ANGLE PROJECTION																																					
	=0 =0	<table border="1"> <tr> <th></th> <th>mm</th> <th>INCH</th> </tr> <tr> <td>4 PLACES</td> <td>± ---</td> <td>± ---</td> </tr> <tr> <td>3 PLACES</td> <td>± ---</td> <td>± ---</td> </tr> <tr> <td>2 PLACES</td> <td>± ---</td> <td>± ---</td> </tr> <tr> <td>1 PLACE</td> <td>± ---</td> <td>± ---</td> </tr> <tr> <td>0 PLACE</td> <td>± ---</td> <td>± ---</td> </tr> </table>		mm	INCH	4 PLACES	± ---	± ---	3 PLACES	± ---	± ---	2 PLACES	± ---	± ---	1 PLACE	± ---	± ---	0 PLACE	± ---	± ---	<table border="1"> <tr> <td>DRAWN BY</td> <td>DATE</td> <td>TITLE</td> </tr> <tr> <td>JMARSZALEK</td> <td>2013/01/16</td> <td rowspan="2">E65XXXXXXXX1XXXX DUAL DIN FORM A</td> </tr> <tr> <td>CHECKED BY</td> <td>DATE</td> </tr> <tr> <td>MSZWAJKOWSKI</td> <td>2013/01/16</td> <td rowspan="2"><b>molex</b></td> </tr> <tr> <td>APPROVED BY</td> <td>DATE</td> </tr> <tr> <td>MIWASIECZKO</td> <td>2013/02/12</td> <td>DOCUMENT NO.</td> </tr> <tr> <td>MATERIAL NO.</td> <td colspan="2">SD-121055-001</td> </tr> <tr> <td colspan="2">DRAFT WHERE APPLICABLE MUST REMAIN WITHIN DIMENSIONS</td> <td>SHEET NO. 2 OF 4</td> </tr> </table>	DRAWN BY	DATE	TITLE	JMARSZALEK	2013/01/16	E65XXXXXXXX1XXXX DUAL DIN FORM A	CHECKED BY	DATE	MSZWAJKOWSKI	2013/01/16	<b>molex</b>	APPROVED BY	DATE	MIWASIECZKO	2013/02/12	DOCUMENT NO.	MATERIAL NO.	SD-121055-001		DRAFT WHERE APPLICABLE MUST REMAIN WITHIN DIMENSIONS		SHEET NO. 2 OF 4
		mm	INCH																																								
	4 PLACES	± ---	± ---																																								
	3 PLACES	± ---	± ---																																								
2 PLACES	± ---	± ---																																									
1 PLACE	± ---	± ---																																									
0 PLACE	± ---	± ---																																									
DRAWN BY	DATE	TITLE																																									
JMARSZALEK	2013/01/16	E65XXXXXXXX1XXXX DUAL DIN FORM A																																									
CHECKED BY	DATE																																										
MSZWAJKOWSKI	2013/01/16	<b>molex</b>																																									
APPROVED BY	DATE																																										
MIWASIECZKO	2013/02/12	DOCUMENT NO.																																									
MATERIAL NO.	SD-121055-001																																										
DRAFT WHERE APPLICABLE MUST REMAIN WITHIN DIMENSIONS		SHEET NO. 2 OF 4																																									

Mollex PN	mPm	Code	Wires	Cross Section	Material	Color	Diameter Ø	DIN A-B	DIN C
1210180080	I	0	3	1 mm2	PVC CEI 2022 II O.R.	Grey RAL7035	6,4±0,2 mm	OK.	-
1210180467	A	2	2	20 AWG	PVC CSA/UL 2661	Black	5,4±0,2 mm	OK.	OK.
1210180128	A	2	3	20 AWG	PVC CSA/UL 2661	Black	5,6±0,2 mm	OK.	OK.
1210180394	A	2	4	20 AWG	PVC CSA/UL 2661	Black	6,2±0,25 mm	OK.	OK.
-	A	2	5	20 AWG	PVC CSA/UL 2661	Black	7±0,2 mm	OK.	-
1210180297	B	2	2	20 AWG	PUR CSA/UL 20668	Black	5,6±0,2 mm	OK.	OK.
1210180126	B	2	3	20 AWG	PUR CSA/UL 20668	Black	5,6±0,2 mm	OK.	OK.
1210180387	B	2	4	20 AWG	PUR CSA/UL 20668	Black	6,2±0,2 mm	OK.	OK.
-	B	2	5	20 AWG	PUR CSA/UL 20668	Black	7±0,2 mm	OK.	-
1210180122	D	2	3	0,5 mm2	PVC TI2 CEI 20-20	Grey	5,5±0,2 mm	OK.	OK.
-	F	2	3	0,5 mm2	CNOMO	Grey RAL7000	5,5±0,2 mm	OK.	OK.
1210180047	I	2	2	0,5 mm2	PVC CEI 2022 II O.R.	Grey RAL7035	5,5+0,3/-0 mm	OK.	OK.
1210180284	I	2	3	0,5 mm2	PVC CEI 2022 II O.R.	Grey RAL7035	5,6+0,3/-0 mm	OK.	OK.
1210180146	I	2	4	0,5 mm2	PVC CEI 2022 II O.R.	Grey RAL7035	6,5±0,2 mm	OK.	OK.
1210180177	I	2	5	0,5 mm2	PVC CEI 2022 II O.R.	Grey RAL7035	7±0,2 mm	OK.	-
1210180022	N	2	2	0,5 mm2	PVCH03	Black	5,2±0,2 mm	OK.	OK.
1202092753	N	2	3	0,5 mm2	PVCH03	Black	5,5±0,2 mm	OK.	OK.
1210180153	N	2	4	0,5 mm2	PVCH03	Black	6,9 mm max	OK.	OK.
1210180046	P	2	2	0,5 mm2	PUR - BLEND	Black	5,5±0,2 mm	OK.	OK.
1202092439	P	2	3	0,5 mm2	PUR - BLEND	Black	5,5 +0,3/-0 mm	OK.	OK.
1210180302	P	2	4	0,5 mm2	PUR - BLEND	Black	6,5±0,2 mm	OK.	OK.
1202092215	P	2	5	0,5 mm2	PUR - BLEND	Black	7+0,3/-0,1 mm	OK.	OK.
1210180409	A	3	2	18 AWG	PVC CSA/UL 2661	Black	6,5±0,25 mm	OK.	-
1210180129	A	3	3	18 AWG	PVC CSA/UL 2661	Black	6,5±0,25 mm	OK.	-
1210180159	A	3	4	18 AWG	PVC CSA/UL 2661	Black	7±0,3 mm	OK.	-
1210180464	A	3	5	18 AWG	PVC CSA/UL 2661	Black	7,8±0,25 mm	OK.	-
1210180351	B	3	2	18 AWG	PUR CSA/UL 20668	Black	6,8±0,2 mm	OK.	-
1210180127	B	3	3	18 AWG	PUR CSA/UL 20668	Black	6,5±0,2 mm	OK.	-
1210180160	B	3	4	18 AWG	PUR CSA/UL 20668	Black	7±0,2 mm	OK.	-
1210180463	B	3	5	18 AWG	PUR CSA/UL 20668	Black	7,8±0,2 mm	OK.	-
1210180073	D	3	3	0,75 mm2	PVC TI2 CEI 20-20	Grey	6,5±0,2 mm	OK.	OK.
1210180145	D	3	4	0,75 mm2	PVC TI2 CEI 20-20	Grey	7,1±0,2 mm	OK.	-
1202098206	I	3	2	0,75 mm2	PVC CEI 2022 II O.R.	Grey RAL7001	5,5±0,2 mm	OK.	-
1210180120	I	3	3	0,75 mm2	PVC CEI 2022 II O.R.	Grey RAL7035	6±0,2 mm	OK.	-
1210180143	I	3	4	0,75 mm2	PVC CEI 2022 II O.R.	Grey RAL7035	7±0,2 mm	OK.	-
1210180032	N	3	2	0,75 mm2	PVCH05	Black	6,2±0,2 mm	OK.	-
1210180069	N	3	3	0,75 mm2	PVCH05	Black	6,5±0,2 mm	OK.	-
1210180144	N	3	4	0,75 mm2	PVCH05	Black	7,1±0,2 mm	OK.	-
1210180174	N	3	5	0,75 mm2	PVCH05	Black	8,0+0,2-0 mm	OK.	-
1202094190	P	3	2	0,75 mm2	PUR - BLEND	Black	6,5±0,2 mm	OK.	-

Mollex PN	mPm	Code	Wires	Cross Section	Material	Color	Diameter Ø	DIN A-B	DIN C
1210180071	P	3	3	0,75 mm2	PUR - BLEND	Black	6,5±0,2 mm	OK.	-
1210180152	P	3	4	0,75 mm2	PUR - BLEND	Black	7±0,2 mm	OK.	-
1210180384	R	3	3	0,75 mm2	TPR HAL. FREE	Black	6,5±0,2 mm	OK.	-
1210180094	T	3	3	0,75 mm2	PUR CSA/UL	Yellow	6,5±0,2 mm	OK.	-
1210180309	Y	3	3	0,75 mm2	SIL/0300	Red	6,5±0,2 mm	OK.	-
1210180081	F	4	3	1 mm2	CNOMO	Grey RAL7000	7,1+0,2/-0 mm	OK.	-
-	F	4	4	1 mm2	CNOMO	Grey RAL7000	7,1+0,2/-0 mm	OK.	-
1210180042	I	4	2	1 mm2	PVC CEI 2022 II O.R.	Grey RAL7035	7,1+0,2/-0 mm	OK.	-
1210180079	I	4	3	1 mm2	PVC CEI 2022 II O.R.	Grey RAL7035	7,1+0,2/-0 mm	OK.	-
1210180036	N	4	2	1 mm2	PVCH05	Black	6,5±0,2 mm	OK.	-
1210180082	N	4	3	1 mm2	PVCH05	Black	6,9±0,2 mm	OK.	-
1210180117	R	4	3	1 mm2	TPR HAL. FREE	Black	7,1±0,2 mm	OK.	-
1210180085	N	5	3	1,5 mm2	PVCH05	Black	8,3+0,2/-0 mm	OK.	-
1210180313	I	6	2	0,35 mm2	PVC CEI 2022 II O.R.	Grey RAL7035	4,8±0,2 mm	OK.	-
-	A	7	3	20 AWG	PVC CSA/UL 2661	Yellow	5,6±0,2 mm	OK.	OK.
1210180149	I	9	4	0,75 mm2	PVC CEI 2022 II O.R.	Grey RAL7035	7,3±0,2 mm	OK.	-

TABLE 1 - CABLES TYPE

Code	Cable types	Features	Stranding
N	PVC	Application general purpose cable which has good resistance to water, but usually poor oil resistance.	0,5 mm2 = 15 x 0,20 0,75 mm2 = 21 x 0,20 1 mm2 = 28 x 0,20
I	CEI	Approved to IEC 332-2A, flame retardant and self extinguishing. Limited resistant to mineral oils.	0,5 mm2 = 28 x 0,15 0,75 mm2 = 42 x 0,15 1 mm2 = 32 x 0,20
P	PUR	Offer good resistance to oil and chemicals. Can swell when constantly immersed in water.	0,5 mm2 = 28 x 0,15 0,75 mm2 = 42 x 0,15 1 mm2 = 32 x 0,20
A	PVC CSA-UL	Approved to CSA-UL 2661, application general purpose cable which has good resistance to water, but usually poor oil resistance.	20 AWG = 32 x 0,15 18 AWG = 52 x 0,15
B	PUR CSA-UL	Approved to CSA-UL 20668, very good resistance to oil and chemicals.	20 AWG = 32 x 0,15 18 AWG = 52 x 0,15

DRAWING UPDATE  
EC NO: IPG2013-1505  
DRWN: JMARSZALEK 2013/03/28  
CHKD:  
APPR: MIWASIECZKO 2013/04/02

QUALITY SYMBOLS  
▽=0  
◻=0

GENERAL TOLERANCES (UNLESS SPECIFIED)

	mm	INCH
4 PLACES	± ---	± ---
3 PLACES	± ---	± ---
2 PLACES	± ---	± ---
1 PLACE	± ---	± ---
0 PLACE	± ---	± ---

ANGULAR ± --- °  
DRAFT WHERE APPLICABLE MUST REMAIN WITHIN DIMENSIONS

DIMENSION STYLE  
MM ONLY

DRAWN BY	DATE
JMARSZALEK	2013/01/16
CHECKED BY	DATE
MSZWAJKOWSKI	2013/01/16
APPROVED BY	DATE
MIWASIECZKO	2013/02/12

MATERIAL NO.  
SEE SHEET 2&3

SCALE  
1:1

DESIGN UNITS  
METRIC

FIRST ANGLE PROJECTION

TITLE  
E65XXXXXXXX1XXXX  
DUAL DIN FORM A

**molex**

DOCUMENT NO.  
SD-121055-001

SHEET NO.  
3 OF 4

THIS DRAWING CONTAINS INFORMATION THAT IS PROPRIETARY TO MOLEX INCORPORATED AND SHOULD NOT BE USED WITHOUT WRITTEN PERMISSION





Screw M3x25  
and Profile Gasket  
Qty 2  
(See sheet 2)

Screw M3x27  
with Grommet  
& Integrated Gasket  
Qty 2  
(See sheet 2)

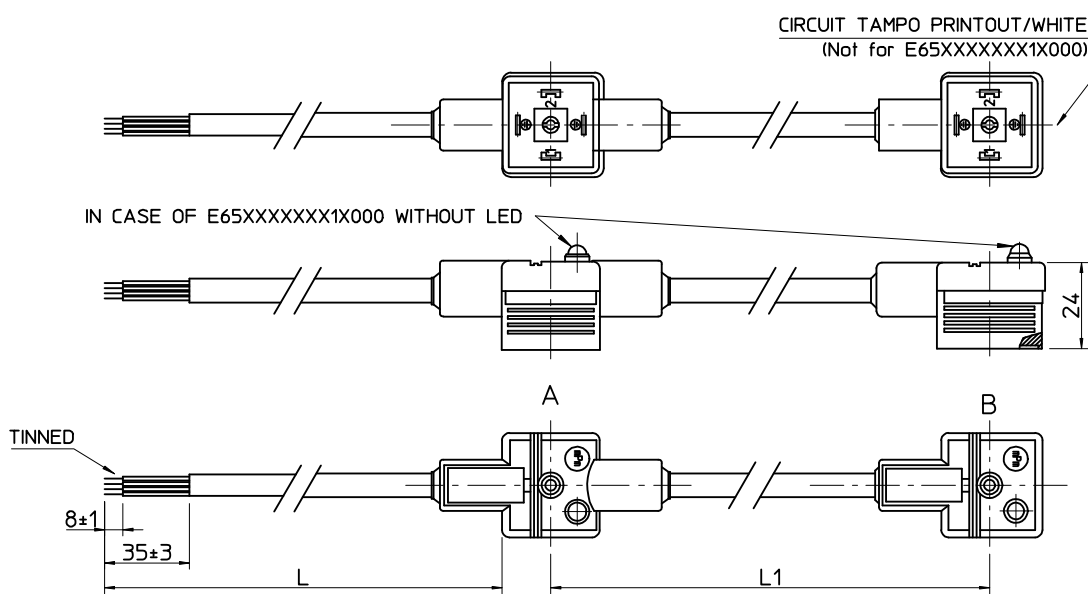
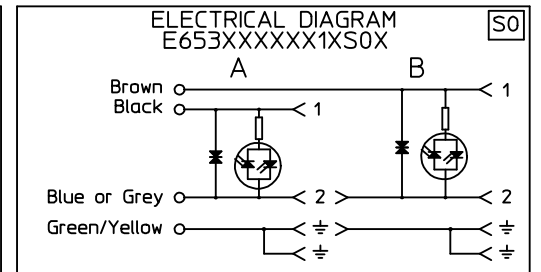
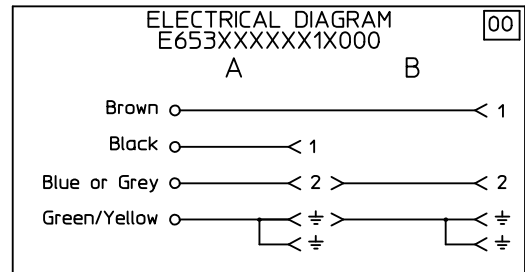
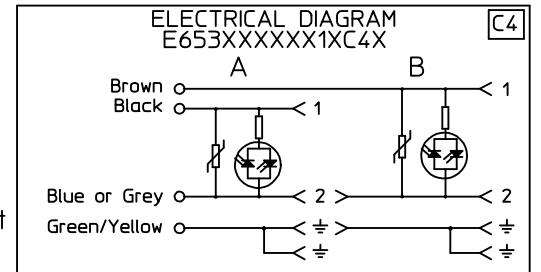
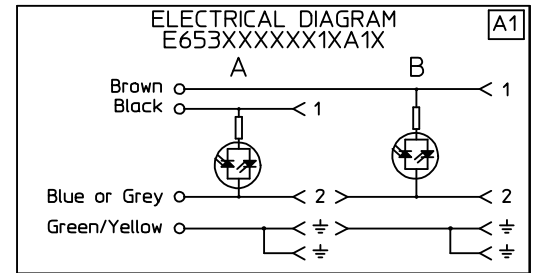
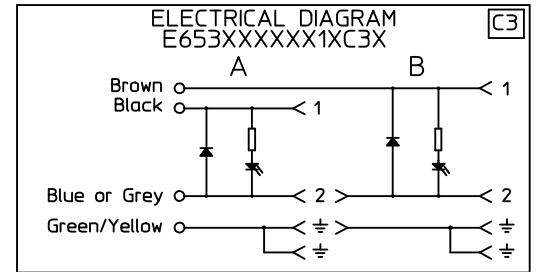


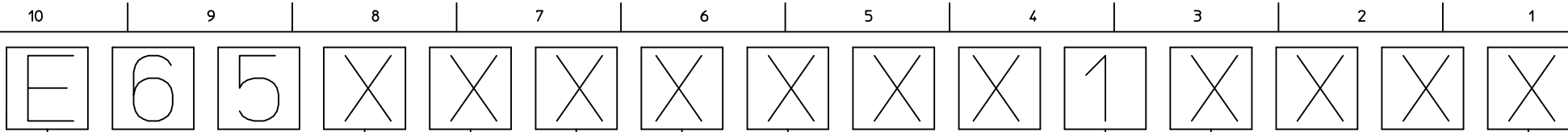
Table of length tolerances [mm]

Over	Up to and including	Tolerance
0	1000	±20
1000	3000	±30
3000	5000	±40
5000	10000	±50
10000	15000	±100
15000	20000	±150
20000		±L/100

NOTE: Ground on schematics does not apply to E652XXXXXX1XXXX



<p>DRAWING UPDATE EC NO: IPG2013-1505 DRWIN: JMARSZALEK 2013/03/28 CHKD: MIWASIECZKO APPR: MIWASIECZKO 2013/04/02</p>	<p>QUALITY SYMBOLS ▽=0 ◻=0</p>	<p>GENERAL TOLERANCES (UNLESS SPECIFIED)</p>		<p>DIMENSION STYLE MM ONLY</p>		SCALE	DESIGN UNITS	<p>FIRST ANGLE PROJECTION</p>
		mm	INCH	DRAWN BY	DATE	TITLE	<p>E65XXXXXX1XXXX DUAL DIN FORM A</p>	
		4 PLACES ± --- ± ---		JMARSZALEK	2013/01/16			
		3 PLACES ± --- ± ---		CHECKED BY	DATE			
2 PLACES ± --- ± ---		MSZWAJKOWSKI	2013/01/16					
1 PLACE ± --- ± ---		APPROVED BY	DATE					
0 PLACE ± --- ± ---		MIWASIECZKO	2013/02/12					
		ANGULAR ± --- °		MATERIAL NO.		DOCUMENT NO.		
		DRAFT WHERE APPLICABLE MUST REMAIN WITHIN DIMENSIONS		SEE SHEET 2&3		SD-121055-001		SHEET NO. 1 OF 4
		THIS DRAWING CONTAINS INFORMATION THAT IS PROPRIETARY TO MOLEX INCORPORATED AND SHOULD NOT BE USED WITHOUT WRITTEN PERMISSION						



E - Packing without bags  
 W - Single packing  
 Q - Quick packing

NUMBER OF WIRES:  
 2=2 POLES  
 3=2 POLES+GROUND

CABLE TYPE  
 SEE TABLE 1

CABLE CROSS SECTION AREA  
 SEE TABLE 2

HEAD COLOUR:

G=GREY  
 N=BLACK  
 T=TRANSPARENT  
 A=CSA-UL BLACK  
 B=CSA-UL GREY

CABLE LENGTH IN CM BETWEN 2 MOULDINGS (L1)  
 Eg.:050=50 CM, 300=300 CM, 10K=1000 CM

EARTH PIN LOCATION:

1=DOUBLE EARTH ON 6H AND 12H,

TYPE OF GASKET AND SCREW:

1=NBR PROFILE GASKET + FIXING SCREWS (M3x25 mm).  
 2=NBR FLAT GASKET + FIXING SCREW (M3x25 mm).  
 3=SILICONE PROFILE GASKET + FIXING SCREW (M3x25 mm).  
 4=SILICON FLAT GASKET + FIXING SCREW (M3x25 mm).  
 P=INTEGRATED GASKET ASSEMBLED + FIXING SCREW WITH GROMMET ASSEMBLED (M3x27 mm).  
 R=INTAGRATED GASKET + FIXING SCREW + GROMMET (M3x27 mm).  
 T=PROFILE GASKET + FIXING SCREW + GROMMET (M3x27 mm).

INTERNAL CIRCUIT

WIRING CONFIGURATION

VOLTAGE AND LED COLOUR:

1= 12V	A= 12V	G= 12V
2= 24V	B= 24V	H= 24V
3= 48V	C= 48V	K= 48V
4= 115V	D= 115V	L= 115V
5= 230V	E= 230V	M= 230V

RED LED      GREEN LED      YELLOW LED

CABLE LENGHT IN METERS (L)

A=1  
 B=1,5  
 C=2  
 D=2,5  
 E=3  
 F=3,5  
 G=4  
 H=4,5  
 L=5  
 M=5,5  
 N=6  
 P=6,5  
 O=7  
 R=7,5  
 S=8  
 T=8,5  
 U=9  
 K=10

<b>DRAWING UPDATE</b> EC NO: IPG2013-1505 DRWN: JMARSZALEK 2013/03/28 CHKD: APPR: MIWASIECZKO 2013/04/02	QUALITY SYMBOLS	GENERAL TOLERANCES (UNLESS SPECIFIED)	DIMENSION STYLE <b>MM ONLY</b>	SCALE <b>1:1</b>	DESIGN UNITS <b>METRIC</b>	FIRST ANGLE PROJECTION																																
	=0 =0	<table border="1"> <tr> <th></th> <th>mm</th> <th>INCH</th> </tr> <tr> <td>4 PLACES</td> <td>± ---</td> <td>± ---</td> </tr> <tr> <td>3 PLACES</td> <td>± ---</td> <td>± ---</td> </tr> <tr> <td>2 PLACES</td> <td>± ---</td> <td>± ---</td> </tr> <tr> <td>1 PLACE</td> <td>± ---</td> <td>± ---</td> </tr> <tr> <td>0 PLACE</td> <td>± ---</td> <td>± ---</td> </tr> </table>		mm	INCH	4 PLACES	± ---	± ---	3 PLACES	± ---	± ---	2 PLACES	± ---	± ---	1 PLACE	± ---	± ---	0 PLACE	± ---	± ---	<table border="1"> <tr> <th>DRAWN BY</th> <th>DATE</th> <th>TITLE</th> </tr> <tr> <td>JMARSZALEK</td> <td>2013/01/16</td> <td rowspan="5">E65XXXXXXXX1XXXX DUAL DIN FORM A</td> </tr> <tr> <th>CHECKED BY</th> <th>DATE</th> </tr> <tr> <td>MSZWAJKOWSKI</td> <td>2013/01/16</td> </tr> <tr> <th>APPROVED BY</th> <th>DATE</th> </tr> <tr> <td>MIWASIECZKO</td> <td>2013/02/12</td> </tr> </table>	DRAWN BY	DATE	TITLE	JMARSZALEK	2013/01/16	E65XXXXXXXX1XXXX DUAL DIN FORM A	CHECKED BY	DATE	MSZWAJKOWSKI	2013/01/16	APPROVED BY	DATE	MIWASIECZKO	2013/02/12			
		mm	INCH																																			
	4 PLACES	± ---	± ---																																			
	3 PLACES	± ---	± ---																																			
2 PLACES	± ---	± ---																																				
1 PLACE	± ---	± ---																																				
0 PLACE	± ---	± ---																																				
DRAWN BY	DATE	TITLE																																				
JMARSZALEK	2013/01/16	E65XXXXXXXX1XXXX DUAL DIN FORM A																																				
CHECKED BY	DATE																																					
MSZWAJKOWSKI	2013/01/16																																					
APPROVED BY	DATE																																					
MIWASIECZKO	2013/02/12																																					
ANGULAR ± --- ° DRAFT WHERE APPLICABLE MUST REMAIN WITHIN DIMENSIONS	MATERIAL NO. <b>SEE SHEET 2&amp;3</b>	DOCUMENT NO. <b>SD-121055-001</b>	SHEET NO. <b>2 OF 4</b>																																			
THIS DRAWING CONTAINS INFORMATION THAT IS PROPRIETARY TO MOLEX INCORPORATED AND SHOULD NOT BE USED WITHOUT WRITTEN PERMISSION																																						

Mollex PN	mPm	Code	Wires	Cross Section	Material	Color	Diameter Ø	DIN A-B	DIN C
1210180080	I	0	3	1 mm2	PVC CEI 2022 II O.R.	Grey RAL7035	6,4±0,2 mm	OK.	-
1210180467	A	2	2	20 AWG	PVC CSA/UL 2661	Black	5,4±0,2 mm	OK.	OK.
1210180128	A	2	3	20 AWG	PVC CSA/UL 2661	Black	5,6±0,2 mm	OK.	OK.
1210180394	A	2	4	20 AWG	PVC CSA/UL 2661	Black	6,2±0,25 mm	OK.	OK.
-	A	2	5	20 AWG	PVC CSA/UL 2661	Black	7±0,2 mm	OK.	-
1210180297	B	2	2	20 AWG	PUR CSA/UL 20668	Black	5,6±0,2 mm	OK.	OK.
1210180126	B	2	3	20 AWG	PUR CSA/UL 20668	Black	5,6±0,2 mm	OK.	OK.
1210180387	B	2	4	20 AWG	PUR CSA/UL 20668	Black	6,2±0,2 mm	OK.	OK.
-	B	2	5	20 AWG	PUR CSA/UL 20668	Black	7±0,2 mm	OK.	-
1210180122	D	2	3	0,5 mm2	PVC TI2 CEI 20-20	Grey	5,5±0,2 mm	OK.	OK.
-	F	2	3	0,5 mm2	CNOMO	Grey RAL7000	5,5±0,2 mm	OK.	OK.
1210180047	I	2	2	0,5 mm2	PVC CEI 2022 II O.R.	Grey RAL7035	5,5+0,3/-0 mm	OK.	OK.
1210180284	I	2	3	0,5 mm2	PVC CEI 2022 II O.R.	Grey RAL7035	5,6+0,3/-0 mm	OK.	OK.
1210180146	I	2	4	0,5 mm2	PVC CEI 2022 II O.R.	Grey RAL7035	6,5±0,2 mm	OK.	OK.
1210180177	I	2	5	0,5 mm2	PVC CEI 2022 II O.R.	Grey RAL7035	7±0,2 mm	OK.	-
1210180022	N	2	2	0,5 mm2	PVCH03	Black	5,2±0,2 mm	OK.	OK.
1202092753	N	2	3	0,5 mm2	PVCH03	Black	5,5±0,2 mm	OK.	OK.
1210180153	N	2	4	0,5 mm2	PVCH03	Black	6,9 mm max	OK.	OK.
1210180046	P	2	2	0,5 mm2	PUR - BLEND	Black	5,5±0,2 mm	OK.	OK.
1202092439	P	2	3	0,5 mm2	PUR - BLEND	Black	5,5 +0,3/-0 mm	OK.	OK.
1210180302	P	2	4	0,5 mm2	PUR - BLEND	Black	6,5±0,2 mm	OK.	OK.
1202092215	P	2	5	0,5 mm2	PUR - BLEND	Black	7+0,3/-0,1 mm	OK.	OK.
1210180409	A	3	2	18 AWG	PVC CSA/UL 2661	Black	6,5±0,25 mm	OK.	-
1210180129	A	3	3	18 AWG	PVC CSA/UL 2661	Black	6,5±0,25 mm	OK.	-
1210180159	A	3	4	18 AWG	PVC CSA/UL 2661	Black	7±0,3 mm	OK.	-
1210180464	A	3	5	18 AWG	PVC CSA/UL 2661	Black	7,8±0,25 mm	OK.	-
1210180351	B	3	2	18 AWG	PUR CSA/UL 20668	Black	6,8±0,2 mm	OK.	-
1210180127	B	3	3	18 AWG	PUR CSA/UL 20668	Black	6,5±0,2 mm	OK.	-
1210180160	B	3	4	18 AWG	PUR CSA/UL 20668	Black	7±0,2 mm	OK.	-
1210180463	B	3	5	18 AWG	PUR CSA/UL 20668	Black	7,8±0,2 mm	OK.	-
1210180073	D	3	3	0,75 mm2	PVC TI2 CEI 20-20	Grey	6,5±0,2 mm	OK.	OK.
1210180145	D	3	4	0,75 mm2	PVC TI2 CEI 20-20	Grey	7,1±0,2 mm	OK.	-
1202098206	I	3	2	0,75 mm2	PVC CEI 2022 II O.R.	Grey RAL7001	5,5±0,2 mm	OK.	-
1210180120	I	3	3	0,75 mm2	PVC CEI 2022 II O.R.	Grey RAL7035	6±0,2 mm	OK.	-
1210180143	I	3	4	0,75 mm2	PVC CEI 2022 II O.R.	Grey RAL7035	7±0,2 mm	OK.	-
1210180032	N	3	2	0,75 mm2	PVCH05	Black	6,2±0,2 mm	OK.	-
1210180069	N	3	3	0,75 mm2	PVCH05	Black	6,5±0,2 mm	OK.	-
1210180144	N	3	4	0,75 mm2	PVCH05	Black	7,1±0,2 mm	OK.	-
1210180174	N	3	5	0,75 mm2	PVCH05	Black	8,0+0,2-0 mm	OK.	-
1202094190	P	3	2	0,75 mm2	PUR - BLEND	Black	6,5±0,2 mm	OK.	-

Mollex PN	mPm	Code	Wires	Cross Section	Material	Color	Diameter Ø	DIN A-B	DIN C
1210180071	P	3	3	0,75 mm2	PUR - BLEND	Black	6,5±0,2 mm	OK.	-
1210180152	P	3	4	0,75 mm2	PUR - BLEND	Black	7±0,2 mm	OK.	-
1210180384	R	3	3	0,75 mm2	TPR HAL. FREE	Black	6,5±0,2 mm	OK.	-
1210180094	T	3	3	0,75 mm2	PUR CSA/UL	Yellow	6,5±0,2 mm	OK.	-
1210180309	Y	3	3	0,75 mm2	SIL/0300	Red	6,5±0,2 mm	OK.	-
1210180081	F	4	3	1 mm2	CNOMO	Grey RAL7000	7,1+0,2/-0 mm	OK.	-
-	F	4	4	1 mm2	CNOMO	Grey RAL7000	7,1+0,2/-0 mm	OK.	-
1210180042	I	4	2	1 mm2	PVC CEI 2022 II O.R.	Grey RAL7035	7,1+0,2/-0 mm	OK.	-
1210180079	I	4	3	1 mm2	PVC CEI 2022 II O.R.	Grey RAL7035	7,1+0,2/-0 mm	OK.	-
1210180036	N	4	2	1 mm2	PVCH05	Black	6,5±0,2 mm	OK.	-
1210180082	N	4	3	1 mm2	PVCH05	Black	6,9±0,2 mm	OK.	-
1210180117	R	4	3	1 mm2	TPR HAL. FREE	Black	7,1±0,2 mm	OK.	-
1210180085	N	5	3	1,5 mm2	PVCH05	Black	8,3+0,2/-0 mm	OK.	-
1210180313	I	6	2	0,35 mm2	PVC CEI 2022 II O.R.	Grey RAL7035	4,8±0,2 mm	OK.	-
-	A	7	3	20 AWG	PVC CSA/UL 2661	Yellow	5,6±0,2 mm	OK.	OK.
1210180149	I	9	4	0,75 mm2	PVC CEI 2022 II O.R.	Grey RAL7035	7,3±0,2 mm	OK.	-

TABLE 1 - CABLES TYPE

Code	Cable types	Features	Stranding
N	PVC	Application general purpose cable which has good resistance to water, but usually poor oil resistance.	0,5 mm2 = 15 x 0,20 0,75 mm2 = 21 x 0,20 1 mm2 = 28 x 0,20
I	CEI	Approved to IEC 332-2A, flame retardant and self extinguishing. Limited resistant to mineral oils.	0,5 mm2 = 28 x 0,15 0,75 mm2 = 42 x 0,15 1 mm2 = 32 x 0,20
P	PUR	Offer good resistance to oil and chemicals. Can swell when constantly immersed in water.	0,5 mm2 = 28 x 0,15 0,75 mm2 = 42 x 0,15 1 mm2 = 32 x 0,20
A	PVC CSA-UL	Approved to CSA-UL 2661, application general purpose cable which has good resistance to water, but usually poor oil resistance.	20 AWG = 32 x 0,15 18 AWG = 52 x 0,15
B	PUR CSA-UL	Approved to CSA-UL 20668, very good resistance to oil and chemicals.	20 AWG = 32 x 0,15 18 AWG = 52 x 0,15

DRAWING UPDATE  
EC NO: IPG2013-1505  
DRWN: JMARSZALEK 2013/03/28  
CHKD:  
APPR: MIWASIECZKO 2013/04/02

QUALITY SYMBOLS  
▽=0  
◁=0

GENERAL TOLERANCES (UNLESS SPECIFIED)

	mm	INCH
4 PLACES	± ---	± ---
3 PLACES	± ---	± ---
2 PLACES	± ---	± ---
1 PLACE	± ---	± ---
0 PLACE	± ---	± ---

ANGULAR ± --- °  
DRAFT WHERE APPLICABLE MUST REMAIN WITHIN DIMENSIONS

DIMENSION STYLE  
MM ONLY

DRAWN BY	DATE
JMARSZALEK	2013/01/16
CHECKED BY	DATE
MSZWAJKOWSKI	2013/01/16
APPROVED BY	DATE
MIWASIECZKO	2013/02/12

MATERIAL NO.  
SEE SHEET 2&3

SCALE  
1:1

DESIGN UNITS  
METRIC

FIRST ANGLE PROJECTION

TITLE  
E65XXXXXXXX1XXXX  
DUAL DIN FORM A

**molex**

DOCUMENT NO.  
SD-121055-001

SHEET NO.  
3 OF 4

THIS DRAWING CONTAINS INFORMATION THAT IS PROPRIETARY TO MOLEX INCORPORATED AND SHOULD NOT BE USED WITHOUT WRITTEN PERMISSION

