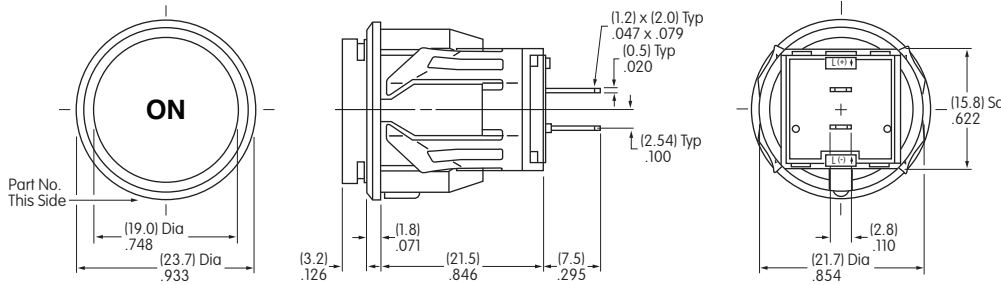


# Standard Size Indicator with Legend

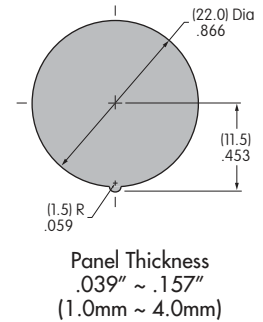
# LB Indicator

## LB02VA001

### Snap-in Mount



### PANEL CUTOUT



### BASE INDICATOR

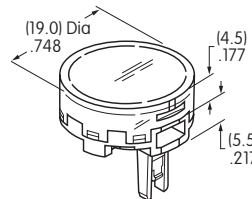
Part Number  
LB02KW01

### ROUND CAP

AT4164JB  
Round Cap

Clear Lens  
White Insert

Material: Polycarbonate  
Finish: Glossy



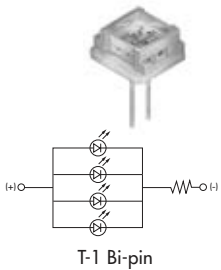
### LEGEND SPECIFICATIONS

Legend	ON
Type Style	Helvetica Bold
Type Size	10 Point
Legend Color	Black
Print Method	Laser Etch on Inside of Lens

Legend shown is illustrative only.  
Actual art may vary.

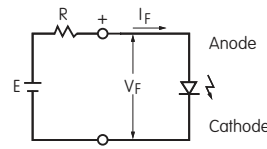
### ELECTRICAL SPECIFICATIONS FOR LED

Bright LED  
AT627F05



LED is 5-volt 4-element with resistor		
Color	Green	
Maximum Forward Current	$I_{FM}$	—
Typical Forward Current	$I_F$	52mA
Forward Voltage	$V_F$	5V
Maximum Reverse Voltage	$V_{RM}$	4V
Current Reduction Rate Above 25°C	$\Delta I_F$	0.50mA/°C
Ambient Temperature Range		-25°C ~ +50°C

The electrical specifications shown are determined at a basic temperature of 25°C. If the source voltage exceeds the rated voltage, a ballast resistor is required. The following diagram and formula will assist in calculating the value of the ballast resistor.



$$R = \frac{E - V_F}{I_F}$$

Where: R = Resistor Value (Ohms)  
E = Source Voltage (V)  
 $V_F$  = Forward Voltage (V)  
 $I_F$  = Forward Current (A)

## Base Indicator Specifications

### Materials & Finishes

<b>Housing:</b>	Glass fiber reinforced polyamide (UL94V-0)
<b>Snap-in Frame:</b>	Stainless steel
<b>Base:</b>	Liquid crystal polymer (UL94V-0)
<b>Lamp Terminals:</b>	Brass with silver plating

### Environmental Data

<b>Operating Temperature Range:</b>	-25°C through +50°C (-13°F through +122°F) Note: When used with a polyvinyl chloride splash cover, the lowest limit is 0°C (32°F)
<b>Humidity:</b>	90 ~ 95% humidity for 96 hours @ 40°C (104°F)
<b>Vibration:</b>	10 ~ 55Hz with peak-to-peak amplitude of 1.5mm traversing the frequency range & returning in 1 minute; 3 right angled directions for 2 hours
<b>Shock:</b>	50G (490m/s <sup>2</sup> ) acceleration (tested in 6 right angled directions, with 5 shocks in each direction)
<b>RoHS Compliant:</b>	

### Installation

<b>Cap Installation Force:</b>	3.92N maximum downward force on cap
<b>Quick Connect Force:</b>	52.95N maximum downward force on connector
<b>Soldering Time &amp; Temperature:</b>	Manual Soldering: 390°C for 4 seconds, 2 cycles

### Standards & Certifications

Flammability Standards: UL94V-0 housing & base