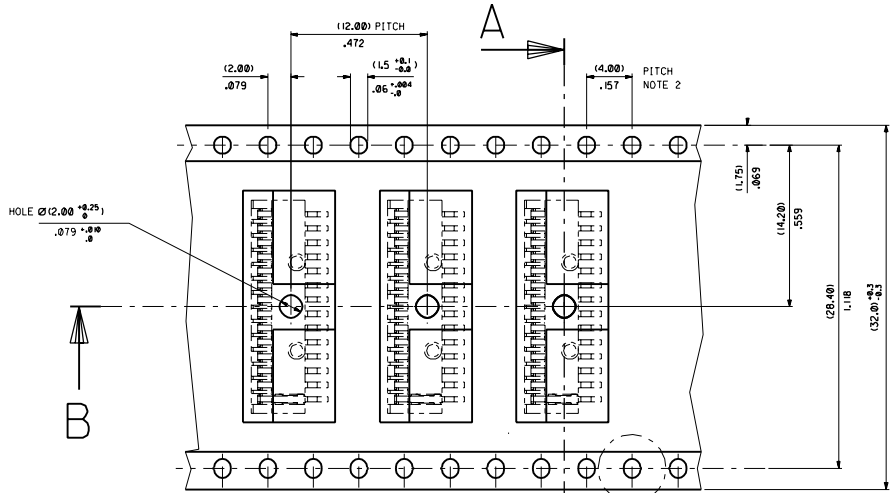
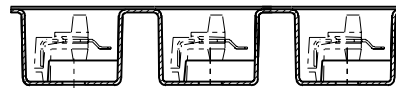


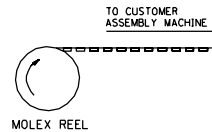
A - A



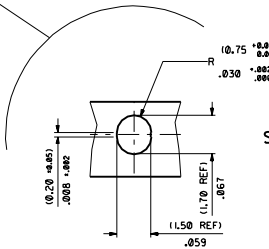
DIRECTION OF UNREELING →



B - B

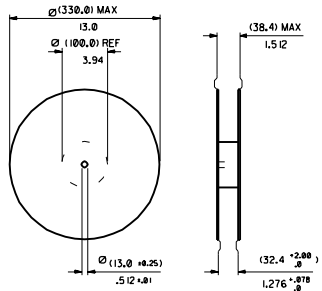


MOLEX REEL



Scale 10:1

REFERENCE ONLY



REEL DIMENSIONS

Do Not Scale

10000 PIECES PER REEL

1 FOUR REELS / CARDBOARD BOX (PCTN-38)

1 32000 PIECES PER CARDBOARD BOX



NOTES:

- 1) MATERIAL :
CARRIER TAPE : VOLUME CONDUCTIVE POLYCARBONATE , (0.34) .013 REF THICK , BLACK
COVER TAPE : COLD SEAL POLYESTER , (0.06) .002 REF THICK , TRANSPARENT
- 2) PITCH TOLERANCE OVER ANY 10 PITCHES ± 0.2 .000
- 3) PEEL FORCE OF THE COVER TAPE IS 0.1N TO 1.0N
AT A MAXIMUM PEEL SPEED OF (300) 11.81/min $\pm 10\%$
- 4) PACKAGING SPEC. TBA
- 5) REFERENCE TO IEC 286-3

FOR PREVIOUS DRAWING ISSUES SEE MRL.

VARIOUS DIMS ECONOMIZER 95107-002	DESIGNER DAB	DATE 94/11/15
DESIGN A1	CHECKER DAB	DATE 94/11/15
SCALE 5:1	SCALE	DATE

REVISE ONLY ON CAD SYSTEM		SCALE
DATE 94/11/15	SCALE	DATE
BLISTER PACKAGING FOR 95107-0002		
MOLEX EUROPE		
PART NO 95107-9002	DATE	DATE
95107-9002	94/11/15	94/11/15