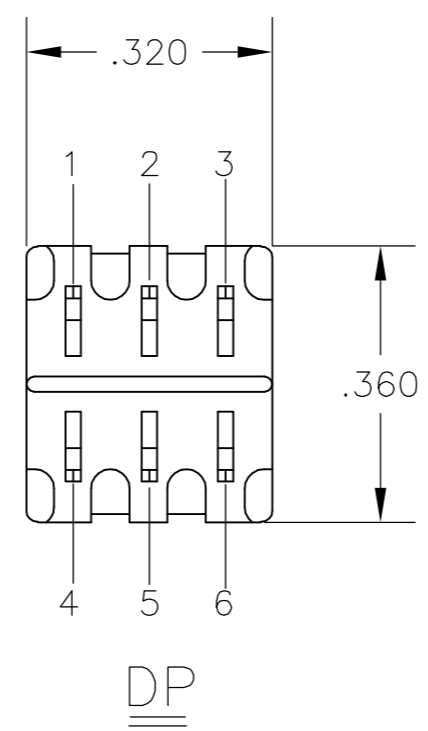
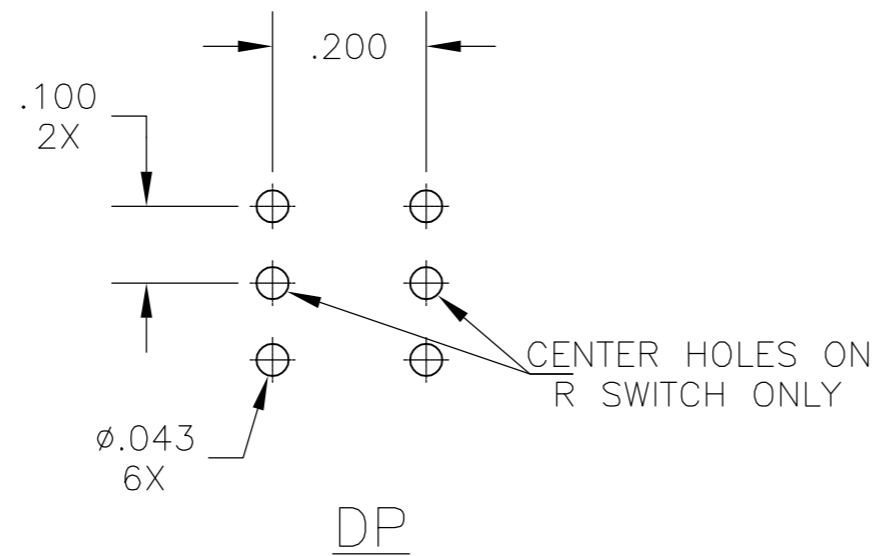
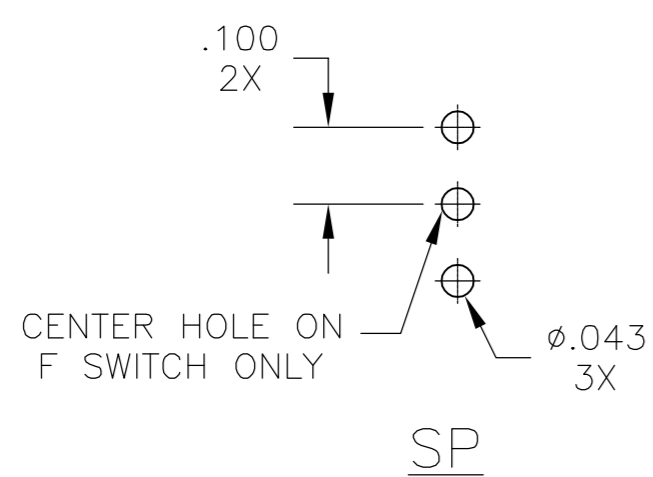
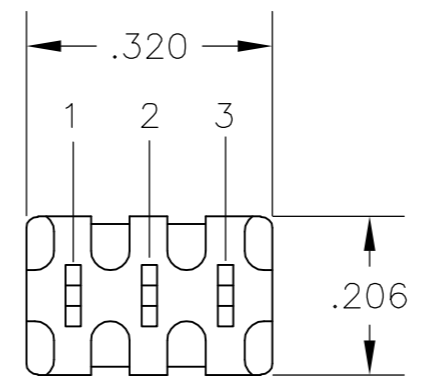
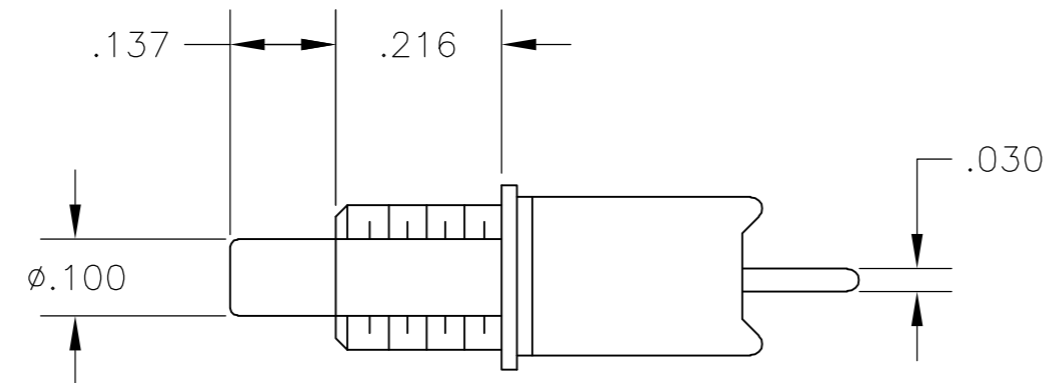
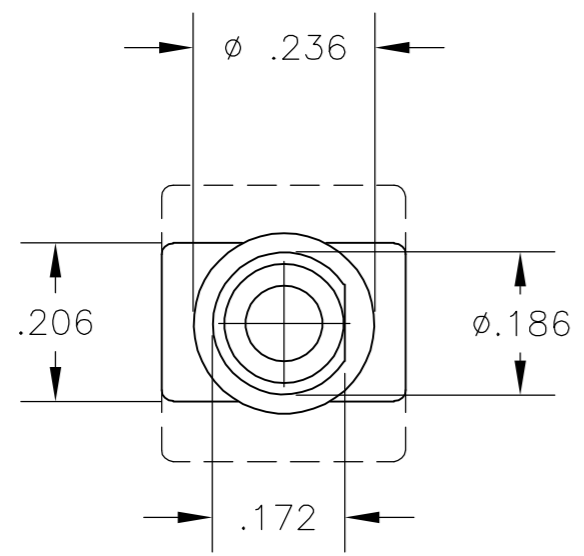
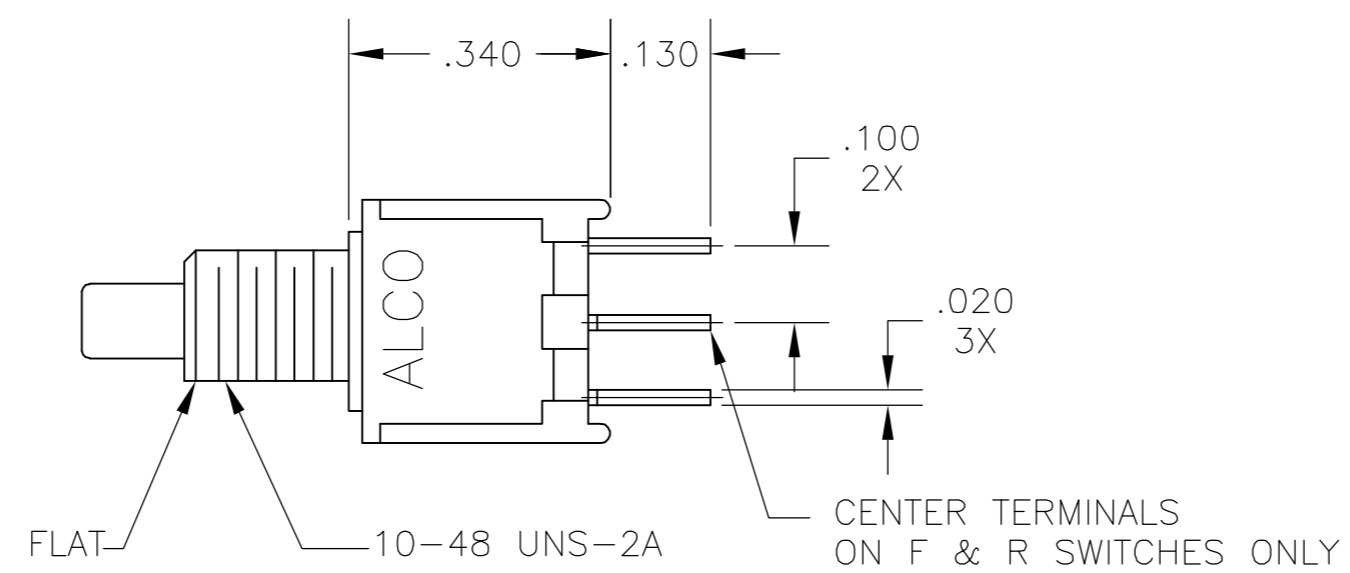


THIS DRAWING IS UNPUBLISHED. RELEASED FOR PUBLICATION  
 © COPYRIGHT BY TYCO ELECTRONICS CORPORATION. ALL RIGHTS RESERVED.

LOC		DIST		REVISIONS			
P	LTR	DESCRIPTION	DATE	DWN	APVD		
B		ECO-06-000585	10AUG06	BSV	MK		



**RECOMMENDED HOLE LAYOUT**  
 TOLERANCE ±.002 UNLESS OTHERWISE NOTED

(*)	ACTUATOR BUTTON COLORS
(0)	BLACK
(2)	RED
(6)	BLUE

**SPECIFICATIONS:**

**MATERIALS:**

CASE: HIGH TEMPERATURE POLYESTER.  
 ACTUATOR BUTTON: POLYAMIDE, COLOR: SEE CHART BELOW.  
 MOVING CONTACT: COPPER ALLOY, GOLD OVER NICKEL PLATE.  
 FIXED CONTACT/TERMINAL: COPPER ALLOY. TIN/LEAD PLATE.  
 TERMINAL SEAL: EPOXY.

**ELECTRICAL:**

CONTACT RATING: 0.4 VA MAX. @ 20 VDC OR PEAK AC.  
 INITIAL CONTACT RESISTANCE: 20 MILLIOHMS MAX.  
 INSULATION RESISTANCE: 1.000 MEGOHMS @ 500 VDC MIN.  
 DIELECTRIC STRENGTH: 1.000 VOLTS RMS @ SEA LEVEL.  
 LIFE EXPECTANCY: 100.000 CYCLES.

**MECHANICAL:**

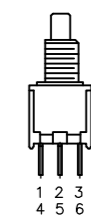
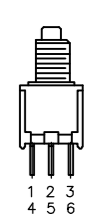
ACTUATION FORCE: 50 TO 400 GRAMS.  
 ACTUATION TRAVEL: .030".

**ENVIROMENTAL:**

OPERATING TEMPERATURE: -22°F TO +149°F (-30°C TO +65°C)  
 STORAGE TEMPERATURE: -22°F TO +149°F (-30°C TO +65°C)

**NOTES:**

1. INTERPRET DRAWING PER ANSI Y14.5M-1982.
2. MOUNTING HARDWARE SUPPLIED: (1) LOCKWASHER  
(1) HEX NUT.

TERMINALS CONNECTED WITH BUTTON IN POSITIONS SHOWN.		
MODEL NO.		
TPC21RG-PC (*)	2 TO 1 (MOM) 5 TO 4	2 TO 3 (MOM) 5 TO 6
TPC21RG-PC (*)	OFF	1 TO 3 (MOM) 4 TO 6
TPC11FG-PC (*)	2 TO 1	2 TO 3 (MOM)
TPC11CG-PC (*)	OFF	1 TO 3 (MOM)

**NOTE:**  
 DESIGNATION NUMBERS ARE FOR REFERENE ONLY AND DO NOT APPEAR ON THE SWITCHES

AUGAT D/N 40313-SD

THIS DRAWING IS A CONTROLLED DOCUMENT.		DWN S.KIRCORIAN 03OCT96	<b>tyco</b> Tyco Electronics Corporation	
DIMENSIONS: INCHES		CHK -	Harrisburg, Pa 17105-3608	
TOLERANCES UNLESS OTHERWISE SPECIFIED:		APVD -	NAME	
0 PLC ± -		PRODUCT SPEC -	PUSHBUTTON SWITCH	
1 PLC ± -		APPLICATION SPEC -	SP & DP PC	
2 PLC ± -		WEIGHT -	(TPC11-PC & TPC21-PC)	
3 PLC ± .010		SCALE 4:1	SIZE A2	RESTRICTED TO
4 PLC ± -		SHEET 1 OF 1	CAGE CODE 00779	REV B
ANGLES ± -		DRAWING NO. C=1437572-3		
FINISH		CUSTOMER DRAWING		
SEE SPECIFICATIONS				