

DO NOT SCALE FROM THIS PRINT

PATENT NUMBER
8,727,815

SEAFP-XX-XX.X-X-XX-XX

STYLE	"F"	BODY CALLOUT	CONTACT
-05.0	.197 [5.00]	SEAFP-XX-05.0-XX-X	C-365-05.0-X
*-06.0	.237 [6.02]	SEAFP-XX-06.0-XX-X	C-365-06.0-X
*-07.0	.276 [7.01]	SEAFP-XX-07.0-XX-X	C-365-07.0-X

(* = NOT TOOLED)

No OF POS	"A"	"B"	"C"	"D"	"E"
-10	.729 [18.52]	.450 [11.43]	.670 [17.02]	.710 [18.03]	.450 [11.43]
-20	1.229 [31.22]	.950 [24.13]	1.170 [29.72]	1.210 [30.73]	.950 [24.13]
-30	1.729 [43.92]	1.450 [36.83]	1.670 [42.42]	1.710 [43.43]	1.450 [36.83]
-40	2.229 [56.62]	1.950 [49.53]	2.170 [55.12]	2.210 [56.13]	1.950 [49.53]
-50	2.729 [69.32]	2.450 [62.23]	2.670 [67.82]	2.710 [68.83]	2.450 [62.23]

No OF POSITIONS
-10, -20, -30, -40, -50
(PER ROW)

LEAD STYLE
-05.0: .197[5.00] HEIGHT
* -06.0: .237[6.02] HEIGHT
* -07.0: .276[7.01] HEIGHT

OPTION
* -LP: LATCH POST OPTION
(SEE FIG 5, SHT 3)
(ONLY AVAILABLE WITH -05.0
LEAD STYLE, 6, 8 & 8 ROWS)
* -PP: POLARIZATION PIN
(SEE FIG 6, SHT 3)
(ONLY AVAILABLE WITH -05.0
LEAD STYLE, 6, 8 & 10 ROWS)
-TR: TAPE & REEL

PLATING SPECIFICATION
-L: 10 u" SELECTIVE GOLD IN CONTACT
AREA, MATTE TIN ON TAIL
(USE C-365-XX.X-L)
-S: 30 u" SELECTIVE GOLD IN CONTACT
AREA, MATTE TIN ON TAIL
(USE C-365-XX.X-S)

ROW
-04: 4 ROWS (SEE FIG 4, SHT 2)
-06: 6 ROWS (SEE FIG 3, SHT 2)
* -08: 8 ROWS (SEE FIG 1)
* -10: 10 ROWS (SEE FIG 2, SHT 2)

* = NOT TOOLED

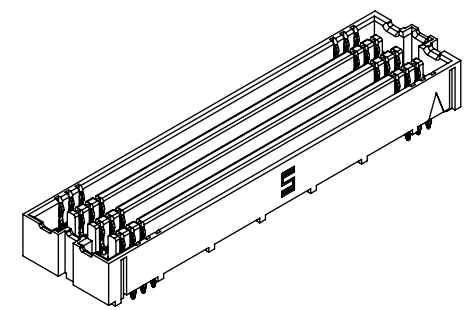
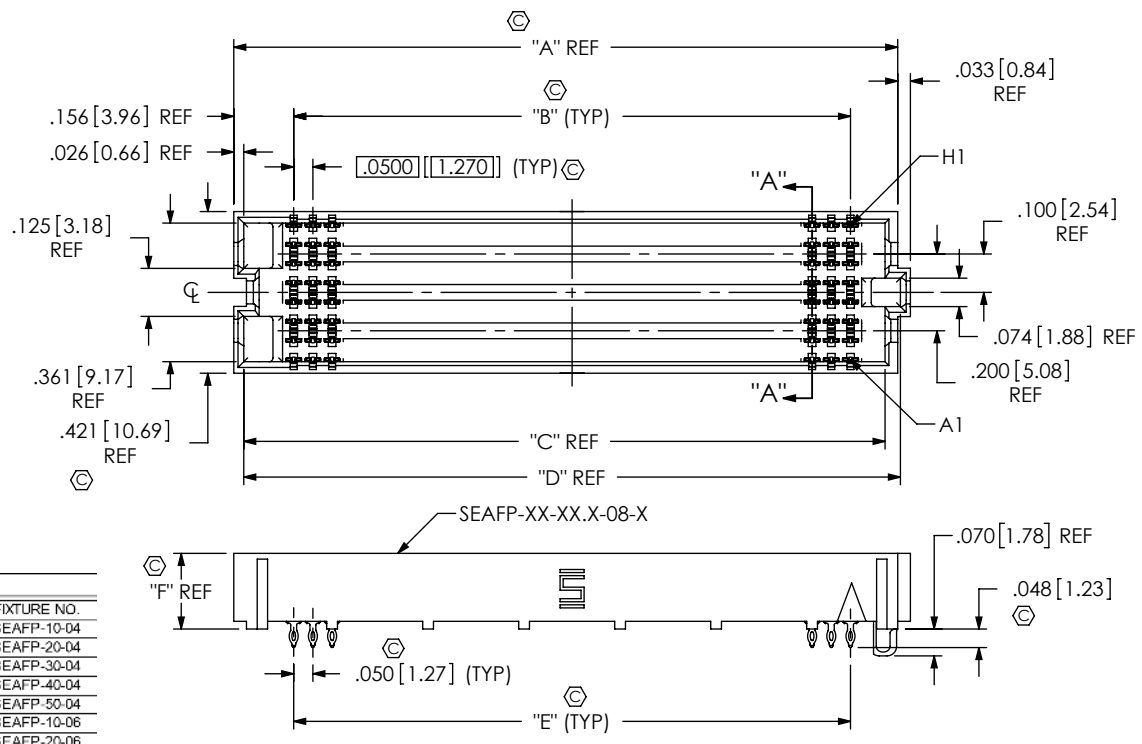
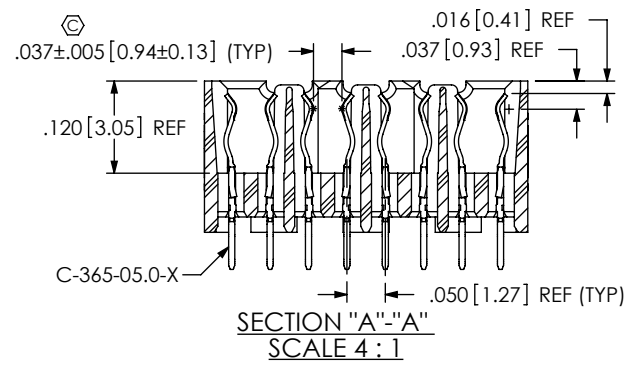


FIG 1
(SEAFP-30-05.0-X-08 SHOWN)
(ALL CONTACTS NOT SHOWN FOR CLARITY)
(NOT TOOLED)



ROW	NO OF POS	CAT FIXTURE NO.
-04	-10	CAT-SEAFP-10-04
	-20	CAT-SEAFP-20-04
	-30	CAT-SEAFP-30-04
	-40	CAT-SEAFP-40-04
	-50	CAT-SEAFP-50-04
-06	-10	CAT-SEAFP-10-06
	-20	CAT-SEAFP-20-06
	-30	CAT-SEAFP-30-06
	-40	CAT-SEAFP-40-06
	-50	CAT-SEAFP-50-06

- NOTES:
- ⊙ REPRESENTS A CRITICAL DIMENSION.
 - CONTACT SAMTEC FOR CONNECTOR PRESS FIT INSTRUCTIONS AND REQUIRED FIXTURES.
 - CONNECTOR BODY COLOR TO BE NATURAL (BEIGE).
 - MINIMUM PUSHOUT FORCE 0.5 LBS[2.22N] FOR CONTACTS AND GUIDE POSTS.
 - SCREWS [SAMTEC P/N MS-256-250-P-6L] FOR -LP OPTION WILL BE BULK PACKAGED AND SHIPPED WITH CONNECTORS, MAXIMUM PCB THICKNESS IS .138[3.51] FOR SUPPLIED SCREWS.
 - APPLICATION TOOLING P/N CAT-SEAFP-XX-XX REQUIRED FOR TERMINATION, CONTACT IPG FOR FURTHER DETAILS (SEE TABLE 5).
 - ASSEMBLIES TO BE PACKAGED IN TRAYS.
 - SAMTEC RECOMMENDS THIS CONNECTOR NOT BE EXPOSED TO REFLOW TEMPERATURES. CONTACT SAMTEC INTERCONNECT PROCESSING GROUP FOR MORE INFORMATION.

<p>UNLESS OTHERWISE SPECIFIED, DIMENSIONS ARE IN INCHES. TOLERANCES ARE:</p> <p>DECIMALS ANGLES</p> <p>.XX: ±.01 [0.3] 2°</p> <p>.XXX: ±.005 [0.13]</p> <p>.XXXX: ±.0020 [0.051]</p>	<p>PROPRIETARY NOTE</p> <p>THIS DOCUMENT CONTAINS INFORMATION CONFIDENTIAL AND PROPRIETARY TO SAMTEC, INC. AND SHALL NOT BE REPRODUCED OR TRANSFERRED TO OTHER DOCUMENTS OR DISCLOSED TO OTHERS OR USED FOR ANY PURPOSE OTHER THAN THAT WHICH IT WAS OBTAINED WITHOUT THE EXPRESSED WRITTEN CONSENT OF SAMTEC, INC.</p>	<p>520 PARK EAST BLVD, NEW ALBANY, IN 47150 PHONE: 812-944-6733 FAX: 812-948-5047 e-Mail: info@SAMTEC.com code 55322</p>

PATENT NUMBER
8,727,815

FIG 2
(SAME AS FIG 1, EXCEPT AS SHOWN)
(SEAFP-30-05.0-XX-10 SHOWN)
(ALL CONTACTS NOT SHOWN FOR CLARITY)
(NOT TOOLED)

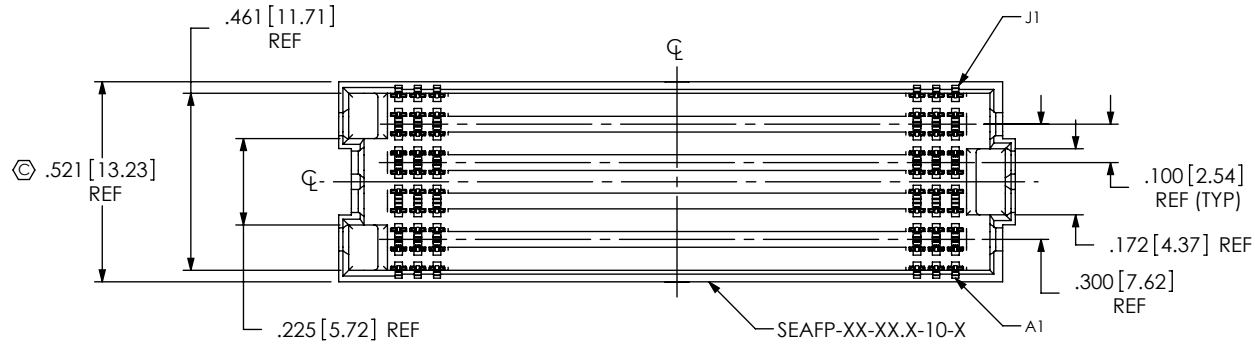


FIG 3
(SAME AS FIG 1, EXCEPT AS SHOWN)
(SEAFP-30-05.0-XX-06 SHOWN)
(ALL CONTACTS NOT SHOWN FOR CLARITY)

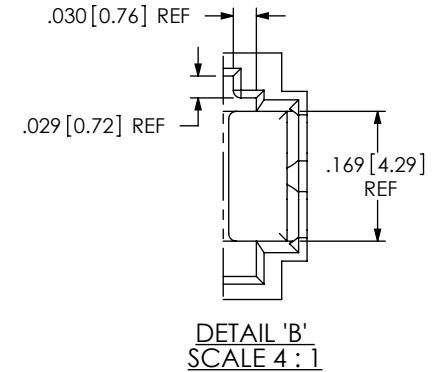
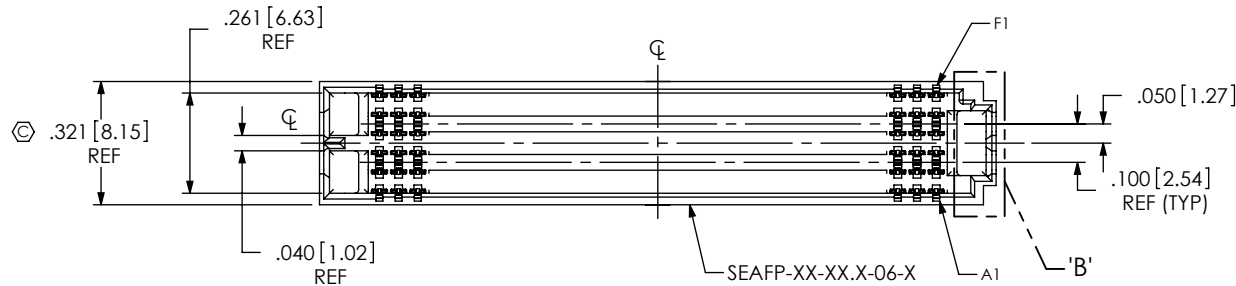
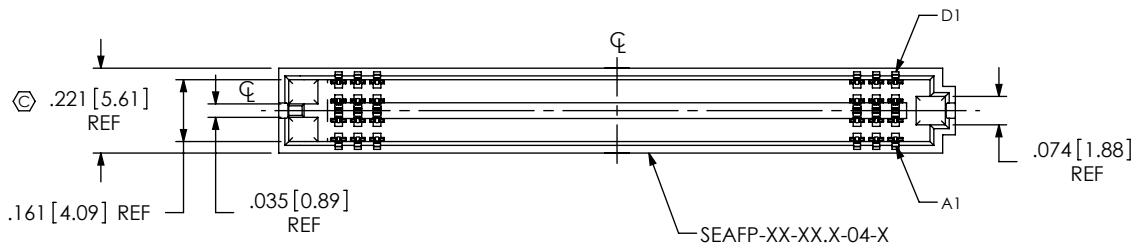


FIG 4
(SAME AS FIG 1, EXCEPT AS SHOWN)
(SEAFP-30-05.0-XX-04 SHOWN)
(ALL CONTACTS NOT SHOWN FOR CLARITY)



PROPRIETARY NOTE
THIS DOCUMENT CONTAINS INFORMATION
CONFIDENTIAL AND PROPRIETARY TO
SAMTEC, INC. AND SHALL NOT BE REPRODUCED
OR TRANSFERRED TO OTHER DOCUMENTS OR
DISCLOSED TO OTHERS OR USED FOR ANY
PURPOSE OTHER THAN THAT WHICH IT WAS
OBTAINED WITHOUT THE EXPRESSED WRITTEN
CONSENT OF SAMTEC, INC.

DO NOT SCALE DRAWING

SHEET SCALE: 2:1

samtec

520 PARK EAST BLVD, NEW ALBANY, IN 47150
PHONE: 812-944-6733 FAX: 812-948-5047
e-Mail: info@SAMTEC.com code 55322

DESCRIPTION:
SOCKET ARRAY ASSEMBLY WITH COMPLIANT TAILS

DWG. NO.
SEAFP-XX-XX.X-X-XX-XX

BY: DUKES Z 12/30/2010 SHEET 2 OF 3

PATENT NUMBER
8,727,815

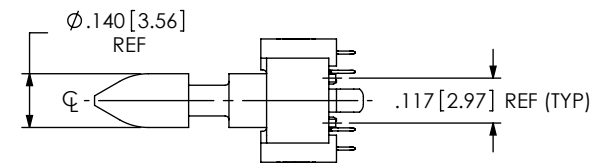
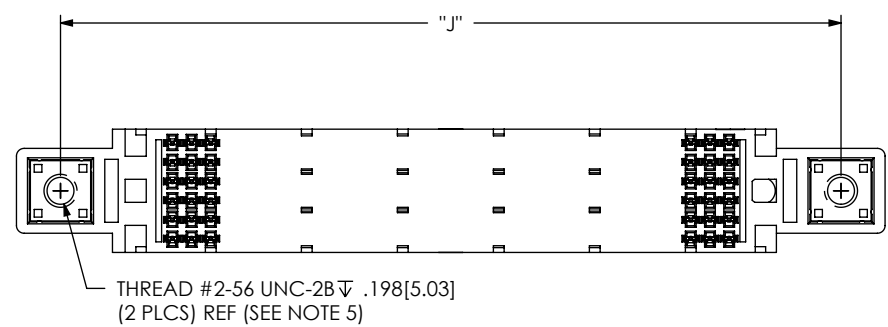
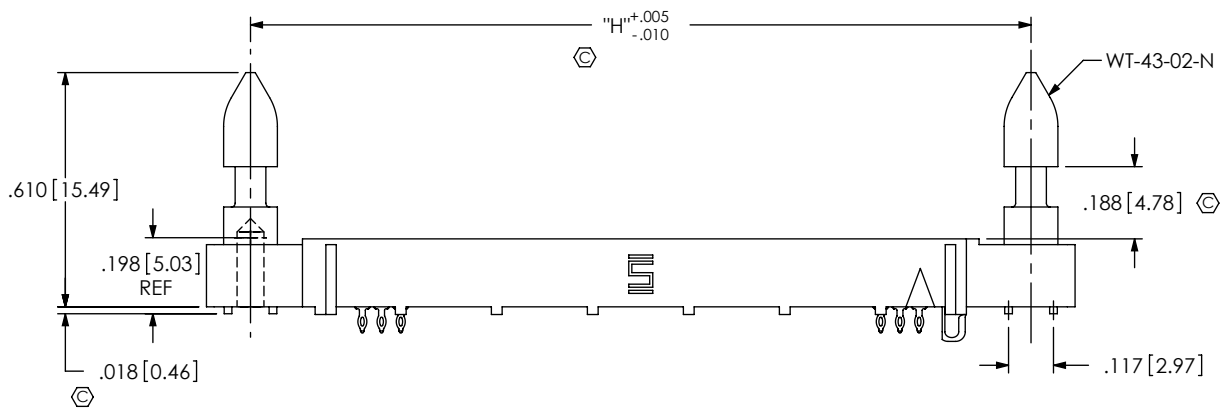
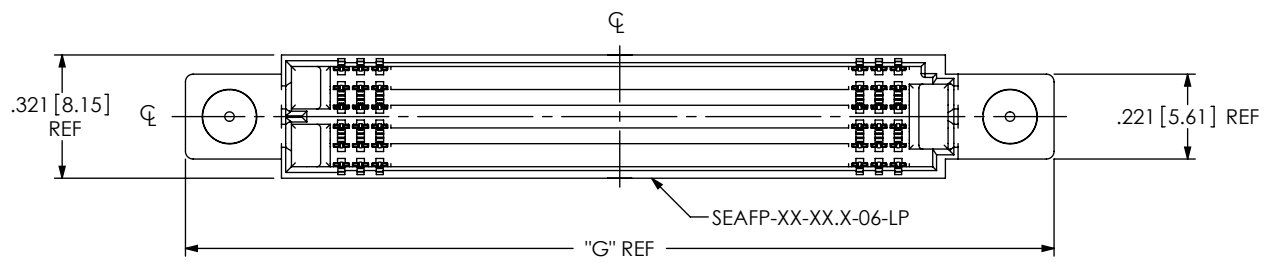
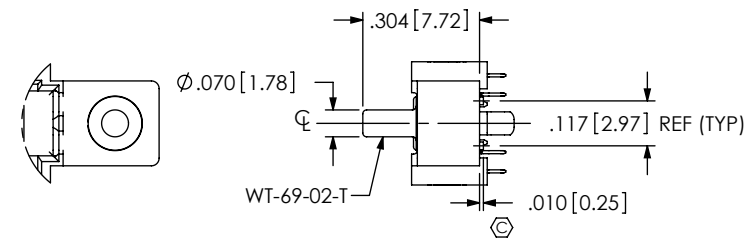


FIG 5
-LP OPTION
(SEAF-30-05.0-XX-06-LP SHOWN)
(ALL CONTACTS NOT SHOWN FOR CLARITY)
(SAME AS FIG 3 EXCEPT AS SHOWN)
(-LP OPTION REQUIRED FOR SEAC MATE ONLY)
(NOT TOOLED)

TABLE 4

No OF POS	"G"	"H"	"J"
-10	1.262 [32.05]	1.033 [26.24]	1.03 [26.2]
-20	1.762 [44.75]	1.533 [38.94]	1.53 [38.9]
-30	2.262 [57.45]	2.033 [51.64]	2.03 [51.6]
-40	2.762 [70.15]	2.533 [64.34]	2.53 [64.3]
-50	3.262 [82.85]	3.033 [77.04]	3.03 [77.0]

FIG 6
-PP OPTION
(SEAF-30-05.0-XX-06-PP SHOWN)
(ALL CONTACTS, NOT SHOWN FOR CLARITY)
(SAME AS FIG 5 EXCEPT AS SHOWN)
(-PP OPTION VALID FOR SEAR MATE ONLY)
(NOT TOOLED)



PROPRIETARY NOTE
THIS DOCUMENT CONTAINS INFORMATION
CONFIDENTIAL AND PROPRIETARY TO
SAMTEC, INC. AND SHALL NOT BE REPRODUCED
OR TRANSFERRED TO OTHER DOCUMENTS OR
DISCLOSED TO OTHERS OR USED FOR ANY
PURPOSE OTHER THAN THAT WHICH IT WAS
OBTAINED WITHOUT THE EXPRESSED WRITTEN
CONSENT OF SAMTEC, INC.

samtec
520 PARK EAST BLVD, NEW ALBANY, IN 47150
PHONE: 812-944-6733 FAX: 812-948-5047
e-Mail: info@SAMTEC.com code 55322

DO NOT SCALE DRAWING
SHEET SCALE: 2:1

DESCRIPTION:
SOCKET ARRAY ASSEMBLY WITH COMPLIANT TAILS
DWG. NO.
SEAFP-XX-XX.X-X-XX-XX
BY: DUKES Z 12/30/2010 SHEET 3 OF 3