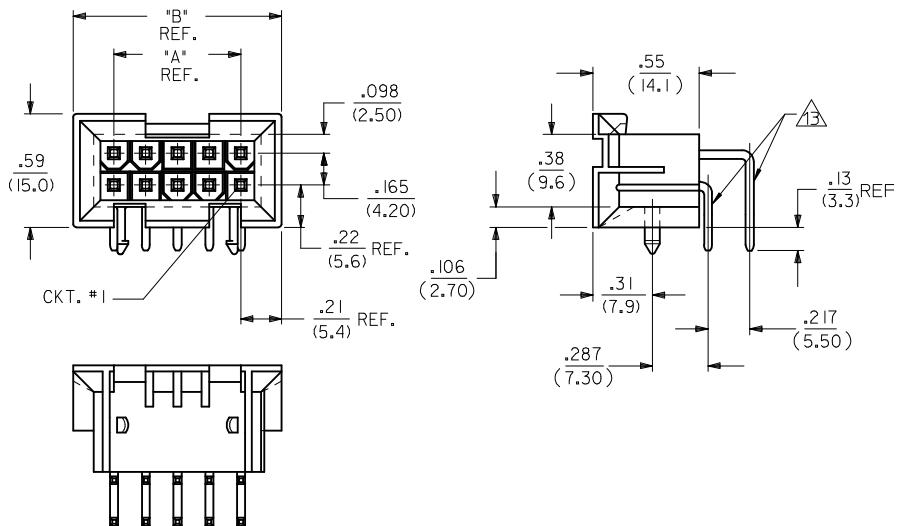
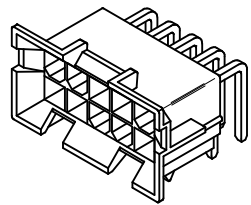


	CIRCUIT SIZE	DIM. "A"	DIM. "B"
J	6	.331 (8.40)	.76 (19.2)
	8	.496 (12.60)	.92 (23.4)
I	10	.661 (16.80)	1.09 (27.6)
	12	.827 (21.00)	1.25 (31.8)
	14	.992 (25.20)	1.42 (36.0)
H	16	1.157 (29.40)	1.58 (40.2)
	18	1.323 (33.60)	1.75 (44.4)
	20	1.488 (37.80)	1.91 (48.6)
G	22	1.654 (42.00)	2.08 (52.8)
	24	1.819 (46.20)	2.24 (57.0)

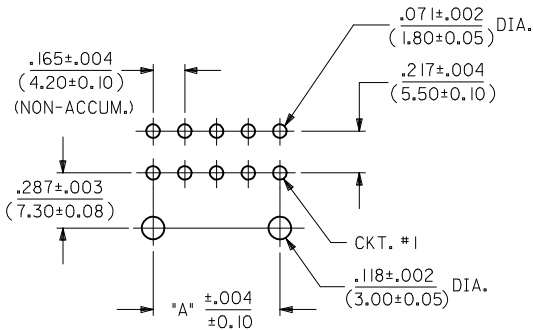


NOTES:

- MATERIAL: HOUSING: "A" = NYLON 6/6, U.L. 94V-2, COLOR: NATURAL.
"B" = NYLON 6/6, U.L. 94V-0, COLOR: NATURAL.
TERMINAL: BRASS ALLOY
- TERMINAL PLATING:
1 = .000100/(.00254) MIN. MATTE TIN OVER
.000050/(.00127) MIN. NICKEL OVERALL.
5 = .000030/(.00076) MIN. SELECT GOLD AND
.000100/(.00254) MIN. SELECT MATTE TIN OVER
.000050/(.00127) MIN. NICKEL OVERALL.
- PRODUCT SPECIFICATION: PS-5556-002
- PACKAGING SPECIFICATION: PK-42404-002.
- 4-24 CKT. PARTS MATE WITH MINI-FIT JR. RECEPTACLES #5557, #42385, #44516 AND #42474. 2 CKT. PART MATES WITH #42385, #44516 AND #42474 ONLY.
- PART ALLOWS FOR UP TO .100/(2.54) MISALIGNMENT WITH MATING RECEPTACLE IN ANY DIRECTION. SEE MATING CONNECTOR DRAWINGS FOR SPECIFIC ALLOWANCES.
- CONNECTOR ASSEMBLIES ARE NOT TO BE MATED OR UNMATED WHILE CIRCUITS ARE LIVE.
- A MAXIMUM TOLERANCE OF .050/(1.27) ALLOWS FOR 2 POINTS OF ELECTRICAL CONTACT. A MAXIMUM TOLERANCE OF .020/(.51) ALLOWS FOR 4 POINTS OF CONTACT.
- DISCOLORATION IN THE BANDOLIER CARRIER AREA OF THE PIN IS INHERENT TO THE PLATING PROCESS AND IS DUE TO THE MASKING EFFECT OF THE CARRIER. THIS DISCOLORATION IS IN A NON-FUNCTIONAL AREA OF THE PIN AND WILL NOT AFFECT THE PERFORMANCE OF THE HEADER ASSEMBLY.
- PART IS NOT DESIGNED FOR CURRENT SHARING.
- PART IS NOT INTENDED TO PROVIDE ANY ALIGNMENT OF CUSTOMER COMPONENTS OR MODULES, SUCH AS POWER SUPPLIES AND CHASSIS.
- PARTS CONFORM TO CLASS 'B' REQUIREMENTS OF COSMETIC SPECIFICATION PS-45499-002.*
- FORMING MARKS ARE ACCEPTABLE.
- CORNER CORE-OUTS ARE OPTIONAL AND MAY OR MAY NOT BE PRESENT
- TEXT ON PART IS FOR REFERENCE ONLY. TEXT AND TEXT LOCATION MAY VARY DEPENDING ON PART NUMBER AND/OR TOOL.

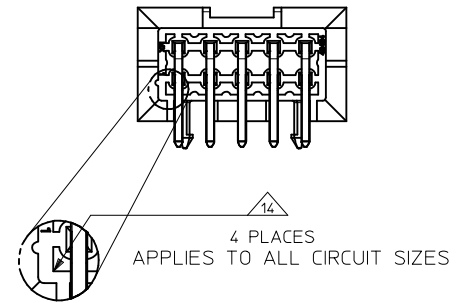
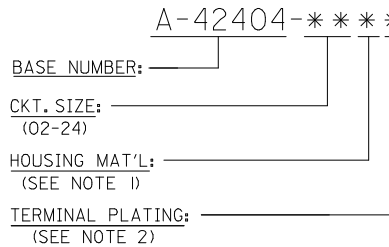


A-42404-****



RECOMMENDED HOLE LAYOUT FOR
.070/(1.78) MAX. THICK P.C. BOARD
VIEWED FROM COMPONENT SIDE

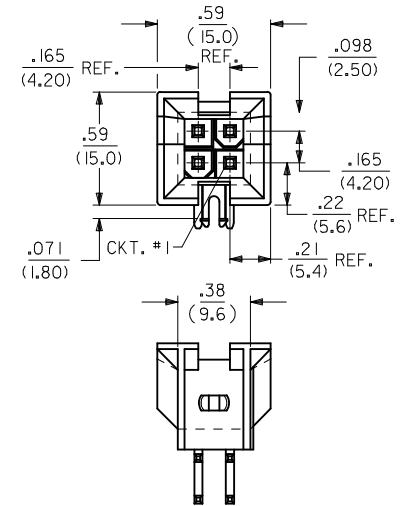
LEGEND:



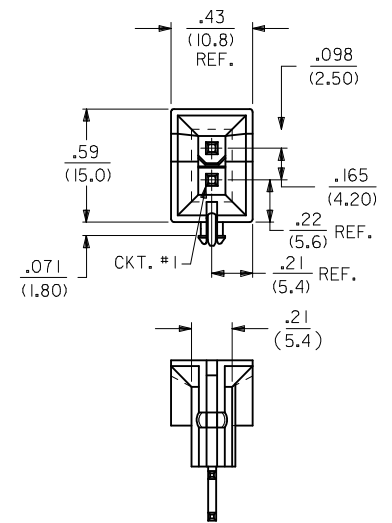
CT.	CT. SIZE	CT. PARTS	CT. PARTS	CT. PARTS	CT. PARTS	CT. PARTS
C	--**B2, --**B4	42474-***21, 5556-PBGS*P	94V-0	PHOS. BRZ.	GOLD	94V-2
	--**B1, --**B3	42474-***21, 5556-PBS*P	94V-0	TIN		
					--**A1, --**A3	42474-***11, 5556-PBS*P
	--**B2, --**B4	42474-***21, 5556-GS*P	94V-0	GOLD		
					--**A2, --**A4	42474-***11, 5556-GS*P
--**B1, --**B3	42474-***21, 5556-S*P	94V-0	TIN			
				--**A1, --**A3	42474-***11, 5556-S*P	94V-2
B	--**B2, --**B4	A-42385-***D2	94V-0			
				--**A2, --**A4	A-42385-***C2	94V-0
	--**B1, --**B3	A-42385-***D1	94V-0			
				--**A1, --**A3	A-42385-***C1	94V-2
	--**B2, --**B4	A-42385-***B2	94V-0			
				--**A2, --**A4	A-42385-***A2	94V-2
--**B1, --**B3	A-42385-***B1	94V-0	TIN			
				--**A1, --**A3	A-42385-***A1	94V-2

R.A. HEADER	MATING CONNECTOR	HSG. MAT'L.	TERM. MAT'L.	PLATING
A-42404				MATING CONNECTOR FEATURES

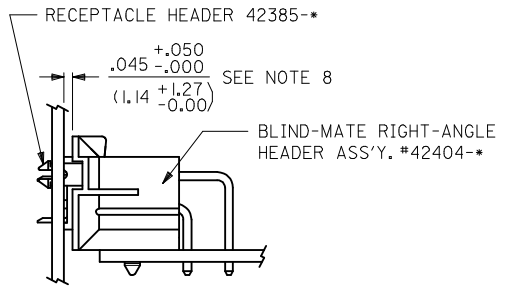
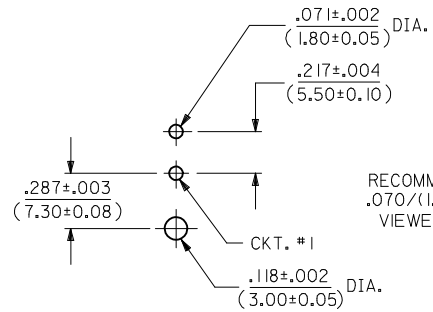
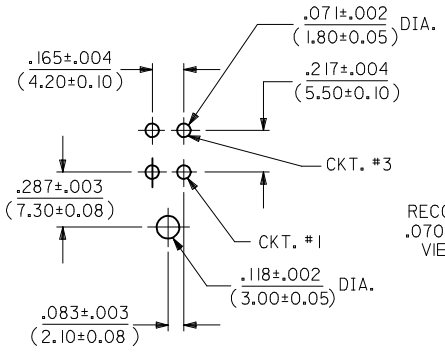
ADD BACK VIEW EC NO: UCP2017-0438 DRAWNCSLAFR 2016/08/23 CHKD:JBELL 2016/08/23 APPR:FSMITH 2016/09/121	DESCRIPTION	QUALITY SYMBOLS	GENERAL TOLERANCES (UNLESS SPECIFIED)	DIMENSION STYLE		SCALE	DESIGN UNITS	THIRD ANGLE PROJECTION
				IN/MM		2:1	METRIC	
				DRAWN BY	DATE	TITLE		
			4 PLACES ± --- ± ---	RWK	DATE	MINI-FIT JR. 2-24 CKT RIGHT ANGLE HEADER ASSY (BLIND MATE)		
			3 PLACES ± --- ± .10	CHECKED BY	DATE	MOLEX INCORPORATED		
			2 PLACES ± 0.25 ± .015	RJF	DATE	SHEET NO.		
			1 PLACE ± 0.38 ± ---	APPROVED BY	DATE	1 OF 3		
			ANGULAR ± 1/2°	FSMITH	2011/11/01	SDA-42404-****		
			DRAFT WHERE APPLICABLE MUST REMAIN WITHIN DIMENSIONS	MATERIAL NO.	DOCUMENT NO.	THIS DRAWING CONTAINS INFORMATION THAT IS PROPRIETARY TO MOLEX INCORPORATED AND SHOULD NOT BE USED WITHOUT WRITTEN PERMISSION		
				SEE SHEET 3				



A-42404-04**



A-42404-02**



SEE RECEPTACLE DRAWINGS FOR ADDITIONAL MATING CONFIGURATIONS

SEE SHEET 1 EC NO: UCP2017-0436 DRAWN:CLAFTER 2016/08/23 CHKD:JBELL 2016/08/23 APPR:FSMITH 2016/09/21	QUALITY SYMBOLS ▽=0 ▽=0 ▽=0	GENERAL TOLERANCES (UNLESS SPECIFIED) <table border="1"> <tr> <th></th> <th>mm</th> <th>INCH</th> </tr> <tr> <td>4 PLACES ±</td> <td>---</td> <td>---</td> </tr> <tr> <td>3 PLACES ±</td> <td>---</td> <td>±.010</td> </tr> <tr> <td>2 PLACES ±</td> <td>0.25</td> <td>±.015</td> </tr> <tr> <td>1 PLACE ±</td> <td>0.38</td> <td>---</td> </tr> </table>		mm	INCH	4 PLACES ±	---	---	3 PLACES ±	---	±.010	2 PLACES ±	0.25	±.015	1 PLACE ±	0.38	---	DIMENSION STYLE IN/MM DRAWN BY: RWK DATE: 2/7/89 CHECKED BY: RJF DATE: 2/7/89 APPROVED BY: FSMITH DATE: 2011/11/01	SCALE: 2:1 DESIGN UNITS: METRIC THIRD ANGLE PROJECTION	TITLE: MINI-FIT JR. 2-24 CKT RIGHT ANGLE HEADER ASSY (BLIND MATE)
		mm	INCH																	
	4 PLACES ±	---	---																	
	3 PLACES ±	---	±.010																	
2 PLACES ±	0.25	±.015																		
1 PLACE ±	0.38	---																		
MATERIAL NO. SEE SHEET 3	DOCUMENT NO. SDA-42404-****	SHEET NO. 2 OF 3	MOLEX INCORPORATED																	
DRAFT WHERE APPLICABLE MUST REMAIN WITHIN DIMENSIONS						THIS DRAWING CONTAINS INFORMATION THAT IS PROPRIETARY TO MOLEX INCORPORATED AND SHOULD NOT BE USED WITHOUT WRITTEN PERMISSION														

