

| P/N* | REV. | DESCRIPTION | NAME | DATE |
|-----------------------------------|------|---|------|----------|
| CODING: BLACK P/N*: 0982731001 | A | -PRELIMINARY ISSUE FOR GENERAL MARKET | EBA | 04/11/08 |
| | B | -ADDED ERGONOMICS EVOLUTION FOR UNMATING SLIDE | FKO | 07/10/23 |
| | C | -NEW PIN-HOLE | DDO | 09/10/19 |
| | D | -ALL MARKINGS UPDATED. - TEXTS IN FRENCH REMOVED. | GD | 12/02/28 |
| | | -NOTES UPDATED. | | |
| CODING: GREEN P/N*: 0982731002 | | | | |
| CODING: BLUE P/N*: 0982731003 | | | | |
| CODING: WHITE P/N*: 0982731004 | | | | |
| CODING: BROWN P/N*: 0982731005 | | | | |
| CODING: GREY P/N*: 0982731006 | | | | |

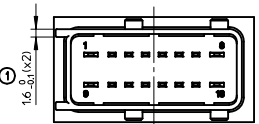
| MODIFICATIONS | | | |
|---------------|---|------|----------|
| REV. | DESCRIPTION | NAME | DATE |
| A | -PRELIMINARY ISSUE FOR GENERAL MARKET | EBA | 04/11/08 |
| B | -ADDED ERGONOMICS EVOLUTION FOR UNMATING SLIDE | FKO | 07/10/23 |
| C | -NEW PIN-HOLE | DDO | 09/10/19 |
| D | -ALL MARKINGS UPDATED. - TEXTS IN FRENCH REMOVED. | GD | 12/02/28 |
| | -NOTES UPDATED. | | |

- NOTES:
- REPRESENTED CONNECTOR: BLACK CODING.
 - FEMALE CONNECTOR WILL MATE WITH MALE CONN. P/N*098276100X.
 - APPLICATION SPECIFICATION: AS-98273-001
 - PACKAGING SPECIFICATION: PK-98273-001
 - BOW ALLOWED: 0,4MM
 - TERMINALS TO BE USED ARE SPECIFIED ON THE APPL. SPEC.

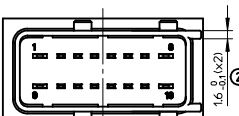
| MOLEX P/N* | ITEM | DESCRIPTION | MATERIAL | COLOUR |
|------------|------|-------------------------|------------|-----------|
| 0982750001 | 3 | LOCKING SLIDER | >PBT-GF15< | RED |
| 0982740001 | 2 | SECONDARY LOCKING (TPA) | >PBT-GF20< | YELLOW |
| 098273000X | 1 | FEMALE HOUSING | >PBT-GF20< | SEE CHART |

| | | | | | | | | |
|--|---------------------|---|------------|-----------------|------------|------------------------------------|------------------------|--|
| REVISED EC NO: G2012-0137 DRWNG:DESBRUIERES 2012/02/28 CHKD:Y LOUAS 2012/02/29 APPR:CBOLCHAN 2012/03/09 | QUALITY SYMBOLS | GENERAL TOLERANCES (UNLESS SPECIFIED) | | DIMENSION STYLE | SCALE | DESIGN UNITS | FIRST ANGLE PROJECTION | |
| | | | | MM ONLY | 2:1 | METRIC | | |
| | | | | DRAWN BY | DATE | TITLE | | |
| | | | | DATE | 2004/11/08 | 16W HYB. - FEM. CONN. 1.5 - 2.8 | | |
| | | CHECKED BY | DATE | APPROVED BY | | | | |
| | | DATE | 2004/11/08 | DATE | | | | |
| | | APPROVED BY | DATE | DATE | | | | |
| | | DATE | 2004/11/08 | DATE | | | | |
| | | MATERIAL NO. | | DOCUMENT NO. | | SHEET NO. | | |
| | | SEE CHART | | SD-98273-001 | | 1 OF 1 | | |
| | | THIS DRAWING CONTAINS INFORMATION THAT IS PROPRIETARY TO MOLEX INCORPORATED AND SHOULD NOT BE USED WITHOUT WRITTEN PERMISSION | | | | | | |

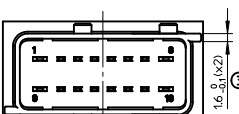
CODINGS SCALE 2:1



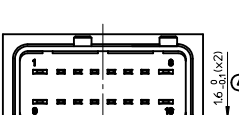
COLOR : BLACK



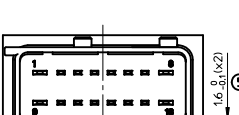
COLOR : GREEN



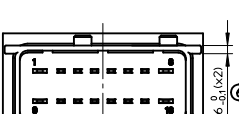
COLOR : BLUE



COLOR : WHITE

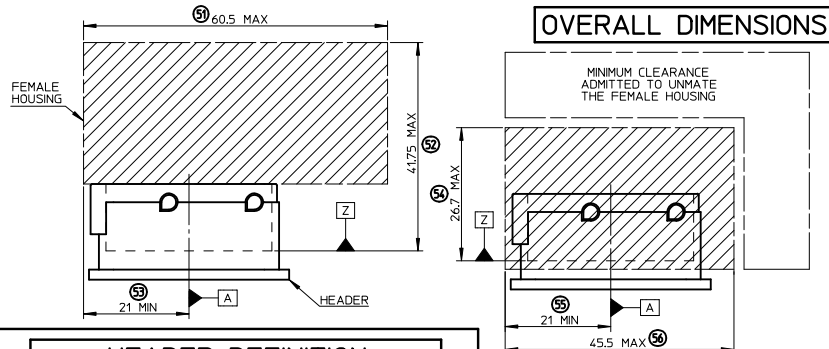


COLOR : BROWN

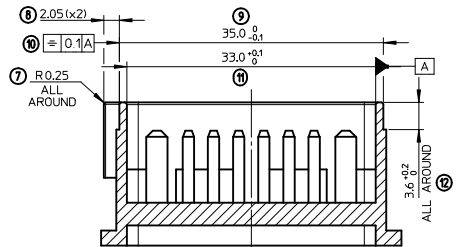


COLOR : GREY

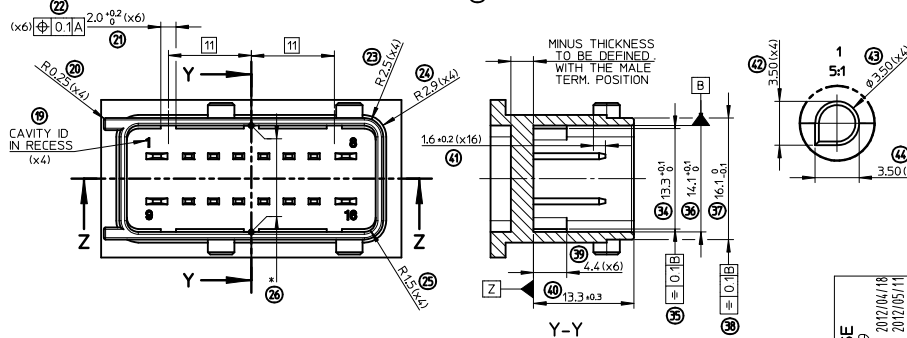
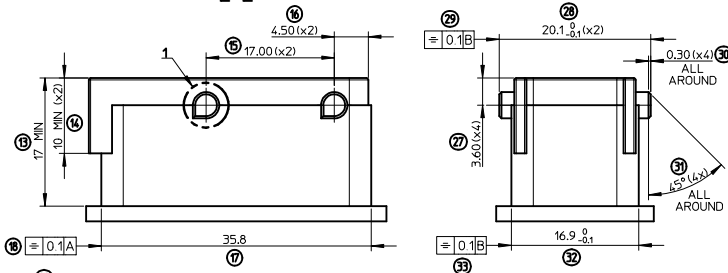
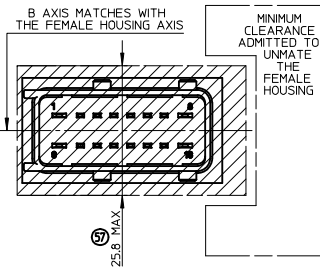
OVERALL DIMENSIONS



**HEADER DEFINITION
BLACK CODING REPRESENTED**



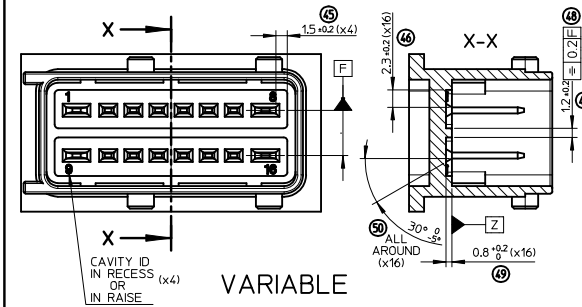
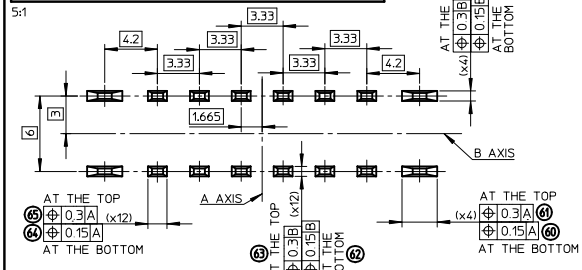
Z-Z



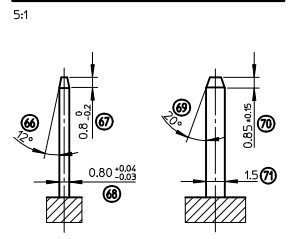
INSPECTION BALLOON NUMBER LOG

PER DRAWING REVISION: A
 LAST BALLOON NUMBER USED: 78
 ADDED BALLOON NUMBERS: NONE
 REMOVED BALLOON NUMBERS: NONE

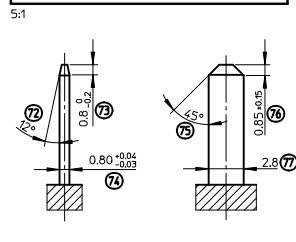
MALE TERMINALS POSITION



1.5 MALE TERMINAL DEFINITION



2.8 MALE TERMINAL DEFINITION



NOTES

- 1 - MALE TERMINALS :
 - RESISTANCE : 100N MIN IN MALE TERM. AXIS
 - MATERIAL : COPPER, COPPER ALLOY OR BRASS
 - FINISHES : TIN PLATED 2µm MIN
- 2 - HEADER :
 - RADI WITHOUT DIM : R=0.3 MM
 - E MIN : MINIMUM MATERIAL THICKNESS RECOMMENDED FOR SPECIFIED MATERIAL
 - (78) - MATERIAL : PBT-GF20 (RECOMMENDED)
 - WARPING : 0.4 MM MAX ACCEPTED ON "x" (0.2 MM ON EACH SIDE)
- 3 - MATES WITH : MOLEX CONNECTORS 98273-100X

| | | | | | | | | |
|---|--------------------------------|---|--|---|--|---|--------------|---|
| FIRST RELEASE EC NO: G2012-0959 DRAWN: PBOSQUAIN 2012/04/18 CHECKED: AHERBELIN 2012/05/11 APPROVED: PLESSIS 2012/05/25 | QUALITY SYMBOLS ✓ ✓ ✓ | GENERAL TOLERANCES (UNLESS SPECIFIED) | | DIMENSION STYLE | | SCALE | DESIGN UNITS | FIRST ANGLE PROJECTION 16W INTERFACE HYB TERM (FOR FEMALE HOUSING) molex DOCUMENT NO. SD-98273-002 SHEET NO. 1 OF 1 |
| | | | | MM ONLY | | 3:1 | METRIC | |
| | | 4 PLACES ± --- ± --- 3 PLACES ± --- ± --- 2 PLACES ± 0.05 ± --- 1 PLACE ± 0.1 ± --- 0 PLACE ± 0.1 ± --- | | DRAWN BY DATE PBOSQUAIN 2012/04/18 CHECKED BY DATE AHERBELIN 2012/05/11 APPROVED BY DATE OPLESSIS 2012/05/25 | | MATERIAL NO. N/A | | |
| | | ANGULAR ± 2 ° DRAFT WHERE APPLICABLE MUST REMAIN WITHIN DIMENSIONS | | SIZE A1 | | THIS DRAWING CONTAINS INFORMATION THAT IS PROPRIETARY TO MOLEX INCORPORATED AND SHOULD NOT BE USED WITHOUT WRITTEN PERMISSION | | |