

DO NOT SCALE FROM THIS PRINT

DESIGNED & DIMENSIONED IN INCHES[MILLIMETERS]

PRF01-J-C-EE-085A-4D

SERIES
-01: SMA

GENDER
-J: JACK

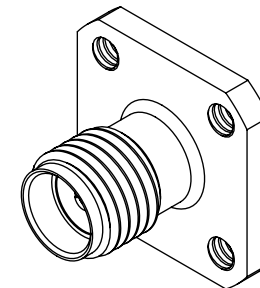
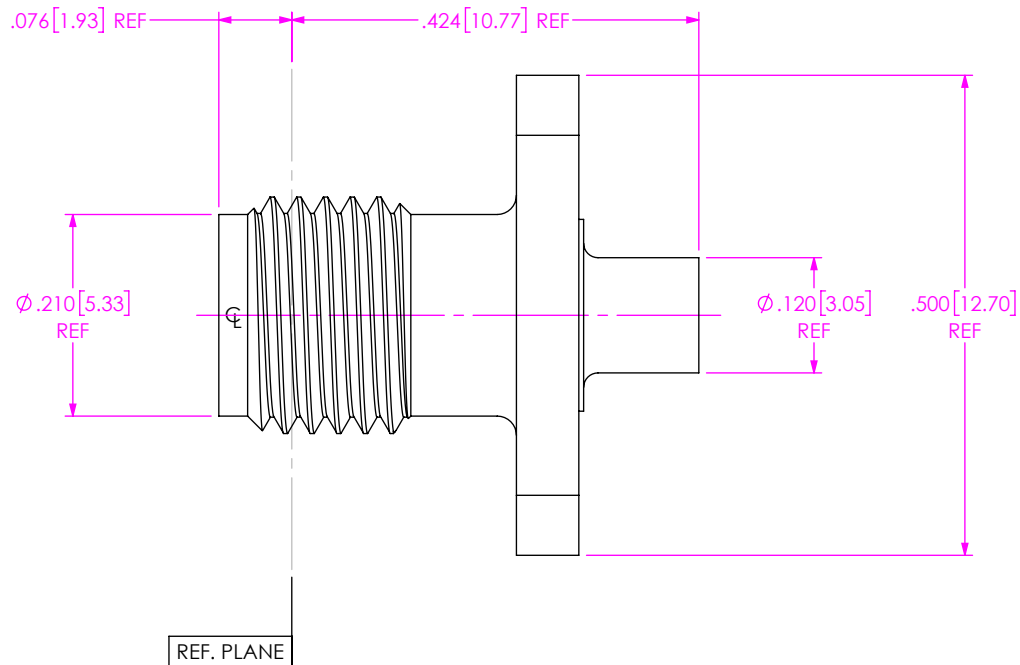
TYPE
-C: CABLE

FINISH
-EE: 50µ" EXTRA HEAVY GOLD CENTER CONTACT, 50µ" EXTRA HEAVY GOLD OUTER CONTACT

TERMINATION
-D: DIRECT SOLDER


ORIENTATION
-4: 4 HOLE FLANGE

CABLE TYPE
-085A: .085" SEMI-RIGID



NOTES:

- MATERIAL:
BODY: STAINLESS STEEL.
SOCKET & OUTER CONTACT: BERYLLIUM COPPER.
INSULATOR: PTFE.
- FINISH:
BODY: PASSIVATED.
SOCKET & OUTER CONTACT: GOLD OVER NICKEL PLATE,
50 µIN MIN GOLD OVER 50 µIN MIN NICKEL.
- PCI P/N: 3186.

<p>UNLESS OTHERWISE SPECIFIED, DIMENSIONS ARE IN INCHES. TOLERANCES ARE: DECIMALS ANGLES .XX: ±.01 [0.3] 1° .XXX: ±.005 [0.13] .XXXX: ±.0005 [0.013]</p>	<p>PROPRIETARY NOTE THIS DOCUMENT CONTAINS CONFIDENTIAL AND PROPRIETARY INFORMATION AND ALL DESIGN, MANUFACTURING, REPRODUCTION, USE, PATENT RIGHTS AND SALES RIGHTS ARE EXPRESSLY RESERVED BY SAMTEC, INC. THIS DOCUMENT SHALL NOT BE DISCLOSED, IN WHOLE OR PART, TO ANY UNAUTHORIZED PERSON OR ENTITY NOR REPRODUCED, TRANSFERRED OR INCORPORATED IN ANY OTHER PROJECT IN ANY MANNER WITHOUT THE EXPRESS WRITTEN CONSENT OF SAMTEC, INC.</p>	 <p>520 PARK EAST BLVD, NEW ALBANY, IN 47150 PHONE: 812-944-6733 FAX: 812-948-5047 e-Mail info@SAMTEC.com code 55322</p>
<p>DO NOT SCALE DRAWING</p>	<p>SHEET SCALE: 3.5:1</p>	<p>DESCRIPTION: SMA JACK, 4 HOLE FLANGE, DIRECT SOLDER FOR .085" LOW-LOSS, SEMI-RIGID CABLE</p> <p>DWG. NO. PRF01-J-C-EE-085A-4D</p> <p>BY: SAMUEL C 08/04/2020 SHEET 1 OF 1</p>