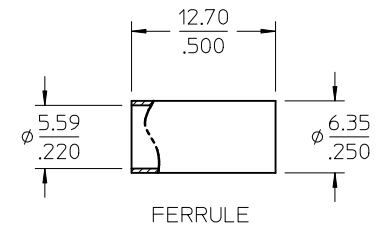
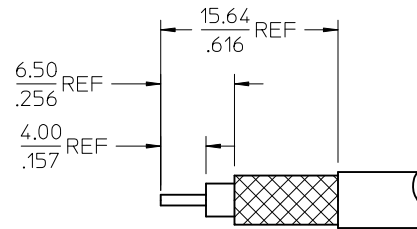
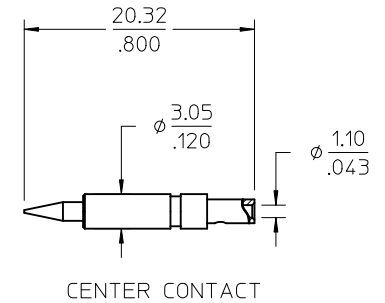
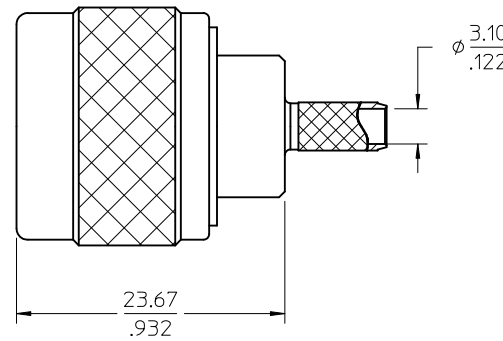
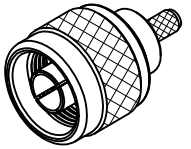
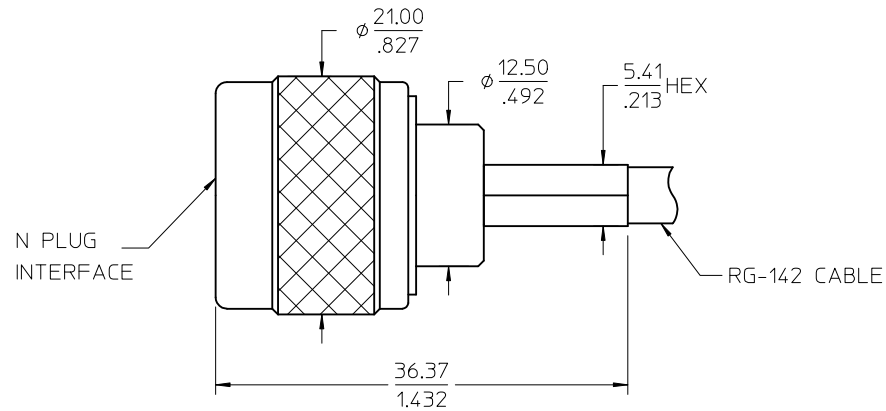
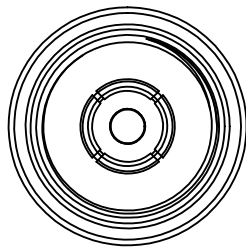


MATERIALS AND FINISHES

BODY, COUPLING NUT, FERRULE BRASS
PLATED NICKEL

CENTER CONTACT BRASS
PLATED GOLD

INSULATOR TEFLON



73276-1340	73258-5059, ONE PER BAG
73258-5059	BULKPACK
PART NO.	PACKAGING

CHG: DELETE AS-73597-0020 DELETE ES-73599-0000 DELETE ELECTRICAL SPECIFICATIONS	EC NO: URF2011-0247 DRAWN: WIENER 2010/10/25 CHKD: SSS 2010/10/25 APPR: WIENER 2010/10/27	DESCRIPTION
REV	A3	

QUALITY SYMBOLS	GENERAL TOLERANCES (UNLESS SPECIFIED)
▽=0	mm INCH
▽=0	4 PLACES ± --- ± ---
	3 PLACES ± --- ± ---
	2 PLACES ± --- ± ---
	1 PLACE ± --- ± ---
	ANGULAR ± 2 °
	DRAFT WHERE APPLICABLE MUST REMAIN WITHIN DIMENSIONS

DIMENSION STYLE MM/IN	
DRAWN BY	DATE
CHECKED BY	DATE
APPROVED BY	DATE
MATERIAL NO.	
SIZE	SEE TABLE

SCALE	DESIGN UNITS	THIRD ANGLE PROJECTION
METRIC		
TITLE		
N PLUG, STRAIGHT 50 OHM RG142 CABLE, CRIMP/CRIMP 50 OHMS, N-PC		
MOLEX INCORPORATED		SHEET NO.
SD-73258-5059		1 OF 1
THIS DRAWING CONTAINS INFORMATION THAT IS PROPRIETARY TO MOLEX INCORPORATED AND SHOULD NOT BE USED WITHOUT WRITTEN PERMISSION		