

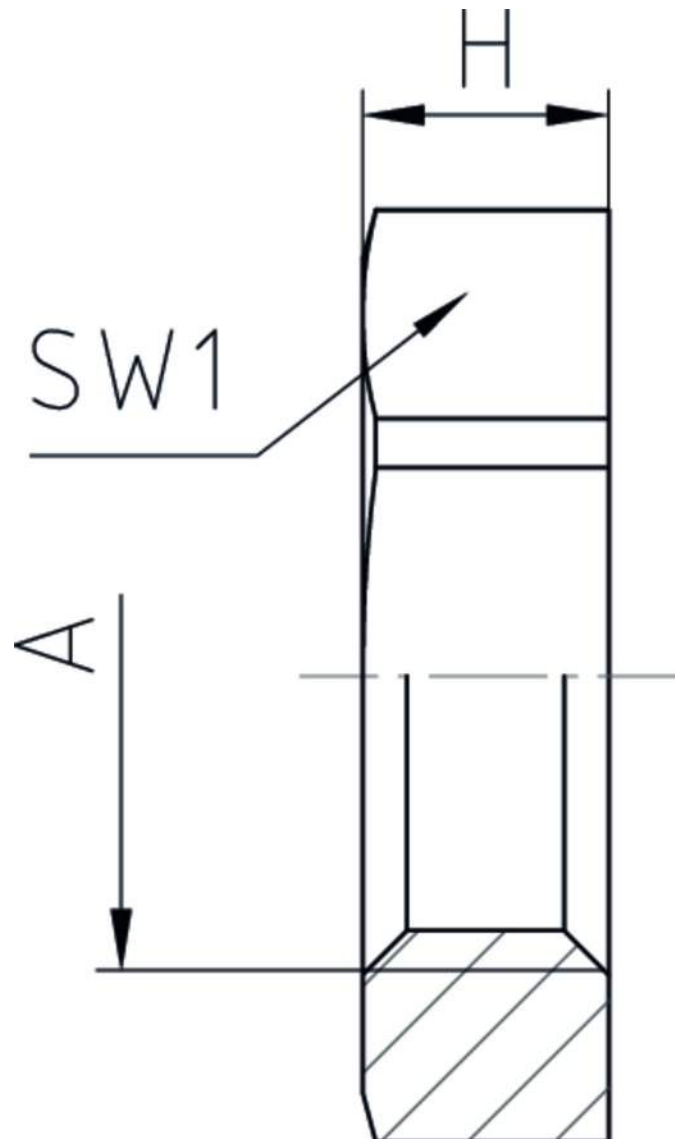
Hexagonal locknut

50.2xx PA/FLzzzz

Hexagonal locknut	Polyamide PA6 V-0
Connecting thread	metric, as per EN 60423

Properties


	<ul style="list-style-type: none">• for secure tightening of cable glands and accessories• for superior claims on firing protection• Polyamide material fulfills UL 94 V-0 and EN 45545-2, R22:HL3 / R23: HL3
Temperature range	-40 °C +100 °C



Features




RAL 9005

A	SW1	H	 VPE	Part No.
M12x1,5	17	5	100	50.212 PA/FLSW
M16x1,5	22	5	100	50.216 PA/FLSW
M20x1,5	27	6	100	50.220 PA/FLSW
M25x1,5	32	6	100	50.225 PA/FLSW
M32x1,5	41	7	100	50.232 PA/FLSW
M40x1,5	50	7	50	50.240 PA/FLSW
M50x1,5	60	8	50	50.250 PA/FLSW
M63x1,5	75	8	50	50.263 PA/FLSW




RAL 7035

A	SW1	H	 VPE	Part No.
M12x1,5	17	5	100	50.212 PA/FL7035
M16x1,5	22	5	100	50.216 PA/FL7035
M20x1,5	27	6	100	50.220 PA/FL7035
M25x1,5	32	6	100	50.225 PA/FL7035
M32x1,5	41	7	100	50.232 PA/FL7035
M40x1,5	50	7	50	50.240 PA/FL7035
M50x1,5	60	8	50	50.250 PA/FL7035
M63x1,5	75	8	50	50.263 PA/FL7035



RAL 7032

A	SW1	H	 VPE	Part No.
M12x1,5	17	5	100	50.212 PA/FL
M16x1,5	22	5	100	50.216 PA/FL
M20x1,5	27	6	100	50.220 PA/FL
M25x1,5	32	6	100	50.225 PA/FL
M32x1,5	41	7	100	50.232 PA/FL
M40x1,5	50	7	50	50.240 PA/FL
M50x1,5	60	8	50	50.250 PA/FL
M63x1,5	75	8	50	50.263 PA/FL

Comment: All listed parts- are in accordance with EN 45545-2, clause 4.5 "Non-listed products" with - exposed areas ≤ 0.20 m², location interior, R22- exposed areas ≤ 0.20 m², location exterior, R23- have according to EN 45545-2, clause 4.3.2, Rule 1 total, combustible / flammable mass of the products < 100 g for grouped products, location interior < 400 g für grouped products, location exterior.