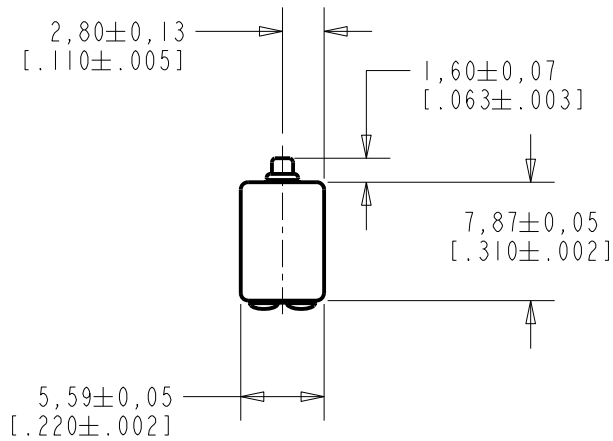


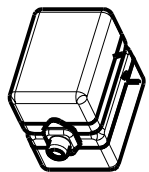
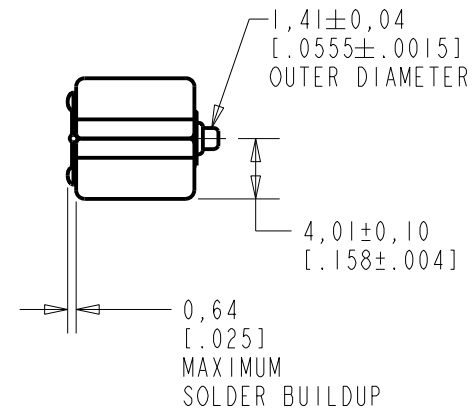
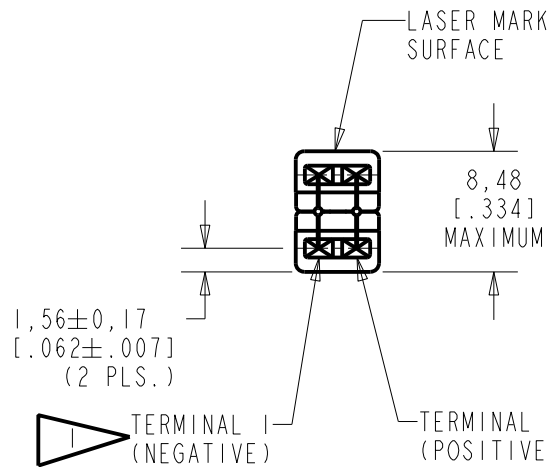
EF-26708-017

SHT 1.1



NOTES:

1 A POSITIVE GOING VOLTAGE AT TERMINAL 2, RELATIVE TO TERMINAL 1, CAUSES A DECREASE IN PRESSURE AT THE SOUND OUTLET.



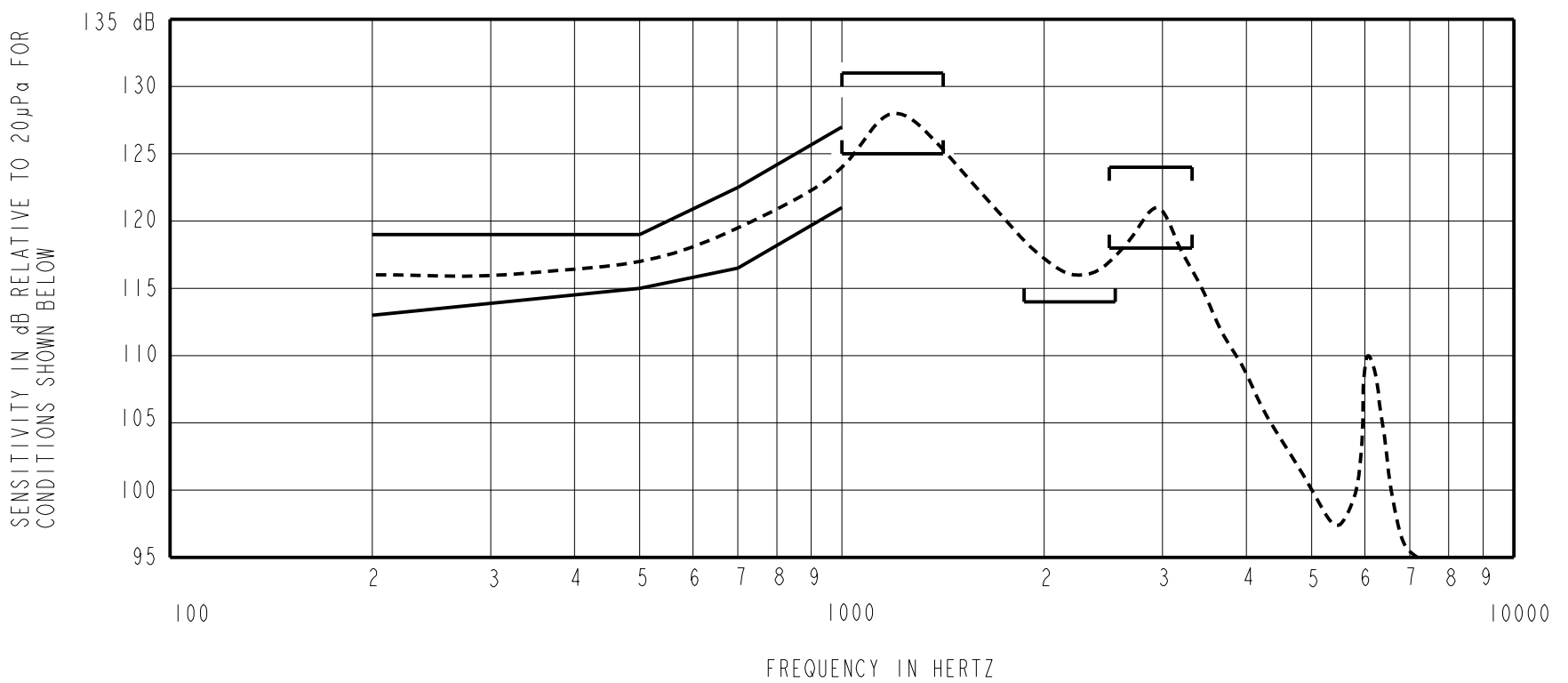
NOMINAL WEIGHT  
1.38 GRAM

DIMENSIONS IN MILLIMETERS [INCHES]

**KNOWLES ELECTRONICS**  
ITASCA, ILLINOIS U.S.A.

Revision	C.O. #	Implementation Date	RELEASE LEVEL	REVISION
C	CI0116295	10-14-14	Active	C
B	CI0115014	7-2-13		
A	CI0103491	12-1-05		

SCALE:	2:1		DR. BY	DATE
DO NOT SCALE DRAWING			MMM	12-1-05
TITLE:	RECEIVER	EF-26708-017	GJP	12-2-05
OUTLINE DRAWING		SHT 1.1	APP. BY	DATE
			GJP	12-2-05



NOTES:

1. MEASUREMENTS MADE USING 10mm[.394"] X 1mm[.039"] ID TUBE CONNECTED TO A SIMULATED ANSI S3.7-1973 TYPE HA-3 COUPLER (IEC 60318-5) INTO 2CC (HA-2 COUPLER)

2. SENSITIVITY

FREQUENCY	MIN.	MAX.
200	113.0	119.0
500	115.0	119.0
700	116.5	122.5
1000	121.0	127.0
1000-1500	125.0	131.0
1900-2600	114.0	---
2550-3350	118.0	124.0

- 3. RESPONSE, IMPEDANCE, AND DISTORTION MEASUREMENTS MADE USING THE ELECTRICAL TEST CONDITIONS SHOWN BELOW.
- 4. ELECTRICAL SOURCE IMPEDANCE MUST BE GREATER THAN 20 TIMES 1KHz IMPEDANCE FOR TEST CONDITIONS SHOWN BELOW.
- 5. INDIVIDUAL SPECIFICATIONS.

PORT LOCATION	IMPEDANCE OHMS ±15%		DCR @20°C OHMS ±10%	DISTORTION		ELECTRICAL TEST CONDITIONS	
	1KHz	500Hz		MAX. %	FREQ Hz	AC mA RMS	DC mA
12S	175	70	25	9	500	3.34	0.00

6. SUFFIX DESCRIPTION:

- 1) BUZZ TEST  
CONSTANT VOLTAGE DRIVE SET TO 56.6 mV/100 Hz, FREQUENCY BAND IS 3550-6750 Hz, AND THE NOISE LIMIT IS 55 mV.
- 2) TEST GUARD BAND  
APPLY GUARD BANDS FOR RESPONSE AND THD AS SPECIFIED ABOVE.
- 3) VISUAL INSPECTION  
VISUALLY INSPECT UNITS FOR GOOD WORKMANSHIP eg. TERMINAL PADS, SOLDER, SCRATCHES, ETC.

Revision	C.O. #	Implementation Date	RELEASE LEVEL	REVISION
C	C10116295	10-14-14	Active	C
B	C10115014	7-2-13		
A	C10103491	12-1-05		

**KNOWLES ELECTRONICS**  
ITASCA, ILLINOIS U.S.A.

WHEN TEST LIMITS ARE USED TO ESTABLISH INCOMING INSPECTION ACCEPTANCE/REJECTION CRITERIA, CORRELATION OF TEST EQUIPMENT WITH KNOWLES IS ALSO REQUIRED FOR ELIMINATION OF EQUIPMENT AND TEST METHOD VARIATION

TITLE: **RECEIVER**  
PERFORMANCE SPECIFICATION

**EF-26708-017**  
SHT 2.1

DR. BY	DATE
MMM	12-1-05
CK. BY	DATE
GJP	12-2-05
APP. BY	DATE
GJP	12-2-05