



Main

Range of Product	Modicon ABE7
Accessory / separate part designation	Splitter sub-base
Accessory / Separate Part Type	Splitter sub-base
Accessory / separate part category	Connection accessories
Accessory / separate part destination	Connection sub-base
Number of Channels	16
Quantity per Set	Set of 1

Complementary

Channel splitting	2 x 8
Net Weight	0.17 lb(US) (0.075 kg)

Ordering and shipping details



Category	22375 - INTERFACE MODULE(ABA,R,S)
Discount Schedule	CP2
GTIN	3389110544824
Nbr. of units in pkg.	1
Package weight(Lbs)	2.72 oz (77 g)
Returnability	No
Country of origin	LV

Packing Units

Unit Type of Package 1	PCE
Package 1 Height	2.28 in (5.8 cm)
Package 1 width	3.07 in (7.8 cm)
Package 1 Length	2.17 in (5.5 cm)
Unit Type of Package 2	S02
Number of Units in Package 2	30
Package 2 Weight	5.95 lb(US) (2.7 kg)
Package 2 Height	5.91 in (15 cm)
Package 2 width	11.81 in (30 cm)
Package 2 Length	15.75 in (40 cm)

Offer Sustainability

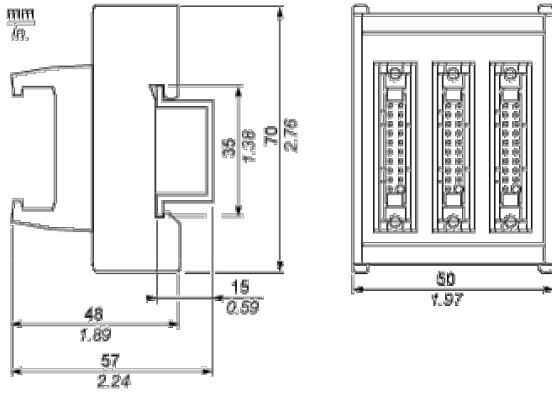
California proposition 65	WARNING: This product can expose you to chemicals including: Lead and lead compounds, which is known to the State of California to cause cancer and birth defects or other reproductive harm. For more information go to www.P65Warnings.ca.gov
REACH Regulation	REACH Declaration
REACH free of SVHC	Yes
EU RoHS Directive	Pro-active compliance (Product out of EU RoHS legal scope) EU RoHS Declaration
Mercury free	Yes

RoHS exemption information	 Yes
China RoHS Regulation	 China RoHS Declaration
WEEE	The product must be disposed on European Union markets following specific waste collection and never end up in rubbish bins.

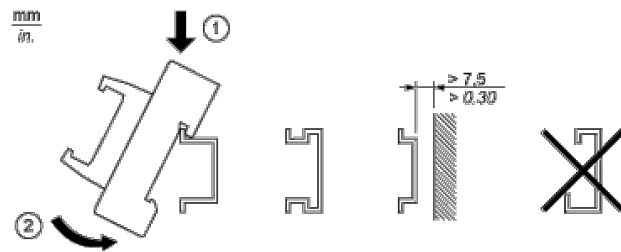
Contractual warranty

Warranty	18 months
----------	-----------

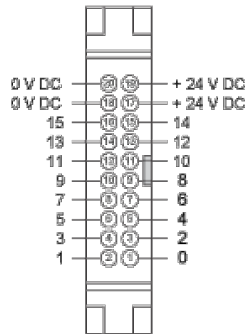
Dimensions



Mounting



HE10 16 Channels



Wiring Diagram

