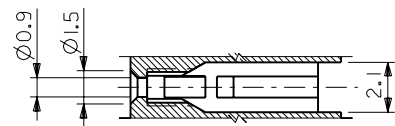
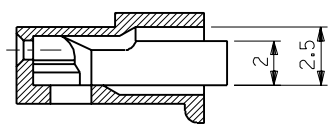
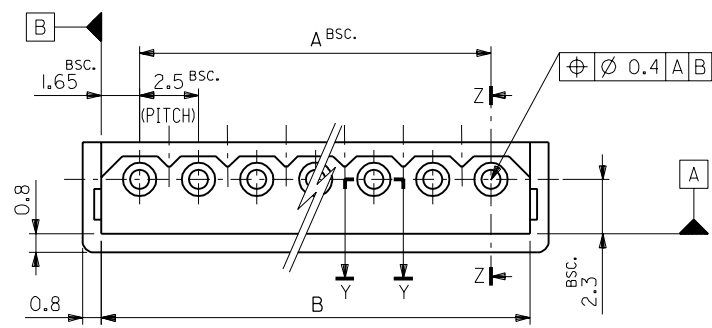
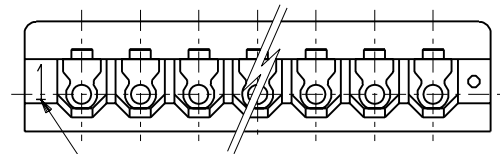
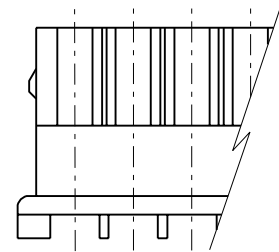
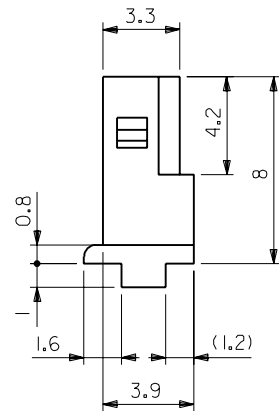
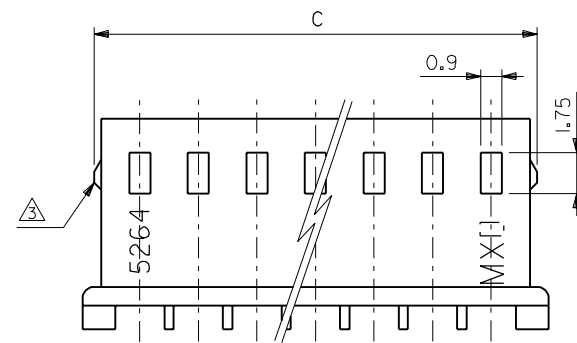


EDP NO. 50-37-5**3
 ENG. NO. SD-5264-N

MM DIMENSIONS IN METRIC DO NOT SCALE DRAWING



NOTES:
 1. SUITABLE TERMINAL : 5263SERIES
 2. MATES WITH : 5267SERIES,5268SERIES
 3. 9 CIRCUITS OR MORE WITHOUT LOOK.



	50.8	47.5	50-37-5203	5264-20	20	
	48.3	45	-5193	-19	19	
	45.8	42.5	-5183	-18	18	
	43.3	40	-5173	-17	17	
	40.8	37.5	-5163	-16	16	
	38.3	35	-5153	-15	15	
	35.8	32.5	-5143	-14	14	
	33.3	30	-5133	-13	13	
	30.8	27.5	-5123	-12	12	
	28.3	25	-5113	-11	11	
	25.8	22.5	-5103	-10	10	
	23.3	20	-5093	-09	9	
	21.4	20.8	17.5	-5083	-08	8
	18.9	18.3	15	-5073	-07	7
	16.4	15.8	12.5	-5063	-06	6
	13.9	13.3	10	-5053	-05	5
	11.4	10.8	7.5	-5043	-04	4
	8.9	8.3	5	-5033	-03	3
	6.4	5.8	2.5	50-37-5023	5264-02	2
	C	B	A	EDP NO.	ENG.NO.	CKT.

角度 ANGLE ±3° 30以上 OVER ±0.3 10以上 30未滿 UNDER ±0.25 10未滿 UNDER ±0.2 一般公差 GENERAL TOLERANCES		H REVISED & REDRAWN (J105910) 記号 LTR 変更内容 REVISION RECORD DR. CHK. DATE		K.T. H.A. 9/11/15 DRAWN BY K.TOJO '91/11/5 APP'D BY '92/01/15 M.ENOMOTO		材料 MATERIAL 66NYLON,UL94V-0 仕上げ FINISH 適用電線範囲 WIRE RANGE 被覆外径 INS. RANGE 材料 MOLEX-JAPAN CO.,LTD. 日本モレックス株式会社 EDP. NO. 50-37-5**3 ENG. NO. SD-5264-N TITLE 名称 2.5 LOW PROFILE RECEPTACLE HOUSING REV H	
---	--	---	--	--	--	---	--

THIS DRAWING CONTAINS INFORMATION THAT IS PROPRIETARY TO MOLEX(JAPAN) AND SHOULD NOT BE USED WITHOUT WRITTEN PERMISSION
 本図面は日本モレックス(株)の所有する情報を含むもので 当社の許可なく複製を禁止する。

MXJ-8