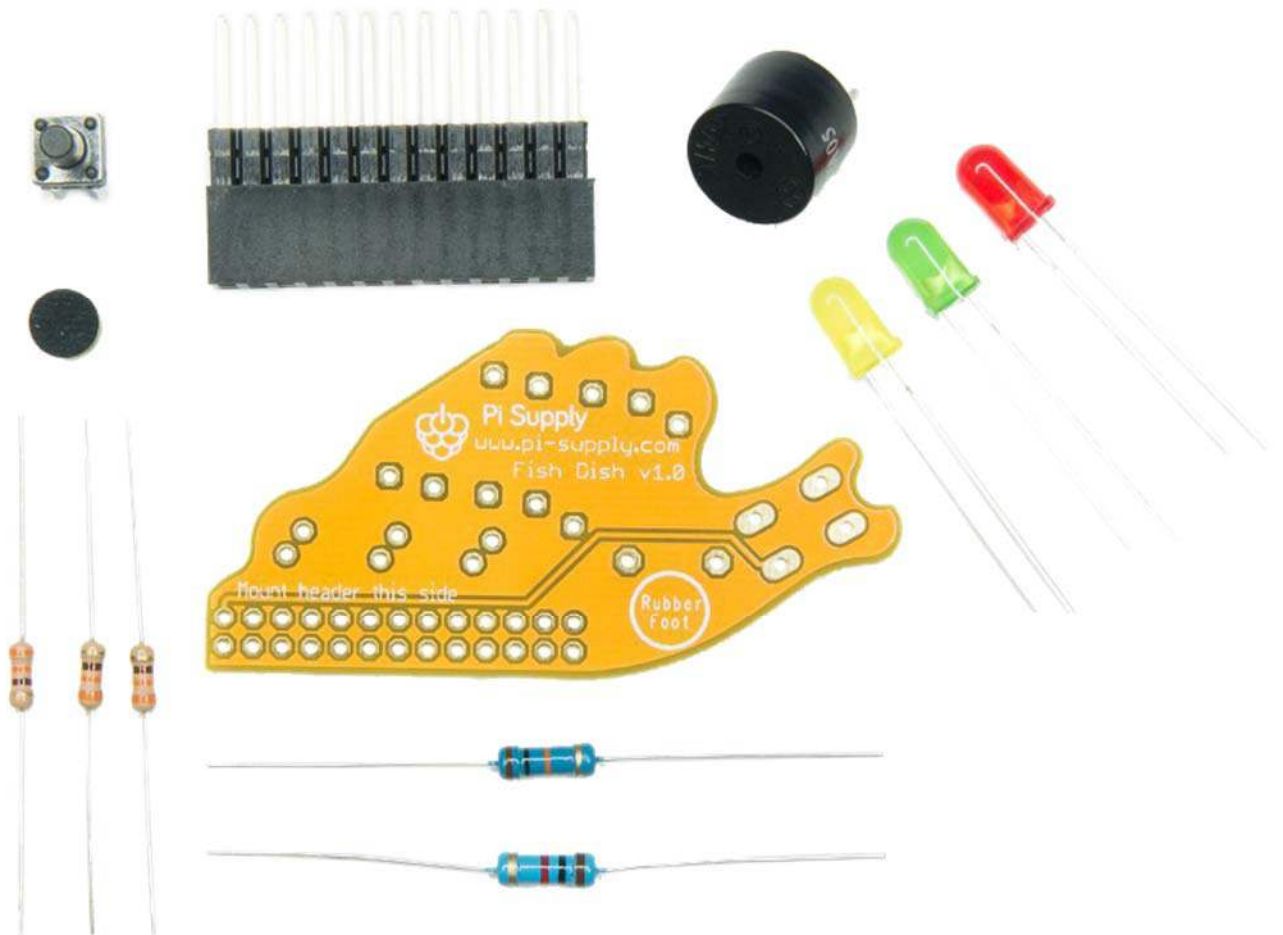




Pi Supply



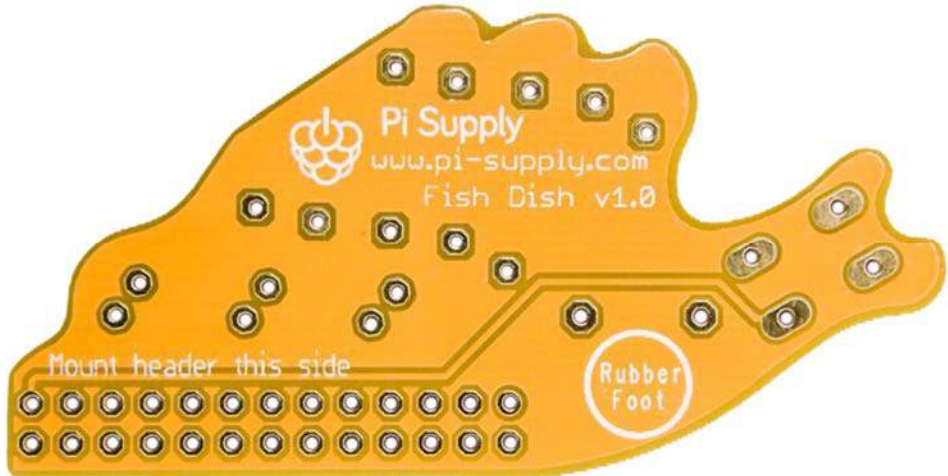
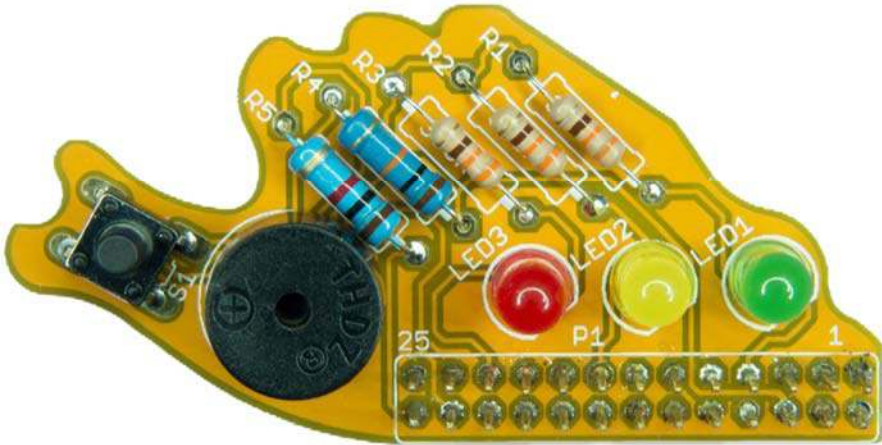
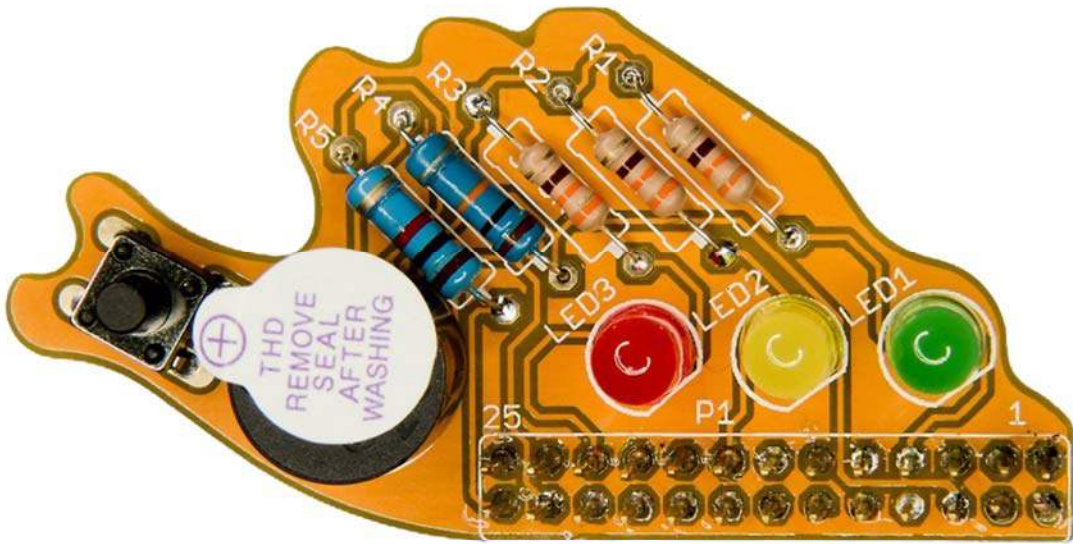
Fish Dish Raspberry Pi LED Buzzer Board

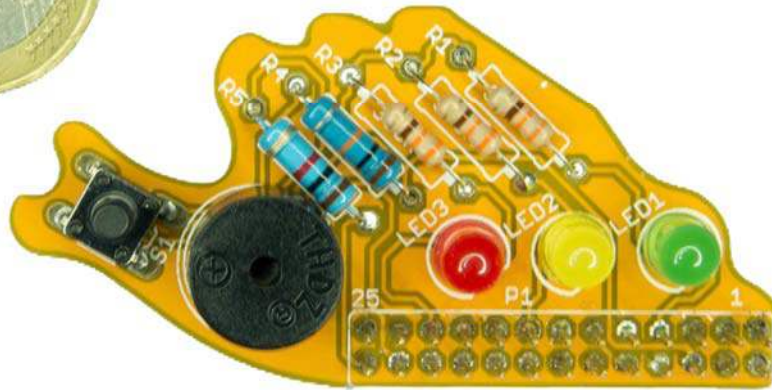
Description

The Fish Dish is a breakout/add on board for the Raspberry Pi (can be used with other boards too - Arduino etc.) which makes it easy and extremely fun to use the GPIO on the Raspberry Pi. It plugs directly onto the GPIO pins with a 2 x 13 header and is in the shape of a three-eyed fish. Works great with Model A, B and B+

Raspberry Pi! It has 3 LEDs (red, yellow, green), a buzzer and a switch. The Fish Dish can therefore be used to showcase a variety of different interfacing techniques, and brings physical computing to the Raspberry Pi in a cute and cheerful way! It also comes with a stacking header (as pictured) meaning that you can still use the other GPIO pins if you wish. **WHY A KIT?** We love electronics kits for a multitude of reasons - they are fun to put together, you get a sense of achievement at the end of it, they are great for learning about soldering and electronics and many many more reasons... At Pi Supply we are quite keen on the whole education and fun aspect of the Raspberry Pi and computing and electronics in general, so we feel that a kit is much more worthwhile to all of our backers. However, you don't need to be a soldering god or an electronics pro to put our kits together - we make them simple enough even for absolute beginners to put together.







<https://uk.pi-supply.com/products/fish-dish-raspberry-pi-led-buzzer-board> 7-31-18