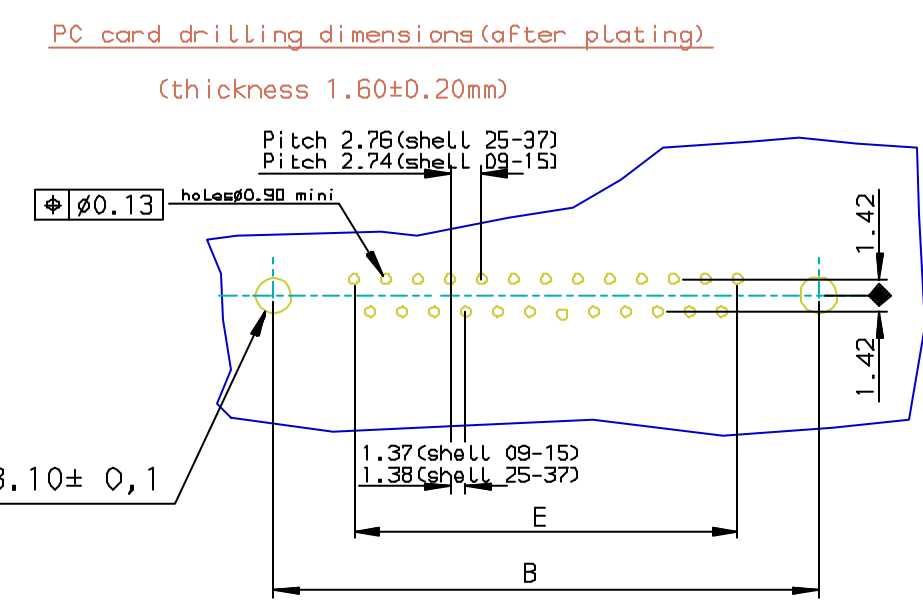
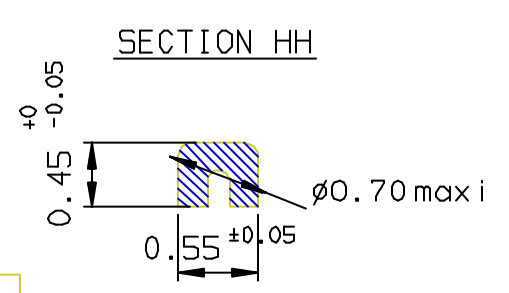


SHELL	A±0.38	B±0.12	C±0.10	D±0.25	E±0.07	PART NUMBER	PART NUMBER
09	30.81	24.99	16.96	16.21	10.96	D09S33E4PV00**	D09S33E6PV00**
15	39.14	33.32	25.18	24.54	19.18	D15S33E4PV00**	D15S33E6PV00**
25	53.03	47.04	39.12	38.25	33.12	D25S33E4PV00**	D25S33E6PV00**
37	69.32	63.50	55.68	54.71	49.68	D37S33E4PV00**	D37S33E6PV00**

Gold flash 0,76 μ gold



**REQUIREMENTS**  
**Technical characteristics:**  
 Shell: steel tin/Zinc Cr3 plated  
 Insulators: self-extinguishing thermoplastic, UL class 94V0  
 Contacts: phosphor bronze, gold (for thickness see table)  
 over 2 μ mini nickel on active area and flash to 1.5 μ maxi SnPb  
 over 1 μ mini nickel on termination.

Cycles ; 200 min for plating 4.  
 Cycles ; 500 min for plating 5.  
 Nuts: brass, tin/Zinc Cr3 plated

**Electrical characteristics:**  
 max. current rating: 5A  
 Test voltage: 1000V  
 Rated voltage: 300V  
 Contact resistance: ≤15mΩ  
 Shell resistance: ≤5mΩ  
 Insulation resistance: ≥5000MΩ

**Climatic characteristics:**  
 Operating temperature range: -55°C +125°C  
**Dimensions:**  
 in accordance with MIL-C-24308

LF FOR LEAD FREE

FOR ROHS DETAILS REFER DWG.NO: C01-8646-0000

European Views

rev	ecn no	dr	date
B	105-0124	JS	2005/07/27
C	106-0074	SK	2006/06/08
-	-	-	-
-	-	-	-
-	-	-	-
-	-	-	-

www.fciconnect.com		surface ISO 1302 ✓	tolerance std ISO 406 ISO 1101	projection mm
TOLERANCES UNLESS OTHERWISE SPECIFIED				
Dr	JOHN SLEEBA	1997/09/08	ANGULAR	0.X ±0.1
Eng	GEORGE VJ	1997/09/08	LINEAR	0.XX ±0.1
Chr	GEORGE VJ	2005/07/27	0.XX* ±1*	0.XXX ±0.1
Appr	KVSD	2005/07/27	Product family	D-SUB Spec ref -
FCi		title SOCKET CONNECT.DELTA D RIGHT ANGLE WITH FEMELLE SREW UNC 4-40		Rev. C
catalog no		DELTA-D		dwg no C01-8646-0556
		CUSTOMER		sheet 1 of 1

Copyright FCI