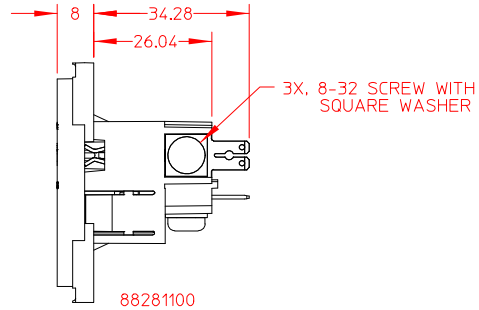
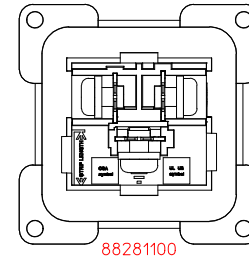


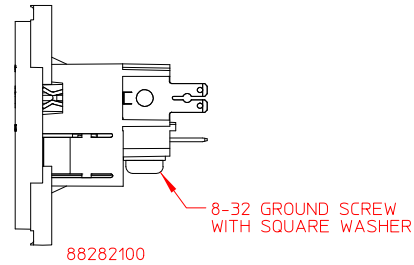
88281100 & 88282100  
QUICK DISCONNECT CONTACTS



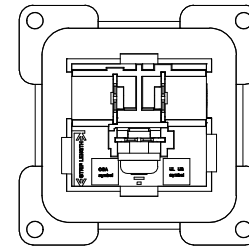
88281100



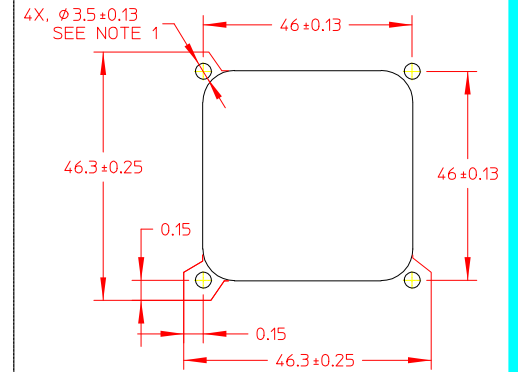
88281100



88282100



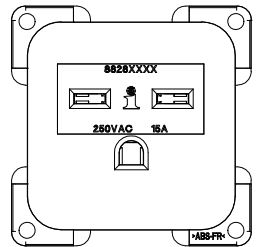
88282100



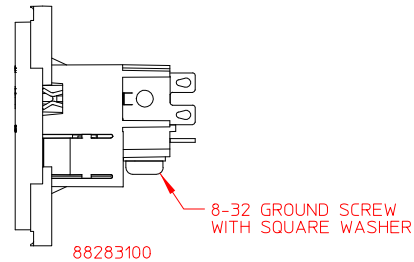
FRONT MOUNT PANEL CUTOUT  
(SNAP-ON BEZEL)  
OR REAR MOUNT PANEL CUTOUT  
(NO SNAP-ON BEZEL)

THIS PANEL CUTOUT IS RECOMMENDED  
WHEN USED IN COMBINATION WITH THE  
88052XXX FAMILY OF SOCKETS.

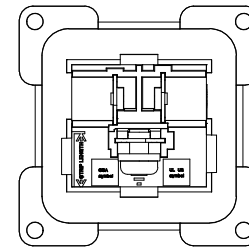
NOTES:  
1. RECOMMENDED DIAMETER FOR THRU-HOLE  
(SCREW/NUT COMBINATION) HARDWARE MOUNTING  
METHOD. OTHER METHODS WILL REQUIRE HOLES  
WITH DIFFERENT DIMENSIONS AND PARAMETERS.



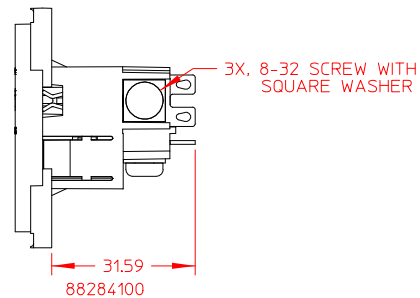
88283100 & 88284100  
SOLDER TAB CONTACTS



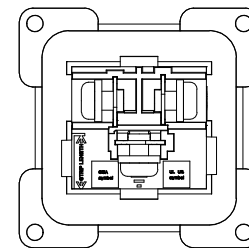
88283100



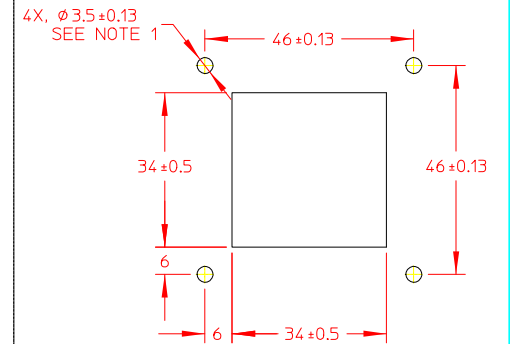
88283100



88284100



88284100



FRONT MOUNT PANEL CUTOUT  
(SNAP-ON BEZEL)

THIS PANEL CUTOUT IS RECOMMENDED  
FOR ALL OTHER APPLICATIONS.

THIS DOCUMENT AND ITS CONTENTS ARE THE PROPRIETARY, CONFIDENTIAL PROPERTY OF INTERPOWER CORPORATION. NO USE OR COPIES MAY BE MADE WITHOUT WRITTEN PERMISSION FROM INTERPOWER.

DIMENSIONS IN: MM		TITLE NEMA 6-15 SCREW MOUNT ASSEMBLIES	
DRAFT BY: BEM DATE: 8-26-15		PART NUMBER: 88281100, 88282100, 88283100, 88284100	
DRAFTING APPROVAL: SRK DATE: 8-26-15		DO NOT SCALE	
MATERIAL:		SHEET 1 OF 1	
		INTERPOWER CORPORATION	

REV	DATE	DESCRIPTION	DATE	BY
1	4	INITIAL RELEASE		
2D	3D	CHANGE DESCRIPTION		
REV				