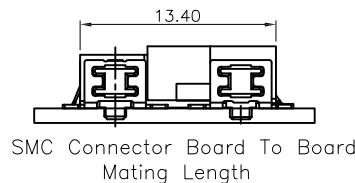
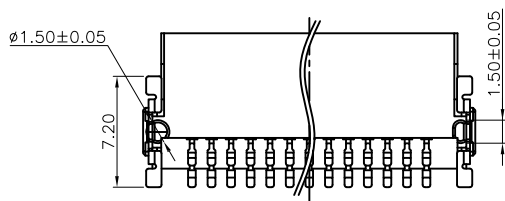
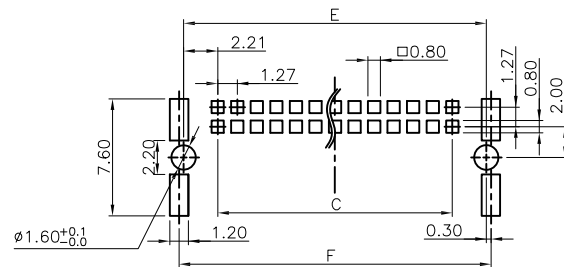
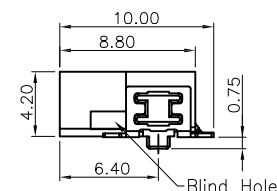
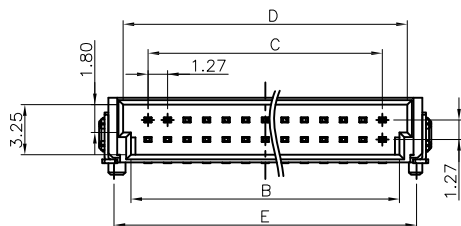
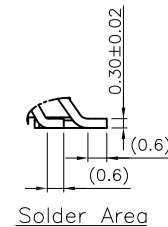
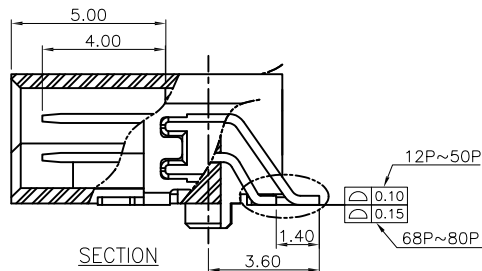
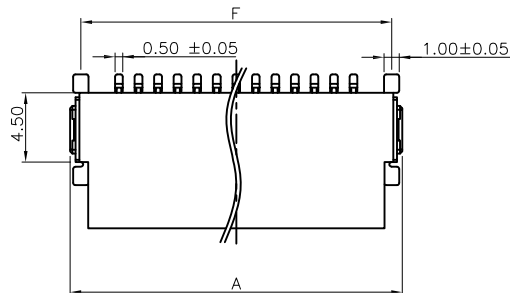


APPROVED: _____
 DATE: _____ TITLE: _____

Rev	AWO #	Description	Date	Appr
-		RELEASED	3/20/17	
A		UPDATE DRAWING	3/18/20	LH/DH



Pin No.	A	B	C	D	E	F
12	12.70	8.57	6.35	9.57	10.77	11.34
16	15.24	11.11	8.89	12.11	13.31	13.88
20	17.78	13.65	11.43	14.65	15.85	16.42
26	21.59	17.46	15.24	18.46	19.66	20.23
30	24.13	20.00	17.78	21.00	22.20	22.77
32	25.40	21.27	19.05	22.27	23.47	24.04
40	30.48	26.35	24.13	27.35	28.55	29.12
50	36.83	32.70	30.48	33.70	34.90	35.47
68	48.26	44.13	41.91	45.13	46.33	46.90
80	55.88	51.75	49.53	52.75	53.95	54.52

SPECIFICATIONS:

Material:
 Insulator: Hi-temp thermoplastic, rated UL 94V-0
 Insulator color: Black

Contacts: Phosphor Bronze
 Board Lock: Brass, Tin plated

Plating:
 Gold flash over Nickel underplate on contact area,
 Tin over Nickel underplate on solder tails

Electrical:
 Current rating: 1.2 Amp max
 Contact resistance: 25 mohms max
 Insulation resistance: 1000 Mohms min
 Withstanding voltage: 500 VAC for 1 minute

Temperature Rating:
 Operating temperature: -55°C to +125°C

Environmental:
 Lead free, RoHS compliant.



PACKAGED ON TAPE & REEL

UNLESS OTHERWISE SPECIFIED
 ALL DIMENSIONS ARE MILLIMETERS
 TOLERANCES: EXCEPT AS NOTED
 MM ANGLE
 X.X ± 0.35 ± 2°
 X.XX ± 0.20
 X.XXX ± 0.10

ADAM TECH
 INTERCONNECTS
 909 Rahway Avenue,
 Union, NJ 07083
 Phone: 908-687-5000
 Fax: 908-687-5710

APPROVALS		DATE
DRAWN	AY	3/20/17
CHECKED	MC	3/20/17
APPROVED		

TITLE			1.27mm BOARD TO BOARD STACKING CONNECTOR, MALE, RIGHT ANGLE, SMT TYPE		
SIZE	PART NO.	REV.			
X	ESMC-M-XX-SGR-SMT-T/R	A			
REF: S00242T		SCALE: NTS	SHEET 1 OF 1		