

RoHS Compliant

REV	SIGN	DATE	DESCRIPTION	APPROVER
A0		2021.03.08	Initial Release	LENA

*THIS IS CAD DRAWING, DO NOT REVISE MANUALLY!!!*

**COIL SPECIFICATION**

- Coil Nominal Voltage: 12V DC
- Coil Nominal Current: 30mA
- Coil Resistance: 400Ω ±10%
- Coil Power Consumption: Abt. 0.36W
- Pull-In Voltage(VDC): 9.6V Max
- Drop-Out Voltage(VDC): 0.6V Min
- Maximum Allowable Voltage: 13.2V
- Operate Time: 10 mSec. Max.
- Release Time: 5 mSec. Max.

**CONTACT RATING**

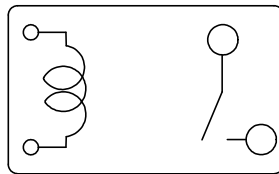
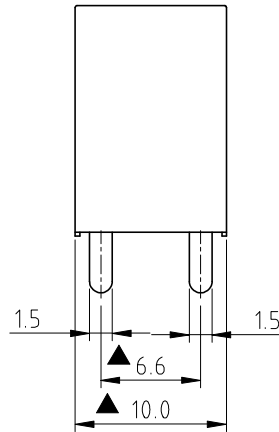
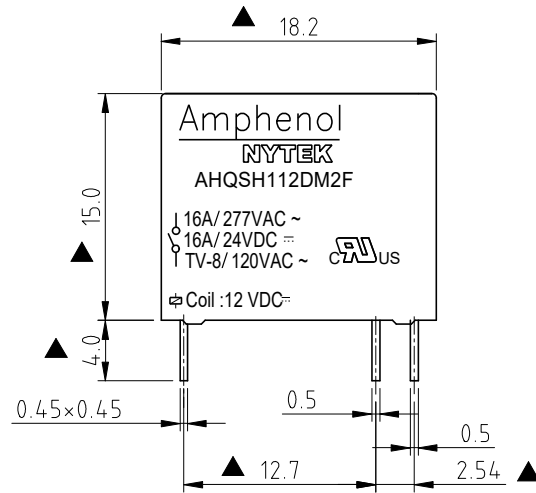
- Rated Load(Resistive): 16A 277V AC, 16A 24VAC
- Rated Carrying Current: 16A
- Max. Allowable Voltage: AC 277V / DC 24V
- Max. Allowable Current: 16A
- Max. Allowable Power Force: 4,432VA 384W
- Contact Material: Ag Alloy
- Contact Form: SPST

**ELECTRICAL**

- Dielectric Strength:
  - Between Coil & Contact: 4,000V AC (50/60 Hz for 1 minute)
  - Between Contact: 1,000V AC (50/60 Hz for 1 minute)
- Contact Resistance: 100mΩ Max. at 1A, 6V DC
- Insulation Resistance: 100MΩ Min at 500V DC

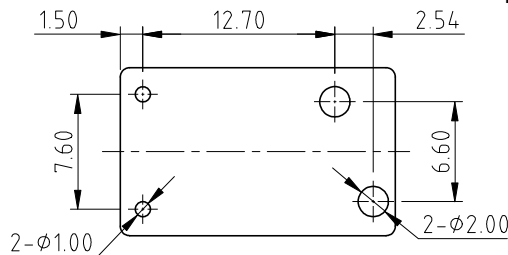
**MECHANICAL**

- Life Expectancy(Operations):
  - Electrical: 1 x 10<sup>8</sup> operations at Rated Resistive load
  - Mechanical: 1 x 10<sup>7</sup> operations at No Resistive load
- Operating Temperature: -40°C ~ 105°C
- Safety Approval: UL



Part No. AHQ SH 1 12 D M 2 F 00G

- Insulation System: F : Class F
- Rated Carrying Current: 2 : 16A
- Contact Form: M : One Form A
- Coil Type: D : Standard DC Coil
- Coil Voltage: 12: 12V(VDC)
- Number of pole, 1: One Pole
- Type of sealing : SH:RT III wash tight
- TYPE : AMI



P.C.B. LAYOUT  
Bottom View

**Amphenol ANYTEK**

**CUSTOMER COPY**

ALL RIGHTS RESERVED. REPRODUCTION OR ISSUE TO THIRD PARTIES IN ANY FORM WHATSOEVER IS NOT PERMITTED WITHOUT WRITTEN AUTHORITY FROM THE PROPRIETOR. PROPERTY OF ANYTEK TECHNOLOGY CO., LTD

TITLE	AHQ Series Relay, one pole, 16V DC, RT III Wash Tight			
PART NO.	AHQSH112DM2F00G	DWG NO.	8AHQ0004	
APPROVED	CHECKED	DESIGNED	DRAWN	CUST NO.
		LENA 2021.03.08	LENA 2021.03.08	
SHEET: 01/01		UNIT: mm	Tolerance	
SCALE: 2:1		X.X	±0.50	
REV.: A0		X.XX	±0.30	
		X°	±0.10	
		X°	±1°	