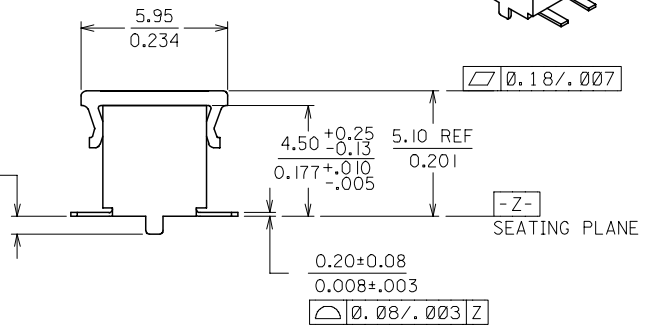
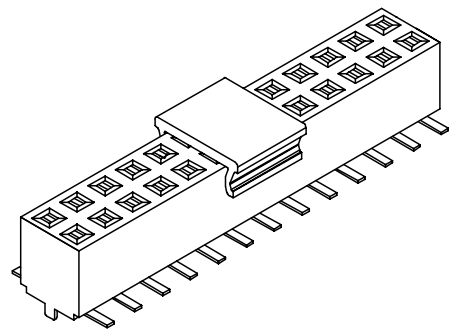
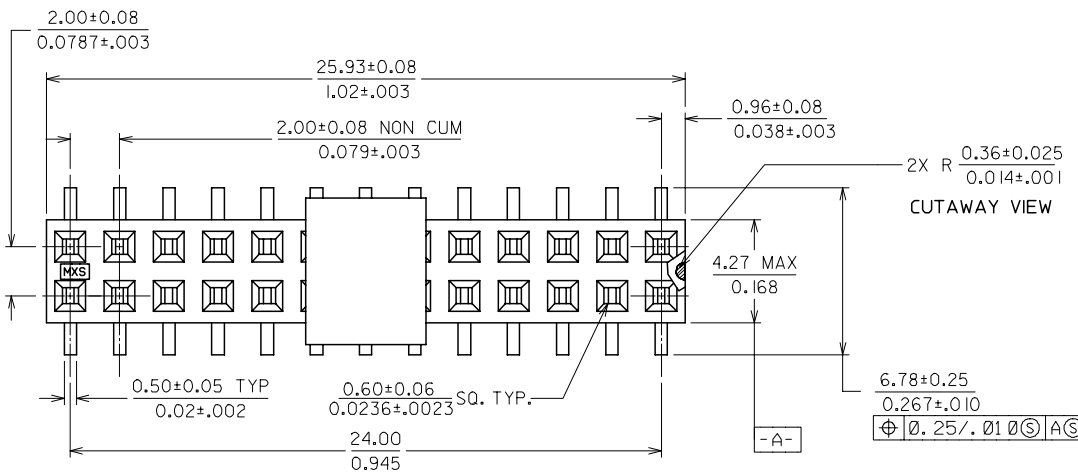
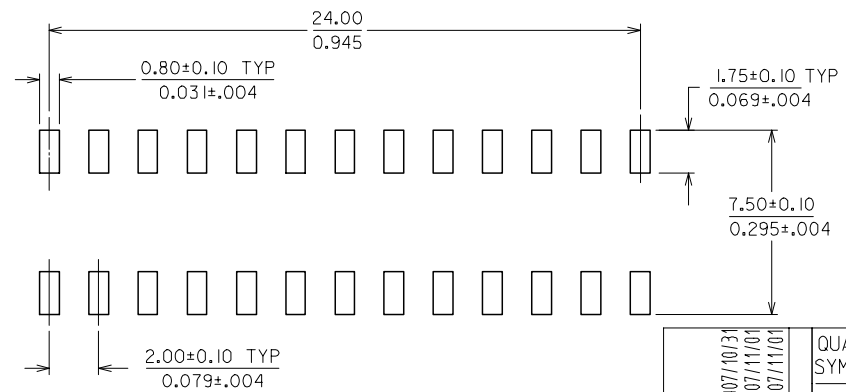


PART NUMBER	COVER	PACKAGING
87381-8207	NO	TUBE
87381-8217	YES	TUBE
87381-8227	YES	T/REEL



- NOTES:
- PLATING OPTIONS  
0.76um/30uin MIN. GOLD IN CONTACT AREA  
2.54um/100uin MIN. TIN IN SOLDER TAIL AREA  
BOTH OVER 1.27um/50uin MIN. NICKEL OVERALL
  - PRODUCT SPECIFICATION PS-87380 APPLIES
  - COPLANARITY OF SOLDER TAIL IS TO BE MEASURED BY RESTING THE PART ON A FLAT GAUGE SURFACE
  - SECONDARY DIMENSIONS FOR REFERENCE ONLY
  - PARTS SHALL BE PACKED IN MOISTURE BARRIER BAG.



RECOMMENDED PCB LAYOUT

ADD NOTE 5.

EC NO: S2008-0281	2007/10/31
DRWNS:KANG	2007/11/01
CHKD:ATSEE	2007/11/01
APPR:MLONG	2007/11/01

QUALITY SYMBOLS	DESCRIPTION
▽=0	
▽=0	

GENERAL TOLERANCES (UNLESS SPECIFIED)	
mm	INCH
4 PLACES ±---	±---
3 PLACES ±---	±.005
2 PLACES ±0.13	±---
1 PLACE ±---	±---
ANGULAR ± 3 °	

DIMENSION STYLE		SCALE		DESIGN UNITS		THIRD ANGLE PROJECTION	
MM/IN		NTS		METRIC			
DRAWN BY	DATE	TITLE		MGRID, TOP ENTRY RECEPT. 26 CKTS, 4.50MM HT. WITH PEG, SMT			
G0H	1996/04/16	MOLEX INCORPORATED					
CHECKED BY	DATE	DOCUMENT NO.					
GMS	1996/04/16	SD-87381-820*		SHEET NO.		1 OF 2	
APPROVED BY	DATE	SEE TABLE		THIS DRAWING CONTAINS INFORMATION THAT IS PROPRIETARY TO MOLEX INCORPORATED AND SHOULD NOT BE USED WITHOUT WRITTEN PERMISSION			
RWONG	1996/04/16	SIZE A3					

DIMENSION STYLE		SCALE		DESIGN UNITS		THIRD ANGLE PROJECTION	
MM/IN		NTS		METRIC			
DRAWN BY	DATE	TITLE		MGRID, TOP ENTRY RECEPT. 26 CKTS, 4.50MM HT. WITH PEG, SMT			
G0H	1996/04/16	MOLEX INCORPORATED					
CHECKED BY	DATE	DOCUMENT NO.					
GMS	1996/04/16	SD-87381-820*		SHEET NO.		1 OF 2	
APPROVED BY	DATE	SEE TABLE		THIS DRAWING CONTAINS INFORMATION THAT IS PROPRIETARY TO MOLEX INCORPORATED AND SHOULD NOT BE USED WITHOUT WRITTEN PERMISSION			
RWONG	1996/04/16	SIZE A3					

10 9 8 7 6 5 4 3 2 1

F

E

D

C

B

A

F

E

D

C

B

A

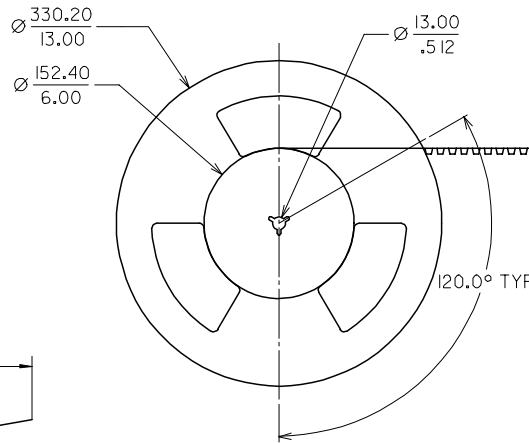
CUSTOMER PULL OUT DIRECTION

2.00  
 $\frac{+0.10}{0}$   
 $\frac{+0.04}{.059}$  (TYP)  
 $\frac{-0.000}{.079}$   
 (PILOT HOLE)

12.00  
 $\frac{.472}{.157}$

4.00

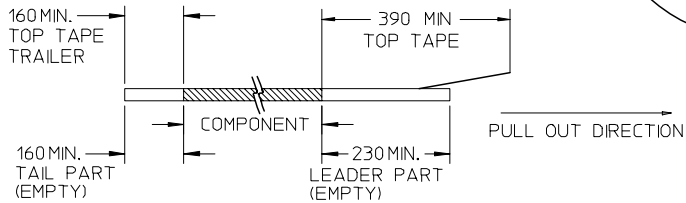
44.00  
 1.732



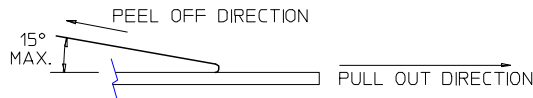
TAPE AND REEL ORIENTATION

NOTES:

1. LEADER AND TRAILER TAPE



2. PEELING OFF FORCE OF THE TOP TAPE: 20-80gf.  
 (PEELING DIRECTION AS SHOWN IN FOLLOWING FIGURE)



3. PACKAGING STANDARD IS AS PER EIA-481.

4. TAPE & REEL QUANTITY = 1000 PCS/REEL

ADD NOTE 5.	EC NO: S2008-0281	2007/10/31
	DRWNS:KANG	2007/11/01
	CHKD:ATSEE	2007/11/01
	APPR:MLONG	2007/11/01
REV	DESCRIPTION	
1		

QUALITY SYMBOLS	▽=0
	∇=0

GENERAL TOLERANCES (UNLESS SPECIFIED)	mm	INCH
	4 PLACES ± ---	± ---
	3 PLACES ± ---	± .005
	2 PLACES ± 0.13	± ---
	1 PLACE ± ---	± ---
	ANGULAR ± 3 °	
DRAFT WHERE APPLICABLE MUST REMAIN WITHIN DIMENSIONS		

DIMENSION STYLE		SCALE	DESIGN UNITS	THIRD ANGLE PROJECTION
MM/IN		NTS	METRIC	
DRAWN BY	DATE	TITLE		
GOH	1996/04/16	MGRID, TOP ENTRY RECEPT.		
CHECKED BY	DATE	26 CKTS, 4.50MM HT.		
GMS	1996/04/16	WITH PEG, SMT		
APPROVED BY	DATE	MOLEX INCORPORATED		
RWONG	1996/04/16	MOLEX INCORPORATED		
MATERIAL NO.	DOCUMENT NO.	SHEET NO.		
	SD-87381-820*	2 OF 2		
SIZE	THIS DRAWING CONTAINS INFORMATION THAT IS PROPRIETARY TO MOLEX INCORPORATED AND SHOULD NOT BE USED WITHOUT WRITTEN PERMISSION			
A3				

9 8 7 6 5 4 3 2 1