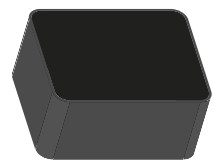


# Surface Mount 1227.60MHz SAW Filter



2.0 x 1.6 x 0.75 mm

**AFS20A20-1227.60-T3**



RoHS/RoHS II compliant

Moisture Sensitivity Level (MSL) – This product is Hermetically Sealed and not Moisture Sensitive - MSL = N/A: Not Applicable

## FEATURES:

- 2.0 x 1.6 x 0.75 mm low profile SMT package
- Low Insertion loss
- Excellent selectivity with high out-of-band rejection

## APPLICATIONS:

- Wireless Communication
- Remote Control
- Cellular Phones

## ELECTRICAL SPECIFICATIONS:

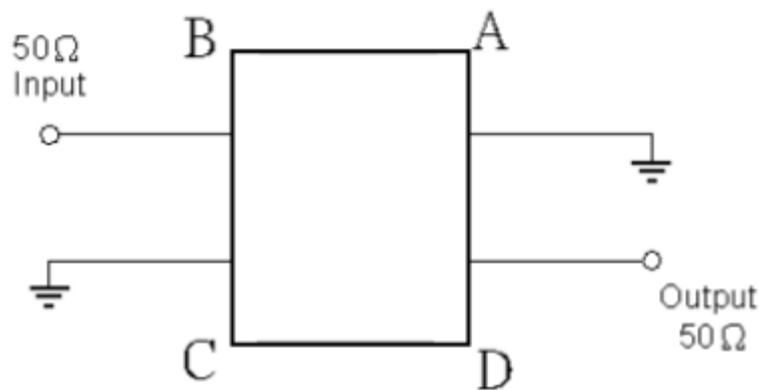
### Maximum Ratings

Item	Value
Input Power Level	+20 dBm max.
DC Permissive Voltage	3V DC max.
Operating Temperature Range	-55°C to + 105°C
Storage Temperature Range	-55°C to + 105°C

Parameters	Minimum	Typical	Maximum	Units	Notes
Center Frequency ( $f_c$ )		1227.60		MHz	
Insertion Loss (IL)		2.60	3.00	dB	
3dB Bandwidth	20	42		MHz	
Amplitude Ripple		0.80	2.00	dB	1217.60 ~ 1237.6MHz
Group Delay		12	26	ns	1217.60 ~ 1237.6MHz
Group Delay Ripple		23	70	ns	1217.60 ~ 1237.6MHz
Worst-Case Input / Output Return Loss	8.0	10.5		dB	1217.60 ~ 1237.6MHz
Stop-band Attenuation (Referenced to 0.0 dB)	15	20		dB	300MHz ~ 1152MHz
	15	20			1302MHz ~ 1900MHz
	15	21			1900MHz ~ 3000MHz
Source Impedance ( $Z_s$ )		50		$\Omega$	See note # 1
Load Impedance ( $Z_L$ )		50		$\Omega$	See note # 1

**Note #1:** No matching network required for operation into 50 $\Omega$ 's

## TEST CIRCUIT:



# Surface Mount 1227.60MHz SAW Filter

AFS20A20-1227.60-T3

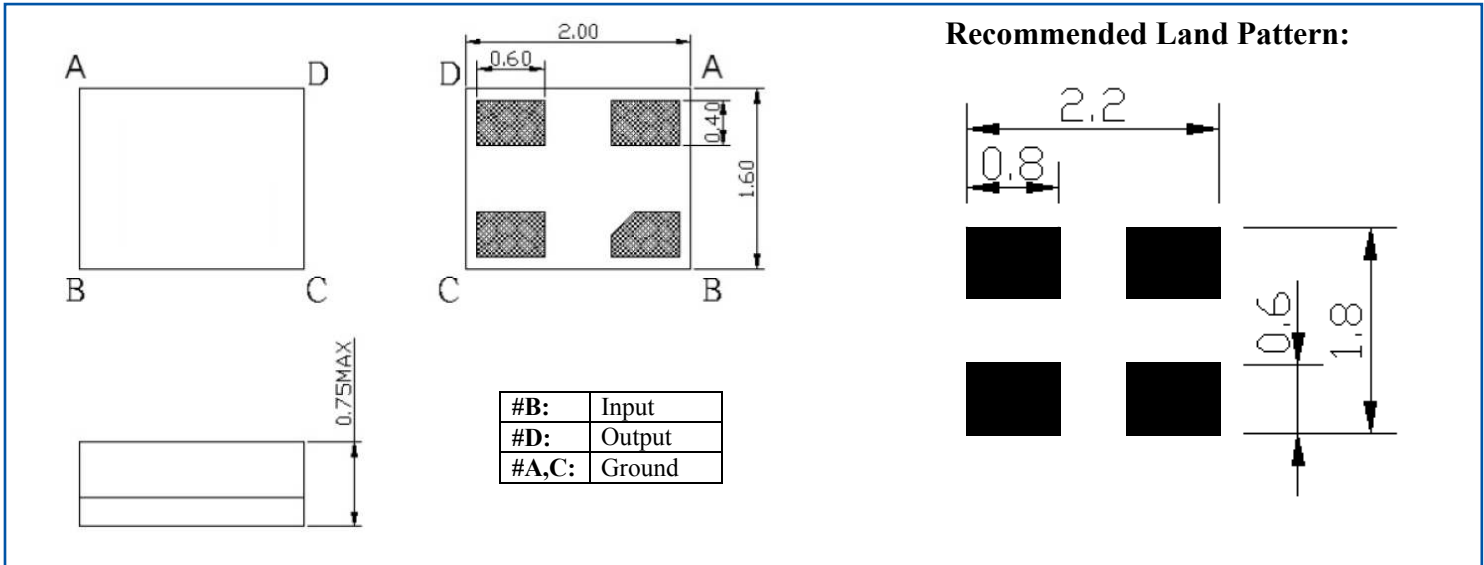


RoHS/RoHS II compliant

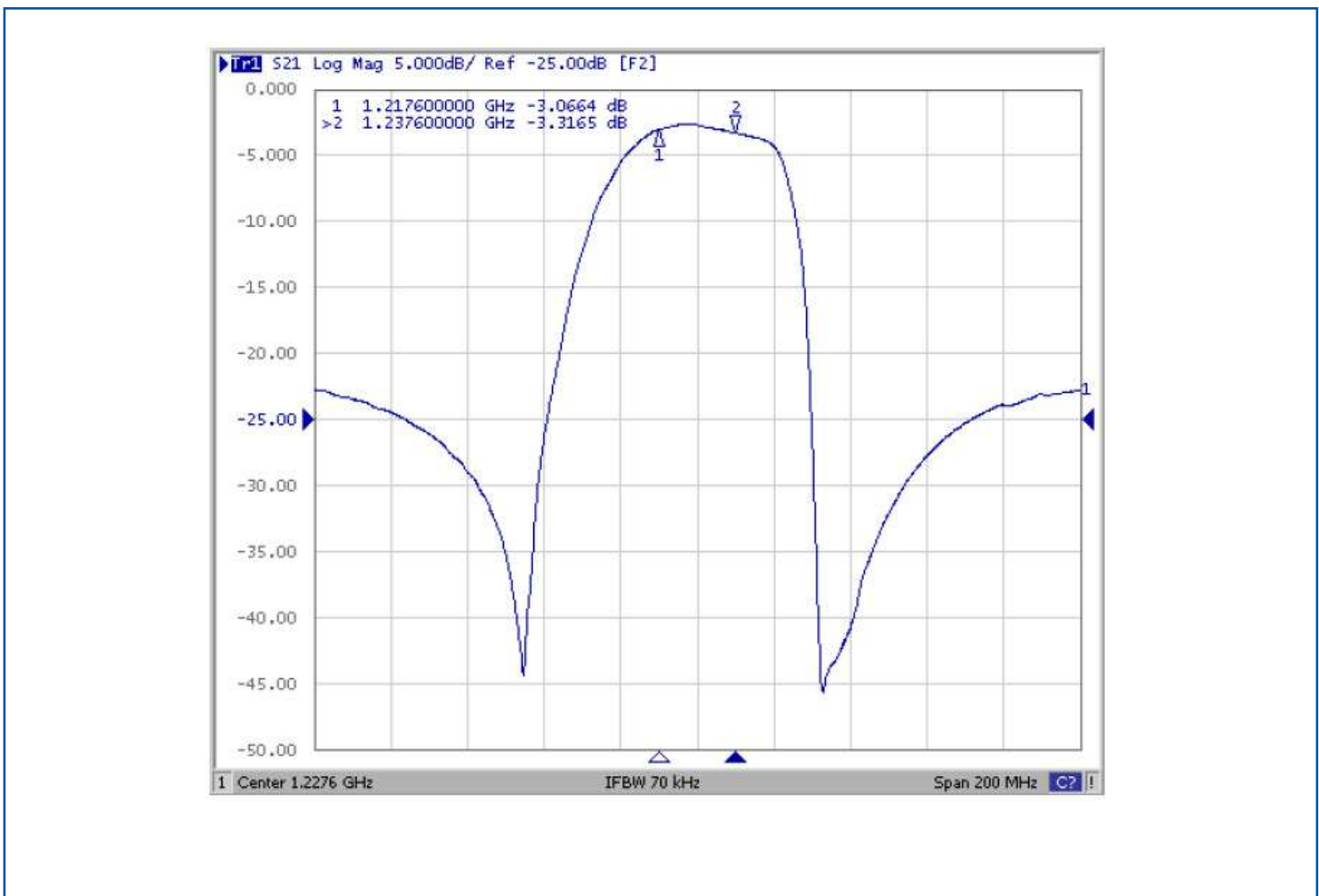


2.0 x 1.6 x 0.75 mm

## OUTLINE DIMENSION:



## FILTER FREQUENCY RESPONSE (NARROWBAND)



# Surface Mount 1227.60MHz SAW Filter

AFS20A20-1227.60-T3

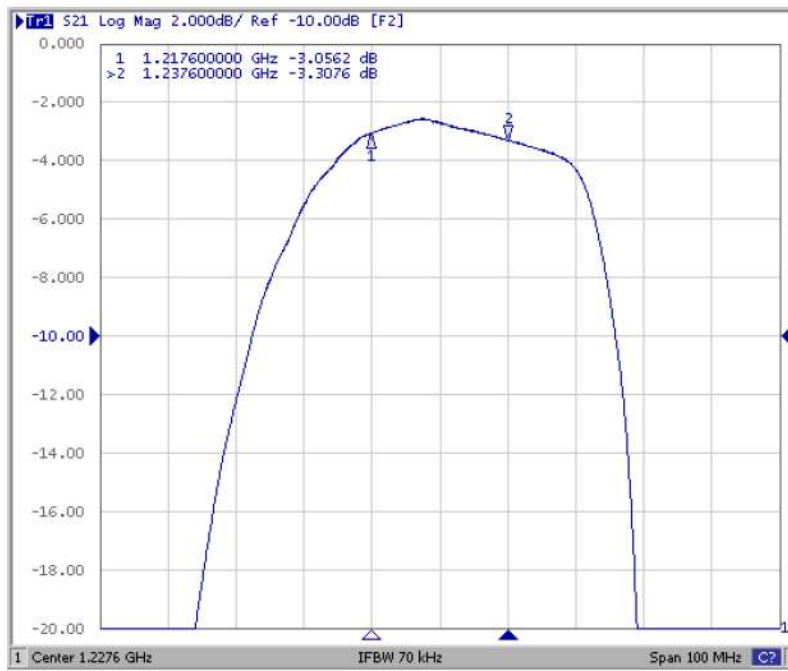


RoHS/RoHS II compliant

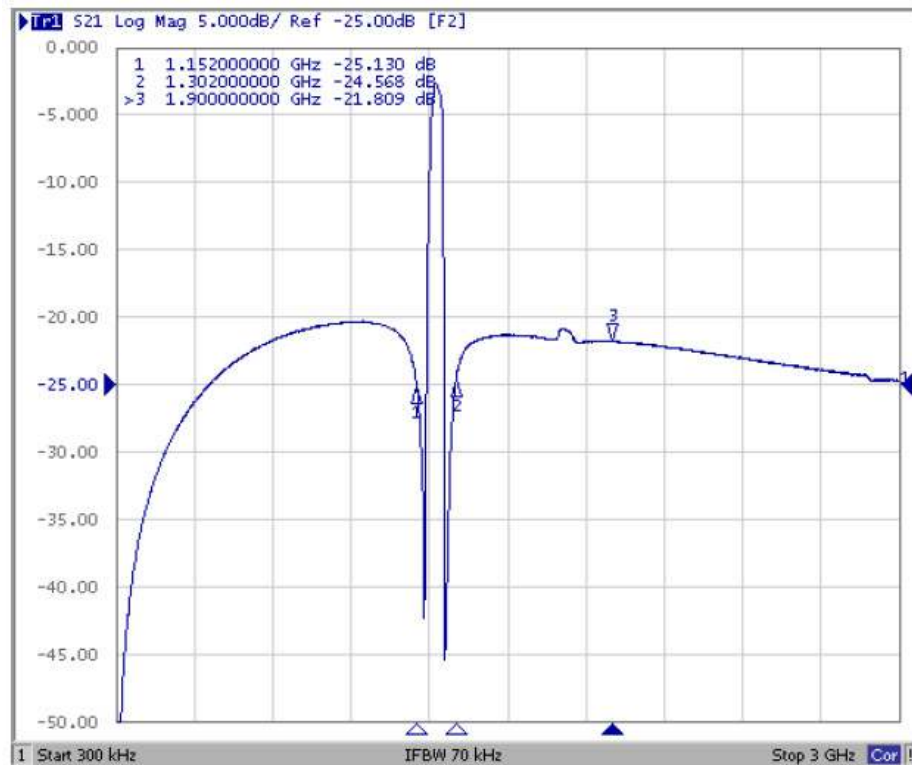


2.0 x 1.6 x 0.75 mm

## FILTER FREQUENCY RESPONSE (WITH-IN-PASSBAND)



## FILTER FREQUENCY RESPONSE (WIDEBAND)



ABRACON IS  
ISO 9001:2008  
CERTIFIED



Visit [www.abracon.com](http://www.abracon.com) for Terms & Conditions of Sale  
30332 Esperanza, Rancho Santa Margarita, California 92688  
tel 949-546-8000 | fax 949-546-8001 | [www.abracon.com](http://www.abracon.com)

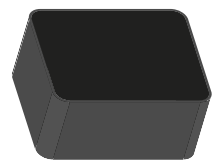
Revised: 02.16.15

# Surface Mount 1227.60MHz SAW Filter

AFS20A20-1227.60-T3

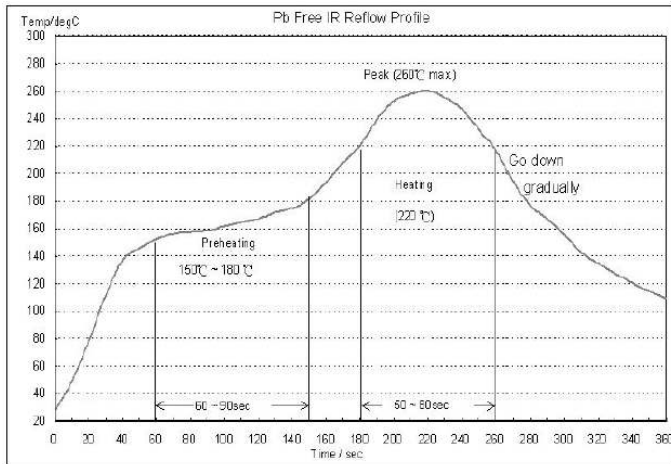


RoHS/RoHS II compliant



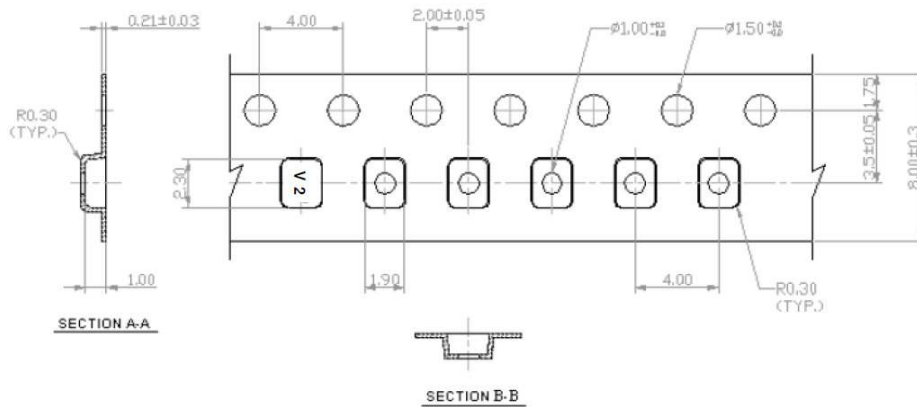
2.0 x 1.6 x 0.75 mm

## REFLOW PROFILE:

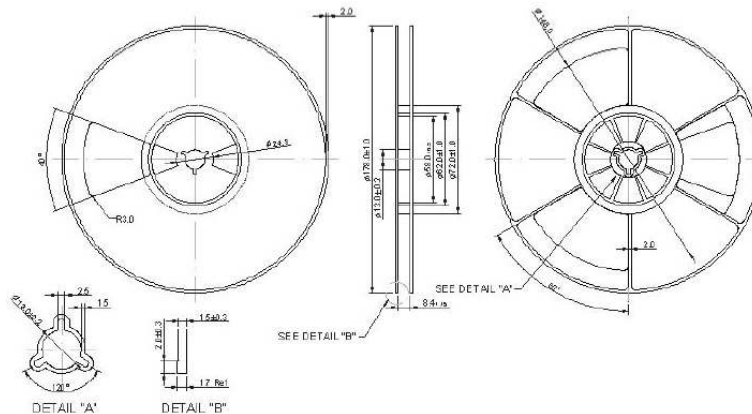


## TAPE & REEL:

Packaging: 3,000 Units Per Reel



## Reel Dimensions



Dimensions: mm

**ATTENTION:** Abracon Corporation's products are COTS – Commercial-Off-The-Shelf products; suitable for Commercial, Industrial and, where designated, Automotive Applications. Abracon's products are not specifically designed for Military, Aviation, Aerospace, Life-dependant Medical applications or any application requiring high reliability where component failure could result in loss of life and/or property. For applications requiring high reliability and/or presenting an extreme operating environment, written consent and authorization from Abracon Corporation is required. Please contact Abracon Corporation for more information.

ABRACON IS  
ISO 9001:2008  
CERTIFIED



Visit [www.abracon.com](http://www.abracon.com) for Terms & Conditions of Sale  
30332 Esperanza, Rancho Santa Margarita, California 92688  
tel 949-546-8000 | fax 949-546-8001 | [www.abracon.com](http://www.abracon.com)

Revised: 02.16.15