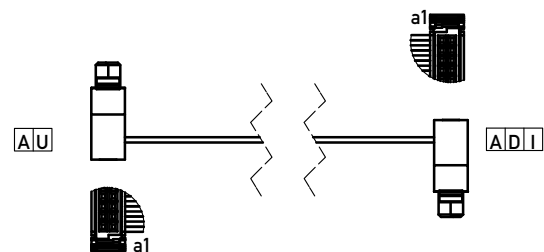
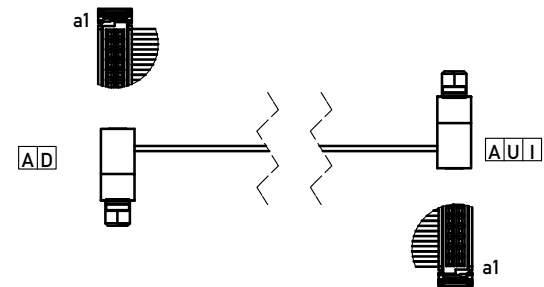
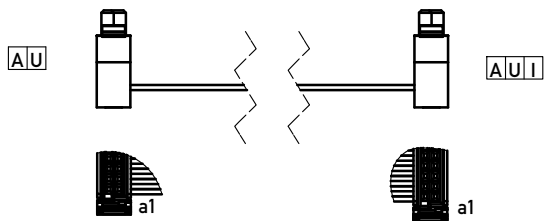


## Attachment & Connector Orientation

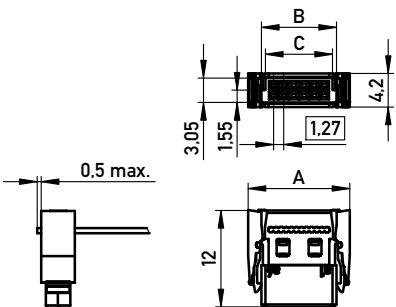
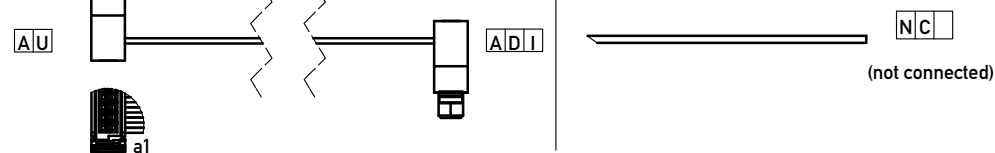
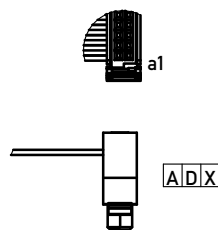
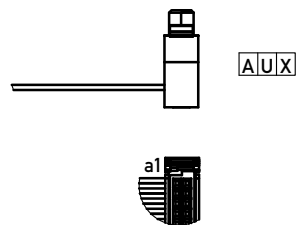
1:1 connection type  I

Connector #1 Connector #2



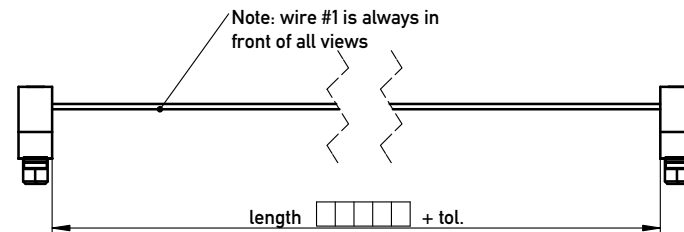
1:2 Crossed connection type  X

Connector #2 will be 180° rotated



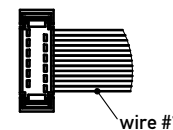
No. of Pin	Dim A	Dim B	Dim C
12	12.69	9.37	8.37
16	15.23	11.91	10.91
20	17.77	14.45	13.45
26	21.58	18.26	17.26
32	25.39	22.07	21.07
40	32.53	27.15	26.15
50	38.88	33.5	32.5
68	50.31	44.93	43.93
80	57.93	52.55	51.55

## Wire Counting & Flat Cable Specification



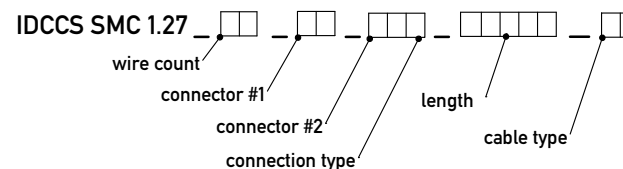
Tolerances depends on cable length:  
 <= 1000mm Tol. 0/+5mm  
 <= 3000mm Tol. 0/+10mm  
 > 3000mm Tol. 0/+20mm

Available wire count
12
16
20
26
32
40
50
68
80



Available cable type				
code	cable type	AWG	wire #1 colour	temp range (static)
PV	PVC	30/7	red	-20°/+105°C
TP	TPE-S	30/7	green	-40°/+125°C
HF	Polyolefin (free of halogen)	30/7	blue	-20°/+105°C

### Product Code



Example for a 1:2 connection cable assembly: SMC 0.635  80  AU  AUX  1250  PV

Example for a 1:1 connection cable assembly: SMC 0.635  80  AU  AUI  1250  PV

Information:	Tolerances	Scale 2:1	Sheet 1/1
	All Dimensions in mm		
All rights reserved. Only for Information. To insure that this is the latest version of this drawing, please contact one of the ERNI companies before using.	Subject to modification without prior notice. Drawing will not be updated.	Designation	
		SMC Standard Cable Flat Ribbon Cable Assemblies	
www.ERNI.com	838000		I
	Class IDCCS		A3

Copyright by ERNI GmbH. Proprietary notice pursuant to ISO 16106 to be observed.