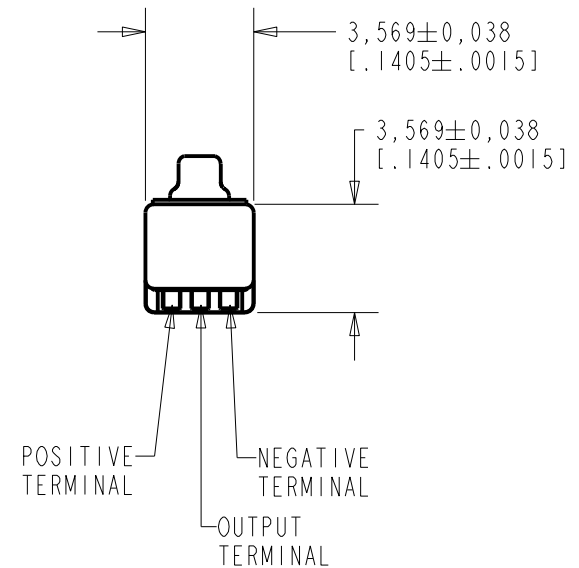
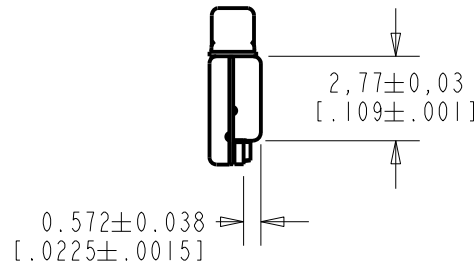
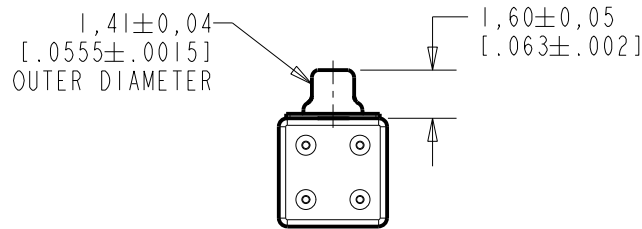


NOTE:
1. INCREASED PRESSURE AT SOUND INLET CAUSES A POSITIVE GOING VOLTAGE TO APPEAR AT THE OUTPUT TERMINAL, RELATIVE TO THE NEGATIVE TERMINAL.



NOMINAL WEIGHT
.08 GRAMS

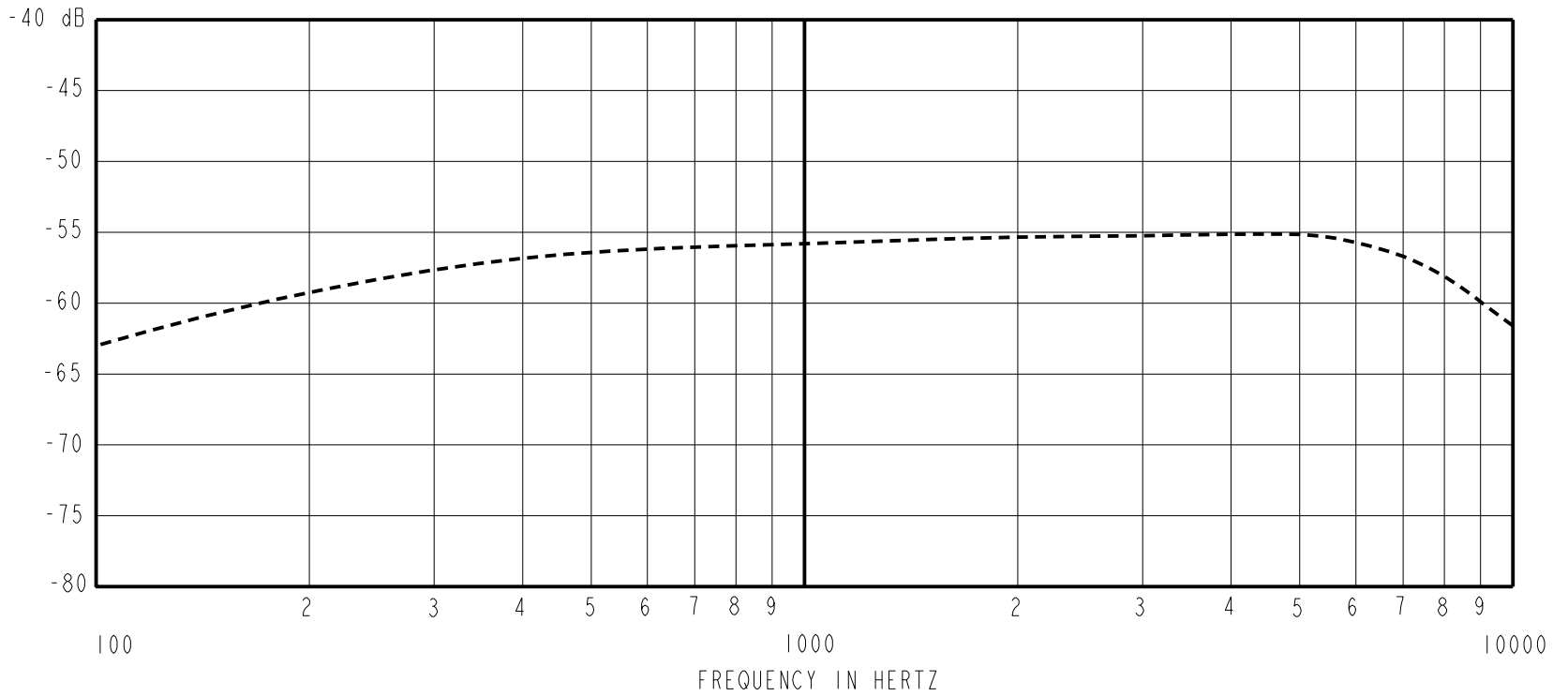
DIMENSIONS IN MILLIMETERS [INCHES]

Revision	C.O. #	Implementation Date	RELEASE LEVEL	REVISION
H	MI0105774	10-31-14	Active	H
G	MI0105440	3-19-14		

SCALE: 4:1		DR. BY: LSY	DATE: 11-13-06
DO NOT SCALE DRAWING			
TITLE: MICROPHONE		GJP	11-22-06
OUTLINE DRAWING		APP. BY: GJP	DATE: 11-22-06
TM-24568-000		SHT 1.1	

KNOWLES ELECTRONICS
ITASCA, ILLINOIS U.S.A.

SENSITIVITY IN dB RELATIVE TO 1.0 VOLT/0.1 Pa (N/M²)
FOR CONDITIONS SHOWN BELOW.



FREQUENCY	SENSITIVITY			DEVICE CONFORMITY	
	MIN.	NOM.	MAX.	RANGE OF DEVIATION FROM 1KHz	
100	---	-62.5	---	-10.0	-3.0
1000	-59.0	-56.0	-53.0	0.0	0.0
5800	---	-55.5	---	-3.0	+4.0

- NOTES:
1. CASE CONNECT TO NEGATIVE TERMINAL.
 2. MICROPHONE TO BE FUNCTIONAL WITH 1.6 VDC SUPPLY.
 3. TYPICAL SENSITIVITY TO HUMIDITY AT 1000Hz IS 0.03 dB/%RH
 4. SENSITIVITY AND NOISE VALUES INDICATED ON THIS SPECIFICATION ARE VALID AT 50% HUMIDITY.

PORT LOCATION	DC SUPPLY	AMPLIFIER CURRENT DRAIN	SENSITIVITY CHANGE ON REDUCING SUPPLY TO 0.9VDC	"A" WEIGHTED NOISE (1 KHz EQUIVALENT SPL)	OUTPUT IMPEDANCE OHMS		
					MIN.	NOM.	MAX.
12S	1.3V	50 μ A MAX.	3 dB MAX.	29.0 dB MAX.	2800	4400	6800

Revision	C.O. #	Implementation Date	RELEASE LEVEL	REVISION
H	M10105774	10-31-14	Active	H
G	M10105440	3-19-14		

<p>KNOWLES ELECTRONICS ITASCA, ILLINOIS U.S.A.</p>	<p>WHEN TEST LIMITS ARE USED TO ESTABLISH INCOMING INSPECTION ACCEPTANCE/REJECTION CRITERIA, CORRELATION OF TEST EQUIPMENT WITH KNOWLES IS ALSO REQUIRED FOR ELIMINATION OF EQUIPMENT AND TEST METHOD VARIATION</p>	<p>DR. BY DATE</p> <p>LSY 11-13-06</p>
	<p>TITLE: MICROPHONE</p>	<p>APP. BY DATE</p> <p>GJP 11-22-06</p>
	<p>PERFORMANCE SPECIFICATION</p>	<p>DATE</p> <p>GJP 11-22-06</p>
	<p>TM-24568-000</p> <p>SHT 2.1</p>	