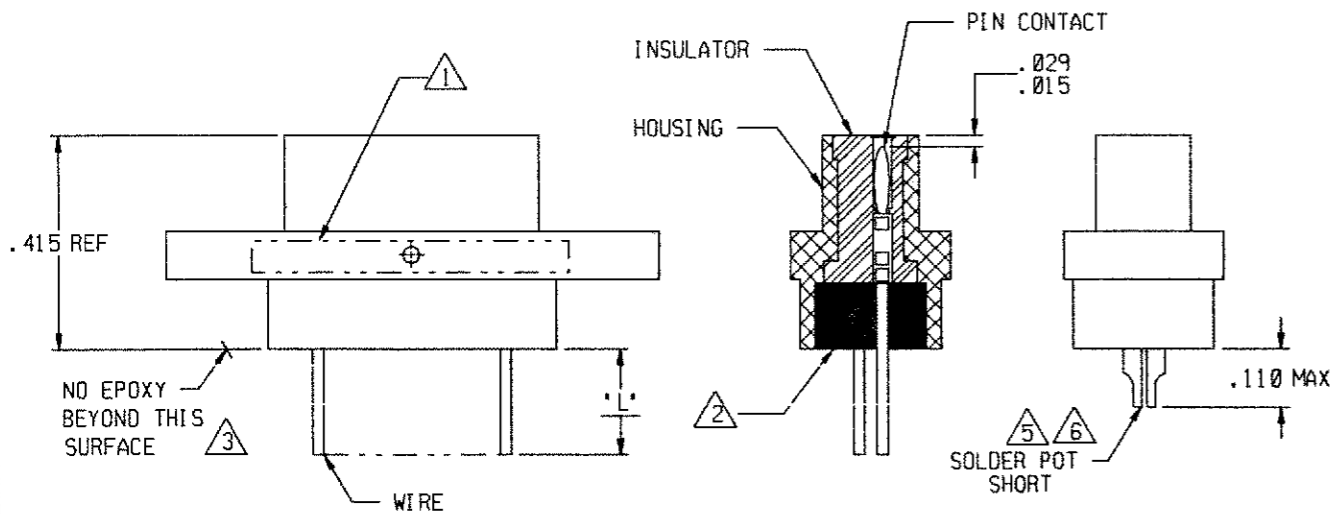
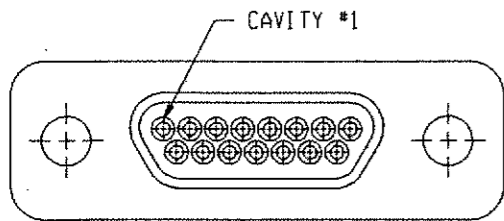
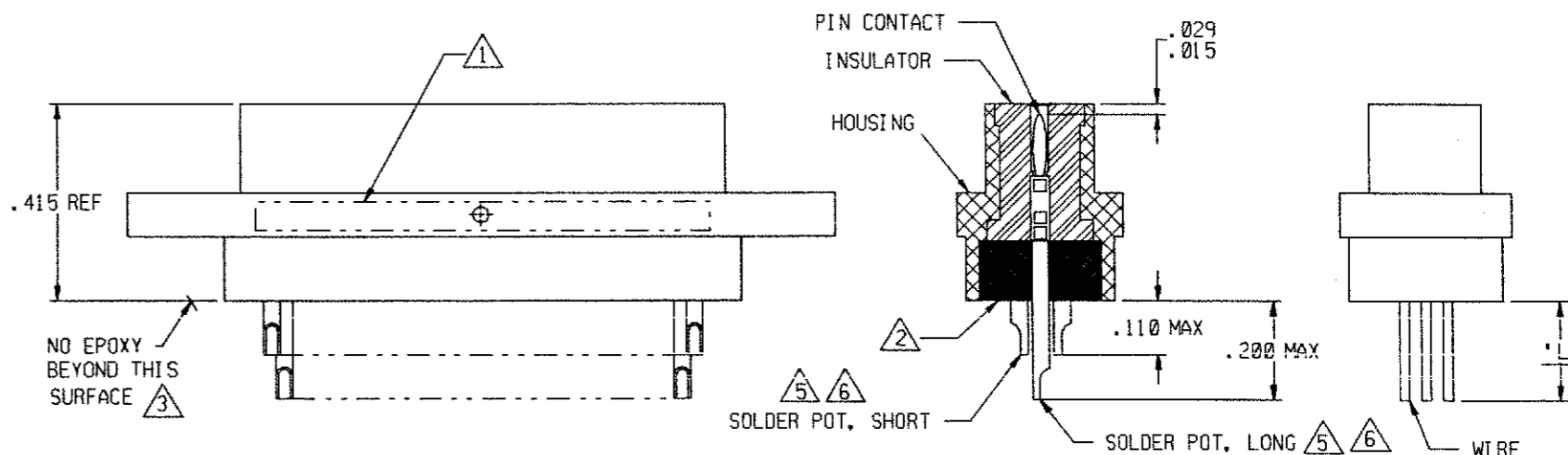
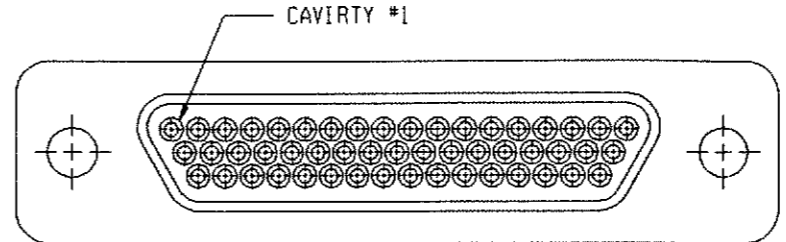


REVISION					
ZONE	LTR	ECN	DESCRIPTION	DATE	APPROVED
	C1		REVISED PER ECO-11-005139	28MAR11	HMR



**9 THRU 37 CONFIGURATION**

(SHOWN WITH WIRE TERMINATIONS FOR REFERENCE ONLY.  
SOLDER POT TERMINATIONS ARE THE SAME CONFIGURATION)




**51 CONFIGURATION**

(SHOWN WITH SOLDER POT TERMINATIONS FOR REFERENCE ONLY.  
WIRE TERMINATIONS ARE THE SAME CONFIGURATION)

NOTES: UNLESS OTHERWISE SPECIFIED.

- 1 MARK PER TIS.
- 2 EPOXY AS SHOWN USE 194-8102-6215/6225.
- 3 EPOXY WICKING: UNINSULATED WIRE: .050 MAX  
INSULATED WIRE UPTO #25 AWG: .125 MAX  
INSULATED WIRE UPTO #24 AWG OR LARGER: .200 MAX
- 4. CRIMP LEADS INTO CONTACTS PER MEP302-05.
- 5 NO SCRATCHES SHOWING BASE METAL PERMITTED ON SOLDER POTS.
- 6 CHAMFER ON SOLDER POTS ARE TO BE PARALLEL WITH SIDES OF CONNECTOR WITHIN 10°.

TE CONNECTIVITY 7-1532141-2  
Micro P/N 094-0000-0011

UNLESS OTHERWISE SPECIFIED DIMENSIONS ARE IN INCHES. TOLERANCE ARE: FRACTIONS ± 1/8 DECIMALS .XX ± .01 .XXX ± .005 ANGLES ± 2°	APPROVALS		 TE Connectivity METAL SHELL "D" CONNECTOR PLUG, PER MIL-PRF-83513 SIZE 9 THRU 51	PROD CODE
	SIGNATURE	DATE		845
	DRAWN BY			CODE
	P.E.			M
MATERIAL:				
FINISH:				
			SIZE CODE IDENT NO. DRAWING NO.	
			B 98278 7-1532141-2	
			SCALE: NONE	SHEET 1 OF 1