

THIS DRAWING IS UNPUBLISHED.

RELEASED FOR PUBLICATION

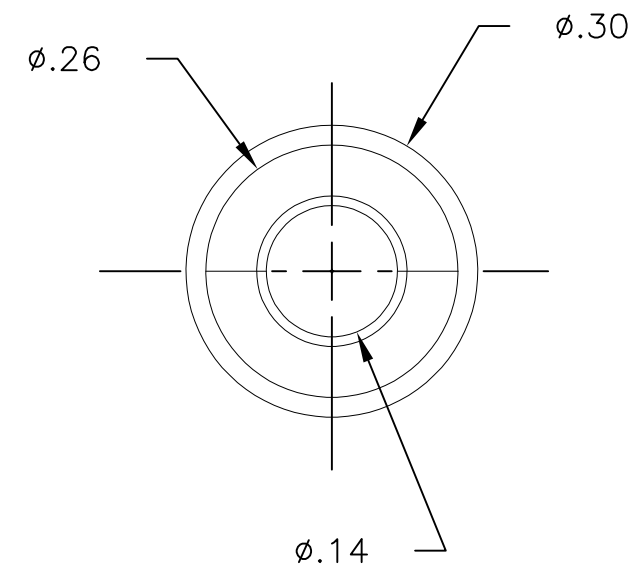
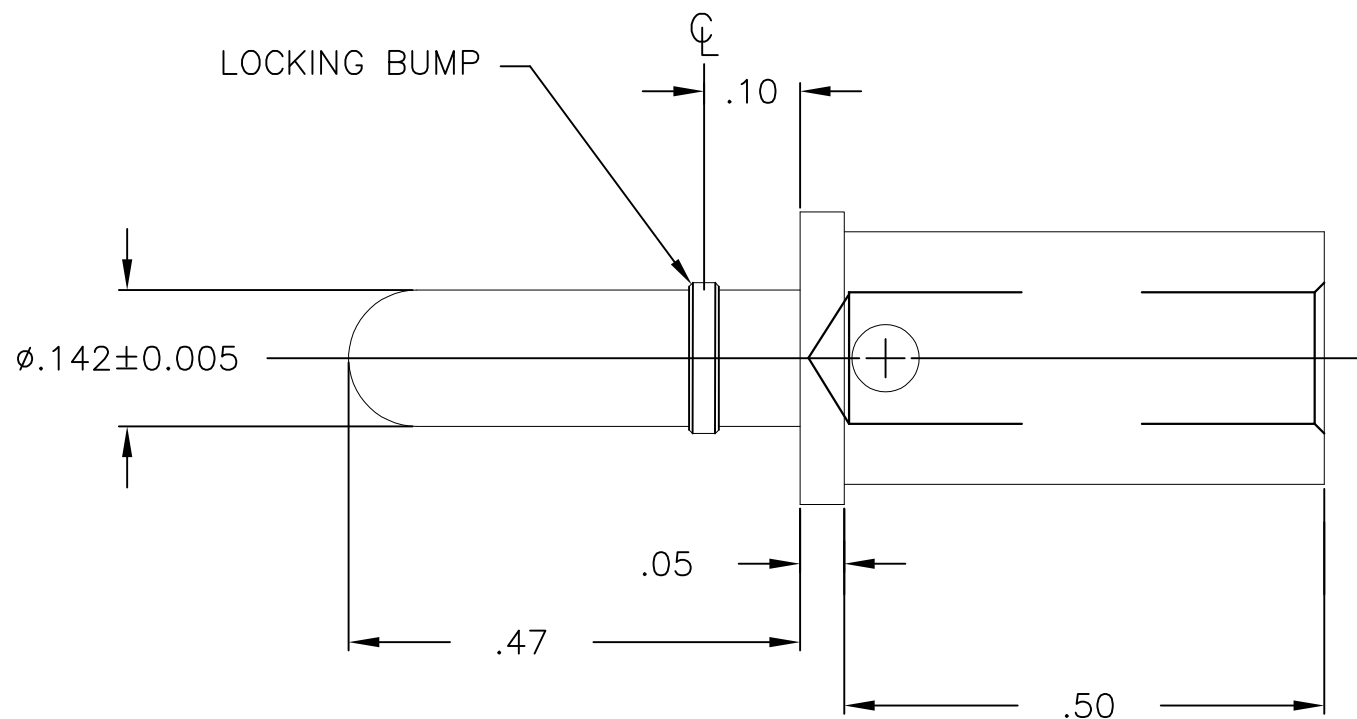
© COPYRIGHT - By -

ALL RIGHTS RESERVED.

LOC GP DIST 00

REVISIONS

P	LTR	DESCRIPTION	DATE	DWN	APVD
	C	REV PER ECO-11-007264	14APR2011	RG	DO



- 5. TOOLING REQUIRED FOR CRIMP CONTACTS SIZE #8 & #10:  
 CRIMP TOOL PART No. M22520/23-01  
 CRIMP DIE ASSEMBLY PART No. M22520/23-02  
 LOCATOR PART No. M22520/23-09


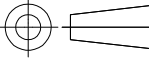
4. FINISH: SILVER PLATE .00200 MIN THK. OVER NICKEL .000040 MIN THK.

3. MATERIAL: COPPER ALLOY

2. ITEMS PROVIDED TO THIS SPECIFICATION TO BE IDENTIFIED ON THE CONTAINER WITH THE FOLLOWING INFORMATION: PART NUMBER AND DATE CODE OF MANUFACTURE.

1. PART NUMBER CHANGES AND/OR DESIGN CHANGES AFFECTING ITEM INTERCHANGEABILITY REQUIRE PRIOR ELCON APPROVAL AND AUTHORIZATION BY REVISION TO THIS DRAWING.

1766161-1  
PART NUMBER

THIS DRAWING IS A CONTROLLED DOCUMENT.		DWN 10JAN2011 LOVATO/GRZYBOWSKI	 TE Connectivity		
DIMENSIONS: INCHES		CHK 10JAN2011 D.ORRIS			
		APVD 10JAN2011 D.ORRIS	NAME PIN CONTACT SIZE No.8 SIZE No.10 CRIMP BARREL LOCKING ICCON		
TOLERANCES UNLESS OTHERWISE SPECIFIED:		PRODUCT SPEC	RESTRICTED TO		
0 PLC ± - 1 PLC ± - 2 PLC ± - 3 PLC ± .020 4 PLC ± - ANGLES ± .5		APPLICATION SPEC	SIZE	CAGE CODE	DRAWING NO
MATERIAL		WEIGHT	A3	00779	C-1766161
FINISH		CUSTOMER DRAWING		SCALE 5:1	SHEET 1 OF 1
				REV C	