



4.5 dBi MultiBand Rubber Duck Portable Antenna 615-4200 MHz SMA Connector

Antennas Technical Data Sheet

PE51RD1031

Features

- 0 to 4 dBi Gain
- Tilt and Swivel Design
- SMA Male Connector
- Blade Design

Applications

- Infotainment Systems, Routers, WiFi Hotspots, HD Video Transmission, Gateways, Dash Cameras, Public Transportation
- Connected Cars or Self-Driving Cars, Fleet Management, Logistics
- 4G & 5G Networks
- 600, 700, 800, 850, 900, 1800, 1900, 2100, 2600, 3500 MHz Bands
- IoT, Cellular, Zigbee, Z-Wave, Bluetooth, CBRS, WiFi, C-Band

Description

The 5G Pasternack PE51RD1031 Rubber Duck Antenna is a high performance omnidirectional “rubber-duck” antenna. Designed for 615 MHz to 4200 MHz bands, it is in stock and can ship same day. It features a tilt-and-swivel SMA-Plug (male) connector, allowing them to be used at a right angle, vertically or any angle in-between. It is a coaxial sleeve design with an omni-directional pattern. The PE51RD1031 is ideally suited 4G, 5G, LTE, CBRS bands.

The Pasternack high performance rubber-duck PE51RD1031 is a flexible antenna providing broad coverage and 1-4 dBi gain. This SMA male rubber duck is suitable for commercial radios in public and private 5G and Cellular networks that are equipped with SMA female connectors. Pasternack’s PE51RD1031 from Pasternack supports 600, 700, 800, 850, 900, 1800, 2100, 2400, 2600, and 3500 MHz bands.

This 5G 615 MHz to 4200 MHz rubber duck antenna with a SMA male connector just like the other RF components from Pasternack is in stock and ships the same day. Contact our knowledgeable and friendly technical support and sales staff for your answers on any Pasternack products.

Configuration

Design	Portable
Band Type	Multi
Radiation Pattern	Omni Directional
Polarization	Vertical
Connector Type	SMA Male

Electrical Specifications

Description	Minimum	Typical	Maximum	Units
Frequency Range	615		4.2	MHz
Input VSWR			3:1	
Impedance		50		Ohms
Gain	3	4.5		dBi

Specifications by Band

Description	Band 1	Band 2	Band 3	Band 4	Band 5	Units
Range	615-960	1,400-2,700	3,300-4,200			MHz
Gain	3	4.5	2			dBi

Click the following link (or enter part number in “SEARCH” on website) to obtain additional part information including price, inventory and certifications: [4.5 dBi MultiBand Rubber Duck Portable Antenna 615-4200 MHz SMA Connector PE51RD1031](#)



4.5 dBi MultiBand Rubber Duck Portable
Antenna 615-4200 MHz SMA Connector

Antennas Technical Data Sheet

PE51RD1031

Mechanical Specifications

Radome Material	ABS
Width	0.79 in [20.07 mm]
Height	5.33 in [135.38 mm]

Connectors

Description	Connector 1	Connector 2	Connector 3
Body Material and Plating	Brass		

Environmental Specifications

Temperature

Operating Range	-20 to +65 deg C
Storage Range	-20 to +65 deg C

Compliance Certifications (see [product page](#) for current document)

Plotted and Other Data

Notes:

4.5 dBi MultiBand Rubber Duck Portable Antenna 615-4200 MHz SMA Connector from Pasternack Enterprises has same day shipment for domestic and International orders. Our RF, microwave and millimeter wave products maintain a 99.4% availability and are part of the broadest selection in the industry.

Click the following link (or enter part number in "SEARCH" on website) to obtain additional part information including price, inventory and certifications: [4.5 dBi MultiBand Rubber Duck Portable Antenna 615-4200 MHz SMA Connector PE51RD1031](#)

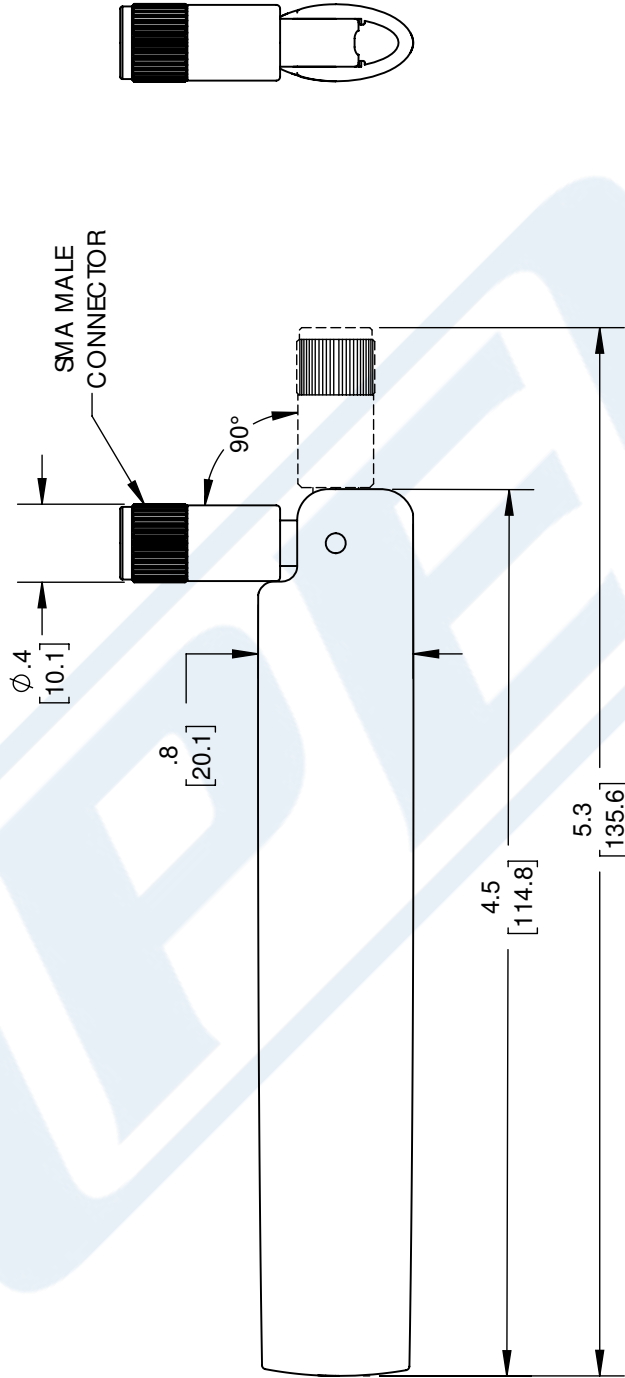
URL: <https://www.pasternack.com/multi-antenna-615-mhz-4.2-ghz-4.5-dbi-gain-sma-pe51rd1031-p.aspx>

The information contained in this document is accurate to the best of our knowledge and representative of the part described herein. It may be necessary to make modifications to the part and/or the documentation of the part, in order to implement improvements. Pasternack reserves the right to make such changes as required. Unless otherwise stated, all specifications are nominal. Pasternack does not make any representation or warranty regarding the suitability of the part described herein for any particular purpose, and Pasternack does not assume any liability arising out of the use of any part or documentation.

PE51RD1031 CAD Drawing

4.5 dBi MultiBand Rubber Duck Portable Antenna 615-4200 MHz SMA Connector

REVISIONS			
REV.	DESCRIPTION	DATE	APPROVED
A	INITIAL RELEASE	10/08/2020	KHIETPAS



UNLESS OTHERWISE SPECIFIED LEADING DIMENSIONS ARE INCHES DIMENSIONS IN [] ARE MILLIMETERS

TOLERANCES:
 .X = ±.2 [5.08] FRACTIONS ± 1/32
 .XX = ±.02 [.51] ANGLES ± 1°
 .XXX = ±.005 [.13]

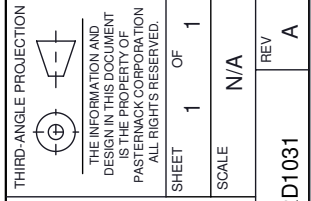
CABLE LENGTH (L), TOLERANCES:
 L ≤ 12 [305] = +1 [25] / -0
 12 [305] < L ≤ 60 [1524] = +2 [51] / -0
 60 [1524] < L ≤ 120 [3048] = +4 [102] / -0
 120 [3048] < L ≤ 300 [7620] = +6 [152] / -0
 300 [7620] < L = +5% / -0

ALL DIMENSIONS SHOWN ARE FOR REFERENCE ONLY.

PE PASTERNAK
an INFINITI® brand

Pasternack Enterprises, Inc.
P. O. Box 16759, Irvine, CA 92623.
Phone: 1.949.261.1920 | 1.866.727.8376
Fax: 1.949.261.7451
Website: www.pasternack.com
E-mail: sales@pasternack.com

SIZE A CAGE CODE 53919 DRAWN BY BPUCHASKI ITEM NO. PE51RD1031 REV A
 SCALE N/A SHEET 1 OF 1



THESE COMMODITIES, TECHNOLOGY OR SOFTWARE WERE EXPORTED FROM THE UNITED STATES IN ACCORDANCE WITH THE EXPORT ADMINISTRATION REGULATIONS. DIVERSION CONTRARY TO U.S. LAW PROHIBITED.