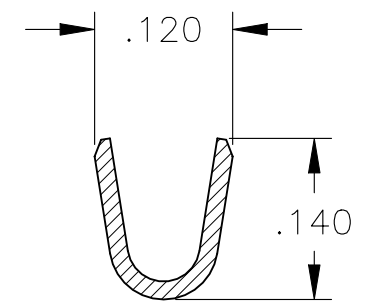
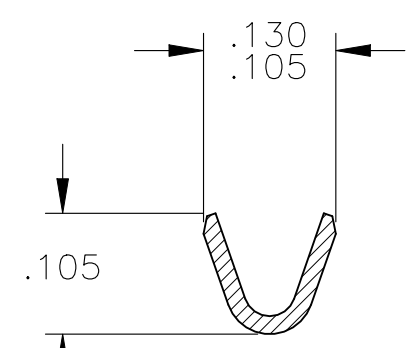
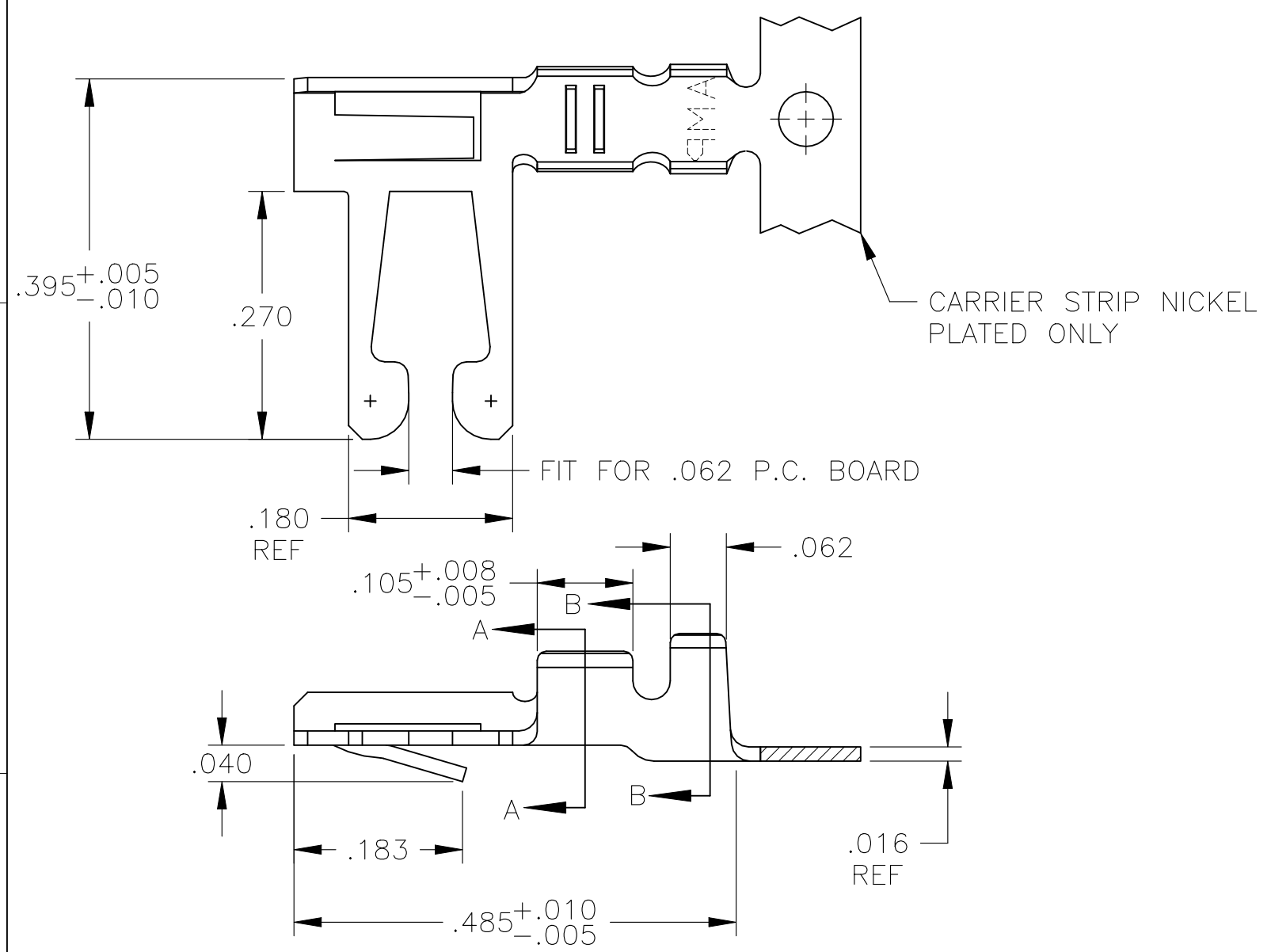


| REVISIONS | | | | | |
|-----------|-----|---------------|-----------|-----|------|
| P | LTR | DESCRIPTION | DATE | DWN | APVD |
| | L2 | ECN-22-171534 | 30AUG2022 | RK | JO |



- REFER TO CUSTOMER 582370 SERIES AND CUSTOMER 582380 SERIES FOR HOUSING AND P.C. BOARD REQUIREMENTS
- .000015 GOLD OVER .000050 NICKEL IN CONTACT AREA. REMAINDER OF CONTACT .000050 NICKEL.
- .000030 GOLD OVER .000050 NICKEL IN CONTACT AREA. .000050 NICKEL ON REMAINDER OF CONTACT.
- L-R FEED FOR MINI-APPL.
- OBSOLETE PARTS: OBSOLETE CIS STREAMLINING PER D.RENAUD/D.SINISI

| | | | | |
|---|----------|-----------------|---|-------------|
| | | MATTE TIN PLATE | 4 | 530002-8 |
| 5 | OBSOLETE | 2 | 4 | 530002-7 |
| | OBSOLETE | 3 | 4 | 530002-6 |
| | OBSOLETE | TIN PLATE | 4 | 530002-5 |
| | OBSOLETE | 2 | | 530002-4 |
| | | 3 | | 530002-3 |
| | OBSOLETE | TIN PLATE | | 530002-2 |
| | | FINISH | | PART NUMBER |

| | | | | | |
|--|--|-----------------------------|--|--------------------|------------------------|
| THIS DRAWING IS A CONTROLLED DOCUMENT. | | DWN M.BINNER 03APR01 | TE Connectivity | | |
| | | CHK M.MILLER 05APR01 | | | |
| DIMENSIONS: INCHES | | APVD M.MILLER 05APR01 | NAME CONTACT, 22-18 AWG, DUO-TYNE FLAG WITH TAPERED BEAMS | | |
| | | PRODUCT SPEC | RESTRICTED TO | | |
| TOLERANCES UNLESS OTHERWISE SPECIFIED: | | APPLICATION SPEC | SIZE A3 | CAGE CODE 00779 | DRAWING NO C-530002 |
| 0 PLC ± - 1 PLC ± - 2 PLC ± - 3 PLC ± .005 4 PLC ± .0005 ANGLES ± - | | WEIGHT - | SCALE 6:1 | SHEET 1 OF 1 | REV L2 |
| MATERIAL PHOS. BRONZE | | FINISH SEE TABLE | CUSTOMER DRAWING | | |