

NOTES:

1. MATERIALS AND FINISHES:

- BODY - BRASS, GOLD PLATING, .000030 [0.8] THICK OVER NICKEL
- CONTACT - GOLD, GOLD PLATING, .000030 [0.8] THICK OVER NICKEL
- INSULATOR - LCP
- CAP - PTFE

2. ELECTRICAL:

- A. IMPEDANCE: 50 OHM
- B. FREQUENCY RANGE: DC - 18 GHz
- C. VSWR(RETURN LOSS): 1.10 (26.4 dB), MAX. DC-6GHz
1.15 (23.1 dB), MAX. 6-10GHz
1.30 (17.7 dB), MAX. 10-18GHz
- D. DIELECTRIC WITHSTANDING VOLTAGE: 335 VRMS, MIN.

3. PHYSICAL:

- A. DURABILITY: 500 CYCLES MIN.
- B. ENGAGEMENT FORCE: 10 LB MAX
- C. DISENGAGEMENT FORCE: 2 LB MIN
- D. INNER CONTACT RETENTION FORCE: 1.5 LB MIN
- E. TEMPERATURE RANGE: -65° C TO 165° C

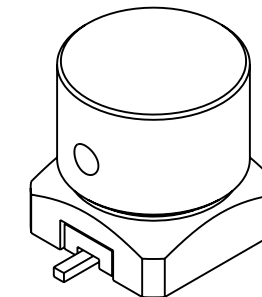
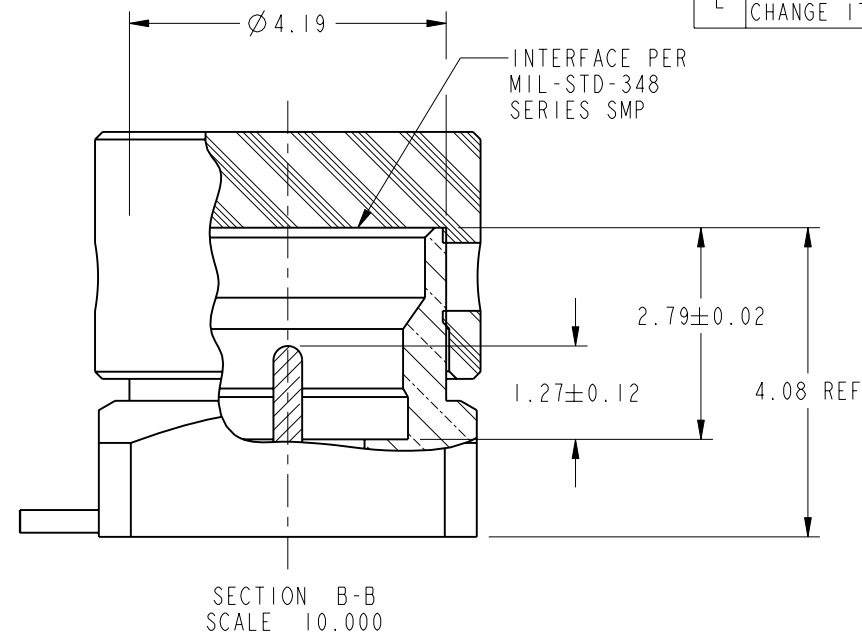
4. PACKAGING:

- A. PACKAGE CONNECTOR IN TAPE AND REEL.
- B. MARKING: "AMPHENOL RF, SMP-MSLD-PCS-T, AND DATE CODE"
- C. INCLUDE AN ADDITIONAL LABEL ON THE BOX TO IDENTIFY THE PART AS VC. THE LABEL SHALL BE MARKED: VC. THE SIZE OF LABEL SHALL BE 63X38 MM AND TO BE LOCATED EITHER ON TOP OR ON THE SIDES OF THE BOX.

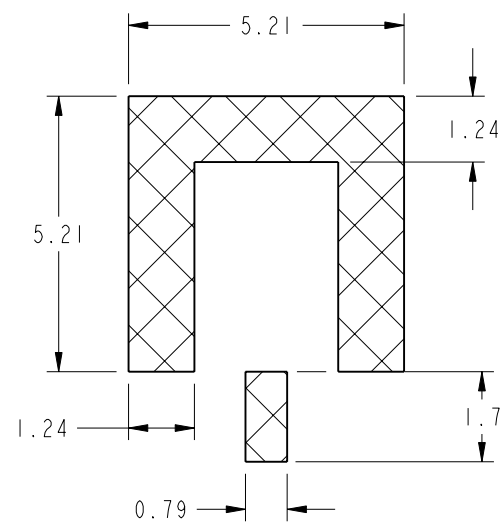
THIRD ANGLE PROJ.

REVISIONS

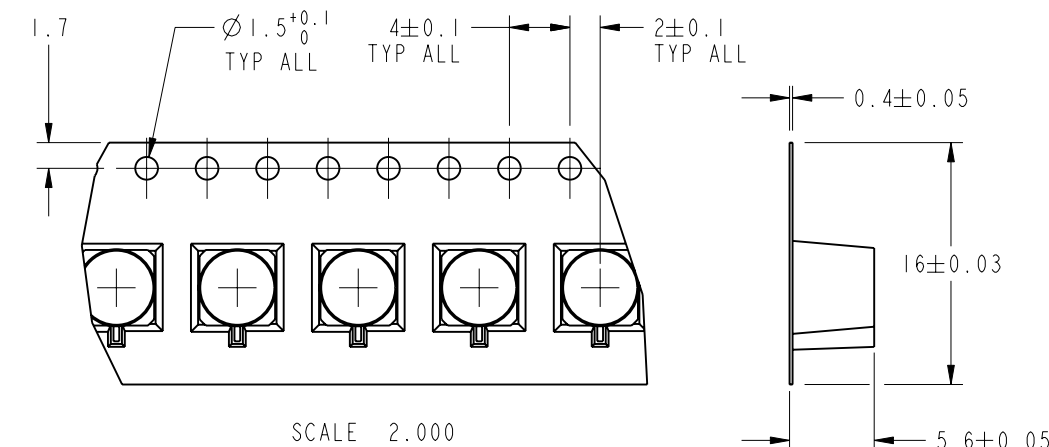
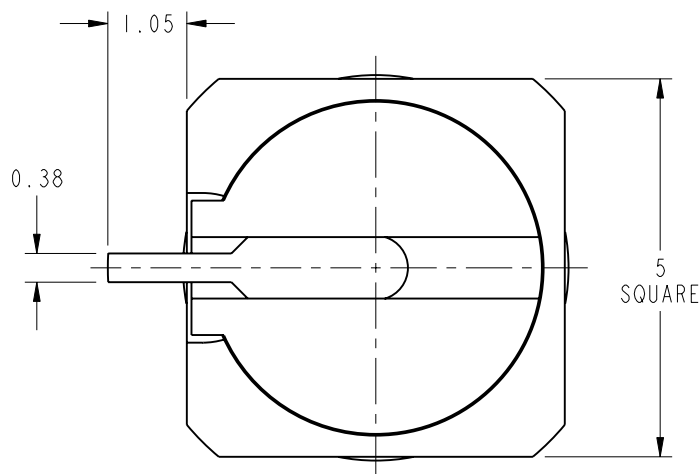
REV	DESCRIPTION	DATE	ECO	APPR
A	RELEASE TO MFG.	16-Apr-07	46508	CW
B	SEE SHEET 1	05-Sep-09	47481	Agela
C	ADD NOTE 4	15-Apr-13	49440	MJD
D	1.27±0.12 WAS 1.3±0.12, MB37AAB02 WAS 940-10020, 940-10019; BD37ACB01 WAS 940-10036 \RD-DMI3091001J8	24-Sep-13	49741	MD
E	REMOVE SPECIAL HARRIS LABEL FROM THE DRAWING AND CHANGE IT TO OUR STANDARD LABELING. \RD-DMI5010701R3	21-Jan-15	50188	RM



SCALE 5.000



RECOMMENDED PCB FOOTPRINT
SCALE 7.000



SCALE 2.000

CUSTOMER OUTLINE DRAWING
ALL OTHER SHEETS ARE FOR INTERNAL USE ONLY

<p>UNLESS OTHERWISE SPECIFIED, DIMENSIONS ARE IN METRIC AND TOLERANCES ARE: <0.5mm ±0.05mm 0.5 - 6mm ±0.1mm 6 - 30mm ±0.2mm 30 - 120mm ±0.3mm ANGLES ±1°</p> <p>NOTICE - These drawings, specifications, or other data (1) are, and remain the property of Amphenol corp. (2) must be returned upon request; and (3) are confidential and not to be disclosed to any person other than those to whom they are given by Amphenol Corp. the furnishing of these drawings, specifications, or other data by Amphenol Corp., or to any other person to anyone for any purpose is not to be regarded by implication or otherwise in any manner licensing, granting rights to permitting such holder or any other person to manufacture, use or sell any product, process or design, patented or otherwise, that may in any way be related to or disclosed by said drawings, specifications, or other data.</p>	MATERIAL	DRAWN	DATE	<p>TITLE SMP MALE SMT LIMITED DETENT IN TAPE AND REEL</p> <p>SCALE: 7.0:1.0 SHEET 2 OF 2</p>		<p>Amphenol RF www.amphenolrf.com</p>	
	SEE NOTES	R. MAO	21-Jan-15				
REFERENCE	APPROVED	DATE	DWG SIZE		REV	DRAWING NO. SMP-MSLD-PCS-T	
EAR # 2279 AND 615X-1782	S. HSIEH	21-Jan-15	B			E	ITEM NO. SMP-MSLD-PCS-T
CONFIGURATION LEVEL: <input type="checkbox"/> <input type="checkbox"/> <input type="checkbox"/>	FINISH	CAD FILE				PART NO. SMP-MSLD-PCS-T	