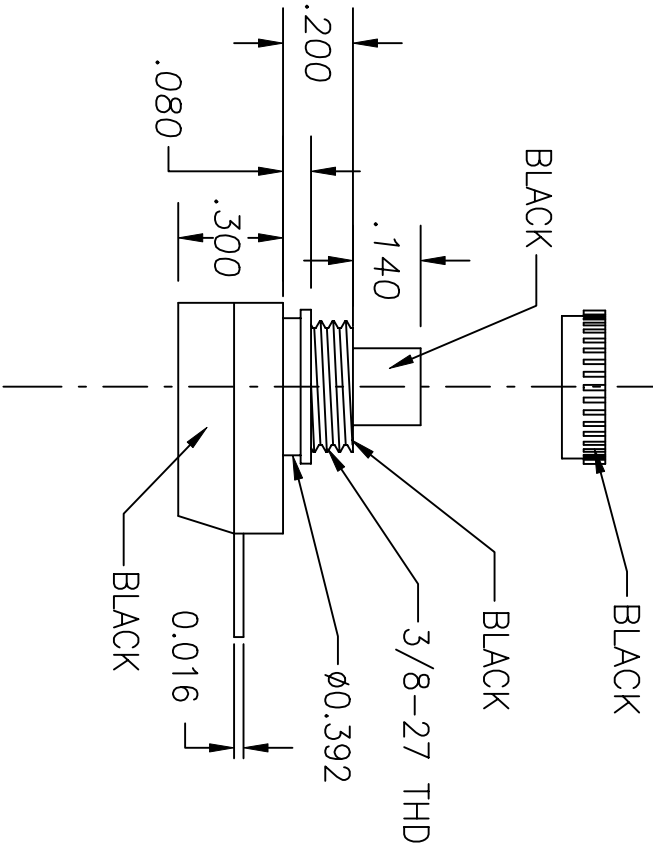
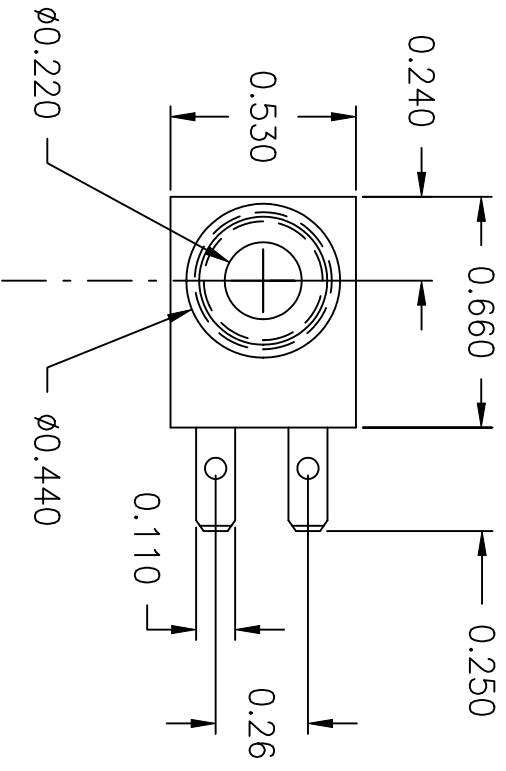
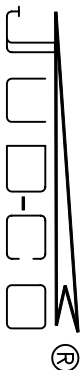


LTR	EN	DESCRIPTION	APPR	BY	DATE
A	-	INITIAL RELEASE	RB	NH	9-15-06



JUDCO INVENTORY NO:40-4528-00
 SWITCH TYPE: PUSH ON-PUSH OFF, SPST
 ELECTRICAL RATINGS: 125VAC 3A
 TEMPERATURE RATING: 85°C
 NUT PACKED SEPARATELY

CUSTOMER :DIGIKEY
 APPROVED BY: _____
 DATE: _____

DIMENSIONS IN INCHES DIMENSIONS ARE REFERENCE		 HARBOR CITY CALIFORNIA
DRAWN: NH	9-15-06	
APPR: KJ	9-15-06	TITLE J-188B-1 ULDC W/STRAIGHT TERMINALS DWG. NO. 1415-1025 SHEET 1 OF 1
1415U1025A.DWG		

This document embodies a product, component, and/or design proprietary to JUDCO MANUFACTURING INC., and which is protected either as a trade secret, by U.S. Patent, or by copyright. It may not be used in any way without written express consent of JUDCO MANUFACTURING INC.