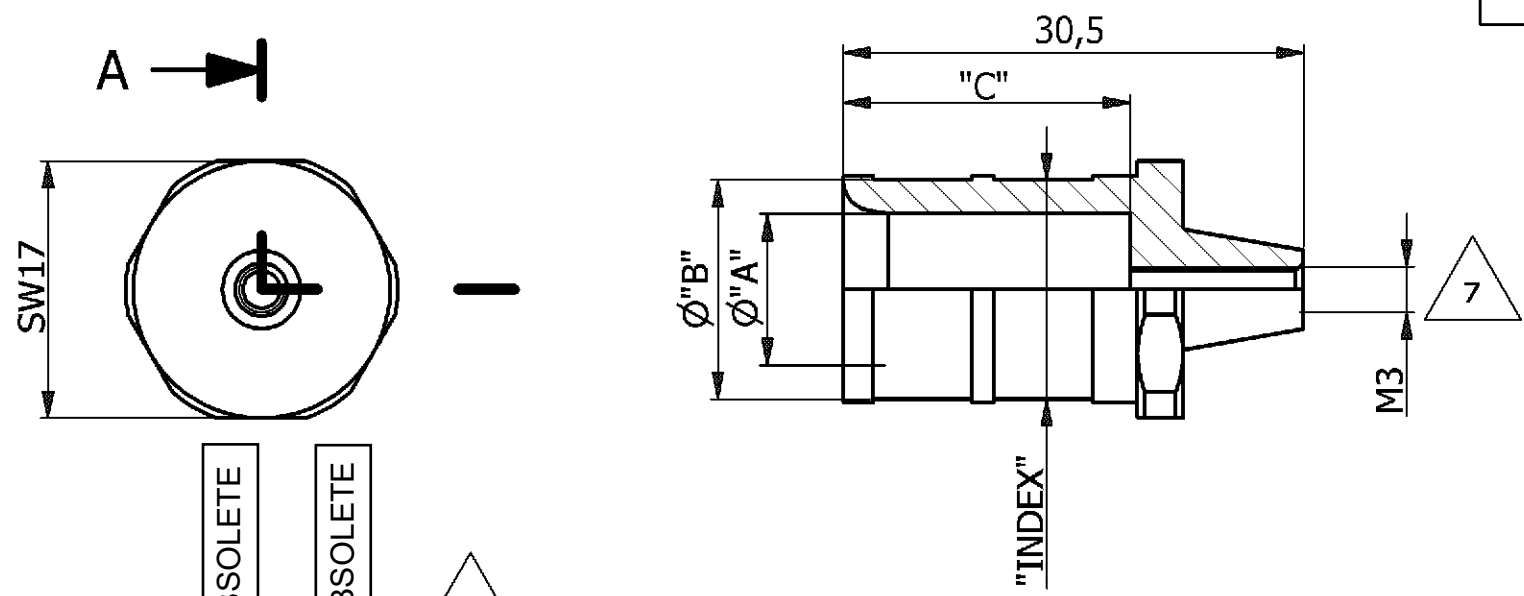


THIS DRAWING IS UNPUBLISHED VERTRÄULICHE UNVERÖFFENTLICHE ZEICHNUNG		RELEASE FOR PUBLIKATION FREI FUER VERÖFFENTLICHUNG		MATED WITH: PASSEND ZU:		LOC		DIST		REVISIONS ÄNDERUNGEN					
BY AMP INCORPORATED		ALL RIGHTS RESERVED ALLE RECHTE VORBEHALTEN		1110948, 1110949		AI		-		P	LTR	DESCRIPTION BESCHREIBUNG	DATE	DWN	APVD
COPYRIGHT 2000						PROJEKT NR. B901815		B4		ECR-21-123594		03FEB2022		RK	JB



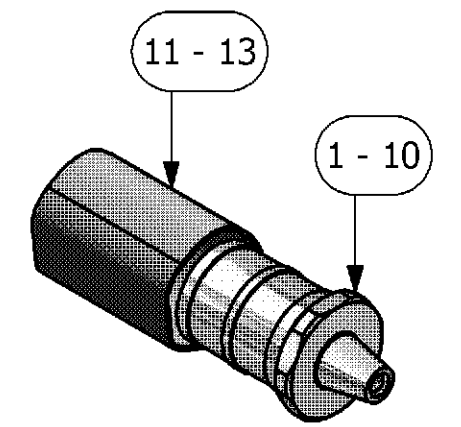
NOTES

- 1 SUITABLE CONTACTS: SERIES HF06
CUSTOMER DRAWING: 11100948, 1110949
- 2 SUITABLE CONTACTS: SERIES HF08
CUSTOMER DRAWING: 1103037, 1103038
- 3 SUITABLE CRIMPING TOOL: HYDR. TOOL 30kN
CUSTOMER DRAWING: 1105653
- 4 SUITABLE CRIMPING TOOL: HYDR. TOOLS 60kN
CUSTOMER DRAWING: 1110956
- 5 DIE SIZE "INDEX" ACC. TO DIN 48083, SEE
CUSTOMER DRAWINGS OF CRIMPING TOOLS
- 6 SHRINK. TUBE ACC. TO MIL I-23053 B/5, RATE 3:1
- 7 STANDARDS:
DIN EN 61984; DIN EN 60664-1
- 8 PACKAGING:
10 SETS IN A CARTON

OBSOLETE

OBSOLETE

PART NO. / QUANTITY										INDEX ACC.	A	B	C	MATERIAL	SURFACE	WEIGHT [kg]	NOTE	ITEM
-	-	-	1	-	1	-	1	-	-	-	-	-	-	PO	BLACK	0,004	18 / 45	14
1	1	1	-	1	-	1	-	-	-	-	-	-	-	PO	BLACK	0,003	18 / 25	13
-	-	-	-	-	-	-	-	1	1	-	-	-	-	PO	BLACK	0,002	12 / 25	12
1	-	-	-	-	-	-	-	-	-	14	11,5	14,0	19	COPPER	SILVER PLATED	0,018	WIRE SIZE 50 MM ³	11
-	1	-	-	-	-	-	-	-	-	16	11,8	16,5	19	COPPER	SILVER PLATED	0,027	WIRE SIZE 70 MM ³	10
-	-	1	-	-	-	-	-	-	-	14	10,0	14,5	19	COPPER	SILVER PLATED	0,024	WIRE SIZE 50 MM ³	9
-	-	-	1	-	-	-	-	-	-	14	9,8	14,5	19	COPPER	SILVER PLATED	0,025	WIRE SIZE 48 MM ³	8
-	-	-	-	1	-	-	-	-	-	12	8,2	12,5	19	COPPER	SILVER PLATED	0,021	WIRE SIZE 35 MM ³	7
-	-	-	-	-	1	-	-	-	-	12	8,5	12,5	19	COPPER	SILVER PLATED	0,020	WIRE SIZE 30 MM ³	6
-	-	-	-	-	-	1	-	-	-	10	7,0	10,0	19	COPPER	SILVER PLATED	0,016	WIRE SIZE 25 MM ³	5
-	-	-	-	-	-	-	1	-	-	8	5,9	8,5	19	COPPER	SILVER PLATED	0,014	WIRE SIZE 18 MM ³	4
-	-	-	-	-	-	-	-	1	-	8	5,5	8,5	19	COPPER	SILVER PLATED	0,015	WIRE SIZE 16 MM ³	3
-	-	-	-	-	-	-	-	-	1	6	4,5	6,0	19	COPPER	SILVER PLATED	0,011	WIRE SIZE 10 MM ³	2
-	-	-	-	-	-	-	-	-	-	5	3,8	5,5	19	COPPER	SILVER PLATED	0,010	WIRE SIZE 06 MM ³	1



M 1:1

1-1	1-0	0-9	0-8	0-7	0-6	0-5	0-4	0-3	0-2	0-1	DESCRIPTION	INDEX ACC. TO DIN 48083	DIMENSIONS	MATERIAL	SURFACE	WEIGHT	NOTE	ITEM	
											ORDERING TEXT: CH.6.MM ² -6MM		WIRE: H07V-K 1x6MM ²						
											ORDERING TEXT: CH.10.MM ² -6MM		WIRE: H07V-K 1x10MM ²						
											ORDERING TEXT: CH.16.MM ² -6MM		WIRE: H07V-K 1x16MM ²						
											ORDERING TEXT: CH.18.MM ² -6MM		WIRE: RADOX 155, ZYRAD 555, BETATHERM 155 3x6MM ²						
											ORDERING TEXT: CH.25.MM ² -6MM		WIRE: H07V-K 1x25MM ²						
											ORDERING TEXT: CH.30.MM ² -6MM		WIRE: RADOX 155, ZYRAD 555, BETATHERM 155 3x10MM ²						
											ORDERING TEXT: CH.35.MM ² -6MM		WIRE: LAPP H07V-K, H07V-K UL STYLE 1015, CSA, TEW 1x35MM ²						
											ORDERING TEXT: CH.48.MM ² -6MM		WIRE: RADOX 155, ZYRAD 555, BETATHERM 155 3x16MM ²						
											ORDERING TEXT: CH.50.MM ² -6MM		WIRE: LAPP H07V-K, H07V-K UL STYLE 1015, CSA, TEW 1x50MM ²						
											ORDERING TEXT: CH.70.MM ² -6MM		WIRE: LAPP H07V-K, H07V-K UL STYLE 1015, CSA, TEW 1x70MM ² , 2x35MM ²						
											ORDERING TEXT: CH.50H.MM ² -6MM		WIRE: HIGH FLEX. WIRE ACC. TO DIN 46438						

THIS DRAWING IS A CONTROLLED DOCUMENT FOR AMP INCORPORATED. IT IS SUBJECT TO CHANGE AND THE CONTROLLING ENGINEERING ORGANIZATION SHOULD BE CONTACTED FOR THE LATEST REVISION. DIESSES ZEICHNUNGSDOKUMENT WIRD DURCH AMP INCORPORATED KONTROLLIERT. ÄNDERUNGEN, DIE DEM TECHNISCHEN FORTSCHRITT DIENEN, SIND VORBEHALTEN. DEN JEWEILS LETZTIGELTIGEN ÄNDERUNGSSTAND ERFAHREN SIE AUF ANFRAGE.		DWN	H.BRAUN	25.10.2005		TE Connectivity	
DIMENSIONS: DIMENSIONEN: mm		CHK					
TOLERANCES UNLESS OTHERWISE SPECIFIED: ALLGEMEINTOLERANZEN		APVD	T.SCHNURPFEIL	25.10.2005	NAME		
n. ISO 8015 -		PRODUCT SPEC. PRODUKTSPEZ.			CRIMP BARREL		
n. ISO 2768 - mH-E		108-74024			SERIES HF06, HF08		
n. DIN 16901 - 140		APPLICATION SPEC. VERARBEITUNGSSPEZ.	114-74031		SIZE	CAGE CODE	
0 PLC #		WEIGHT GEWICHT	SEE TABLE	A3	00779	DRAWING NO ZEICHNUNGS-NR.	
1 PLC #		CUSTOMER DRAWING / KUNDENZEICHNUNG		SCALE MASSSTAB		2:1	
2 PLC #				SHEET BLATT		1	
3 PLC #				OF VON		1	
ANGLES / WINKEL #				REV.		B4	
MATERIAL		FINISH / OBERFLAECHE / FARBE		RESTRICTED TO NUR FUER			