

Description: 1608 2.4G&5GHz Diplexer

PART NUMBER: DPX1608LL80R2455A

Features:

- Compact size : 1.6x0.8x0.6mm
- RoHS compliant

Applications:

- WLAN, 802.11a/b/g/n
- ISM Band

ELECTRICAL SPECIFICATIONS

| DESCRIPTION | VALUE | |
|-----------------------|--|---|
| Pass Band | Low Band | High Band |
| | 2400~2500MHz | 4900~6000MHz |
| Insertion loss | 0.7dB (Max) at 25°C | 0.8dB (Max) at 25°C |
| Return-Loss | 10.0dB(Min) | 12.0dB(Min) |
| Attenuation | 20dB(Min).@4.8~5GHz 20dB(Min).@7.2~7.5GHz | 28dB(Min).@860~960MHz 23dB(Min).@1545~1605MHz 23dB(Min).@1710~1990GHz 28dB(Min).@2.17GHz 8dB(Min).@8.1GHz 15dB(Min).@8.82~9.8GHz 27dB(Min).@9.8~11.8GHz |
| Isolation | Middle Band to High Band: 20dB (Min). @4.9~5.95GHz | |
| Operating Temperature | -40 ~ 85°C | |
| Dimension | 1.6 x 0.8 x 0.6mm | |

In the effort to improve our products, we reserve the right to make changes judged to be necessary.

CONFIDENTIAL AND PROPRIETARY INFORMATION

This document contains confidential and proprietary information of Pulse Electronics, Inc. (Pulse) and is protected by copyright, trade secret and other state and federal laws. Its receipt or possession does not convey any rights to reproduce, disclose its contents, or to manufacture, use or sell anything it may describe. Reproduction, disclosure or use without specific written authorization of Pulse is strictly forbidden.

For more information:



Pulse Worldwide Headquarters
15255 Innovation Drive #100
San Diego, CA 92128
USA
Tel:1-858-674-8100

Pulse/Larsen Antennas
18110 SE 34th St Bldg 2 Suite 250
Vancouver, WA 98683
USA
Tel: 1-360-944-7551

Europe Headquarters
Pulse GmbH & Do, KG
Zeppelinstrasse 15
Herrenberg, Germany
Tel: 49 7032 7806 0

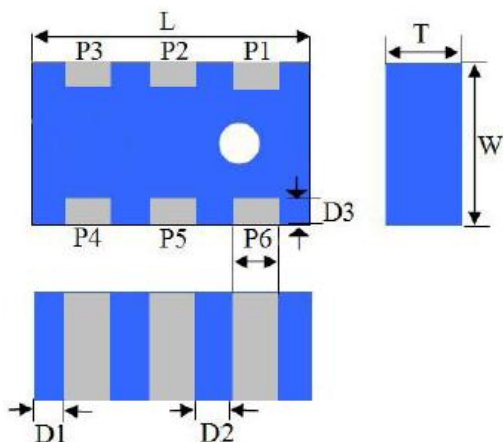
Pulse (Suzhou) Wireless Products Co, Inc.
99 Huo Ju Road(#29 Bldg,4th Phase
Suzhou New District
Jiangsu Province, Suzhou 215009 PR China
Tel: 86 512 6807 9998

Description: 1608 2.4G&5GHz Diplexer

PART NUMBER: DPX1608LL80R2455A

MECHANICAL DIMENSION

Outline



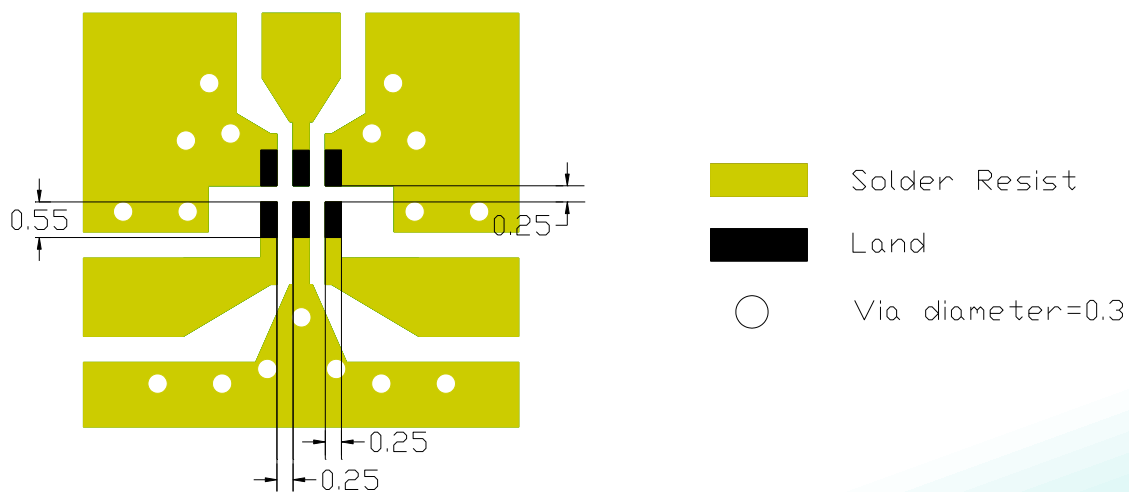
Termination

| Terminal name | Function |
|---------------|-----------|
| P1 | Low band |
| P2 | GND |
| P3 | High band |
| P4 | GND |
| P5 | Common |
| P6 | GND |

Mechanical

| | Dimension |
|---------|-----------|
| L (mm) | 1.60±0.15 |
| W (mm) | 0.80±0.15 |
| T (mm) | 0.60±0.15 |
| P1 (mm) | 0.20±0.15 |
| P2 (mm) | 0.20±0.15 |
| P3 (mm) | 0.20±0.15 |
| P4 (mm) | 0.20±0.15 |
| P5 (mm) | 0.20±0.15 |
| P6 (mm) | 0.20±0.15 |
| D1 (mm) | 0.20±0.15 |
| D2 (mm) | 0.30±0.10 |
| D3 (mm) | 0.15±0.10 |

Reference design of EVB



Line width should be designed to match 50Ω characteristic impedance, depending on PCB material and thickness.

In the effort to improve our products, we reserve the right to make changes judged to be necessary.

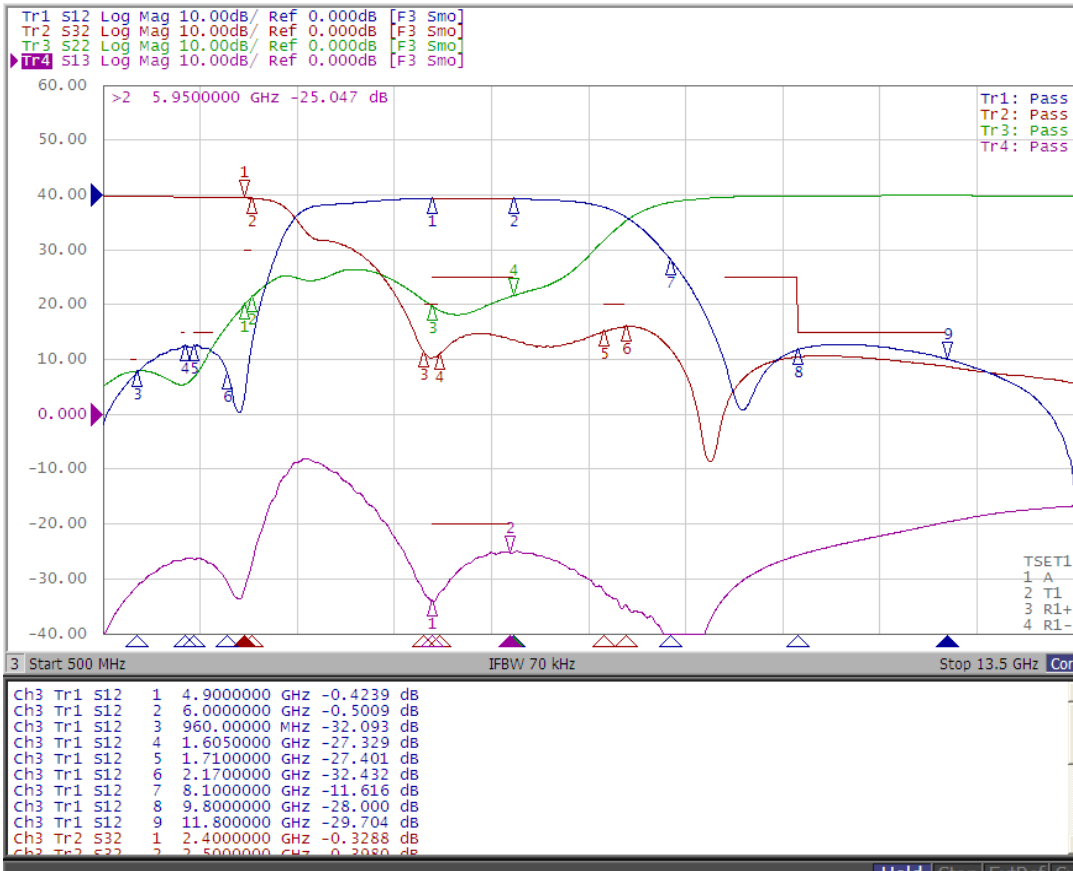
CONFIDENTIAL AND PROPRIETARY INFORMATION

This document contains confidential and proprietary information of Pulse Electronics, Inc. (Pulse) and is protected by copyright, trade secret and other state and federal laws. Its receipt or possession does not convey any rights to reproduce, disclose its contents, or to manufacture, use or sell anything it may describe. Reproduction, disclosure or use without specific written authorization of Pulse is strictly forbidden.

Description: 1608 2.4G&5GHz Diplexer

PART NUMBER: DPX1608LL80R2455A

ELECTRICAL PERFORMANCES



- Measured on Agilent E5071C Network Analyzer
- Port 1, 2 and 3 in Network Analyzer is connected to device as below
- ◆ Port 1 : High band port
- ◆ Port 2 : Common port
- ◆ Port 3 : Low band port
- ◆ S22 : Return loss for low and high band
- ◆ S32 : Insertion loss and attenuation for low band
- ◆ S12 : Insertion loss and attenuation for high band

Frequency Characteristics

In the effort to improve our products, we reserve the right to make changes judged to be necessary.

CONFIDENTIAL AND PROPRIETARY INFORMATION

This document contains confidential and proprietary information of Pulse Electronics, Inc. (Pulse) and is protected by copyright, trade secret and other state and federal laws. Its receipt or possession does not convey any rights to reproduce, disclose its contents, or to manufacture, use or sell anything it may describe. Reproduction, disclosure or use without specific written authorization of Pulse is strictly forbidden.

Description: 1608 2.4G&5GHz Diplexer

PART NUMBER: DPX1608LL80R2455A

REVISION HISTORY

| Revision | Date | Description |
|-----------|---------------|-------------|
| Version 1 | Oct. 06, 2020 | - New issue |