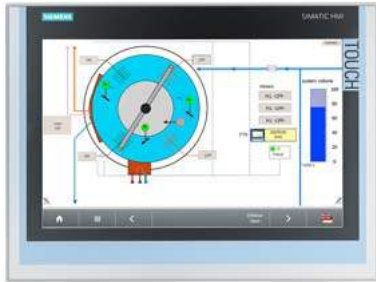


\*\*\* spare part \*\*\* SIMATIC IFP1500 Flat Panel 15" display (16:10), Touch, extended version up to 30 m, 1280x800 pixels, for 24 V DC and 100-240 V AC, DisplayPort/DVI interface incl. DVI/USB cable 1.8 m



General information	
Product type designation	IFP1500
Short designation	Flat Panel 15" touch ext.
Display	
Design of display	TFT widescreen display, LED backlighting
Screen diagonal	15.4 in; 15"
Screen diagonal [cm]	40 cm
Display width	331.2 mm
Display height	207 mm
On Screen Display (OSD) configuration	No; Adjustable by means of software
Number of colors	16 777 216; 24 bit
Viewing angle	170° x 170°
Resolution (pixels)	
<ul style="list-style-type: none"> <li>• Image resolution</li> <li>• Horizontal image resolution</li> <li>• Vertical image resolution</li> <li>• Pixel size, horizontal</li> <li>• Pixel size, vertical</li> </ul>	1 280 x 800 1 280 pixel 800 pixel 0.259 mm 0.259 mm
General features	
<ul style="list-style-type: none"> <li>• Brightness/contrast</li> <li>• Detachable from computer unit</li> <li>• Luminance</li> </ul>	400 cd/m <sup>2</sup> / 1 000:1 5 m 400 cd/m <sup>2</sup>
Backlighting	
<ul style="list-style-type: none"> <li>• Type of backlighting</li> <li>• MTBF backlighting (at 25 °C)</li> <li>• Backlight dimmable</li> </ul>	LED 50 000 h; At 25°C Yes; 0-100 %
Control elements	
Control elements	single-touch screen
Input device	
<ul style="list-style-type: none"> <li>• Integrated mouse cursor control</li> </ul>	No
Touch operation	
<ul style="list-style-type: none"> <li>• Design as touch screen</li> <li>• Monitor keyboard</li> </ul>	Yes; Analog-resistive Yes
Installation type/mounting	
Design	Built-in unit
Front mounting	Yes
Built-in unit	Yes; Portrait mode possible
maximum permitted forward tilt angle from vertical	35°
maximum permitted backward tilt angle from vertical	35°

Supply voltage	
Type of supply voltage	AC/DC
Rated value (DC)	24 V
permissible range, lower limit (DC)	19.2 V
permissible range, upper limit (DC)	28.8 V
Rated value (AC)	100 V; Up to 240V, 50/60 Hz
permissible range, lower limit (AC)	90 V
permissible range, upper limit (AC)	264 V
Power loss	
Power loss, typ.	40 W
Power loss, max.	65 W
Interfaces	
USB on the rear	Yes; 2x onboard
Connection for keyboard/mouse	USB
Video interfaces	
<ul style="list-style-type: none"> <li>DVI-D</li> </ul>	Yes
<ul style="list-style-type: none"> <li>DisplayPort</li> </ul>	Yes; DisplayPort V1.1
Touch interfaces	
<ul style="list-style-type: none"> <li>USB</li> </ul>	Yes
Degree and class of protection	
IP (at the front)	IP65
IP (rear)	IP20
NEMA (front) <ul style="list-style-type: none"> <li>Enclosure Type 4 at the front</li> </ul>	Yes
Standards, approvals, certificates	
CE mark	Yes
cULus	Yes; Corresponds to UL 508
RCM (formerly C-TICK)	Yes
KC approval	Yes
Use in hazardous areas	
<ul style="list-style-type: none"> <li>FM Class I Division 2</li> </ul>	No
Ambient conditions	
Ambient temperature during operation	
<ul style="list-style-type: none"> <li>min.</li> </ul>	0 °C
<ul style="list-style-type: none"> <li>max.</li> </ul>	50 °C; Vertical installation (horizontal)
Ambient temperature during storage/transportation	
<ul style="list-style-type: none"> <li>min.</li> </ul>	-20 °C
<ul style="list-style-type: none"> <li>max.</li> </ul>	60 °C
Relative humidity	
<ul style="list-style-type: none"> <li>Operation, max.</li> </ul>	95 %; no condensation
Vibrations	
<ul style="list-style-type: none"> <li>Vibration load in operation</li> </ul>	10 m/s <sup>2</sup>
<ul style="list-style-type: none"> <li>Vibration load during transport/storage</li> </ul>	10 m/s <sup>2</sup>
Shock testing	
<ul style="list-style-type: none"> <li>Shock load during operation</li> </ul>	150 m/s <sup>2</sup>
<ul style="list-style-type: none"> <li>shock acceleration during storage/transport</li> </ul>	150 m/s <sup>2</sup>
Mechanics/material	
Enclosure material (front) <ul style="list-style-type: none"> <li>Aluminum</li> </ul>	Yes
Dimensions	
Width of the housing front	415 mm
Height of housing front	310 mm
Mounting cutout, width	396 mm; Tolerance: +1 mm
Mounting cutout, height	291 mm; Tolerance: +1 mm
Overall depth	62.5 mm
Weights	
Weight (without packaging)	3.9 kg
Weight (with packaging)	5 kg
<b>last modified:</b>	11/18/2021 