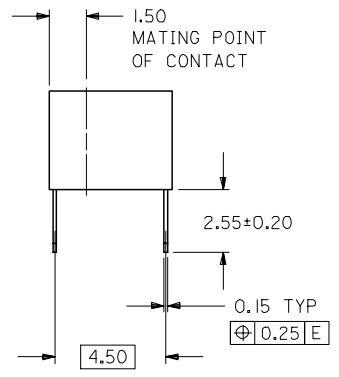
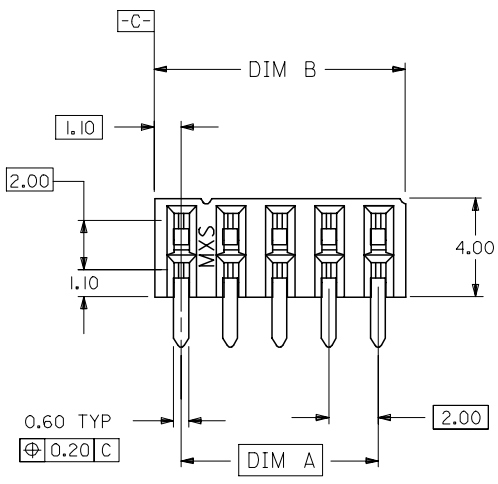


10 9 8 7 6 5 4 3 2 1

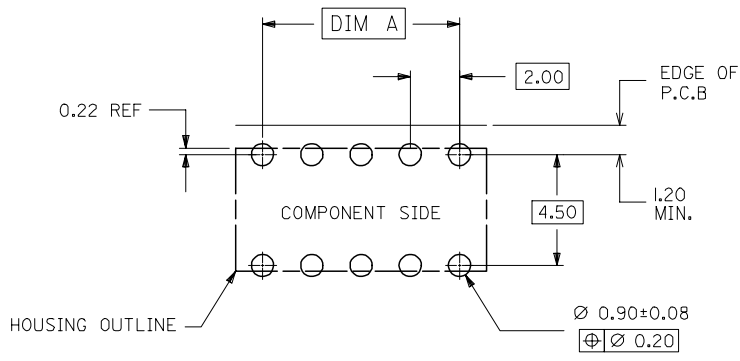
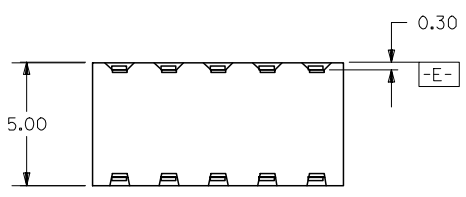


PART NO. LEGEND

87264- \* \* 5 \*  
CIRCUIT SIZE PLATING

POST-PLATED

- 0 - 0.38um/15uin MIN. GOLD PLATE IN SELECTED AREA AND 2.54um/100uin MIN. TIN/LEAD IN SELECTED AREA OVER 1.27um/50uin NICKEL OVERALL ( IN TUBE).
- 1 - 0.76um/30uin MIN. GOLD PLATE IN SELECTED AREA AND 1.90um/75uin MIN. TIN/LEAD IN SELECTED AREA OVER 1.27um/50uin NICKEL OVERALL ( IN TUBE).
- 2 - 0.38um/15uin MIN. GOLD PLATE IN SELECTED AREA AND 2.54um/100uin MIN. TIN IN SELECTED AREA OVER 1.27um/50uin NICKEL OVERALL ( IN TUBE).
- 3 - 0.76um/30uin MIN. GOLD PLATE IN SELECTED AREA AND 2.54um/100uin MIN. TIN IN SELECTED AREA OVER 1.27um/50uin NICKEL OVERALL ( IN TUBE).
- 6 - 0.38um/15uin MIN. GOLD PLATE IN SELECTED AREA AND 2.54um/100uin MIN. TIN/LEAD IN SELECTED AREA OVER 1.27um/50uin NICKEL OVERALL. (IN TAPE/REEL)
- 7 - 0.76um/30uin MIN. GOLD PLATE IN SELECTED AREA AND 2.54um/100uin MIN. TIN/LEAD IN SELECTED AREA OVER 1.27um/50uin NICKEL OVERALL. (IN TAPE/REEL)
- 8 - 0.38um/15uin MIN. GOLD PLATE IN SELECTED AREA AND 2.54um/100uin MIN. TIN IN SELECTED AREA OVER 1.27um/50uin NICKEL OVERALL. (IN TAPE/REEL)
- 9 - 0.76um/30uin MIN. GOLD PLATE IN SELECTED AREA AND 2.54um/100uin MIN. TIN IN SELECTED AREA OVER 1.27um/50uin NICKEL OVERALL. (IN TAPE/REEL)

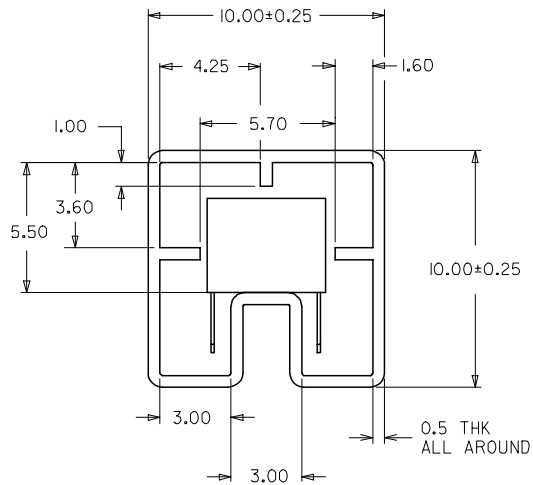
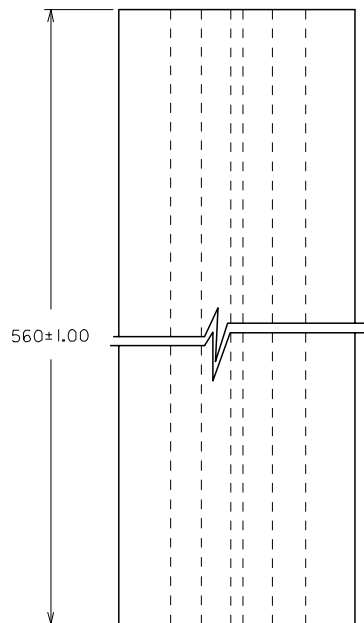


RECOMMENDED P.C. BOARD LAYOUT

- NOTES:
1. IO CIRCUIT SIZE SHOWN FOR ILLUSTRATION ONLY. SEE CHART FOR AVAILABLE PART SIZES.
  2. PLATING FINISH : TERMINAL - AS PER LEGEND
  3. RECOMMENDED PC BOARD THICKNESS IS 1.60 +/- 0.10mm.
  4. PRODUCT SPECIFICATION PS-87264 APPLIES.
  5. PART IS MATEABLE TO ALL MILLI-GRID HEADERS WITH MATING PIN LENGTH BETWEEN 2.50mm AND 4.20mm.
  6. TAPE & REEL OPTION IS SHOWN ON SHT 3 WITH 8 CKT ILLUSTRATION.

|  |                               |                                       |                      |   |   |                               |                        |                        |  |  |
|--|-------------------------------|---------------------------------------|----------------------|---|---|-------------------------------|------------------------|------------------------|--|--|
| UPDATE REVISION<br>EC NO: S2005-0714<br>DRWN:KSE<br>CHKD:BLW<br>APPR:PTLIM<br>2005/10/19<br>2005/10/19<br>2005/11/05<br>D2 | QUALITY SYMBOLS<br>▽=0<br>▽=0 | GENERAL TOLERANCES (UNLESS SPECIFIED) |                      | DIMENSION STYLE<br>MM ONLY  |   | SCALE<br>NTS                  | DESIGN UNITS<br>METRIC | THIRD ANGLE PROJECTION |  |  |
|  |                               | 4 PLACES ± --- ± ---                  | DRAWN BY<br>JWAN     | DATE<br>1992/02/25  | TITLE<br>SALES DRAWING<br>MGRID, 2MM DUAL ROW HDR.<br>SIDE ENTRY RECEPT., T/H |                               |                        |                        |  |  |
|  |                               | 3 PLACES ± --- ± ---                  | CHECKED BY<br>MLA1   | DATE<br>1992/02/25  | MOLEX INCORPORATED  |                               |                        |                        |  |  |
|  |                               | 2 PLACES ± 0.2 ± ---                  | APPROVED BY<br>RWONG | DATE<br>1992/02/25  | MATERIAL NO.<br>SEE TABLE   | DOCUMENT NO.<br>SD-87264-**50 | SHEET NO.<br>1 OF 3    |                        |  |  |
| DRAFT WHERE APPLICABLE<br>MUST REMAIN WITHIN DIMENSIONS  |                               | SIZE<br>A3                            |                      | THIS DRAWING CONTAINS INFORMATION THAT IS PROPRIETARY TO MOLEX INCORPORATED AND SHOULD NOT BE USED WITHOUT WRITTEN PERMISSION |   |                               |                        |                        |  |  |

9 8 7 6 5 4 3 2 1



PART IN TUBE ORIENTATION.

| PART NUMBER<br>0.38um GOLD<br>PLATING $\triangle_2$ | PART NUMBER<br>0.76um GOLD<br>PLATING $\triangle_2$ | CKT.<br>SIZE | DIM A | DIM B |
|---|---|--------------|-------|-------|
| 87264-065*  | 87264-065*  | 6            | 4.00  | 6.20  |
| 87264-085*  | 87264-085*  | 8            | 6.00  | 8.20  |
| 87264-105*  | 87264-105*  | 10           | 8.00  | 10.20 |
| 87264-125*  | 87264-125*  | 12           | 10.00 | 12.20 |
| 87264-145*  | 87264-145*  | 14           | 12.00 | 14.20 |
| 87264-165*  | 87264-165*  | 16           | 14.00 | 16.20 |
| 87264-185*  | 87264-185*  | 18           | 16.00 | 18.20 |
| 87264-205*  | 87264-205*  | 20           | 18.00 | 20.20 |
| 87264-225*  | 87264-225*  | 22           | 20.00 | 22.20 |
| 87264-245*  | 87264-245*  | 24           | 22.00 | 24.20 |
| 87264-265*  | 87264-265*  | 26           | 24.00 | 26.20 |
| 87264-285*  | 87264-285*  | 28           | 26.00 | 28.20 |
| 87264-305*  | 87264-305*  | 30           | 28.00 | 30.20 |
| 87264-325*  | 87264-325*  | 32           | 30.00 | 32.20 |
| 87264-345*  | 87264-345*  | 34           | 32.00 | 34.20 |
| 87264-365*  | 87264-365*  | 36           | 34.00 | 36.20 |
| 87264-385*  | 87264-385*  | 38           | 36.00 | 38.20 |
| 87264-405*  | 87264-405*  | 40           | 38.00 | 40.20 |
| 87264-425*  | 87264-425*  | 42           | 40.00 | 42.20 |
| 87264-445*  | 87264-445*  | 44           | 42.00 | 44.20 |
| 87264-465*  | 87264-465*  | 46           | 44.00 | 46.20 |
| 87264-485*  | 87264-485*  | 48           | 46.00 | 48.20 |
| 87264-505*  | 87264-505*  | 50           | 48.00 | 50.20 |

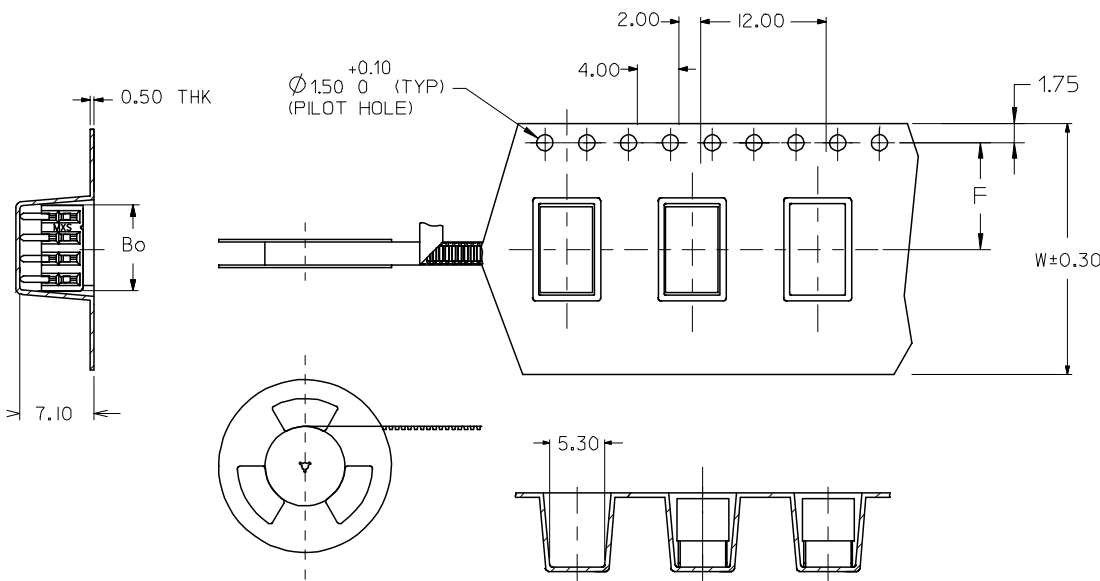
| UPDATE REVISION<br>EC NO: S2005-0714<br>2005/10/19<br>DRWN:KSEE<br>CHKD:BLW<br>2005/10/19<br>APPR:PTLIM<br>2005/11/05<br>D2 | DESCRIPTION<br>REV                         | QUALITY SYMBOLS   | GENERAL TOLERANCES<br>(UNLESS SPECIFIED) | DIMENSION STYLE     | SCALE | DESIGN UNITS | THIRD ANGLE<br>PROJECTION |          |       |       |          |       |       |          |       |       |         |       |       |  |   |
|---|--|---|--|---------------------|-------|--------------|---------------------------|----------|-------|-------|----------|-------|-------|----------|-------|-------|---------|-------|-------|--|---|
|   |  | $\nabla = 0$<br>$\triangle = 0$   |  | MM ONLY             | NTS   | METRIC       |                           |          |       |       |          |       |       |          |       |       |         |       |       |  |   |
|   |  | <table border="1"> <thead> <tr> <th></th> <th>mm</th> <th>INCH</th> </tr> </thead> <tbody> <tr><td>4 PLACES</td><td>± ---</td><td>± ---</td></tr> <tr><td>3 PLACES</td><td>± ---</td><td>± ---</td></tr> <tr><td>2 PLACES</td><td>± 0.2</td><td>± ---</td></tr> <tr><td>1 PLACE</td><td>± ---</td><td>± ---</td></tr> </tbody> </table> |  |                     | mm    | INCH         |                           | 4 PLACES | ± --- | ± --- | 3 PLACES | ± --- | ± --- | 2 PLACES | ± 0.2 | ± --- | 1 PLACE | ± --- | ± --- | DRAWN BY<br>JWAN<br>DATE<br>1992/02/25 | TITLE<br>SALES DRAWING<br>MGRID, 2MM DUAL ROW HDR.<br>SIDE ENTRY RECEPT., T/H |
|   |  |   |  | mm                  | INCH  |              |                           |          |       |       |          |       |       |          |       |       |         |       |       |  |   |
| 4 PLACES  | ± ---                                      | ± ---   |  |                     |       |              |                           |          |       |       |          |       |       |          |       |       |         |       |       |  |   |
| 3 PLACES  | ± ---                                      | ± ---   |  |                     |       |              |                           |          |       |       |          |       |       |          |       |       |         |       |       |  |   |
| 2 PLACES  | ± 0.2                                      | ± ---   |  |                     |       |              |                           |          |       |       |          |       |       |          |       |       |         |       |       |  |   |
| 1 PLACE   | ± ---                                      | ± ---   |  |                     |       |              |                           |          |       |       |          |       |       |          |       |       |         |       |       |  |   |
| ANGULAR ± 3°  | APPROVED BY<br>RWONG<br>DATE<br>1992/02/25 | MATERIAL NO.<br>SEE TABLE   | DOCUMENT NO.<br>SD-87264-**50            | SHEET NO.<br>2 OF 3 |       |              |                           |          |       |       |          |       |       |          |       |       |         |       |       |  |   |

DRAFT WHERE APPLICABLE  
MUST REMAIN  
WITHIN DIMENSIONS

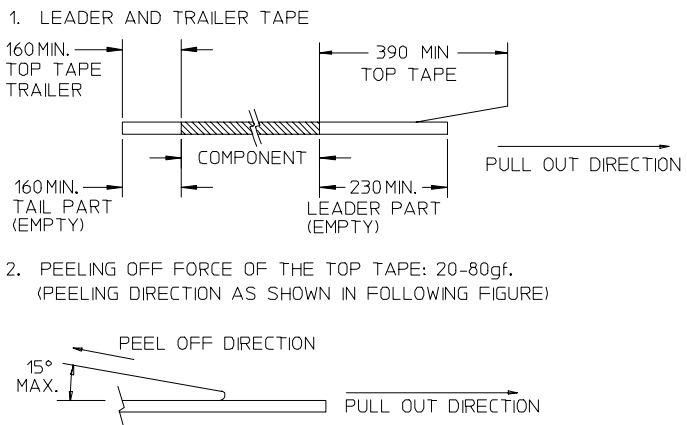
SIZE  
A3

THIS DRAWING CONTAINS INFORMATION THAT IS PROPRIETARY TO MOLEX INCORPORATED AND SHOULD NOT BE USED WITHOUT WRITTEN PERMISSION

|   |   |             |       |       |        |
|---|---|-------------|-------|-------|--------|
| PART NUMBER<br>0.38um GOLD<br>PLATING $\triangle_2$<br>(IN TAPE/REEL) | PART NUMBER<br>0.76um GOLD<br>PLATING $\triangle_2$<br>(IN TAPE/REEL) | CKT<br>SIZE | DIM W | DIM F | DIM Bo |
| 87264-085*  | 87264-085*  | 8           | 24.00 | 11.50 | 8.80   |



NOTES:



- 3. PACKAGING STANDARD IS AS PER EIA-481.
- 4. TAPE & REEL QUANTITY = 600PCS/REEL

CUSTOMER PULL OUT DIRECTION →

|  |             |   |  |       |  |                      |                        |   |  |
|--|-------------|---|--|-------|--|----------------------|------------------------|---|--|
| ADD LEADER & TRAILER<br>EC NO: S2005-0714<br>DRWN:KSEE<br>CHKD:BLW<br>APPR:PTLIM | 2005/10/19  | QUALITY<br>SYMBOLS<br>$\nabla=0$<br>$\triangle=0$ | GENERAL TOLERANCES<br>(UNLESS SPECIFIED)                   |       | DIMENSION STYLE<br>MM ONLY   | SCALE<br>NTS         | DESIGN UNITS<br>METRIC | THIRD ANGLE<br>PROJECTION                           |  |
|  | 2005/10/19  |   | 4 PLACES   | ± --- | ± ---  | DRAWN BY<br>JWAN     | DATE<br>1992/02/25     | TITLE<br>SALES DRAWING                              |  |
|  | 2005/11/05  |   | 3 PLACES   | ± --- | ± ---  | CHECKED BY<br>MLA1   | DATE<br>1992/02/25     | MGRID, 2MM DUAL ROW HDR.<br>SIDE ENTRY RECEPT., T/H |  |
|  |             |   | 2 PLACES   | ± 0.2 | ± ---  | APPROVED BY<br>RWONG | DATE<br>1992/02/25     | MOLEX INCORPORATED                                  |  |
| D2   | DESCRIPTION |   | 1 PLACE  | ± --- | ± ---  | MATERIAL NO.         | DOCUMENT NO.           | SHEET NO.   |  |
|  | REV         |   | ANGULAR ± 3 °  |       | SEE TABLE  |                      | SD-87264-**50          | 3 OF 3  |  |
|  |             |   | DRAFT WHERE APPLICABLE<br>MUST REMAIN<br>WITHIN DIMENSIONS |       | THIS DRAWING CONTAINS INFORMATION THAT IS PROPRIETARY TO MOLEX<br>INCORPORATED AND SHOULD NOT BE USED WITHOUT WRITTEN PERMISSION |                      |                        |   |  |