

MATERIALS AND FINISHES

BODY BRASS
PLATED NICKEL

CENTER CONTACT PHOSPHOR BRONZE
PLATED GOLD

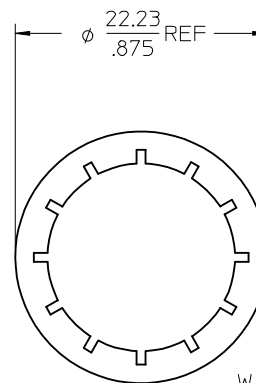
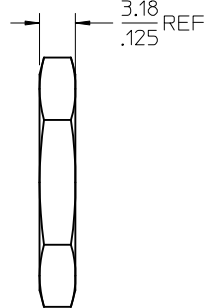
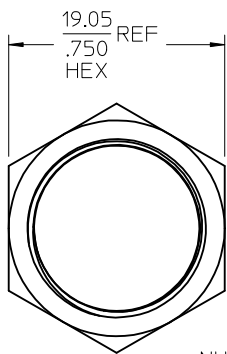
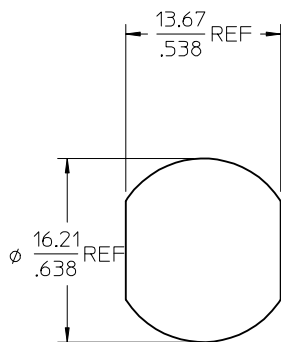
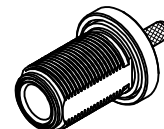
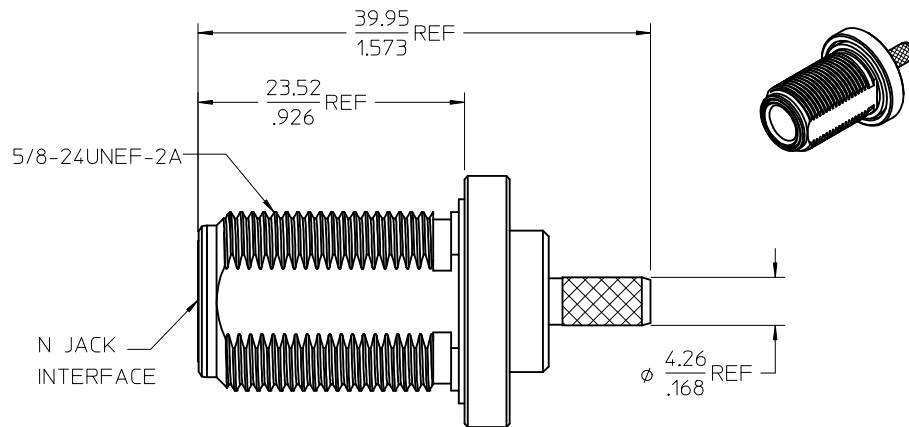
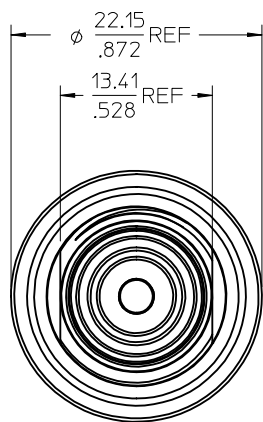
INSULATOR TEFLON

CRIMP FERRULE BRASS
PLATED NICKEL

GASKET SILICONE RUBBER

WASHER PHOSPHOR BRONZE
PLATED NICKEL

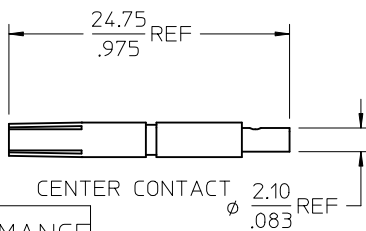
NUT BRASS
PLATED NICKEL



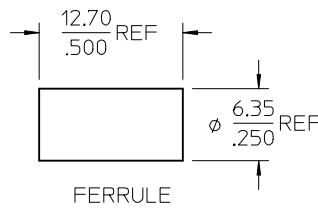
NUT

WASHER

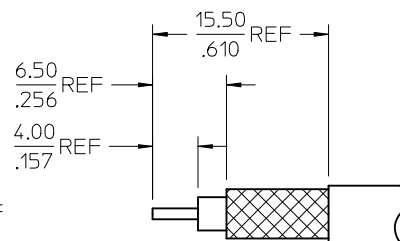
RECOMMENDED MOUNTING HOLE
MAXIMUM PANEL THICKNESS: 6.35(.25)
RECOMMENDED MOUNTING TORQUE: 229N-CM(20 IN-LBS)



CENTER CONTACT



FERRULE



CABLE STRIP DIMENSION
CENTER CONTACT CRIMP (HEX:1.69(.067))
OUTER CONDUCTOR CRIMP (HEX:5.41(.213))

PART # 73100-0038

PS-73598-0033	ELEC/MECH PERFORMANCE
SPECIFICATION	DESCRIPTION

CHG: REDREW TO CORRECT VIEW LINKS	EC NO: URF2006-0006	QUALITY SYMBOLS
	DRWN:SSHAH 2007/11/15 CHKD:SSHAH 2007/11/15 APPR:WIENER 2007/11/15	▽=0 ▽=0
REV: B1	DESCRIPTION	

GENERAL TOLERANCES (UNLESS SPECIFIED)															
<table border="1"> <tr> <th></th> <th>mm</th> <th>INCH</th> </tr> <tr> <td>4 PLACES</td> <td>± .005</td> <td>± .0002</td> </tr> <tr> <td>3 PLACES</td> <td>± .003</td> <td>± .0001</td> </tr> <tr> <td>2 PLACES</td> <td>± .002</td> <td>± .00008</td> </tr> <tr> <td>1 PLACE</td> <td>± .001</td> <td>± .00004</td> </tr> </table>		mm	INCH	4 PLACES	± .005	± .0002	3 PLACES	± .003	± .0001	2 PLACES	± .002	± .00008	1 PLACE	± .001	± .00004
	mm	INCH													
4 PLACES	± .005	± .0002													
3 PLACES	± .003	± .0001													
2 PLACES	± .002	± .00008													
1 PLACE	± .001	± .00004													
ANGULAR ± 2 °															
DRAFT WHERE APPLICABLE MUST REMAIN WITHIN DIMENSIONS															

DIMENSION STYLE		SCALE
MM/IN		DESIGN UNITS METRIC
DRAWN BY	DATE	TITLE
R FIELDS	1993/05/26	
CHECKED BY	DATE	N JACK, STRAIGHT BULKHEAD FOR RG142 50 OHMS, N-JC
R FIELDS	1993/09/09	
APPROVED BY	DATE	MOLEX INCORPORATED MOLEX INCORPORATED
KHW	1993/08/20	
MATERIAL NO.	DOCUMENT NO.	SHEET NO.
731000038	SD-73100-0038	1 OF 1

THIRD ANGLE PROJECTION	
THIS DRAWING CONTAINS INFORMATION THAT IS PROPRIETARY TO MOLEX INCORPORATED AND SHOULD NOT BE USED WITHOUT WRITTEN PERMISSION	