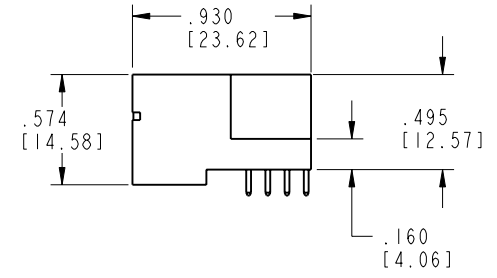
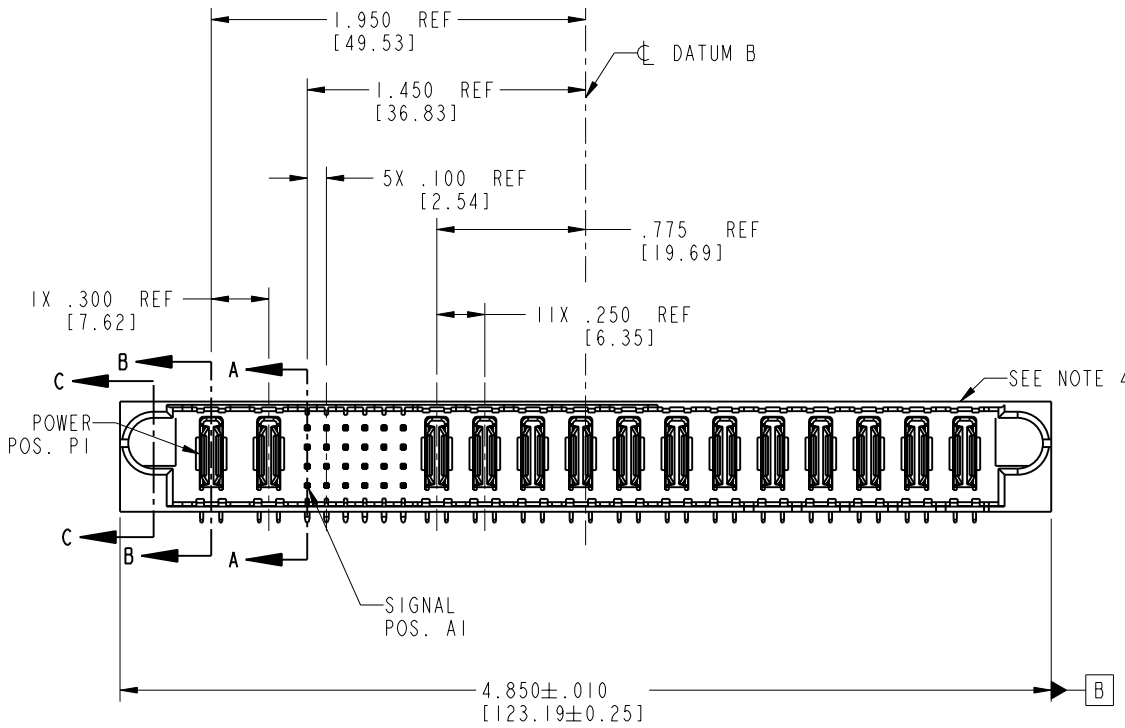
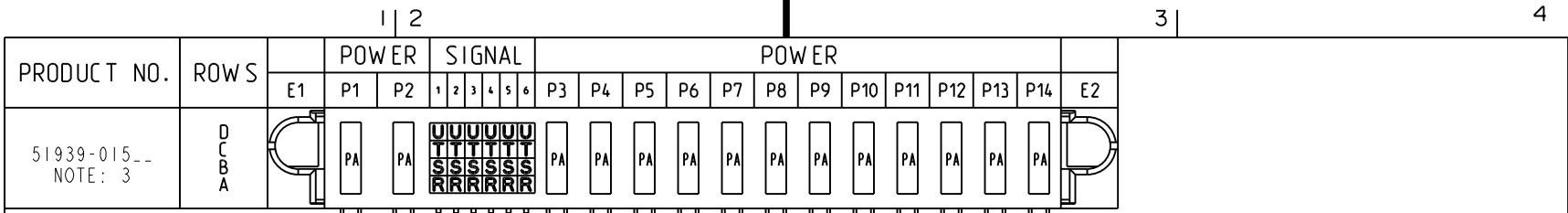


Tous droits strictement réservés. Reproduction ou communication o des liens interdite sous quelque forme que ce soit sans autorisation écrite du propriétaire. Propriete de c FCI. Droits de reproduction FCI.

All rights strictly reserved. Reproduction or issue to third parties in any form whenever is not permitted without written authority from the proprietor. Property of FCI. Copyright FCI.



CODE	DIM "M" MATING LENGTH	CONTACT TYPE
R	.270 [6.86]	SIGNAL
S	.270 [6.86]	SIGNAL
T	.270 [6.86]	SIGNAL
U	.270 [6.86]	SIGNAL
PA	N/A [N/A]	POWER

mat'l code SEE NOTE 2				tolerances unless otherwise specified		CUSTOMER		 www.fciconnect.com	
ltr	ecn no.	dr	date	linear	.XX±.01/0.X±0.3	COPY			
A	V20821	DAI	04/25/02		.XXX±.005/0.XX±0.13	projection			
B	DG06-0008	JMG	01/07/06	angles	.XXX±.0020/0.XXX±0.051				
				dr	D. INGRAM 04/25/02	INCH/MM			
				engr	M. MOSTOLLER 04/25/02	scale			
				chr	M. MOSTOLLER 04/25/02	1:1			
				appd	M. MOSTOLLER 04/25/02				
sheet index	revision sheet	B 1	B 2	B 3	B 4				

cage code 22526

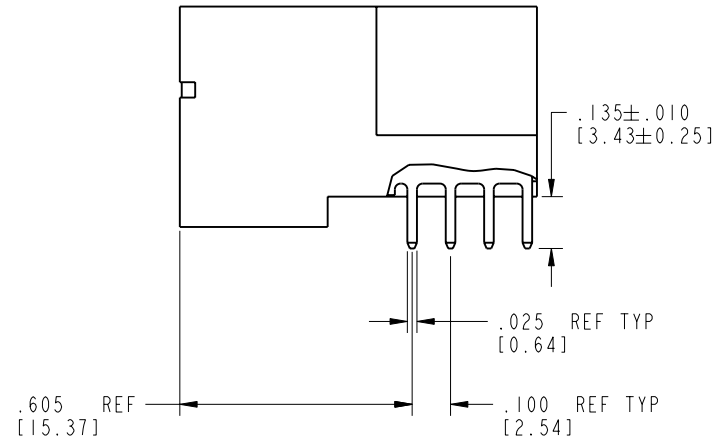
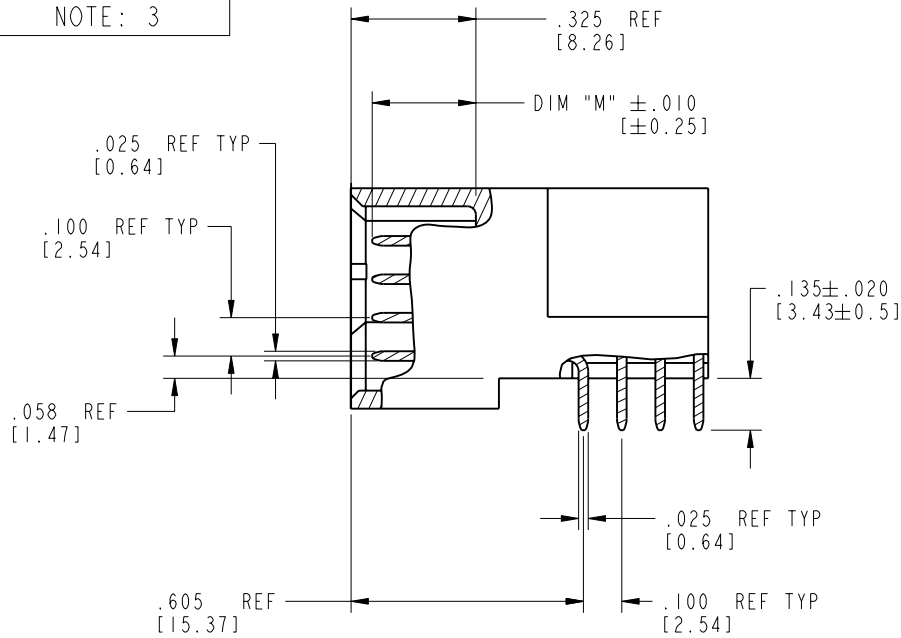
Pro/E

Tous droits strictement réservés. Reproduction ou communication o des liers interdite sous quelque forme que ce soit sans autorisation écrite du propriétaire. Propriete de c FCI. Droits de reproduction FCI.

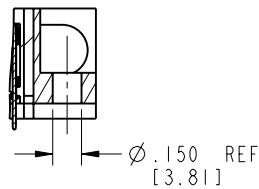
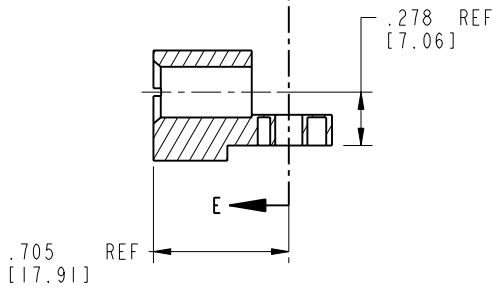
FCI

All rights strictly reserved. Reproduction or issue to third parties in any form, whatever is not permitted without written authority from the proprietor. Property of FCI. Copyright FCI.

PRODUCT NUMBER
51939-015__
NOTE: 3






BROKEN-OUT SECTION A-A
SCALE 2:1



PARTIAL SECTION E-E

SECTION C-C

BROKEN-OUT SECTION B-B
SCALE 2:1

mat'l code		SEE NOTE 2		tolerances unless otherwise specified		CUSTOMER		 www.fciconnect.com	
lfr	ecr no.	dr	date	linear	.XX±.01/0.X±0.3	COPY			
B				projection	.XXX±.005/0.XX±0.13			title 2P + 24S + 12P RIGHT ANGLE SOLDER HEADER	
				angles	.XXX±.0020/0.XXX±0.051 0°±?			product family PwrBlade code 213	
				dr	D. INGRAM 04/25/02	scale 1:1		size dwg no A 51939-015	
				engr	M. MOSTOLLER 04/25/02			sheet 2 of 4	
				chr	M. MOSTOLLER 04/25/02				
				appd	M. MOSTOLLER 04/25/02				
sheet index	revision sheet								

cage code 22526

Pro/E

PDM: Rev:B

STATUS: Released

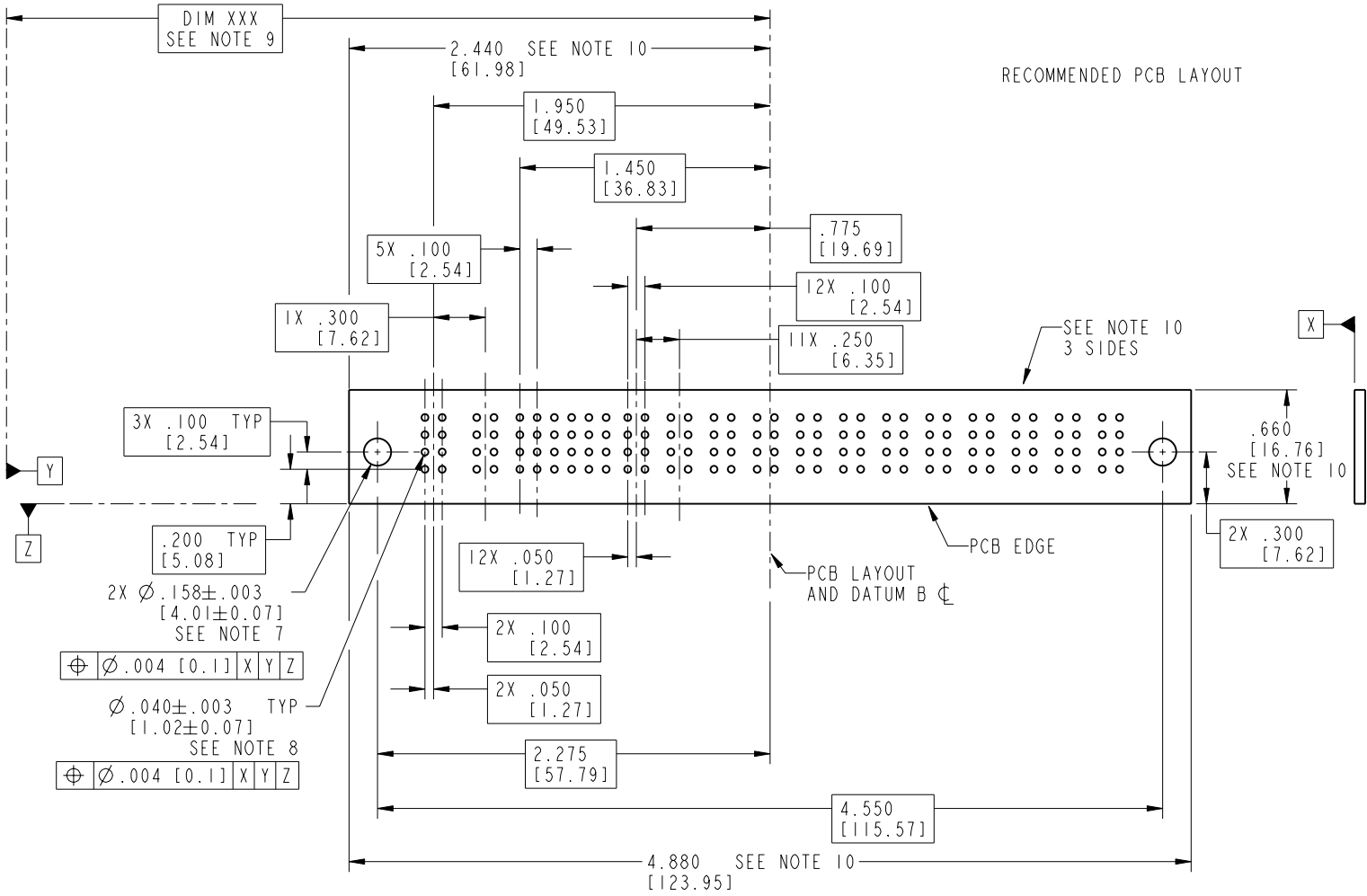
Printed: Oct 08, 2006

Tous droits strictement réservés. Reproduction ou communication o des liers interdite sous quelque forme que ce soit sans autorisation écrite du propriétaire. Propriete de c FCI. Droits de reproduction FCI.

All rights strictly reserved. Reproduction or issue to third parties in any form whatever is not permitted without written authority from the proprietor. Property of FCI. Copyright FCI.



PRODUCT NUMBER
51939-015--
NOTE: 3



3X .100 TYP [2.54]
 $\varnothing .200$ TYP [5.08]
 $2X \varnothing .158 \pm .003$ [4.01 ± 0.07] SEE NOTE 7
 $\varnothing .004$ [0.1] X|Y|Z
 $\varnothing .040 \pm .003$ TYP [1.02 ± 0.07] SEE NOTE 8
 $\varnothing .004$ [0.1] X|Y|Z

mat'l code SEE NOTE 2				tolerances unless otherwise specified		CUSTOMER		www.fciconnect.com	
lfr	ecn no.	dr	date	linear	.XX ± .01 / 0.X ± 0.3	COPY		title 2P + 24S + 12P	
B				angles	.XXX ± .005 / 0.XX ± 0.13 .XXX ± .0020 / 0.XX ± 0.051	projection		RIGHT ANGLE SOLDER HEADER	
				dr	D. INGRAM 04/25/02	INCH/MM		product family PwrBlade code 213	
				enrg	M. MOSTOLLER 04/25/02	scale 1:1		size dwg no A 51939-015 sheet 3 of 4	
				chr	M. MOSTOLLER 04/25/02				
				appd	M. MOSTOLLER 04/25/02				
sheet index	revision sheet								

cage code 22526

Pro/E

Tous droits strictement reserves. Reproduction ou communication o des liers interdite sous quelque forme que ce soit sans autorisation ecrite du proprietaire. Propriete de c FCI. Droits de reproduction FCI.



All rights strictly reserved. Reproduction or issue to third parties in any form, whenever is not permitted without written authority from the proprietor. Property of FCI. Copyright FCI.

PRODUCT NUMBER
51939-015__
NOTE: 3

NOTES:

1. DIMENSIONS AND TOLERANCES ARE IN ACCORDANCE WITH ASME Y14.5M, 1994 UNLESS OTHERWISE SPECIFIED.

CONNECTOR NOTES:

- 2. HOUSING MATERIAL: UL 94 V-0 GLASS FILLED
HIGH-TEMP THERMOPLASTIC
POWER CONTACT MATERIAL: COPPER ALLOY
SIGNAL PIN MATERIAL: COPPER ALLOY
- 3. 51939-015;51939-015LF;51939-015GLF PLATING SPEC. SEE PRINT:10064183
- 4. MANUFACTURER'S NAME, P/N, AND DATE CODE TO APPEAR ON THIS SURFACE.
- 5. PRODUCT SPECIFICATION GS-12-149.
APPLICATION SPECIFICATION BUS-20-067.

PCB NOTES:

- 6. ALL HOLE DIAMETERS ARE FINISHED HOLE SIZE.
- 7. MOUNTING HOLES, WHERE APPLICABLE, ARE UNPLATED.
- 8. $\varnothing .0453 \pm 0.0010$ [1.151 \pm 0.025] DRILLED HOLES PLATED WITH 0.0003 [0.008] MIN SnPb OVER .001 [0.03] TO .003 [0.08] Cu PLATING TO ACHIEVE $\varnothing .040 \pm .003$ [1.02 \pm .07] HOLE.
- 9. "DIM XXX" TO BE DETERMINED BY THE CUSTOMER.
- 10. CONNECTOR KEEP-OUT ZONE.

mat'l code		SEE NOTE 2		tolerances unless otherwise specified		CUSTOMER		www.fciconnect.com	
lfr	ecn no.	dr	date	linear	.XX±.01/0.X±0.3	COPY			
B				projection	.XXX±.005/0.XX±0.13			title	2P + 24S + 12P
				angles	.XXX±.0020/0.XXX±0.051			RIGHT ANGLE SOLDER HEADER	
				dr	D. INGRAM 04/25/02	INCH/MM		product family	PwrBlade
				engr	M.MOSTOLLER 04/25/02	scale		code	213
				chr	M.MOSTOLLER 04/25/02	1:1		size	dwg no
				appd	M.MOSTOLLER 04/25/02			A	51939-015
sheet index	revision sheet							sheet	4 of 4

cage code 22526

Pro/E

PDM: Rev:B

STATUS: Released

Printed: Oct 08, 2006