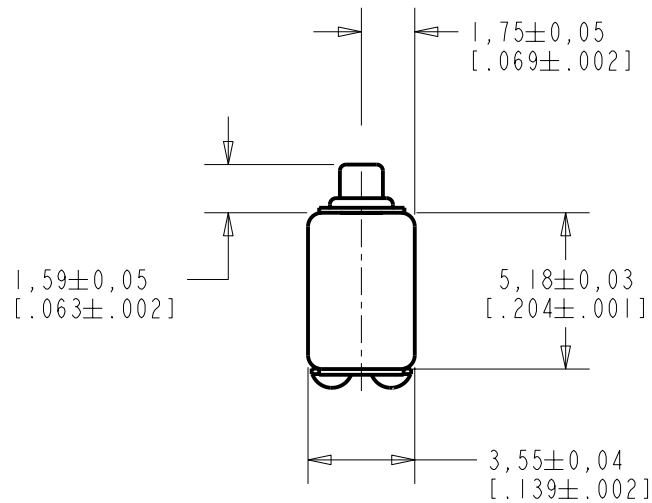


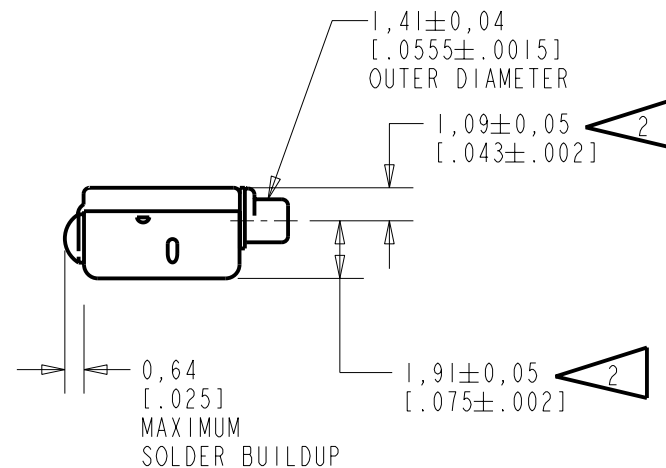
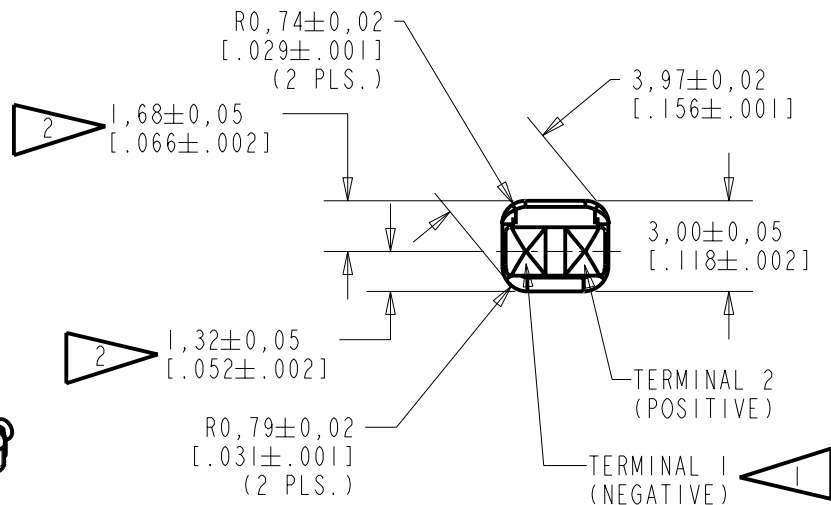
FC-26887-000

SHT 1.1



NOTES:

- 1 A POSITIVE GOING VOLTAGE AT TERMINAL 2, RELATIVE TO TERMINAL 1, CAUSES A DECREASE IN PRESSURE AT THE SOUND OUTLET.
- 2 LOCATED FROM TWO SURFACES FOR CUSTOMER CONVENIENCE. ONLY APPLICABLE FROM ONE SURFACE, NOT TO BE USED TOGETHER.



SCALE 2:1

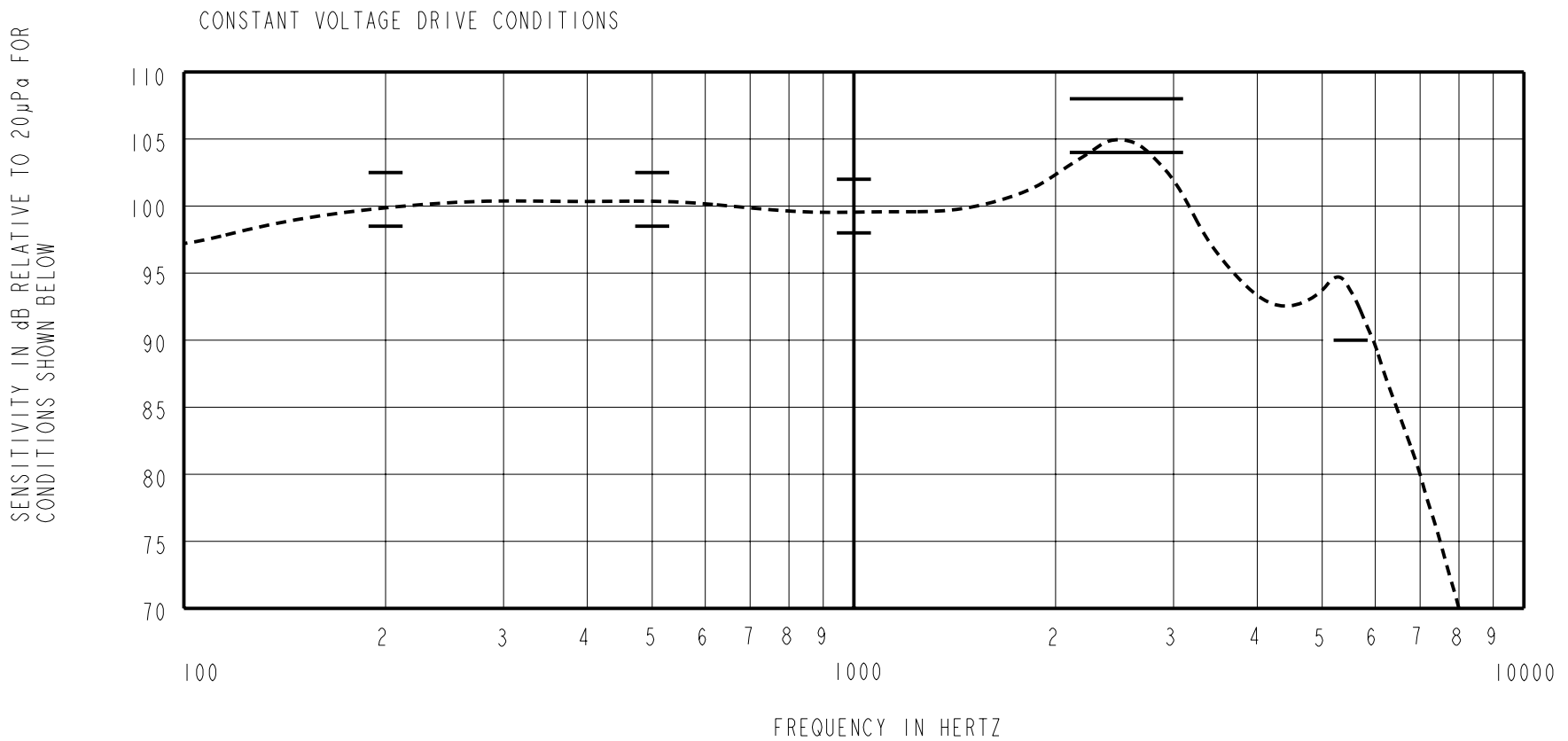
NOMINAL WEIGHT
.23 GRAMS

DIMENSIONS IN MILLIMETERS [INCHES]

KNOWLES ELECTRONICS
ITASCA, ILLINOIS U.S.A.

| Revision | C.O. # | Implementation Date | RELEASE LEVEL | REVISION |
|----------------------|-----------|---------------------|---------------|----------|
| A | CI0103822 | 2-9-06 | Released | A |
| SCALE: 4:1 | | | DR. BY | DATE |
| DO NOT SCALE DRAWING | | | AB | 2-9-06 |
| TITLE: RECEIVER | | | CK. BY | DATE |
| OUTLINE DRAWING | | | GJP | 2-12-06 |
| FC-26887-000 | | | APP. BY | DATE |
| SHT 1.1 | | | GJP | 2-12-06 |

THE FC-26887-000 IS A TYPE III DAMPED MAGNETIC BALANCED ARMATURE RECEIVER INTENDED FOR USE IN ITC AND CIC HEARING INSTRUMENTS.



ACOUSTICAL

SENSITIVITY
 DEVICE WILL PRODUCE THE SPL LISTED BELOW UNDER TEST CONDITIONS DESCRIBED IN TABLE 3.
 NOMINAL SENSITIVITY AT 1kHz IS dB RELATIVE TO 20µPa. ALL OTHER VALUES IN dB RELATIVE TO THE SENSITIVITY AT 1kHz.

| FREQUENCY (Hz) | MINIMUM | NOMINAL | MAXIMUM |
|----------------|---------|---------|---------|
| 200 | -1.5 | +0.5 | +2.5 |
| 500 | -1.5 | +0.5 | +2.5 |
| 1000 | -2.0 | 100.0 | +2.0 |
| 2100 - 3100 | +4.0 | +6.0 | +8.0 |
| 5200 | -10.0 | --- | --- |

PORT LOCATION: 12C

TABLE 1

TOTAL HARMONIC DISTORTION
 DEVICE WILL NOT EXCEED TOTAL HARMONIC DISTORTION LEVELS LISTED BELOW.

| FREQUENCY (Hz) | AC DRIVE (V rms) | DC BIAS (V) | LIMIT (%) |
|----------------|------------------|-------------|-----------|
| 500 | 0.732 | 0 | 10 |
| 870 | 0.366 | 0 | 5 |
| 1300 | 0.366 | 0 | 5 |

TABLE 2

TEST CONDITIONS

| | |
|------------------------|---|
| NOMINAL SOURCE VOLTAGE | 0.366 V rms, 0 mA DC BIAS |
| SOURCE IMPEDANCE | <1 Ohm |
| TUBING | 10mm [.394"] LONG, 1mm [.039"] I.D. |
| COUPLER CAVITY | 2 CM ³ , SIMULATED ANSI S3.7 TYPE HA-3 (IEC 126) |

TABLE 3

ELECTRICAL

| | |
|--------------------|----------------|
| DC RESISTANCE | 354 Ohms ± 10% |
| IMPEDANCE @ 500 Hz | 425 Ohms ± 15% |
| IMPEDANCE @ 1kHz | 550 Ohms ± 15% |

TABLE 4

ISOLATION: CASE WILL BE ELECTRICALLY ISOLATED FROM THE COIL CIRCUIT.

| Revision | C.O. # | Implementation Date | RELEASE LEVEL | REVISION |
|--|-----------|---------------------|--------------------------------|----------|
| | | | Released | A |
| A | C10103822 | 2-9-06 | | |
| WHEN TEST LIMITS ARE USED TO ESTABLISH INCOMING INSPECTION ACCEPTANCE/REJECTION CRITERIA, CORRELATION OF TEST EQUIPMENT WITH KNOWLES IS ALSO REQUIRED FOR ELIMINATION OF EQUIPMENT AND TEST METHOD VARIATION | | | DR. BY | DATE |
| KNOWLES ELECTRONICS ITASCA, ILLINOIS U.S.A. | | | AB | 2-9-06 |
| | | | CK. BY | DATE |
| TITLE: RECEIVER PERFORMANCE SPECIFICATION | | | GJP | 2-12-06 |
| | | | FC-26887-000 SHT 2.1 | |
| | | | GJP | 2-12-06 |