

List of "HFW__S-2STE1HLF" customer document

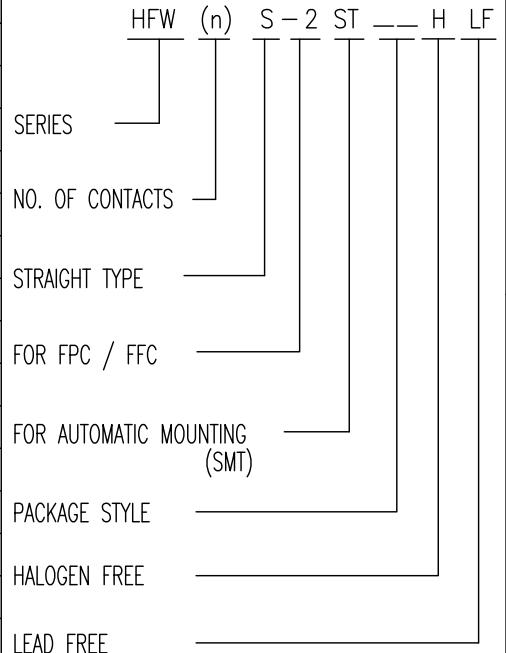
DOCUMENT NO.	LIST
SC-HFWS03	SPEC.
10142181 Sheet2	CAT.NO.TABLE FOR 1mm SPACING SMT CONNECTOR (HFW__S-2ST_HLF)
10142181 Sheet3	1mm SPACING SURFACE MOUNT FPC/FFC CONNECTOR (HFW__S-2ST_HLF)
10142181 Sheet4	CAT.NO.TABLE FOR PLASTIC TAPE PACKAGED 1mm SPACING SMT CONN. (HFW__S-2STE1HLF)
10142181 Sheet5	PLASTIC TAPE PACKAGED 1mm SPACING SMT CONNECTOR (HFW__S-2STE1HLF)
10142181 Sheet6	RECOMMENDED CABLE (FPC) (HFW_S-2ST_)
10142181 Sheet7	RECOMMENDED CABLE (FFC) (HFW_S-2ST_)

mat'l. code				surface ISO 1302 <input checked="" type="checkbox"/>				tolerance ISO 406 <input checked="" type="checkbox"/> ISO 1101				projection				product family 580F				CODE JP			
ltr		ecn no		dr		date		tolerances unless otherwise specified				 scale NON				title 1mm SPACING FPC CONNECTOR DOCUMENT LIST (Cat. No. : HFW__S-2STE1HLF)							
A				N.S		2016-12-13		angles															
B		ELX-J-32765		N.S		2019-02-25		linear															
								0°±x'								dwg no sheet 1 of 7 size							
								dr N.Sasame 2019-02-25								10142181 A4							
								engr N.Sasame 2019-02-25								type Product Customer Drawing							
								chr H.Suzuki 2019-02-25								Rev. B							
								appd Y.Kameda 2019-02-25															
sheet index		revision sheet		B		B		B		B		B		B		B		B		B			
1		2		3		4		5		6		7											

CAT. NO. & DIMENSIONS

(NOTE 3)	NO. OF CONTACTS (n)	CAT. NO.	DIMENSIONS (NOTE2)				
			A ± 0.2	B ± 0.2	C ± 0.2	D ± 0.2	E ± 0.2
	4	HFW4S-2ST__HLF	7	5.14	3	—	—
	5	HFW5S-2ST__HLF	8	6.14	4	—	—
	6	HFW6S-2ST__HLF	9	7.14	5	—	—
	7	HFW7S-2ST__HLF	10	8.14	6	—	—
	8	HFW8S-2ST__HLF	11	9.14	7	—	—
	9	HFW9S-2ST__HLF	12	10.14	8	0.35	7.3
	10	HFW10S-2ST__HLF	13	11.14	9	0.35	8.3
	11	HFW11S-2ST__HLF	14	12.14	10	1.35	7.3
	12	HFW12S-2ST__HLF	15	13.14	11	1.35	8.3
	13	HFW13S-2ST__HLF	16	14.14	12	2.35	7.3
	14	HFW14S-2ST__HLF	17	15.14	13	2.35	8.3
	15	HFW15S-2ST__HLF	18	16.14	14	3.35	7.3
	16	HFW16S-2ST__HLF	19	17.14	15	3.35	8.3
	17	HFW17S-2ST__HLF	20	18.14	16	4.35	7.3
	18	HFW18S-2ST__HLF	21	19.14	17	4.35	8.3
	19	HFW19S-2ST__HLF	22	20.14	18	5.35	7.3
	20	HFW20S-2ST__HLF	23	21.14	19	5.35	8.3
	21	HFW21S-2ST__HLF	24	22.14	20	6.35	7.3
	22	HFW22S-2ST__HLF	25	23.14	21	6.35	8.3
	23	HFW23S-2ST__HLF	26	24.14	22	7.35	7.3
	24	HFW24S-2ST__HLF	27	25.14	23	7.35	8.3
	25	HFW25S-2ST__HLF	28	26.14	24	8.35	7.3
	26	HFW26S-2ST__HLF	29	27.14	25	8.35	8.3
	27	HFW27S-2ST__HLF	30	28.14	26	9.35	7.3
	28	HFW28S-2ST__HLF	31	29.14	27	9.35	8.3
	29	HFW29S-2ST__HLF	32	30.14	28	10.35	7.3
	30	HFW30S-2ST__HLF	33	31.14	29	10.35	8.3
*	31	HFW31S-2ST__HLF	34	32.14	30	11.35	7.3
	32	HFW32S-2ST__HLF	35	33.14	31	11.35	8.3
*	33	HFW33S-2ST__HLF	36	34.14	32	12.35	7.3

CAT. NO.



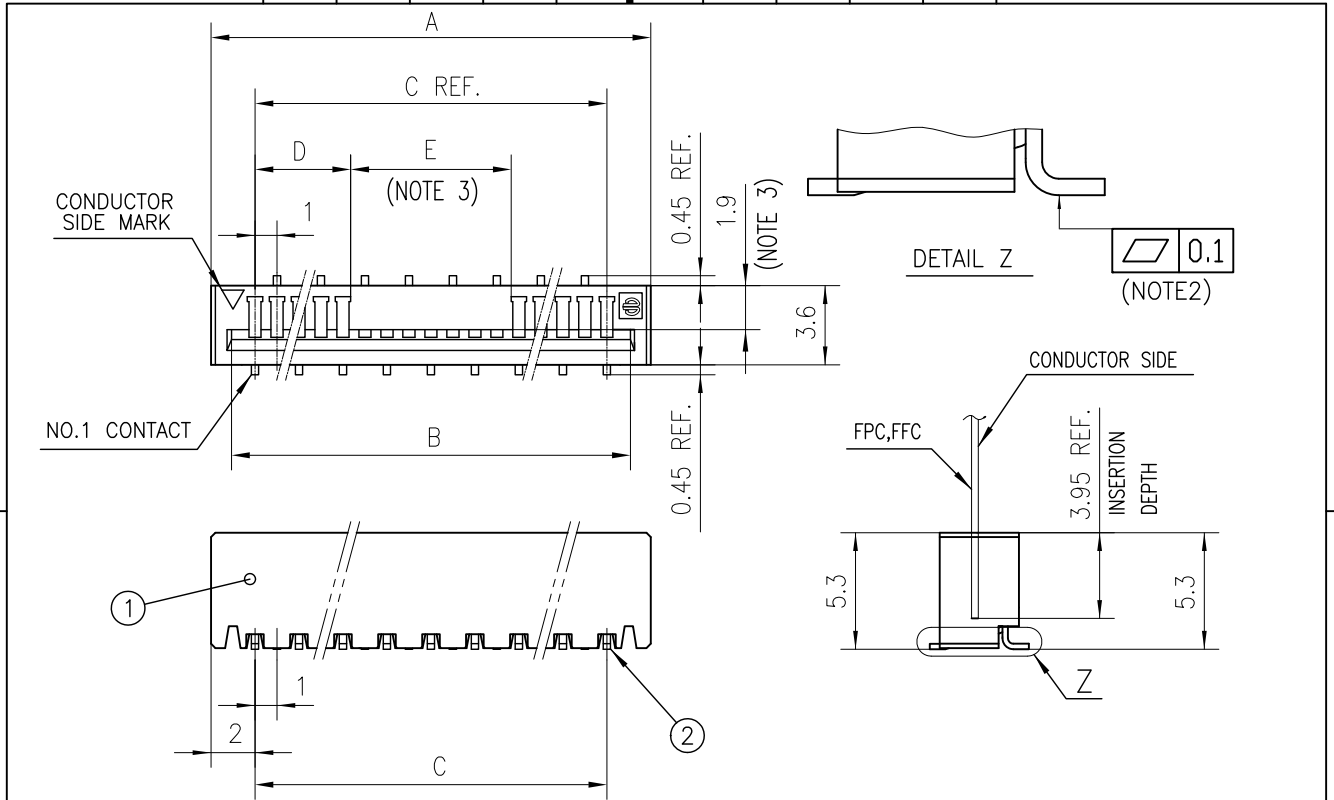
NOTES

1. THIS PRODUCT IS THE CONNECTOR DSGINED TO TERMINATE FPC/FFC AND COPES WITH AUTOMATIC MOUNTING (SMT).
2. SEE PART DRAWINGS FOR DIMENSIONS A~E.
3. PLEASE CONSULT US IN CASE OF USING PARTS WITH * MARK.

Amphenol FCI

© 2016 AFCl

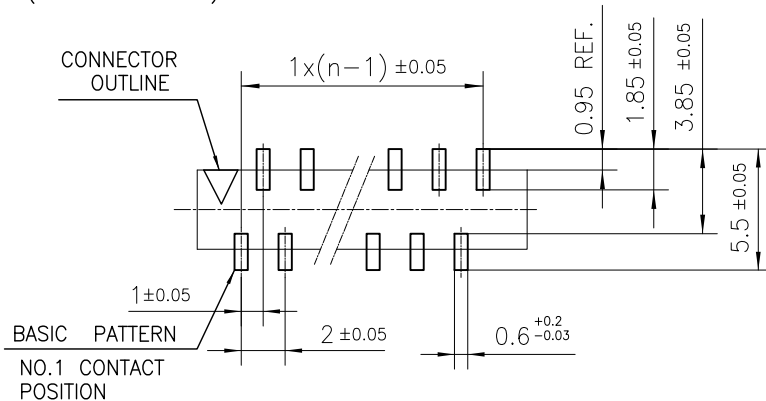
mat'l. code				surface ISO 1302 <input checked="" type="checkbox"/>		tolerance ISO 406 <input checked="" type="checkbox"/> ISO 1101		projection		product family 580F				CODE JP	
ltr	ecn no	dr	date	tolerances unless otherwise specified				mm		title CAT NO. TABLE FOR 1mm SPACING SMT CONNECTOR (Cat. No. : HFW__S-2ST__HLF)					
A		N.S	2016-12-13	angles	linear	--		scale NON		dwg no 10142181				sheet 2 of 7 size A4	
B	ELX-J-32765	N.S	2019-02-25	0°±x'		--				type Product Customer Drawing				Rev. B	
sheet index		revision sheet													



n : NO. OF CONTACTS

PT. NO.	PARTS NAME	MATERIAL	Q'TY	NOTE
1	HOUSING (HALOGEN FREE)	LCP RESIN GLASS REINFORCED (UL94V-0)	1	COLOR : BLACK
2	CONTACT	PHOSPHOR BRONZE	n	Ni UNDER Sn PLATING (LEAD FREE)

RECOMMENDED PC BOARD LAYOUT
(COMPONENT SIDE)



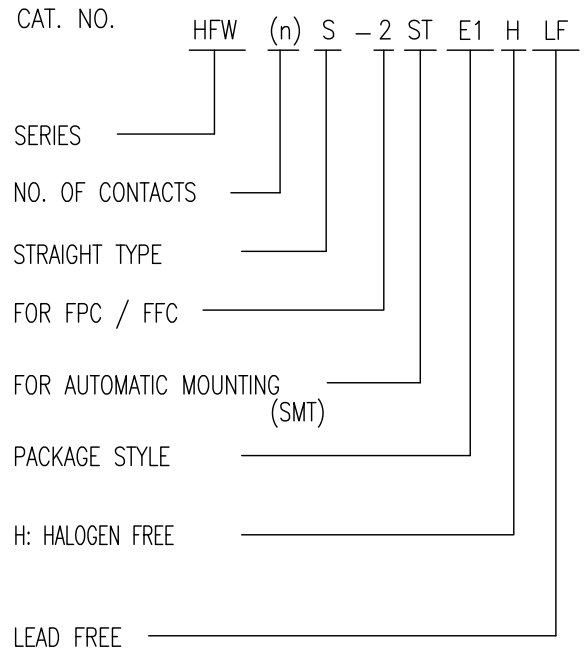
NOTES

- THIS PRODUCT IS THE CONNECTOR DESIGNED TO TERMINATE FPC/FFC AND COPES WITH AUTOMATIC MOUNTING (SMT).
- FLATNESS OF CONTACT TERMINAL MUST BE WITHIN TOLERANCE IN Z PORTION DETAILED DRAWING.
- THIS DIMENSION IS SPACE FOR THE NOZZLE OF MOUNTER.
- THIS PRODUCT MEETS EUROPEAN UNION DIRECTIVES AND OTHER COUNTRY REGULATIONS AS DESCRIBED IN GS-22-008
- THE HOUSING WILL WITHSTAND EXPOSURE TO 260°C PEAK TEMPERATURE FOR 10 SECONDS IN A REFLOW SOLDERING OVEN.

mat'l. code				surface ISO 1302 ✓		tolerance ISO 406 ISO 1101		projection 		product family 580F		CODE JP	
ltr ecn no dr date				tolerances unless otherwise specified		mm		title		1mm SPACING SURFACE MOUNT FPC/FFC CONNECTOR (Cat. No. : HFW__S-2ST__HLF)			
A N.S. 2016-12-13				angles		±0.2		scale NON		dwg no sheet 3 of 7 size			
B ELX-J-32765 N.S. 2019-02-25				linear		±0.2		Amphenol FCI		10142181 A4			
				0°±x'		±0.2				type Product Customer Drawing			
dr N.Sasame 2019-02-25				engr N.Sasame 2019-02-25						Rev. B			
chr H.Suzuki 2019-02-25				appd Y.Kameda 2019-02-25									
sheet index		revision sheet											

CAT. NO. & DIMENSIONS

(NOTE.4)	NO. OF CONTACTS (n)	CAT. NO. (NOTE2)	DIMENSIONS (NOTE3)		
			F ± 5	G ± 0.3	H ± 0.1
	4	HFW4S-2STE1HLF	28.4	24	—
	5	HFW5S-2STE1HLF	28.4	24	—
	6	HFW6S-2STE1HLF	28.4	24	—
	7	HFW7S-2STE1HLF	28.4	24	—
	8	HFW8S-2STE1HLF	28.4	24	—
	9	HFW9S-2STE1HLF	28.4	24	—
	10	HFW10S-2STE1HLF	28.4	24	—
	11	HFW11S-2STE1HLF	28.4	24	—
	12	HFW12S-2STE1HLF	28.4	24	—
	13	HFW13S-2STE1HLF	28.4	24	—
	14	HFW14S-2STE1HLF	36.4	32	28.4
	15	HFW15S-2STE1HLF	36.4	32	28.4
	16	HFW16S-2STE1HLF	36.4	32	28.4
	17	HFW17S-2STE1HLF	36.4	32	28.4
	18	HFW18S-2STE1HLF	48.4	44	40.4
	19	HFW19S-2STE1HLF	48.4	44	40.4
	20	HFW20S-2STE1HLF	48.4	44	40.4
	21	HFW21S-2STE1HLF	48.4	44	40.4
	22	HFW22S-2STE1HLF	48.4	44	40.4
	23	HFW23S-2STE1HLF	48.4	44	40.4
	24	HFW24S-2STE1HLF	48.4	44	40.4
	25	HFW25S-2STE1HLF	48.4	44	40.4
	26	HFW26S-2STE1HLF	48.4	44	40.4
	27	HFW27S-2STE1HLF	48.4	44	40.4
	28	HFW28S-2STE1HLF	48.4	44	40.4
	29	HFW29S-2STE1HLF	60.4	56	52.4
	30	HFW30S-2STE1HLF	60.4	56	52.4
*	31	HFW31S-2STE1HLF	60.4	56	52.4
	32	HFW32S-2STE1HLF	60.4	56	52.4
*	33	HFW33S-2STE1HLF	60.4	56	52.4



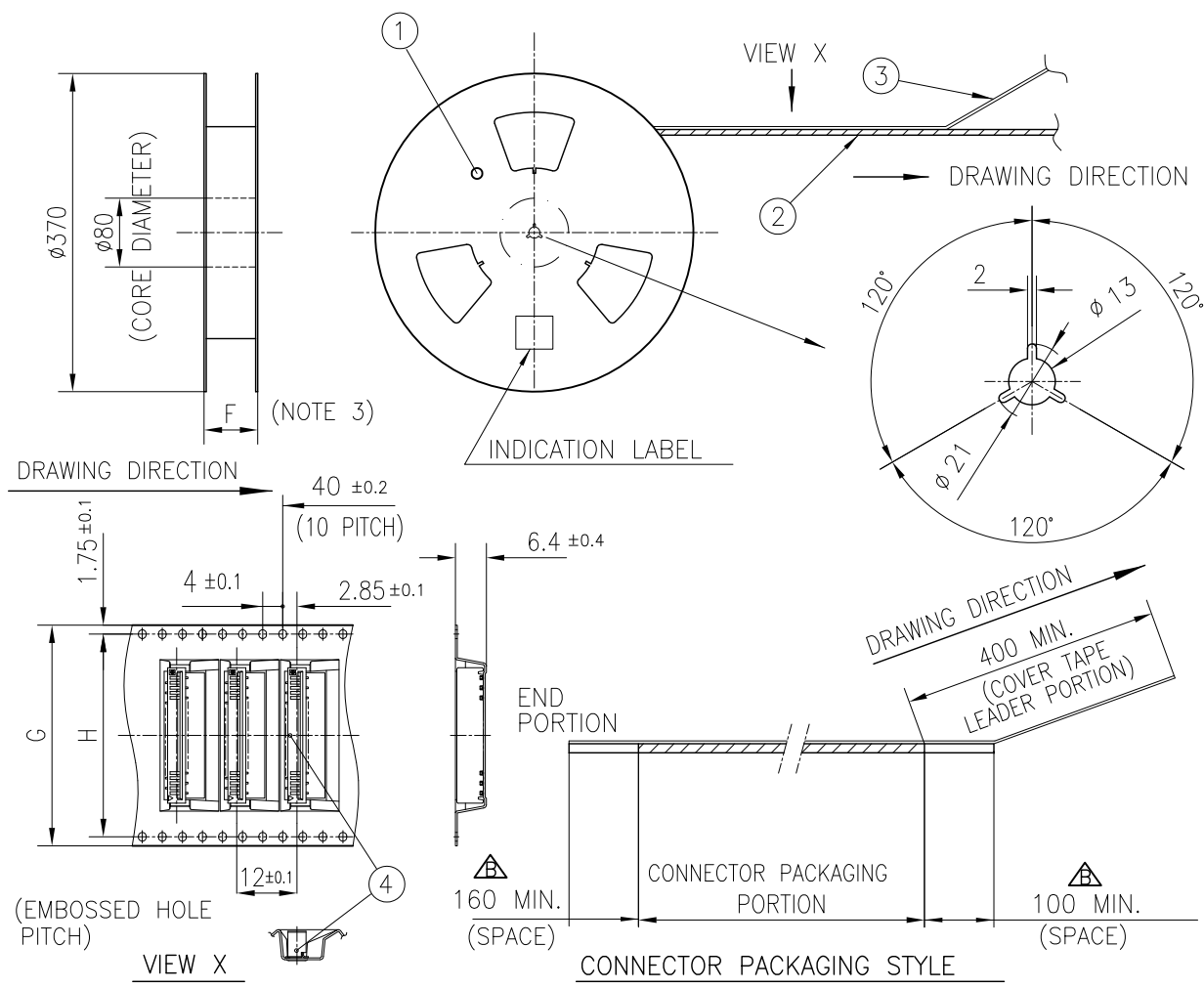
NOTES

1. THIS PRODUCT IS THE CONNECTOR DESIGNED TO TERMINATE FPC/FFC AND COPEs WITH AUTOMATIC MOUNTING (SMT).
2. THIS CATALOG NO. INDICATES PLASTIC TAPE PACKAGED CONNECTOR.
3. SEE PART DRAWINGS FOR DIMENSIONS F~H.
4. PLEASE CONSULT US IN CASE OF USING PARTS WITH * MARK.

Amphenol FCI

© 2016 AFCl

mat'l. code				surface ISO 1302 <input checked="" type="checkbox"/>		tolerance ISO 406 <input checked="" type="checkbox"/> ISO 1101		projection		product family 580F			CODE JP		
ltr	ecn no	dr	date	tolerances unless otherwise specified				mm		title CAT. NO. TABLE FOR PLASTIC TAPE PACKAGED 1mm SPACING SMT CONN. (CAT.No.HFW__S-2STE1HLF)					
A		N.S	2016-12-13	angles	linear	--		scale NON		dwg no 10142181 sheet 4 of 7 size A4					
B	ELX-J-32765	N.S	2019-02-25	0°±x'		--				type Product Customer Drawing					
				dr	N.Sasame	2019-02-25				Rev. B					
				engr	N.Sasame	2019-02-25									
				chr	H.Suzuki	2019-02-25									
				appd	Y.Kameda	2019-02-25									
sheet index		revision sheet													



PT. NO.	PARTS NAME	CAT. NO.	MATERIAL	Q'TY	NOTE
1	REEL	_____	CARDBOARD	1	COLOR:GRAY
2	PLASTIC (EMBOSS) TAPE	_____	△ PS or APET	_____	COLOR:TRANSPARENCY
3	COVER	_____	△ POLYESTER, POLYETHYLENE	_____	COLOR:TRANSPARENCY
4	CONNECTOR	HFW__S-2ST__HLF	SEE ATTACHED DWG.	1000	_____

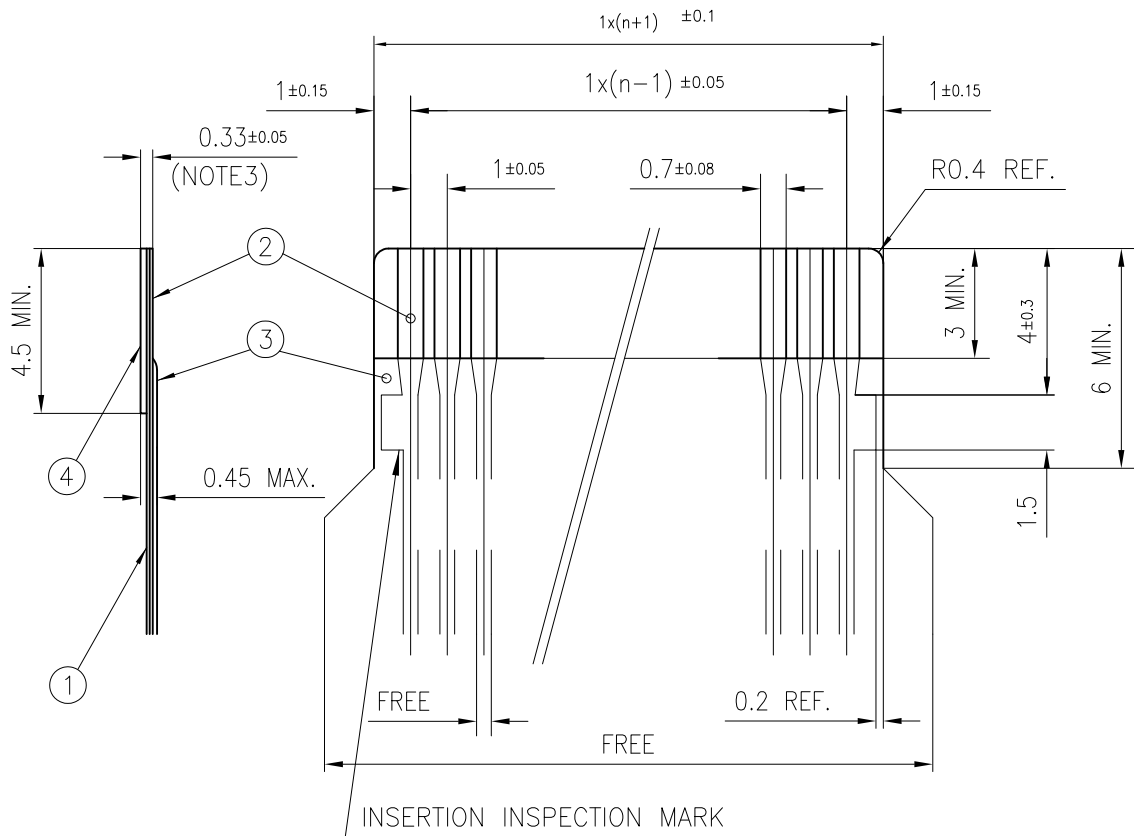
NOTES

- THIS IS PLASTIC TAPE PACKAGED CONNECTOR USED FOR FPC/FFC AND COPES WITH AUTOMATIC MOUNTING (SMT).
- SEE JIS C 0806 (PACKING OF ELECTRONIC COMPONENTS ON CONTINUOUS TAPES (SURFACE MOUNTING DEVICES)) FOR SHAPE AND DIMENSIONS OF PLASTIC (EMBOSS) TAPE AND REEL.
- F DIMENSION IS PORTION OF THE CORE.

mat'l. code		surface ISO 1302 ✓		tolerance ISO 406 ISO 1101		projection		product family 580F		CODE JP	
ltr		ecn no		dr		date		tolerances unless otherwise specified		title	
A				N.S		2016-12-13		±5		PLASTIC TAPE PACKAGED 1mm SPACING SMT CONNECTOR (Cat. No. : HFW__S-2STE1HLF)	
B		ELX-J-32765		N.S		2019-02-25		±5		dwg no	
								±5		sheet 5 of 7	
				dr		N.Sasame		2019-02-25		size	
				engr		N.Sasame		2019-02-25		10142181	
				chr		H.Suzuki		2019-02-25		A4	
				appd		Y.Kameda		2019-02-25		type Product Customer Drawing	
sheet index		revision sheet								Rev. B	

RECOMMENDED CABLE (FPC)

n : NO. OF CONDUCTORS



PT. NO.	DISCRIPTION	MATERIAL	THICKNESS (°m)
1	BASE FILM	POLYIMIDE OR POLYESTER OR EQUIVALENT	25
2	CONDUCTOR	COPPER FOIL(PLATING : SOLDER 1°m MIN.)	35
3	OVERLAY	POLYIMIDE OR POLYESTER OR EQUIVALENT	—
4	SUPPORTING TAPE	POLYESTER OR POLYIMIDE OR EQUIVALENT	188

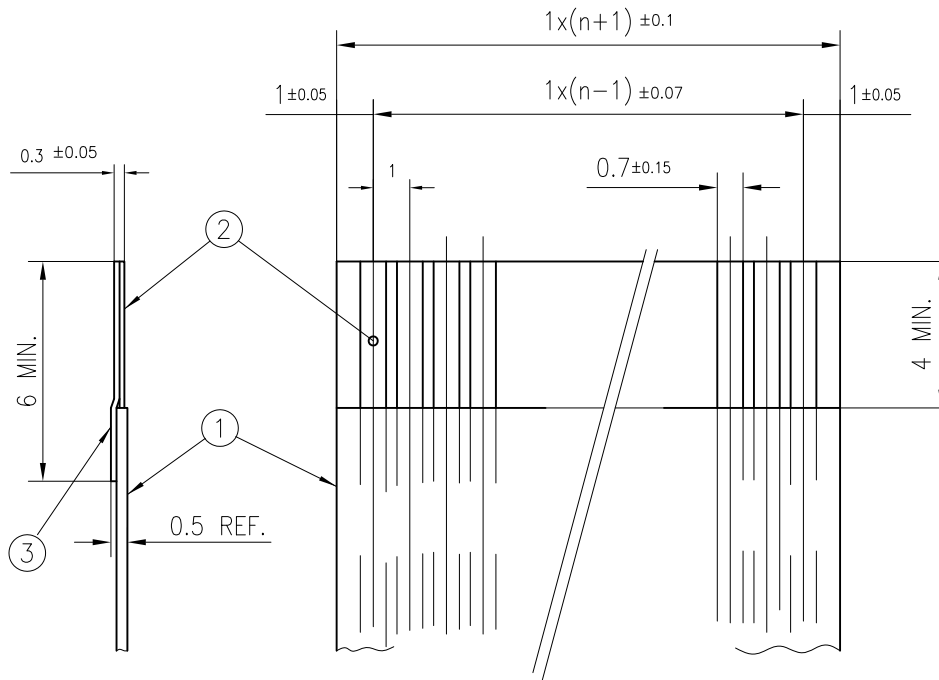
NOTES

1. NO BURR AT EACH PORTION.
2. NO PEELING IN COMMON USE.
3. TOTAL THICKNESS LIMIT OF EACH MATERIAL (INCLUDING ADHESIVE AGENT) IS SPECIFIED.

mat'l. code				surface ISO 1302 ✓		tolerance ISO 406 ISO 1101		projection 		product family 580F		CODE JP	
ltr	ecn no	dr	date	tolerances unless otherwise specified						title			
A		N.S	2016-12-13	angles		linear		mm		RECOMMENDED CABLE (CAT.No.HFW__S-2ST__)			
B	ELX-J-32765	N.S	2019-02-25	0°±x'		--		scale NON		dwg no 10142181 sheet 6 of 7 size A4			
				dr	N.Sasame	2019-02-25			type Product Customer Drawing				
				engr	N.Sasame	2019-02-25			Rev. B				
				chr	H.Suzuki	2019-02-25							
				appd	Y.Kameda	2019-02-25							
sheet index		revision sheet											

RECOMMENDED CABLE (FFC)

n : NO. OF CONDUCTOR



PT. NO.	DESCRIPTION	MATERIAL	NOTE
1	INSULATOR	FLAME RESISTING POLYESTER OR EQUIVALENT	_____
2	CONDUCTOR	COPPER FOIL	PLATING:TIN OR SOLDER 1 ^m MIN.
3	SUPPORTING TAPE	FLAME RESISTING POLYESTER OR EQUIVALENT	_____

NOTES

1. NO BURR AT EACH PORTION.
2. NO PEELING IN COMMON USE.

mat'l. code				surface ISO 1302 ✓		tolerance ISO 406 ISO 1101		projection 		product family 580F		CODE JP	
ltr	ecn no	dr	date	tolerances unless otherwise specified				mm ←→ scale NON		title RECOMMENDED CABLE (CAT.No.HFW__S-2ST__)			
A		N.S	2016-12-13	angles	linear	--							
B	ELX-J-32765	N.S	2019-02-25	0°±x'	--								
		dr	N.Sasame		2019-02-25				dwg no		sheet 7 of 7		size
		engr	N.Sasame		2019-02-25				10142181				A4
		chr	H.Suzuki		2019-02-25				type		Product Customer Drawing		
		appd	Y.Kameda		2019-02-25								Rev.
sheet index		revision sheet										B	