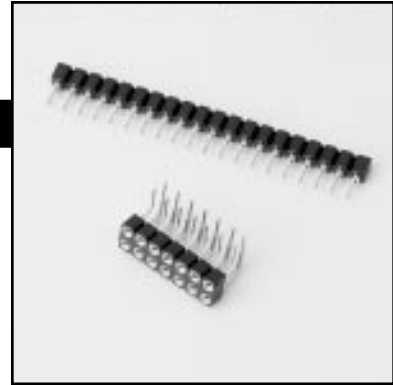


# Series: SBU, DBU

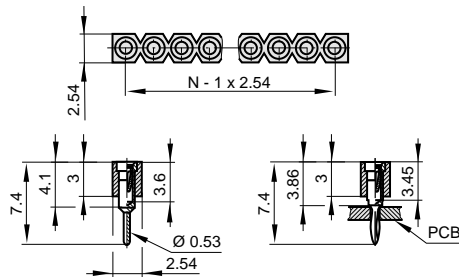
## Low Profile Machined Female Header



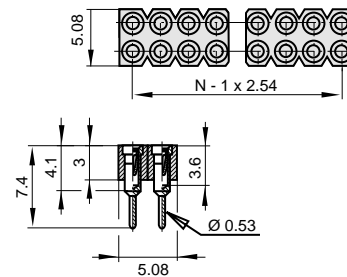
- ❖ Insertion depth, 2.4 mm min. - 3.9 mm max.
- ❖ Insertion diameter, 0.40 mm min. - 0.56 mm max.
- ❖ Six finger clip with funnel design entry
- ❖ Side and end stackable
- ❖ Single row 1 - 64 positions
- ❖ Dual row 4 - 64 positions

### Ordering examples:

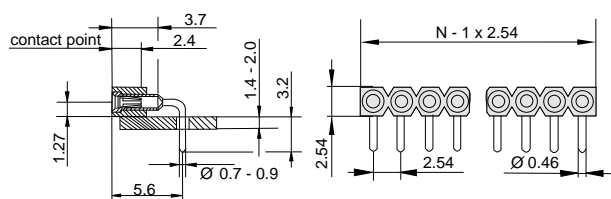
#### SBU - 32 0 Z



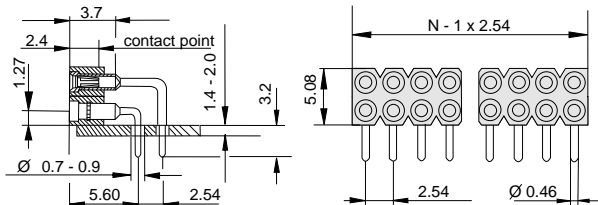
#### DBU - 64 0 Z



#### SBU - 32 0 Z - R



#### DBU - 64 0 Z - R



# Specifications

## Machined Pin Female Header Series:

**SBU**            **SBL**  
**DBU**            **DBL**

### Ratings:

|                           |                      |
|---------------------------|----------------------|
| Current for SBU, DBU      | 1A max.              |
| Current for SBL, DBL      | 3A max.              |
| Voltage                   | 10 mV - 60 V         |
| Dielectric strength       | > 1000 V (RMS)       |
| Contact resistance        | ≤ 7 mΩ               |
| Insulation resistance     | > 10 <sup>12</sup> Ω |
| Air and creepage distance | > 0.6 mm             |
| PCB thickness             | 1.6 mm - 2.0 mm      |
| PCB hole size             | .7 mm - .9 mm        |

### Material:

|                   |  |
|-------------------|--|
| Plastic           | PBT, Glass-filled, UL94V-0                               |
| Color             | Black  |
| Sleeve            | Turned brass, Flash copper plated, Nickel 2-3μm, Tin 5μm |
| Clip              | Beryllium-copper, Nickel 2-3μm, Gold 0.25μm              |
| Temperature range | -55°C / +125°C, 260°C for 5 sec. (solder bath resistant) |
| Mechanical life   | 100 cycles   |

## ORDERING PROCEDURE

    1        -        2                    3                    4        -        5    

- 1) Series
- 2) Number of Positions (see series page for available positions)
- 3) Contact style:  
    O = Solder tail
- 4) Plating:  
    Z = Gold clip/Tin sleeve  
    G = Gold clip/Gold sleeve
- 5) Series options:  
    R = Right angle

Please refer to following pages for ordering examples.