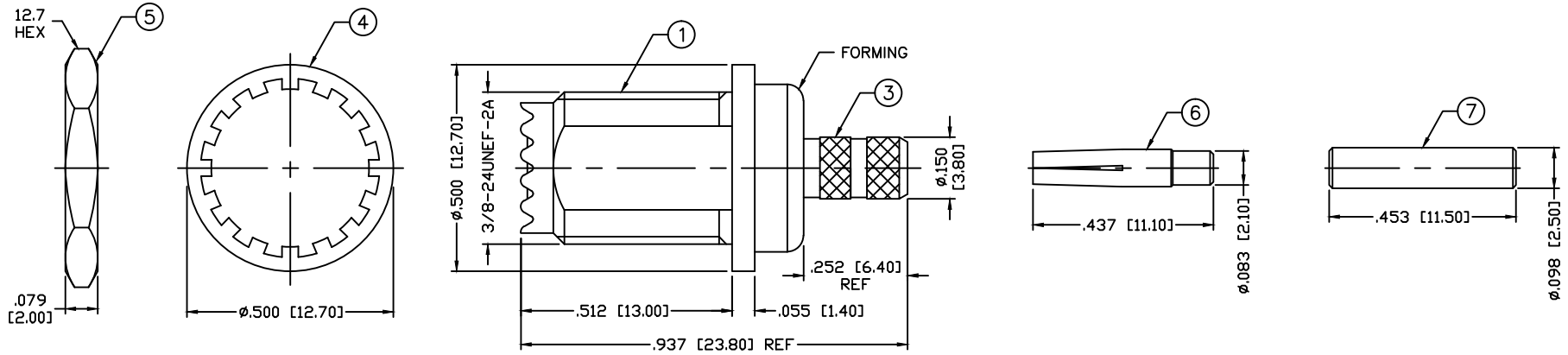


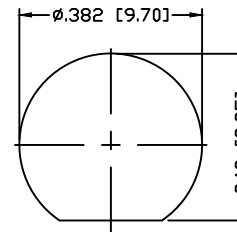
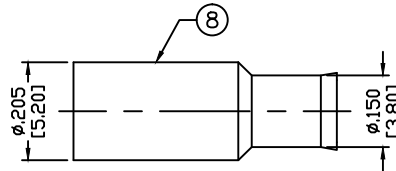
THIS DRAWING CONTAINS INFORMATION PROPRIETARY TO RF INDUSTRIES,  
 ANY UNAUTHORIZED USE OF THIS DRAWING IS EXPRESSLY PROHIBITED  
 WITHOUT WRITTEN PERMISSION FROM RF INDUSTRIES.  
 ANY VIOLATION IS PUNISHABLE UNDER U.S. COPYRIGHT LAWS.

PART NO.		RFU-617-B		
REV	DESCRIPTION	DWN	DATE	APPROVED
-	ENGINEERING RELEASE	CZS	8/25/00	JDMc

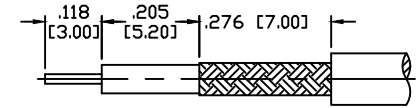


**SPECIFICATIONS:**

IMPEDANCE: 50 Ohms  
 WORKING VOLTAGE: 500 VRMS @ SEA LEVEL  
 FREQUENCY RANGE: 0-4 GHz  
 INSERTION LOSS:  $\leq$  -.2dB @ 3 GHz  
 VSWR MAX: 1.4:1 @ 3 GHz  
 FOR RG-174, 188, 188A, 316/U, ALPHA 9174, 9316,  
 BELDEN 8216, 83269, 83284, 84316 & TIMES LMR-100A CABLE



RECOMMENDED MOUNTING HOLE



RECOMMENDED STRIPPING DIMENSIONS  
 RECOMMENDED CRIMP SIZES: .178 & .068

ALL DIMENSIONS ARE REFERENCE ONLY

1	BODY	1	BRASS	NICKEL, 100 MICRO
2	INSULATOR	1	PTFE	---
3	FERRULE STUD	1	BRASS	NICKEL, 100 MICRO
4	LOCK WASHER	1	BRASS	NICKEL, 100 MICRO
5	HEX NUT	1	BRASS	NICKEL, 100 MICRO
6	CONTACT	1	P. BRONZE	GOLD, 3 MICRO
7	INSERT	1	DELRIN	---
8	FERRULE	1	STEEL	NICKEL, 100 MICRO
9				
10				
11				
12				
13				
14				
#	DESCRIPTION	QTY	MATRL	FINISH

008974		
DRAWN	C. ZUNIGA	8/25/00
CHECKED		
ORJ DRAWN	C. ZUNIGA	12/13/99
APPROVALS		DATE

UNLESS OTHERWISE SPECIFIED:  
 1. REMOVE ALL BURRS  
 2. BREAK ALL CORNERS & EDGES .005 R. MAX.  
 3. CHAMFER 1ST & LAST THREADS 45°  
 4. SURFACE ROUGHNESS 63 FINISH MIL-STD-10  
 5. DIAMETERS ON COMMON CENTERS TO BE CONCENTRIC WITHIN .002 T.I.R.  
 6. ALL DIMENSIONS ARE AFTER PLATING.

DIMENSIONS ARE IN INCHES AND [MILLIMETERS]  
 UNLESS OTHERWISE NOTED TOLERANCES ARE:  
 DECIMALS .XXX±.003 [.08]  
 .XX±.005 [.13]  
 DIAMETER .XXX±.001 [.03]  
 .XX±.003 [.08]

RF

7610 MIRAMAR RD  
 SAN DIEGO, CA 92126  
 (858) 549-6340  
 (858) 549-6345 FAX

DIVISION OF RF INDUSTRIES, LTD.

## MINI UHF JACK

BULKHEAD CRIMP, REAR MOUNT

SIZE	CABLE GROUP	DWG NO.	REV
A	B	RFU-617-B	-

SCALE: NTS      CAD FILE      OUTLINE      SHEET 1 OF 1