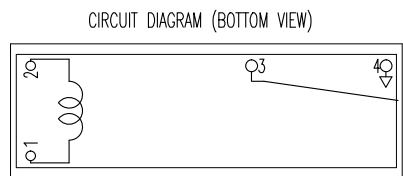
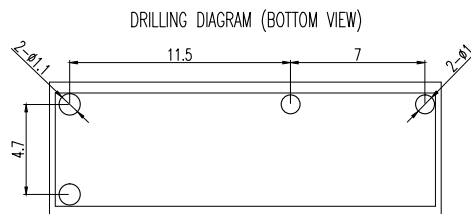
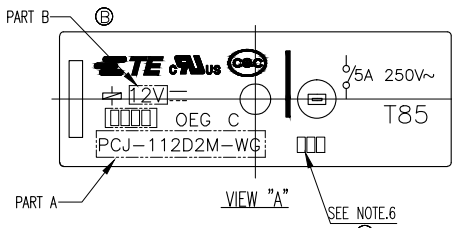
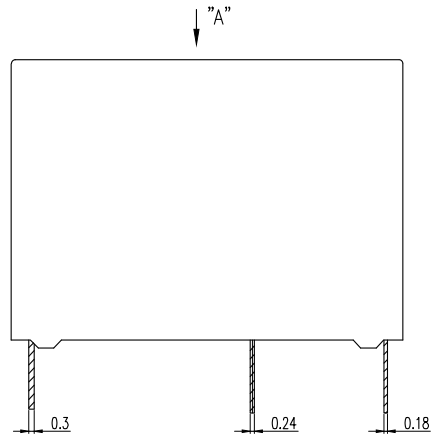
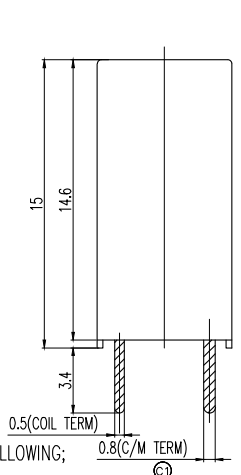


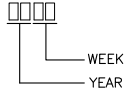
THIS DRAWING IS UNPUBLISHED. RELEASED FOR PUBLICATION
 © COPYRIGHT - By TE CONNECTIVITY ALL RIGHTS RESERVED.

| LOC | | DIST | | REVISIONS | | | |
|-----|-----|--|--|---------------|-----------|---------|--|
| P | LTR | DESCRIPTION | | DATE | DWN | APVD | |
| CI | | CHANGE THE WIDTH OF THE TERMINAL FROM 0.6MM TO 0.8MM | | ECO-14-011875 | 08-AUG-14 | Q.L B.F | |

| Diagram dimension | Tolerance |
|-------------------|-----------|
| 0.99mm max. | ±0.1mm |
| 1 - 2.99mm | ±0.2mm |
| 3mm min. | ±0.3mm |



① NOTE:
 1. LOT NO. SYSTEM AS FOLLOWING;

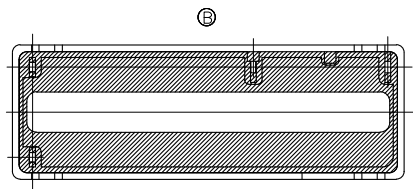


- ② ONE CHARACTER DISTINGUISH THE LINE IDENTITY, SUCH AS: A, B...
- ③ TERMINAL DIMENSION IS BEFORE SOLDER DIP.
- ④ FOR THE TIN-PLATING OF THE PINS:
 +0.1mm FOR WIDTH, THICKNESS AND DIAMETER.
 +0.5mm FOR LENGTH.
- ⑤ MARKING FROM INK CHANGE TO LASER
- ⑥ ADD LOT NO. SYSTEM AS FOLLOWING;



- I. DIGITS FOR DAY OF THE WEEK
 1...MONDAY IN THIS WEEK;
 2...TUESDAY IN THIS WEEK;

 7...SUNDAY IN THIS WEEK
- II. DIGITS FOR SHIFT OF THE DAY
 1...DAY SHIFT IN THIS DAY;
 2...NIGHT SHIFT IN THIS DAY;
- III. ONE CHARACTER DISTINGUISH THE LINE IDENTITY,
 SUCH AS: A,B,....Z



| DIMENSIONS: | | TOLERANCES UNLESS OTHERWISE SPECIFIED: | |
|-------------|--------|--|---|
| mm | | | |
| | 0 PLC | ± | - |
| | 1 PLC | ± | - |
| | 2 PLC | ± | - |
| | 3 PLC | ± | - |
| | 4 PLC | ± | - |
| | ANGLES | ± | - |
| MATERIAL | | FINISH | |
| - | | - | |

| | |
|--|------------------------|
| THIS DRAWING IS A CONTROLLED DOCUMENT. | |
| DWN: ZHENXING.FU | CHK: N.FUNAYAMA |
| APVD: HSU,CHIEN-HUI | NAME: PCJ-WG SPEC ,000 |
| PRODUCT SPEC: - | APPLICATION SPEC: - |
| WEIGHT: - | SIZE: A3 |
| CUSTOMER DRAWING | CAGE CODE: 00779 |
| | DRAWING NO: 1721348 |
| | RESTRICTED TO: - |
| | SCALE: 5:1 |
| | SHEET: 1 OF 2 |
| | REV: C1 |

| | | | |
|---------------------------|------------------|---------------------|---------------|
| TE TE Connectivity | | | |
| NAME: PCJ-WG SPEC ,000 | | RESTRICTED TO: - | |
| SIZE: A3 | CAGE CODE: 00779 | DRAWING NO: 1721348 | REV: C1 |
| CUSTOMER DRAWING | | SCALE: 5:1 | SHEET: 1 OF 2 |

4

3

2

1

THIS DRAWING IS UNPUBLISHED. RELEASED FOR PUBLICATION
 © COPYRIGHT -- By TE CONNECTIVITY ALL RIGHTS RESERVED.

| LOC | DIST | REVISIONS | | | |
|-----|------|-------------|------|-----|------|
| P | LTR | DESCRIPTION | DATE | DWN | APVD |
| HB | - | SEE SHEET 1 | - | - | - |

| No. | EC TYPE NAME | TE PART NO | DESCRIPTION | PART B | PART A |
|-----|---------------------|-------------|-------------------------------------|--------|----------------|
| N | PCJ-12402MH-WG, 000 | 1-1721348-4 | SEAL UP INSPECTION ON EVERY PRODUCT | 24V | PCJ-12402MH-WG |
| M | PCJ-11802MH-WG, 000 | 1-1721348-3 | SEAL UP INSPECTION ON EVERY PRODUCT | 18V | PCJ-11802MH-WG |
| I | PCJ-11202MH-WG, 000 | 1-1721348-2 | SEAL UP INSPECTION ON EVERY PRODUCT | 12V | PCJ-11202MH-WG |
| k | PCJ-10902MH-WG, 000 | 1-1721348-1 | SEAL UP INSPECTION ON EVERY PRODUCT | 9V | PCJ-10902MH-WG |
| j | PCJ-10602MH-WG, 000 | 1-1721348-0 | SEAL UP INSPECTION ON EVERY PRODUCT | 6V | PCJ-10602MH-WG |
| i | PCJ-10502MH-WG, 000 | 1721348-9 | SEAL UP INSPECTION ON EVERY PRODUCT | 5V | PCJ-10502MH-WG |
| h | PCJ-10302MH-WG, 000 | 1721348-8 | SEAL UP INSPECTION ON EVERY PRODUCT | 3V | PCJ-10302MH-WG |
| g | PCJ-12402M-WG, 000 | 1721348-7 | | 24V | PCJ-12402M-WG |
| f | PCJ-11802M-WG, 000 | 1721348-6 | | 18V | PCJ-11802M-WG |
| e | PCJ-11202M-WG, 000 | 1721348-5 | | 12V | PCJ-11202M-WG |
| d | PCJ-10902M-WG, 000 | 1721348-4 | | 9V | PCJ-10902M-WG |
| c | PCJ-10602M-WG, 000 | 1721348-3 | | 6V | PCJ-10602M-WG |
| b | PCJ-10502M-WG, 000 | 1721348-2 | | 5V | PCJ-10502M-WG |
| a | PCJ-10302M-WG, 000 | 1721348-1 | | 3V | PCJ-10302M-WG |
| No. | EC TYPE NAME | TE PART NO | DESCRIPTION | PART B | PART A |

RELAY TYPE

| 94V-0 | | Sn-Ag-Cu | SOLDER | 18 |
|------------------|------------|-----------|--------------------------------|------|
| | | PBT | CASE | 17 |
| | | UV | SEAL(CASE) JUST FOR WASH TIGHT | 16 |
| | | EPOXY | SEAL(CASE AND BASE) | 15 |
| | | 3UEW | MAGNETIC WIRE | 14 |
| 94V-0 | | PBT | CARD | 13 |
| | | Ag ALLOY | STATIONARY CONTACT | 12 |
| | SOLDER DIP | Cu ALLOY | STATIONARY TERMINAL | 11 |
| | | Ag ALLOY | MOVABLE CONTACT | 10 |
| | SOLDER DIP | Cu ALLOY | MOVABLE SPRING | 9 |
| 94V-0 | | PBT | BASE | 8 |
| | | STAINLESS | HINGE SPRING | 7 |
| | NIP | STEEL | ARMATURE | 6 |
| | NIP | STEEL | CORE | 5 |
| | NIP | STEEL | YOKE | 4 |
| | SOLDER DIP | Cu ALLOY | COIL TERMINAL B | 3 |
| | SOLDER DIP | Cu ALLOY | COIL TERMINAL A | 2 |
| 94V-0 | | PBT | BOBBIN | 1 |
| INCOMBUSTIBILITY | TREATMENT | MATERIAL | DESCRIPTION | ITEM |

THIS DRAWING IS A CONTROLLED DOCUMENT.

DIMENSIONS: mm



TOLERANCES UNLESS OTHERWISE SPECIFIED:
 0 PLC ±-
 1 PLC ±-
 2 PLC ±-
 3 PLC ±-
 4 PLC ±-
 ANGLES ±-
 FINISH -

MATERIAL -

DRAWN: ZHENXING.FU
 CHK: N.FUNAYAMA
 APVD: HSU,CHIEN-HUI
 PRODUCT SPEC: -
 APPLICATION SPEC: -
 WEIGHT: -
 CUSTOMER DRAWING

NAME: PCJ-WG SPEC ,000
 SIZE: A3 CAGE CODE: 00779 DRAWING NO: C=1721348 RESTRICTED TO: -
 SCALE: 5:1 SHEET: 2 OF 2 REV: C1