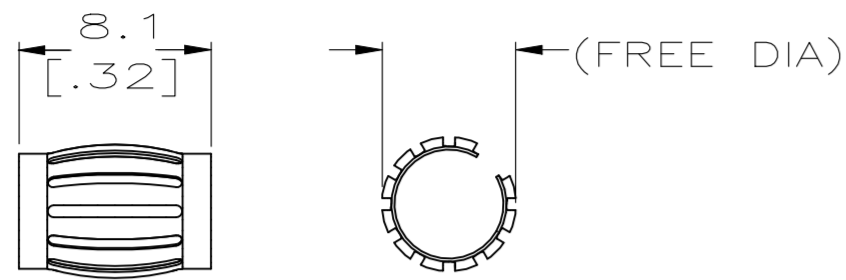
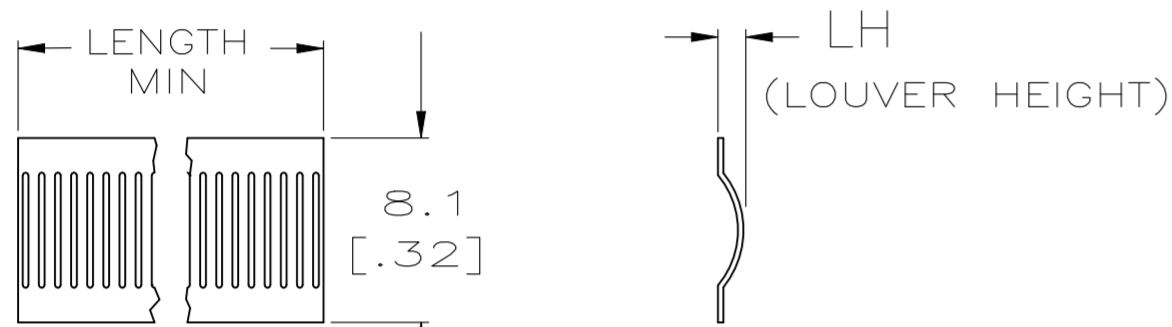


THIS DRAWING IS UNPUBLISHED. RELEASED FOR PUBLICATION  
 © COPYRIGHT - By - ALL RIGHTS RESERVED.

REVISIONS				
P	LTR	DESCRIPTION	DATE	APVD
U		REVISED PER ECR-21-003767	31MAR2021	LP MZ



STYLE B  
(MALE)



STYLE C  
(STRIP)

- 1 FINISH-SILVER PLATE 200 μIN MIN THICK.
- 2 FINISH-NICKEL PLATE 40 μIN MIN THICK.
- 3 FINISH-GOLD PLATE 10 μIN MIN THICK.
- 4 FINISH-GOLD PLATE 50 μIN MIN THICK.
- 5 FINISH-CADMIUM PLATE 300 μIN MIN THICK.
- 6 FINISH-NICKEL PLATE 100 μIN MIN THICK.
- 7 FINISH-TIN PLATE 300 μIN MIN THICK.
- 8
- 9
- 10
- 11 PLATING NOTES ARE TO BE INTERPRETED AS FOLLOWS, 6-8 AS 6 OVER 8.
- 12 PRODUCT IS SOLD BY THE FOOT.
- 13 12 FOOT STRIP WOUND TO A ONE INCH INSIDE DIAMETER.
- 14 MATERIAL-BeCu (CDA172).
- 15 MATERIAL-STAINLESS STEEL.
- 16 CUT LENGTH 508.0 [20.00] APPROXIMATELY 714 LOUVERS.
- 17 BAND WIDTH .310±.005 FOR P/N 6-192042-6.
- 18 FINISH - GOLD PLATE 30μIN MIN THICK.
- 19 OVERLAPPED WITH GAP.
- 20 OBSOLETE PARTS: OBSOLETE CIS STREAMLINING PER D.RENAUD/D.SINISI
- 21 PRILIMINARY PART

PLC	THICKNESS	FINISH	(FREE DIA)	MAT'L	MATING HOLE	REF	NUM LOUV	PLATING	MAT'L THK	REF	PART NO.		
OBSOLETE	[.022]	--	B	[.40]	14	9.5	[.375]	36	3-2	0.20	[.008]	04133	4-192042-7
OBSOLETE	[.022]	--	B	[.40]	14	9.5	[.375]	36	1-2	0.15	[.006]	04054	4-192042-6
OBSOLETE	[.022]	--	B	[.40]	14	9.5	[.375]	36	5	0.15	[.006]	04100	4-192042-5
OBSOLETE	[.022]	--		[.40]	14	9.5	[.375]	36	UNPL	0.15	[.006]	04156	4-192042-4
OBSOLETE	[.022]	--		[.40]	14	9.5	[.375]	36	UNPL	0.15	[.006]	04101	4-192042-3
OBSOLETE	[.024]	--	B	[.30]	14	7.1	[.280]	26	3-2	0.15	[.006]	04132	4-192042-2
OBSOLETE	[.024]	--		[.30]	14	7.1	[.280]	26	UNPL	0.15	[.006]	04131	4-192042-1
OBSOLETE	[.024]	--	B	[.30]	14	7.1	[.280]	26	3-2	0.15	[.006]	04048	4-192042-0
OBSOLETE	[.024]	--		[.30]	14	7.1	[.280]	26	UNPL	0.15	[.006]	04173	3-192042-9
OBSOLETE	[.026]	--	B	[.23]	14	5.5	[.216]	19	6	0.20	[.008]	04043	3-192042-8
OBSOLETE	[.026]	--	B	[.23]	14	5.5	[.216]	19	3-2	0.20	[.008]	04135	3-192042-7
OBSOLETE	[.026]	--		[.23]	14	5.5	[.216]	19	1-2	0.20	[.008]	04039	3-192042-6
OBSOLETE	[.032]	--	B	[.20]	14	4.7	[.185]	15	3-2	0.15	[.006]	04134	3-192042-5
OBSOLETE	[.032]	--		[.20]	14	4.7	[.185]	15	UNPL	0.15	[.006]	04034	3-192042-4
OBSOLETE	[.022]	--	B	[.17]	14	4.0	[.157]	13	4-2	0.15	[.006]	04033	3-192042-3
OBSOLETE	[.022]	--	B	[.17]	14	4.0	[.157]	13	3-2	0.15	[.006]	04032	3-192042-2
OBSOLETE	[.022]	--	B	[.17]	14	4.0	[.157]	13	6	0.15	[.006]	04063	3-192042-1
OBSOLETE	[.022]	--	B	[.17]	14	4.0	[.157]	13	1-2	0.15	[.006]	04130	3-192042-0
OBSOLETE	[.022]	--	B	[.15]	14	3.5	[.138]	12	3-2	0.15	[.006]	04155	2-192042-9
OBSOLETE	[.022]	--	B	[.14]	14	3.0	[.118]	10	3-2	0.15	[.006]	04088	2-192042-8
OBSOLETE	[.022]	--	B	[.14]	14	3.0	[.118]	10	UNPL	0.15	[.006]	04087	2-192042-7
OBSOLETE	[.022]	--	B	[.13]	14	2.8	[.110]	10	3-2	0.12	[.005]	04089	2-192042-6
OBSOLETE	[.022]	--	B	[.13]	14	2.5	[.098]	9	3-2	0.15	[.006]	04026	2-192042-5
OBSOLETE	[.026]	--	B	[.13]	14	2.3	[.091]	9	3-2	0.20	[.008]	04022	2-192042-4
OBSOLETE	[.022]	--	B	[.11]	14	2.0	[.080]	6	6	0.15	[.006]	04018	2-192042-3
OBSOLETE	[.022]	--		[.11]	14	2.0	[.080]	6	3-2	0.15	[.006]	04021	2-192042-2
OBSOLETE	[.026]	--	B	[.11]	14	2.0	[.080]	6	3-2	0.12	[.005]	04016	2-192042-1
OBSOLETE	[.026]	--	B	[.11]	14	2.0	[.080]	6	6	0.12	[.005]	04014	1-192042-9
OBSOLETE	[.020]	--	B	[.10]	14	2.0	[.080]	6	6	0.10	[.004]	04012	1-192042-8
OBSOLETE	[.020]	--	B	[.10]	14	2.0	[.080]	6	UNPL	0.10	[.004]	04011	192042-7
OBSOLETE	[.026]	NOTE 13	C	--	14	--	--	3-2	0.12	[.005]	04152	1-192042-6	
OBSOLETE	[.028]	NOTE 12	C	--	14	--	--	3-2	0.20	[.008]	04171	1-192042-5	
OBSOLETE	[.028]	NOTE 12	C	--	14	--	--	1-2	0.20	[.008]	04219	1-192042-4	
OBSOLETE	[.028]	NOTE 12	C	--	14	--	--	UNPL	0.20	[.008]	04153	1-192042-3	
OBSOLETE	[.026]	NOTE 12	C	--	14	--	--	3-2	0.15	[.006]	04150	1-192042-2	
OBSOLETE	[.026]	NOTE 12	C	--	14	--	--	1-2	0.15	[.006]	04151	1-192042-1	
OBSOLETE	[.026]	NOTE 12	C	--	14	--	--	UNPL	0.15	[.006]	04175	1-192042-0	
OBSOLETE	[.026]	NOTE 12	C	--	14	--	--	3-2	0.15	[.006]	04127	192042-9	
OBSOLETE	[.026]	NOTE 12	C	--	14	--	--	1-2	0.15	[.006]	04160	192042-8	
OBSOLETE	[.026]	NOTE 12	C	--	14	--	--	UNPL	0.20	[.008]	04161	192042-7	
OBSOLETE	[.026]	NOTE 12	C	--	14	--	--	3-2	0.15	[.006]	04003	192042-6	
OBSOLETE	[.026]	NOTE 12	C	--	14	--	--	1-2	0.15	[.006]	04217	192042-5	
OBSOLETE	[.026]	NOTE 12	C	--	14	--	--	UNPL	0.15	[.006]	04085	192042-4	
OBSOLETE	[.026]	NOTE 12	C	--	14	--	--	1-2	0.12	[.005]	04141	192042-3	
OBSOLETE	[.026]	NOTE 12	C	--	14	--	--	UNPL	0.12	[.005]	--	192042-2	
OBSOLETE	[.016]	NOTE 12	C	--	15	--	--	UNPL	0.12	[.005]	04181	192042-1	

THIS DRAWING IS A CONTROLLED DOCUMENT.

DWN RA JAYNE 06-12-92  
 CHK J.TURNER 07-21-93  
 APVD S.SIEGRIST 07-21-93

TE Connectivity

CONTACT BAND, MALE

SIZE A2 CAGE CODE 00779 DRAWING NO C=192042 RESTRICTED TO --

SCALE 1:1 SHEET 1 of 2 REV U

CUSTOMER DRAWING

