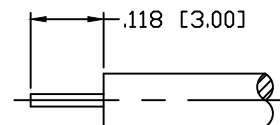
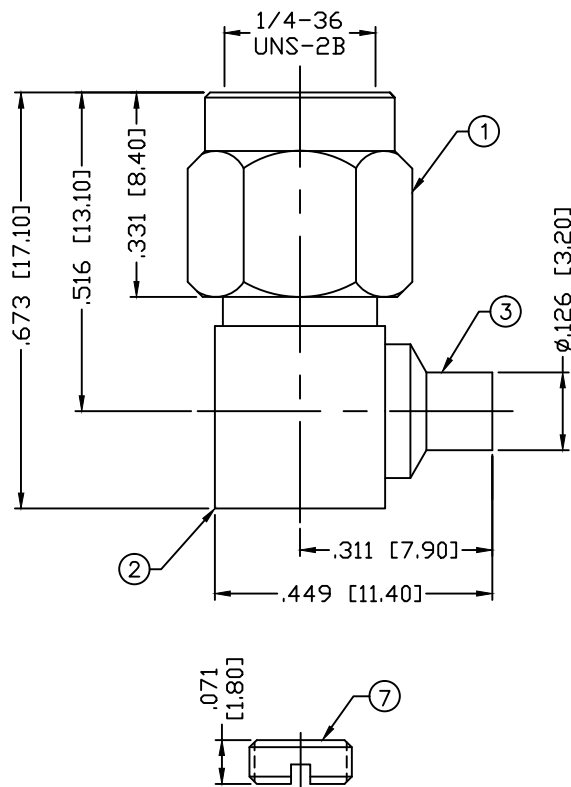


PART NO.

RSA-3510-085

REV	DESCRIPTION	DWN	DATE	APPROVED
B	UPDATED PLATING SPEC'S	JDM	12/16/03	JDMc



RECOMMENDED STRIPPING DIMENSIONS

SPECIFICATIONS:

IMPEDANCE: 50 Ohms

FREQUENCY RANGE: 0-12.4 GHz

INSERTION LOSS(dB): $0.04 \times \sqrt{f(\text{GHz})}$

VSWR: 1.3 MAX.

WORKING VOLTAGE: 500 V rms Max. @ Sea Level

INSULATION RESISTANCE: 5000 MegOhms

TEMPERATURE RANGE: -65°C TO 85°C

FOR .085 SEMI RIGID, RG-405/U & BELDEN 1671A CABLE

#	DESCRIPTION	QTY	MATERIAL	FINISH
8	GASKET	1	RUBBER	---
7	SCREW CAP	1	BRASS	NICKEL, 80 μ "
6	PIN	1	BRASS	GOLD, 50 μ "
5	RETAINING RING	1	Be.Cu.	---
4	INSULATOR	1	PTFE	---
3	PRESS BODY	1	BRASS	NICKEL, 80 μ "
2	BODY	1	BRASS	NICKEL, 80 μ "
1	SHELL	1	BRASS	NICKEL, 80 μ "
#	DESCRIPTION	QTY	MATERIAL	FINISH

CUSTOMER
OUTLINE DRAWINGALL DIMENSIONS
ARE REFERENCE ONLYUNLESS OTHERWISE SPECIFIED:
DIMENSIONS ARE IN INCHES
AND [MILLIMETERS]

DRAWN	C. ZUNIGA	7/5/01
CHECKED		
ORJ DRAWN	K. MAXWELL	10/9/97

**RoHS
COMPLIANT**

PROPRIETARY AND CONFIDENTIAL
THIS DRAWING CONTAINS
INFORMATION PROPRIETARY TO
RF INDUSTRIES. ANY
UNAUTHORIZED USE OF THIS
DRAWING IS EXPRESSLY
PROHIBITED WITHOUT WRITTEN
PERMISSION FROM RF
INDUSTRIES. ANY VIOLATION IS
PUNISHABLE UNDER U.S.
COPYRIGHT LAWS.

RFconnectors
DIVISION OF RF INDUSTRIES, LTD.

7610 MIRAMAR RD.
SAN DIEGO, CA 92126
(858) 549-6340
(858) 549-6345 FAX

SMA PLUG
RIGHT ANGLE, SOLDER

SIZE	CABLE GROUP	DWG NO.	REV
A	SR1	RSA-3510-085	B
SCALE:	ENGINEERING ID:	SHEET 1 OF 1	
NTS	008974		