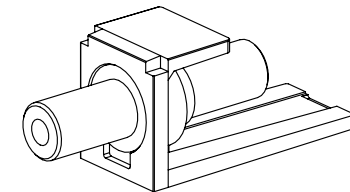
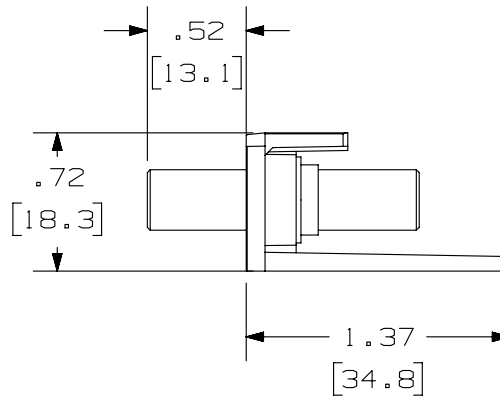
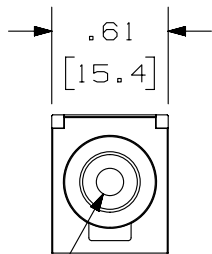
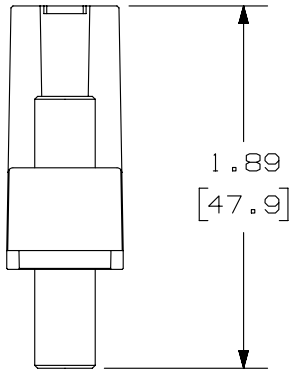


THIS COPY IS PROVIDED ON A RESTRICTED BASIS AND IS NOT TO BE USED IN ANY WAY DETRIMENTAL TO THE INTERESTS OF PANDUIT CORP.

| PANDUIT P/N | WEIGHT |
|-------------|----------------------------------|
| CM35MSC**Y | .08 LB/10 PCS (37.5 g/10 PCS) |



NOTES:

- SEE CURRENT CATALOG FOR ADDITIONAL PART NUMBER SUFFIXES TO INDICATE COLOR AND OR PACKAGE QUANTITY.
- SEE CATALOG FOR COMPLETE LIST OF PARTS APPLICABLE FOR USE WITH THIS PART.
- DIMENSIONS IN PARENTHESSES ARE IN METRIC.
- PART INCLUDES:
1- MODULE BASE
1- 3.5mm (1/8") HEAD PHONE JACK COUPLER (ASSEMBLED TO MODULE BASE)

| | | | |
|---|--|------------------------|--|
| PART NUMBER | | CM35MSC**Y | |
| TITLE | | | |
| MINI-COM 3.5mm (1/8") HEAD PHONE JACK COUPLER | | MODULE | |
| CUSTOMER DRAWING | | | |
| ITEM REVISION NAME | | M02479HF/00 | |
| DATASET FILE NAME | | M02479HF_DC190/00B | |
| UNLESS OTHERWISE SPECIFIED, DIMENSIONAL TOLERANCES ARE: IN [mm] | | MATERIAL: | |
| .x ± .03 [.8] | | MODULE: ABS | |
| .xxx ± .010 [.3] | | CONNECTOR: ZINC PLATED | |
| ANGLES ± | | DRAWING NUMBER: | |
| | | 02479-190 | |
| DRAWN BY | | SCALE | |
| JSP | | NONE | |
| DATE | | SHT 1 OF 1 | |
| 4-25-06 | | A | |
| CHK | | SIZE | |
| MJD | | A | |

| REV | DATE | BY | CHK | APR | DESCRIPTION | ECN |
|-----|---------|-----|------|-----|---------------------------------|-----------|
| 1 | 4/30/14 | JSP | REFR | MMR | A. REVISED DRAWING TITLE BLOCK. | 02479-190 |
| R | 4-25-06 | JSP | MJD | MJD | RELEASED TO PRODUCTION | 02479-190 |

D10100DA/14