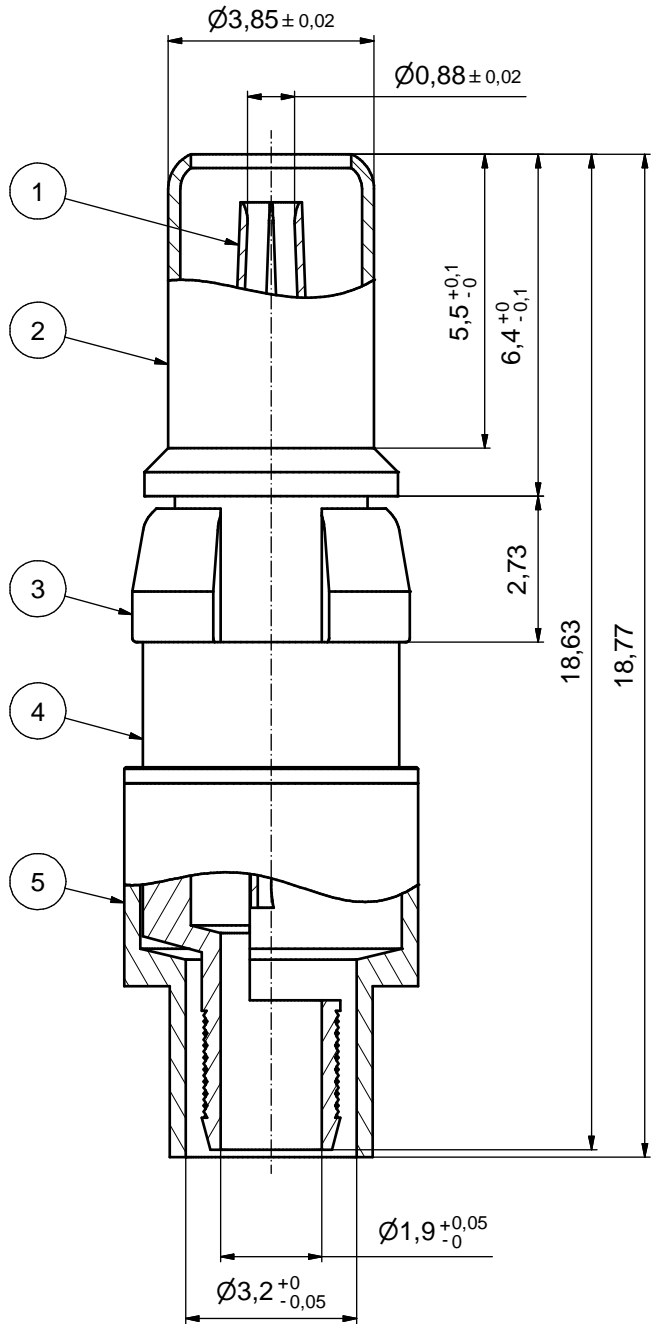
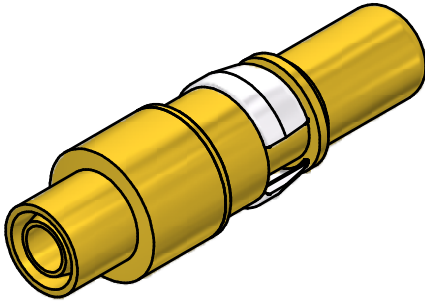
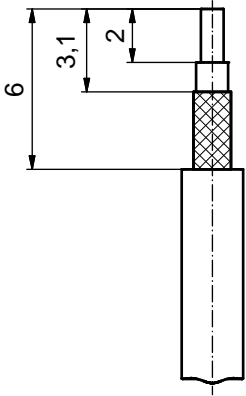


STRIPPING DIMENSIONS



ASSEMBLY TOOLING: (b)

1. CENTER CONTACT:
SOLDERED
2. OUTER CONDUCTOR:
SOLDERED OR CRIMPED
USE CRIMP TOOL: 360X10519X
WITH TOOL INSERT: 360X11019X
INSERT CAVITY B: HEX 3.25 / .128"

(b)

Part no.	Finish Pos.1	Finish Pos.2	Finish Pos.3	Finish Pos. 4/5
131A30019X	GOLD FLASH over NICKEL	GOLD FLASH over NICKEL	NICKEL PLATED	GOLD FLASH over NICKEL
131C30019X	min. 30µin HARD GOLD over min. 50µin NICKEL	min. 30µin HARD GOLD over min. 50µin NICKEL	NICKEL PLATED	GOLD FLASH over NICKEL
131J30019X	min. 50µin HARD GOLD over min. 50µin NICKEL	min. 30µin HARD GOLD over min. 50µin NICKEL	NICKEL PLATED	GOLD FLASH over NICKEL

RoHS compliant

THIS DRAWING MAY NOT BE COPIED OR REPRODUCED IN ANY WAY, AND MAY NOT BE PASSED ON TO A THIRD PARTY WITHOUT WRITTEN PERMISSION. OWNERSHIP AND COPYRIGHT OF CONEC GmbH DO NOT ALTER CAD DRAWING BY HAND	tolerance		dim. in mm		scale: 10:1 (5:1)	
					material: see partlist	
			drawn 10.07.15 Henneboel appd. 10.07.15 Lehmenkühler		title: COAXIAL CONTACT PLUG 75 OHM	
			norm		center contact solder, outer contact for crimp termination	
	4 x b		Ä5716 10.07.2015 K.H.		d-old 13K2IU9A	
a		Original		dwg no: (b) 13K1A5011		
rev. description		date name		part no: see table		
				DIN-A3 sh: 1		

CONEC